



Saturn VUE (not redline)  
 Pontiac Torrent  
 Chevy Equinox  
 Suzuki XL-7

6/14  
 TP20137, Rev.9

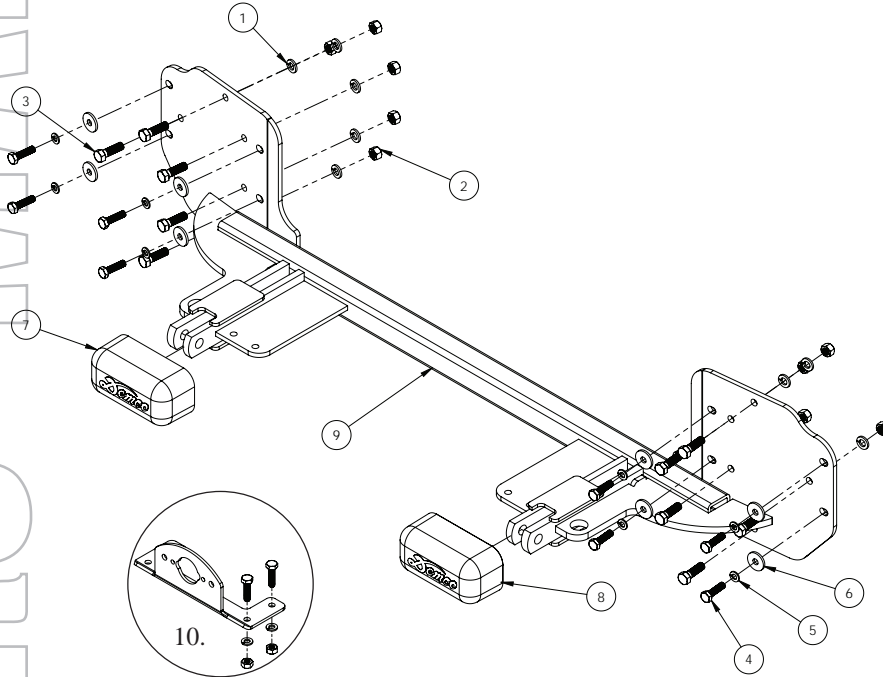


**BOLT TORQUE SPECIFICATIONS**

STANDARD BOLTS:			METRIC BOLTS:	
Size	Grade	Torque	Size	Torque
5/16"	5	20 ft/lbs.	8mm	22 ft/lbs.
3/8"	5	35 ft/lbs.	10mm	42 ft/lbs.
7/16"	5	56 ft/lbs.	12mm	70 ft/lbs.
1/2"	5	85 ft/lbs.	14mm	95 ft/lbs.

# BASEPLATE

Pin Height - 16-1/4" Pin Centers - 23-3/8"



Pages 3-7



Pages 3-6



Pages 8-11



Pages 8-11

**9518137 PARTS LIST**

ITEM	PART #	QTY	DESCRIPTION
1	00060	10	.375 Lockwasher
2	00061	10	.375 Hex Nut
3	00523	10	Bolt .375nc x 1.25 Hex Head GR5
4	04179	8	Bolt 8 mm - 1.25 x 30mm GR8.8
5	07286	8	Washer, Spring Lock, 8mm
6	09228	8	Washer, Fender 8mm
7	12979	1	Baseplate Pull Ear Cover "A"
8	12980	1	Baseplate Pull Ear Cover "B"
9	13032-35	1	Baseplate Crossmember
10	5937	1	Plug Mount Kit
11	12329	1	Loctite(not shown)

Please order replacement parts by PART NO. and DESCRIPTION.

ASSEMBLY  
 OPERATION  
 REPLACEMENT PARTS

**READ** complete manual CAREFULLY  
 BEFORE attempting operation.

Doing Our Best to Provide You the Best

OPERATORS MANUAL

## WARRANTY POLICY & REGISTRATION

Go online to [www.demco-products.com](http://www.demco-products.com) to review Demco warranty policies and register your Demco product.

**WARNING: FAILURE TO FOLLOW THESE INSTRUCTIONS CAN RESULT IN LOSS OF TOWING VEHICLE CONTROL, SEPARATION OF THE TOW BAR FROM THE TOWING VEHICLE, SEPARATION OF THE TOWED VEHICLE FROM THE TOW BAR, CAUSING SEVERE PERSONAL INJURY, DEATH, OR PROPERTY DAMAGE.**

### CAUTION

Safety is of utmost importance at all times. There are several items that must be checked each time before using and while using a tow bar.

Before allowing anyone to hook up or operate a tow bar, be sure they have read and understand the proper operating procedure.

**DO NOT** use worn or damaged cables and/or pins.

Be sure the **SAFETY CABLES** are hooked, chassis to chassis, to both the towing and towed vehicles using the crisscross method.

Check clearance between vehicles in a turning situation.

Check base plate mounting bolts for tightness and frame for metal fatigue.

Do not load the towed vehicle with anything as you may exceed the towing capacity of the tow bar.

Keep fingers away from pivot points to prevent personal injury.


Be sure the steering components of the towed vehicle are properly aligned.

**NOTE:** This unit can be backed up in moderate increments. Any severe backwards cornering could result in damage to the Tow Bar and/or towed vehicle chassis.

**For automatic transmissions:** Consult your vehicle owners manual for towing suitability with the drive shaft connected. Otherwise, the towed vehicle will have to be equipped with a transmission pump or drive shaft disconnect.

Check to make sure that all lights are in proper working order.

**The information on towability of vehicles is reprinted with permission of MotorHome® Magazine, and is believed to be reliable. However, Demco does not warrant the information to be correct. Always consult your towed vehicle owner's manual and follow towing instructions. Each year, MotorHome® Magazine, compiles a list of vehicles that can be towed four-down behind a motorhome with no modifications required. This guide contains only those vehicles that have been approved by their manufacturers for towing.**

 **Caution: MotorHome® Magazine** left out any vehicles that have towing speed limits slower than 55 m.p.h., or distance limits of less than 200 miles. At a minimum, these vehicles require significant modification, such as the use of an aftermarket product, to make them towable. The availability of a **Demco Tow Bar Base Plate** does not imply that these vehicles can be modified or that there is an aftermarket product available. Refer to your vehicle owner's manual or consult your dealer to determine whether your vehicle can be modified to make it towable. Failure to observe this precaution could result in property damage or personal injury.

### IMPORTANT INSTALLATION ITEMS

DEMCO products and accessories are intended to be installed by professional installers with experience, proper equipment and the ability to do modification work. Installers with these qualifications can be found in RV and Automotive Service Centers.

If the car to be towed has been in an accident, the chassis may be damaged in an area where the Base Plate attaches. It may no longer be suitable for towing. Extreme caution and careful examination are required in such a situation. It is also likely, even from a minor accident, that the hole alignment will be more difficult due to hole alignment problems.

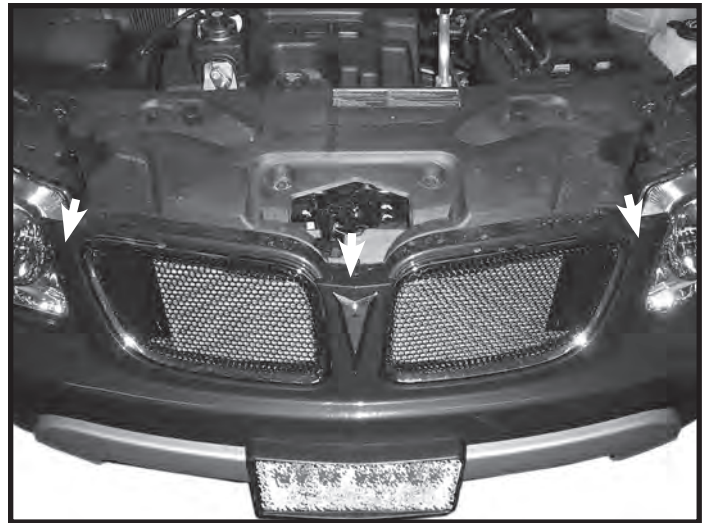
Many DEMCO Base Plates are designed to use existing holes and hardware to mount the Base Plate to the towed vehicle. Even though the bolt is there, however, do not assume it is adequate for mounting the Base Plate. Manufacturers make many changes in hardware both within and between model years. Be sure the bolt is long enough to protrude past the nut a distance no less than 1/2 the diameter of the bolt, after the Base Plate is mounted. The threads should be in good condition. **We require that "LOCTITE® Blue" be used on all bolts.** If a new bolt is required, be sure it is SAE Grade 5 or Metric 8.8.

**NOTE: The dimensional variations between otherwise identical vehicles can be considerable. Some minor modifications may have to be made to ensure a proper fit.**

# INSTALLATION INSTRUCTIONS

## Saturn Vue

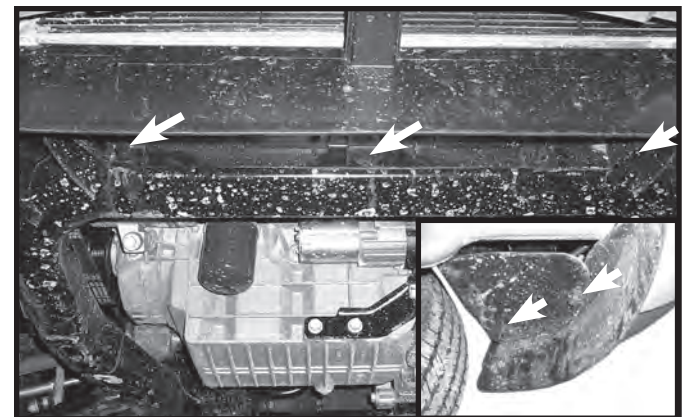
## Pontiac Torrent



1. Open hood and remove three plastic push fasteners from top of grill area.



2. Remove one screw from fascia to fender, on each side.



3. Remove three plastic push fasteners from center of fascia to car frame and two plastic push fasteners from wheel well extension to fascia on each side.

1. Open hood and remove two fasteners from center of fascia on top. 06 Vue, go to step 4.

2. Remove one push fastener from top of marker light on each side, and remove marker light by lifting straight up and out. Unplug and set aside.



3. Remove one bolt on each side (where marker light was removed) from top of fascia.

## Saturn Vue



4. Remove five plastic push fasteners from front of wheel well, four are located wheel well to fascia and one is wheel well to inside of body, on each side.

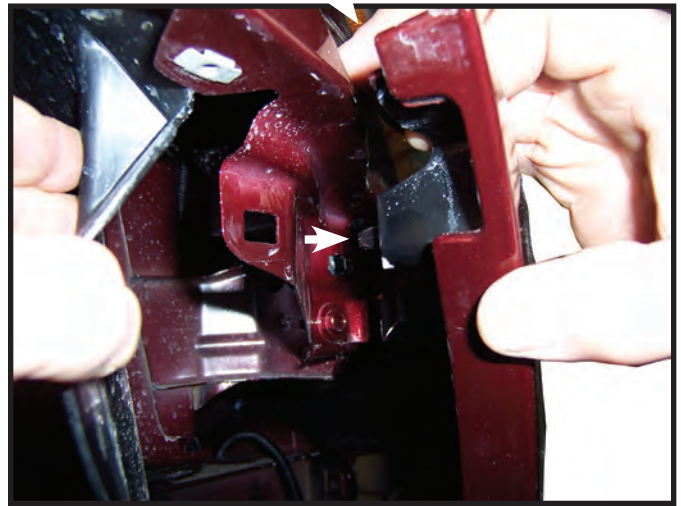


5. Remove one bolt on each side, bottom of fender to fascia (see picture).

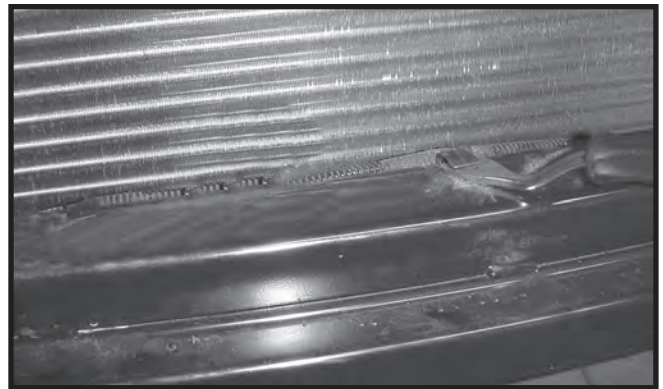


6. Remove three plastic push fasteners from bottom of fascia, behind air dam, and two plastic push fasteners from bottom of bumper to fascia tabs. These fasteners will not be reused.

## Pontiac Torrent



4. Release two clips from fascia to fender on each side. Pull outwards to release clips with needle nose pliers.



5. Remove wiring from bumper and temp sensor from bottom side of bumper if equipped. Temp sensor may need to be relocated.



6. Remove bumper, eight bolts, these will not be reused.

## Saturn Vue



7. Lift corner of fascia by headlights and carefully remove fascia (unplug lights).

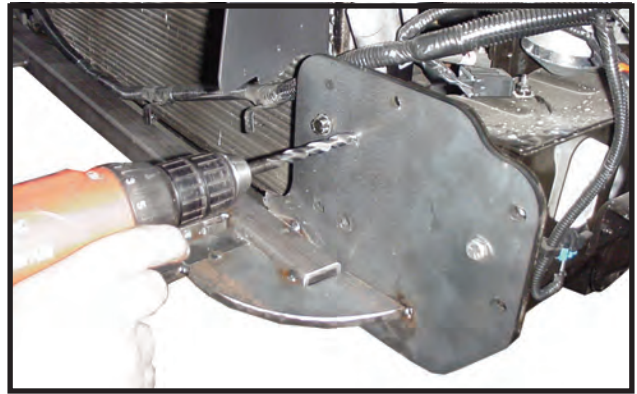


8. Remove two plastic push fasteners from styrofoam cover over bumper and remove styrofoam.

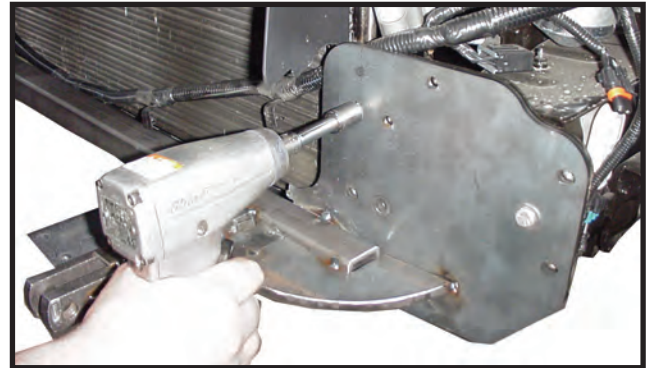


9. Remove wiring from bumper and temp sensor if equipped.

## Pontiac Torrent



7. Put base plate up and install two factory bumper bolts on each side as shown. Center base plate from side to side on slots and tighten these bolts. Then drill five 3/8" holes on each side, using base plate as template, through bumper mounting flange. **NOTE:** Don't drill through slotted holes in base plate, round holes only. Be careful when drilling for radiator and cooling lines.



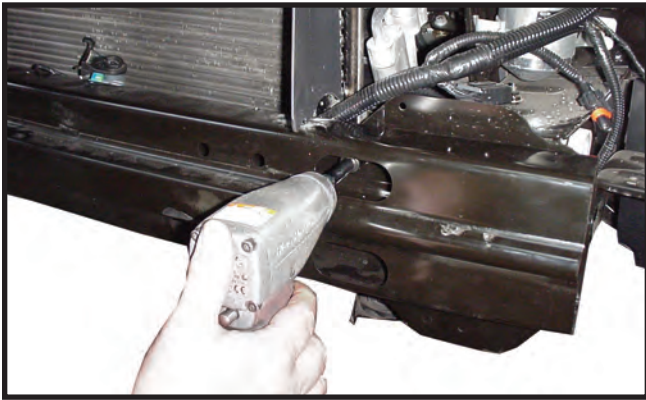
8. Install five 3/8" x 1-1/4" bolts, 3/8" lock washers and 3/8" hex nuts, on both sides and tighten. Remove factory bumper bolts previously installed and put bumper back on with eight supplied 8mm bolts, flat washers and lock washers.

**NOTE: We require that "LOCTITE® Blue" be used on all bolts.**

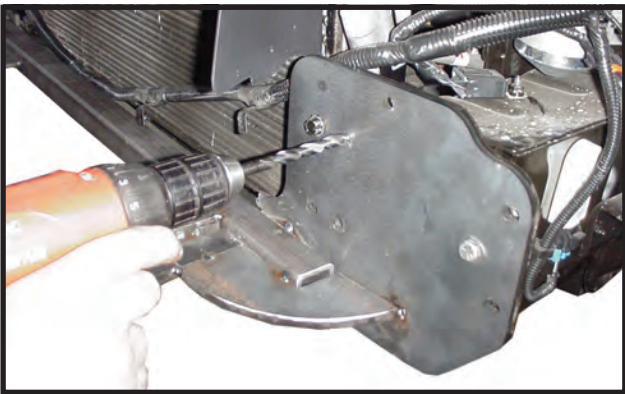


9. Cut bottom grill bar as marked in picture for baseplate pull ears to pass through.

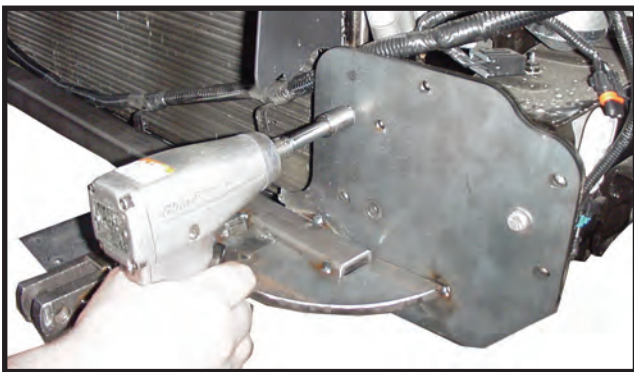
## Saturn Vue



10. Remove bumper, eight bolts, these will not be reused.



11. Put base plate up and install two factory bumper bolts on each side as shown. Center base plate from side to side on slots and tighten these bolts. Then drill five 3/8" holes on each side, using base plate as template, through bumper mounting flange. **NOTE:** Don't drill through slotted holes in base plate, round holes only. Be careful when drilling for radiator and cooling lines.



12. Install five 3/8" x 1-1/4" bolts, 3/8" lock washers and 3/8" hex nuts, on both sides and tighten. Remove factory bumper bolts previously installed and put bumper back on with eight supplied 8mm bolts, flat washers and lock washers. **NOTE: We require that "LOCTITE® Blue" be used on all bolts.**

## Pontiac Torrent



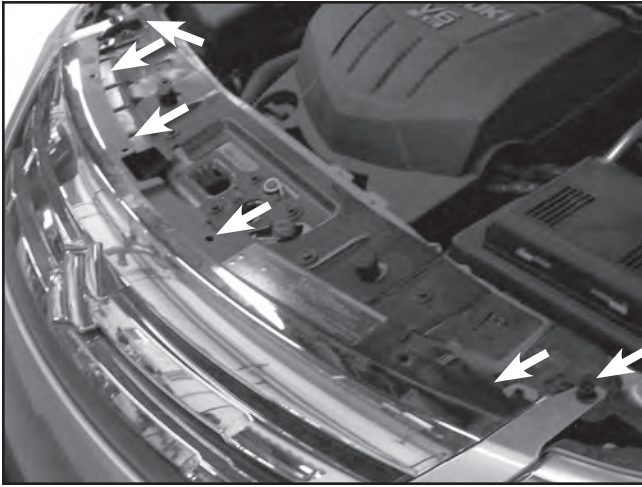
10. Reinstall, wiring, temp sensor, fascia, and all hardware.
11. Plug mount (item #10) may be installed if desired in convenience holes on either chain anchor or as desired. **NOTE:** Excess material may be trimmed from bracket.

## Saturn Vue



13. Reinstall styrofoam cover on bumper, wiring and temp sensor, facia, and all hardware.
14. Plug mount (item #10) may be installed if desired in convenience holes on either chain anchor or as desired.  
**NOTE:** Excess material may be trimmed from bracket.

## Suzuki XL-7



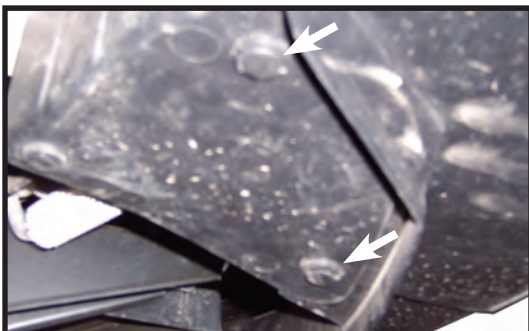
1. Open hood and remove six plastic push fasteners from top of grill area.



2. Remove one screw from fascia to fender, on each side.

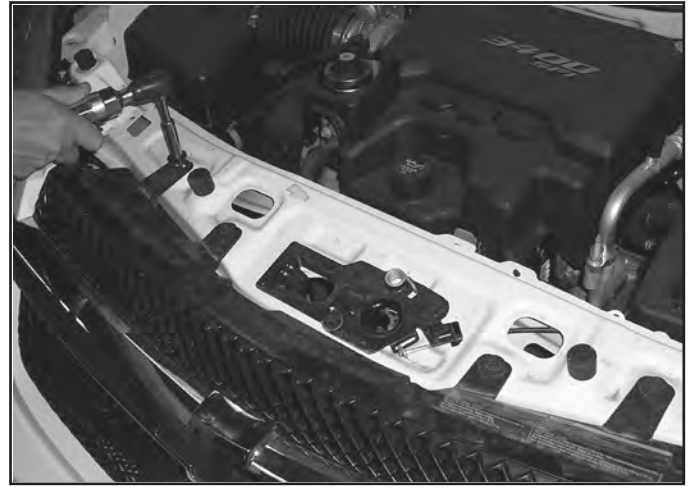


3. Remove two plastic push fasteners from front of wheel well.



4. Remove two plastic push fasteners from bottom of fascia.

## Chevy Equinox



1. Open hood and remove four bolts fasteners from top of grill area.



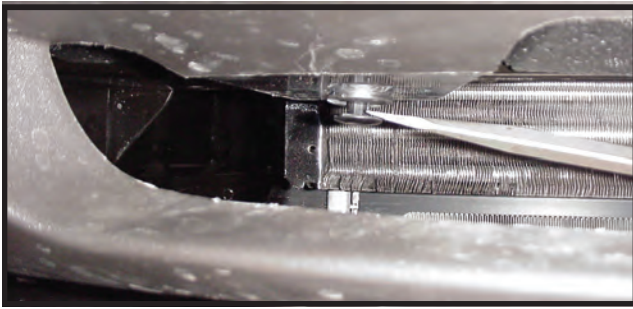
2. Remove one screw from fascia to fender, on each side.



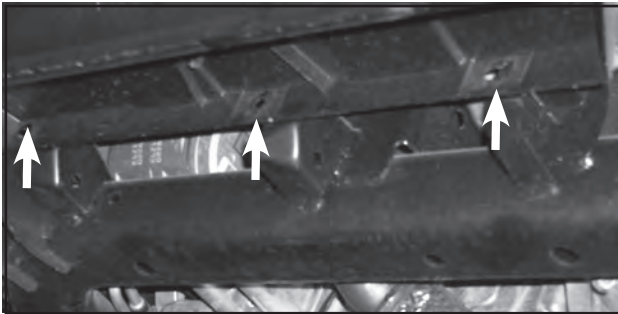
3. Insert a flat screw driver and carefully pop out the corner of the fascia over the headlight on each side.



## Suzuki XL-7



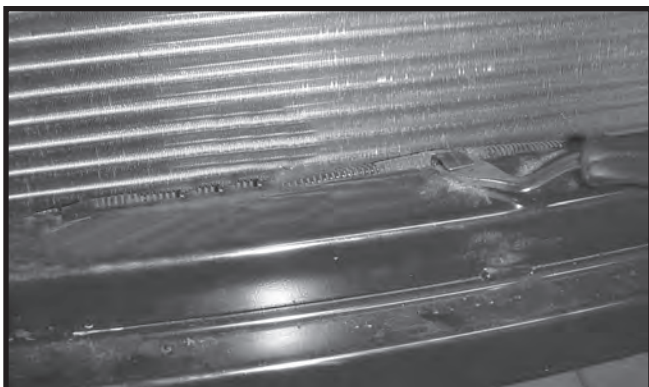
5. Remove three plastic push fasteners from bottom of fascia, behind air dam, and two plastic push fasteners from bottom of bumper to fascia tabs. These fasteners will not be reused.



6. Remove three plastic push fasteners from under fascia.

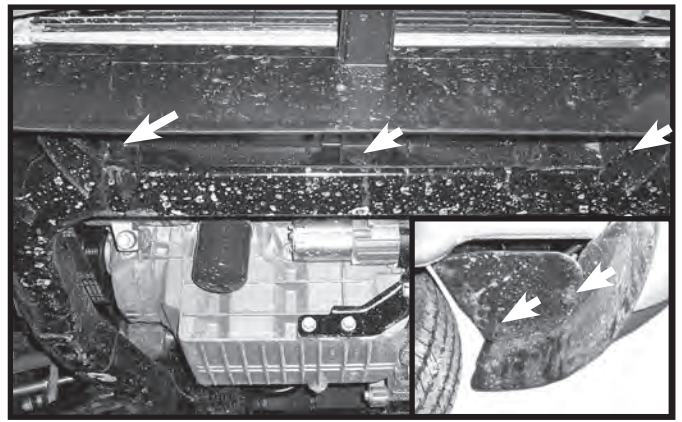


7. Reach inside of fender well and carefully push out an up on the corner of the fascia under the headlight on each side.

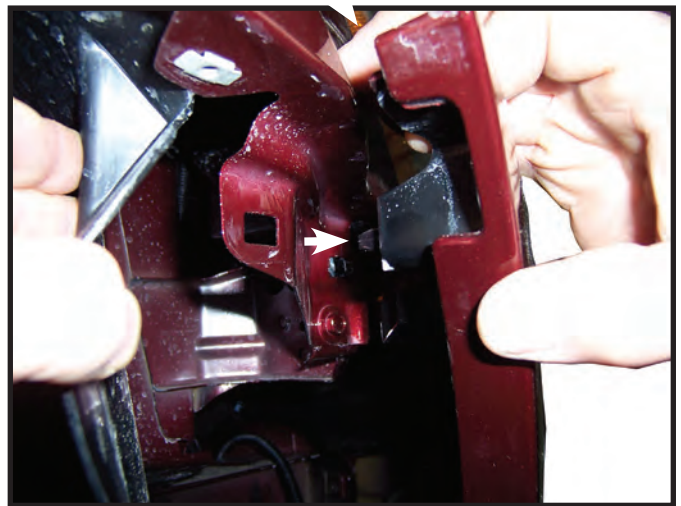


8. Remove wiring from bumper and temp sensor from bottom side of bumper if equipped. Temp sensor may need to be relocated.

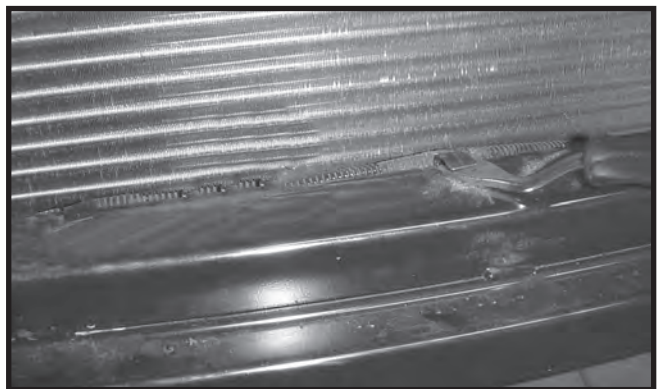
## Chevy Equinox



4. Remove three plastic push fasteners from center of fascia to car frame and two plastic push fasteners from wheel well extension to fascia on each side.



5. Release two clips from fascia to fender on each side. Pull outwards to release clips with needle nose pliers.

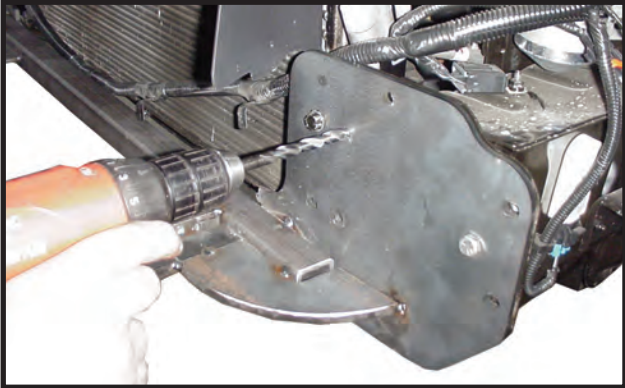


6. Remove wiring from bumper and temp sensor from bottom side of bumper if equipped. Temp sensor may need to be relocated.

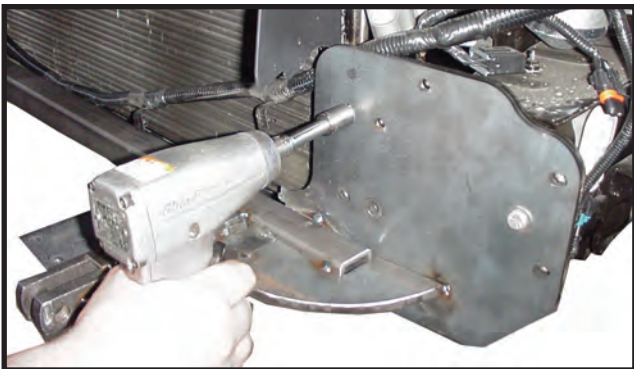
## Suzuki XL-7



9. Remove bumper, eight bolts, these will not be reused.

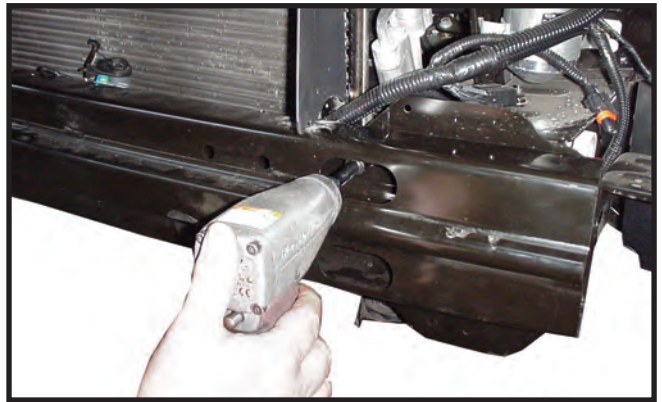


10. Put base plate up and install two factory bumper bolts on each side as shown. Center base plate from side to side on slots and tighten these bolts. Then drill five 3/8" holes on each side, using base plate as template, through bumper mounting flange. **NOTE:** Don't drill through slotted holes in base plate, round holes only. Be careful when drilling for radiator and cooling lines.

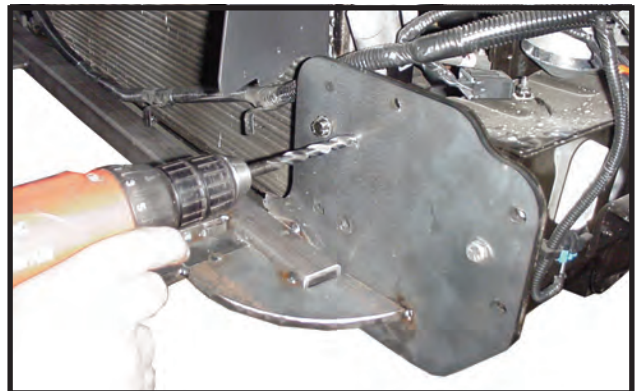


11. Install five 3/8" x 1-1/4" bolts, 3/8" lock washers and 3/8" hex nuts, on both sides and tighten. Remove factory bumper bolts previously installed and put bumper back on with eight supplied 8mm bolts, flat washers and lock washers. **NOTE: We require that "LOCTITE Blue" be used on all bolts.**

## Chevy Equinox



7. Remove bumper, eight bolts, these will not be reused.



8. Put base plate up and install two factory bumper bolts on each side as shown. Center base plate from side to side on slots and tighten these bolts. Then drill five 3/8" holes on each side, using base plate as template, through bumper mounting flange. **NOTE:** Don't drill through slotted holes in base plate, round holes only. Be careful when drilling for radiator and cooling lines.



9. Install five 3/8" x 1-1/4" bolts, 3/8" lock washers and 3/8" hex nuts, on both sides and tighten. Remove factory bumper bolts previously installed and put bumper back on with eight supplied 8mm bolts, flat washers and lock washers. **NOTE: We require that "LOCTITE Blue" be used on all bolts.**

## Suzuki XL-7



12. Cut bottom grill bar as marked in picture for baseplate pull ears to pass through.



13. Reinstall, wiring, temp sensor, facia, and all hardware. (Except two plastic push fasteners in bumper above pull ears.)
  14. Plug mount (item #10) may be installed if desired in convenience holes on either chain anchor or as desired.
- NOTE:** Excess material may be trimmed from bracket.

## Chevy Equinox



Sport Model



L Models

10. Cut bottom grill as marked in picture for baseplate pull ears to pass through on sport model. Some minor trimming may be required trim outside vertical grill bars on LT model leave center bar.



11. Reinstall, wiring, temp sensor, facia, and all hardware.
  12. Plug mount (item #10) may be installed if desired in convenience holes on either chain anchor or as desired.
- NOTE:** Excess material may be trimmed from bracket.



P.O. BOX 189  
4010 320th St., BOYDEN, IA. 51234  
PH: (712) 725-2311  
FAX: (712) 725-2380  
TOLL FREE: 1-800-54DEMCO (1-800-543-3626)  
[www.demco-products.com](http://www.demco-products.com)

**Go online to [www.demco-products.com](http://www.demco-products.com) for Demco  
warranty policies & product registration.**