

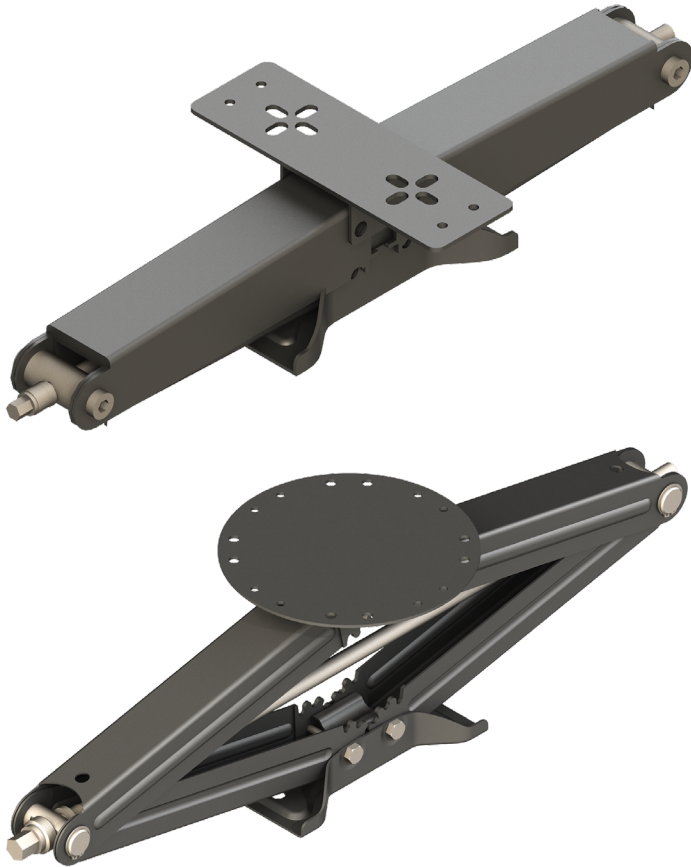


**LIPPERT**  
COMPONENTS®

# Scissor Jack

## Installation and Owner's Manual

(For Aftermarket Applications)



Scissor Jack Aftermarket Kits	
Part #	Description
<a href="#">285325</a>	24"-lift scissor jack; one per package with mounting hardware
<a href="#">285326</a>	24"-lift scissor jacks; two jacks, mounting hardware and crank handle
<a href="#">285332</a>	30"-lift scissor jack; one per package with mounting hardware
<a href="#">285344</a>	30"-lift scissor jacks; two jacks, mounting hardware and crank handle

## Table of Contents

Introduction .....	2
Safety .....	2
Parts List .....	2
Resources Required .....	3
Preparation .....	3
Installation .....	3
Operation .....	4



**LIPPERT**  
COMPONENTS®

# Scissor Jack

## Installation and Owner's Manual

(For Aftermarket Applications)

## Introduction

Lippert Components scissor jacks provide a cost-efficient way to add stabilization to an RV to reduce rocking and swaying.

Scissor jack features include rust-inhibitive finish on all metal surfaces and universal bolt-on application. Available in one- or two-jack kits. Crank handle included in two-jack kits only. Each scissor jack comes with four mounting bolts.

Additional information about this product can be obtained from [lci1.com/support](http://lci1.com/support) or by using the myLCI app. Replacement components can be ordered from <https://store.lci1.com/> or by using the myLCI app.

The myLCI app is available for free on iTunes® for iPhone® and iPad® and also on Google Play™ for Android™ users. iTunes®, iPhone® and iPad® are registered trademarks of Apple Inc. Google Play™ and Android™ are trademarks of Google Inc.

## Safety

### ⚠ WARNING

THE "WARNING" SYMBOL ABOVE IS A SIGN THAT AN INSTALLATION PROCEDURE HAS A SAFETY RISK INVOLVED AND MAY CAUSE DEATH, SERIOUS PERSONAL INJURY OR SEVERE PRODUCT OR PROPERTY DAMAGE IF NOT PERFORMED SAFELY AND WITHIN THE PARAMETERS SET FORTH IN THIS MANUAL.

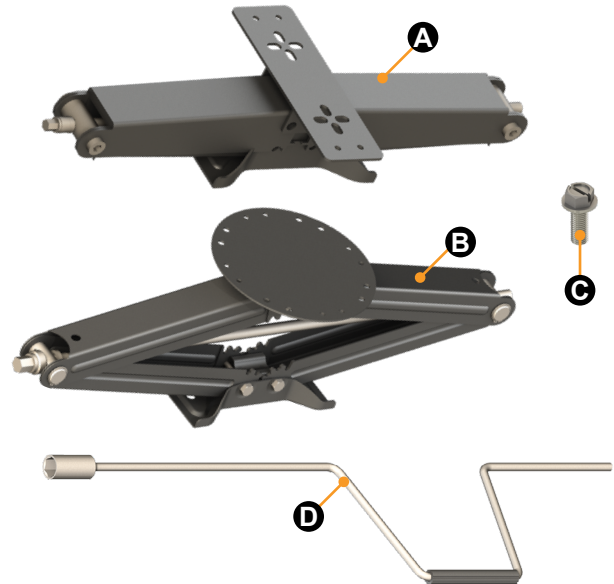
### ⚠ WARNING

THE SCISSOR JACK IS DESIGNED AS A STABILIZING COMPONENT ONLY. DO NOT USE ANY SCISSOR JACK TO LEVEL A TRAILER. USE OF A SCISSOR JACK TO LIFT A TRAILER FOR SERVICE CAN CREATE A DANGEROUS SITUATION THAT CAN RESULT IN DEATH, SERIOUS PERSONAL INJURY OR SEVERE PRODUCT OR PROPERTY DAMAGE.

### ⚠ CAUTION

MOVING PARTS CAN PINCH, CRUSH OR CUT. KEEP CLEAR AND USE CAUTION.

## Parts List



### Scissor Jack Aftermarket Kit Part # 285325

Letter	Part #	Description	Qty
A	115780	24"-lift scissor jack	1
C	191021	3/8" - 16 x 1" self-tapping bolt	4

### Scissor Jack Aftermarket Kit Part # 285326

Letter	Part #	Description	Qty.
A	115780	24"-lift scissor jack	2
C	191021	3/8" - 16 x 1" self-tapping bolt	8
D	<a href="#">285324</a>	Scissor jack crank handle	1

### Scissor Jack Aftermarket Kit Part # 285332

Letter	Part #	Description	Qty
B	182149	30"-lift scissor jack	1
C	191021	3/8" - 16 x 1" self-tapping bolt	4

### Scissor Jack Aftermarket Kit Part # 285344

Letter	Part #	Description	Qty
B	182149	30"-lift scissor jack	2
C	191021	3/8" - 16 x 1" self-tapping bolt	8
D	<a href="#">285324</a>	Scissor jack crank handle	1



# Scissor Jack

## Installation and Owner's Manual

(For Aftermarket Applications)

### Resources Required

- Jack stands
- Floor stands
- Cordless or electric drill or screw gun
- Appropriate drive bits
- Non-permanent marker
- 5/16" drill bit
- Hand crank or hex socket wrench

### ⚠ WARNING

THE TRAILER MUST BE SUPPORTED PER THE MANUFACTURER'S RECOMMENDATIONS BEFORE WORKING UNDERNEATH. FAILURE TO DO SO MAY RESULT IN DEATH, SERIOUS PERSONAL INJURY OR SEVERE PRODUCT OR PROPERTY DAMAGE.

### Preparation

1. Using the properly-rated floor jack, lift the trailer according to the manufacturer's recommendation.
2. Support framework in accordance with the manufacturer's recommendation.
3. Determine jack mounting locations. The jacks must remain within the departure angle of the trailer (**Fig.1**)

**NOTE:** To measure departure angle, run a string line from the meeting point of the tire and ground up to the lowest point on the rear of the trailer — shown in Fig. 1 as dotted lines.

4. Peel back the underbelly material to make sure there are no electrical, gas, hydraulic or sewage lines that will be damaged by the scissor jack installation. Move the mounting location or relocate the underbelly components if there are conflicts with the installation.

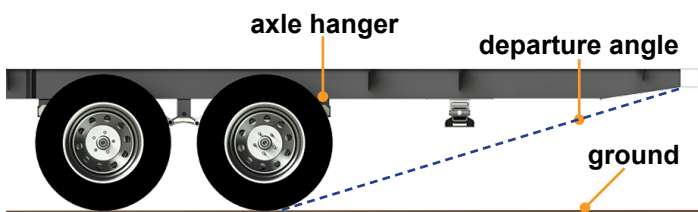


Fig.1

### Installation

1. Hold scissor jack against I-beam in the jack mounting location.
2. Using a marker, mark pilot hole locations through the scissor jack mounting holes onto the I-beam.
3. Drill 5/16" pilot holes at marked locations on I-beam.
4. Place scissor jack under I-beam. Use hand crank or socket wrench to extend the scissor jack until it touches the bottom of the I-beam.
5. Align mounting holes of scissor jack to the pilot holes on the I-beam.
6. Fasten the scissor jack to the I-beam with the self-tapping bolts.

### ⚠ CAUTION

DO NOT OVERTIGHTEN THE SELF-TAPPING BOLTS. OVERTIGHTENING MAY DAMAGE THE SCISSOR JACK.



**LIPPERT**  
COMPONENTS®

# Scissor Jack

## Installation and Owner's Manual

(For Aftermarket Applications)

### Operation

1. With the scissor jack in the retracted position (**Fig.2**), apply the hex head coupler on the hand crank to the hex head of scissor jack (**Fig.3**).
2. Rotate crank handle clockwise to extend scissor jack (**Fig.3**).

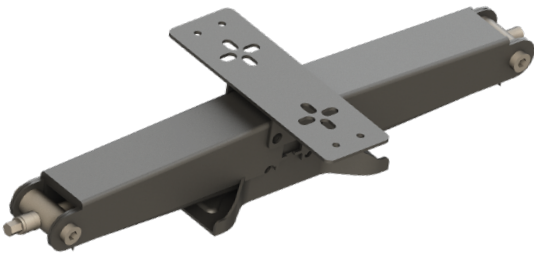


Fig.2



Fig.3



Fig.4

5. Apply crank handle to scissor jack's hex head and turn counterclockwise to retract the scissor jack.

### ⚠ CAUTION

DO NOT USE A POWER DRILL, CHEATER BAR OR IMPACT WRENCH TO OPERATE THE SCISSOR JACK. USE OF POWER TOOLS CAN DAMAGE THE SCISSOR JACK AND WILL VOID THE WARRANTY.

### ⚠ CAUTION

DO NOT USE THIS SCISSOR JACK TO LIFT EXCESSIVE WEIGHT OR LIFT TIRES OFF OF THE GROUND. TRAILER FRAME AND DOORJAMB DAMAGE MAY RESULT.

3. Continue to rotate crank handle until the scissor jack reaches desired height.
4. Remove crank handle when scissor jack reaches desired height (**Fig. 4**).



**LIPPERT**  
COMPONENTS®

Manual information may be distributed as a complete document only, unless Lippert Components provides explicit consent to distribute individual parts.

All manual information is subject to change without notice. Revised editions will be available for free download at [lci1.com](http://lci1.com). Manual information is considered factual until made obsolete by a revised version.

Please recycle all obsolete materials and contact Lippert Components with concerns or questions.