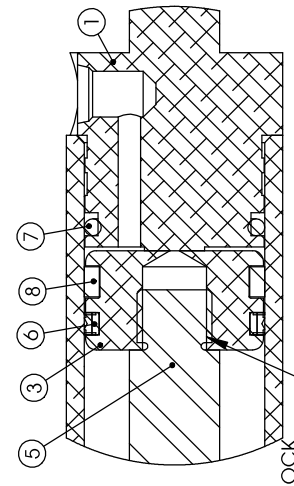
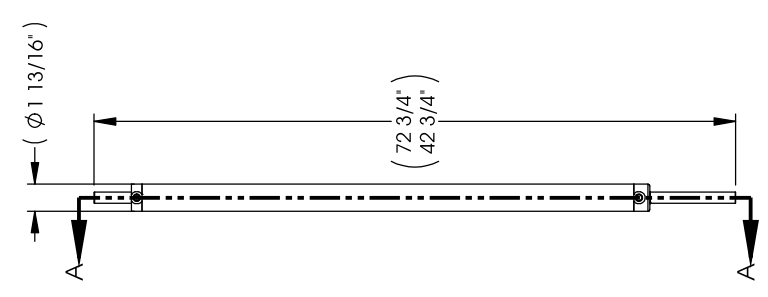
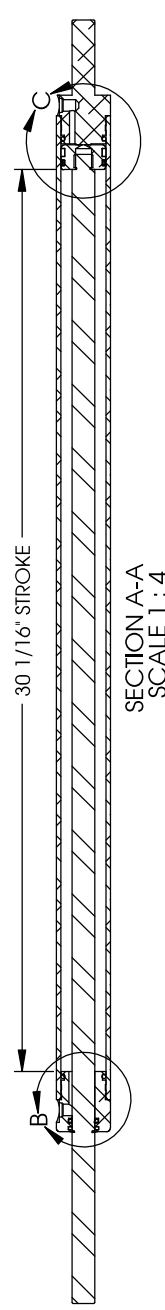
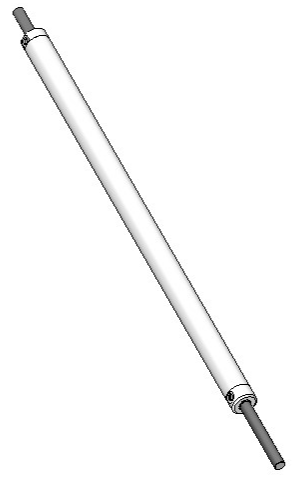


REVISION HISTORY			
REV	DATE	DESCRIPTION	DWR
A	7/3/2014	RELEASED TO PRODUCTION	DAL
B	4/30/2015	UPDATE DESCRIPTION	KSW

- NOTES:
- 3/4" - 10 NUTS REQUIRED
 - SAE # 4 PORT FITTINGS REQUIRED
 - MAX CAPACITY: 4500 LBS
 - CAP/GLAND CRIMP RATING: 7500 PSI



- FULLY COAT THREADS:
1. APPLY 7649 PRIMER
 2. APPLY 263 THREAD LOCK
 3. SCREW ON PISTON TIGHT WITHIN 1 MINUTE OF THREAD LOCK
 4. ALLOW THREAD LOCK TO CURE 12 HOURS PRIOR TO APPLYING HYDRAULIC FLUID



ITEM	PART NO.	CONF	DESCRIPTION	NAME	GA	QTY
1	339026	Detault	ACTUATOR CAP - 1 1/2" BORE	HYD CYLINDER		1
2	339027	Detault	ACTUATOR GLAND - 1 1/2" BORE	HYD CYLINDER		1
3	339030	Detault	ACTUATOR PISTON - 1 1/2" BORE	HYD CYLINDER		1
4	334305	Detault	ACTUATOR BOLT - 7/8" DIA - 1 1/2" STROKE BLACK	HYD CYLINDER		1
5	334306	Detault	ACTUATOR ROD - 7/8" O.D. - 1 1/2" BORE - 30" STROKE BLACK	HYD CYLINDER		1
6	335610	Detault	PISTON SEAL - 1.500 BORE	HYD FITTING		1
7	335611	Detault	O-RING - 1.500 O.D. - 1.25	HYD FITTING		2
8	339032	Detault	WEAR RING - 1.500 BORE X 1.250 I.D. - PISTON	HYD FITTING		1
9	339169	Detault	WIPER RING - 7.50 ROD AN TYPE - 959405	HYD FITTING		1
10	339170	Detault	X-RING - 1.000" OD - 7.50" ID - XRB-210BN90	HYD FITTING		1

ALUMINUM HYDRAULIC ACTUATOR, 1 1/2" BORE - 30" STROKE WITH 38.25 ROD

LIFPERT COMPONENTS		LIFPERT COMPONENTS	
TOLERANCES (EXCEPT AS NOTED)		THE RESERVATION OF RIGHTS IN THE DRAWINGS IS THE SOLE PROPERTY OF LIFPERT COMPONENTS, INC. ANY REPRODUCTION IN PART OR AS A WHOLE WITHOUT THE WRITTEN PERMISSION OF LIFPERT COMPONENTS, INC. IS PROHIBITED.	
DECIMAL	.XX .XXX	DWG. NO.	354179
ANGLED/EQUAL/VAL	.XXX ±.005	DATE	07/03/2014
FINISH 1/2"		REV.	B
THROW/ANGLE PROTECTION	FRACTIONAL ±1/16	SCALE	1:8
	ANGULAR ±1°	ENG	DAL
		DWR	DAL
		SHEET	1
		OF	1

