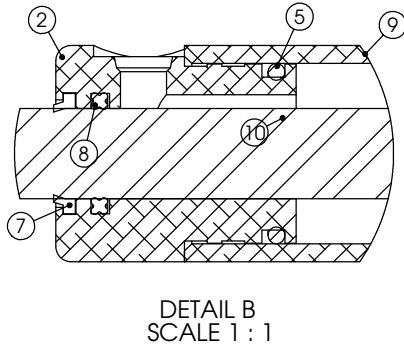
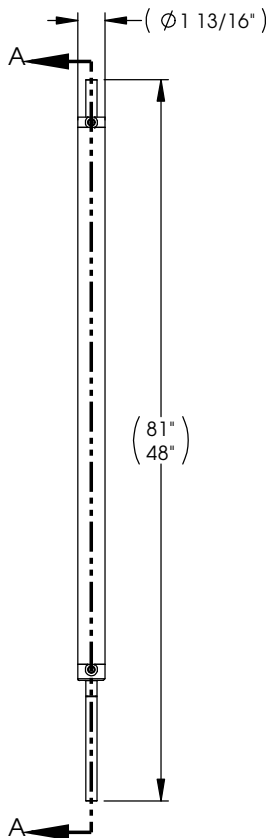
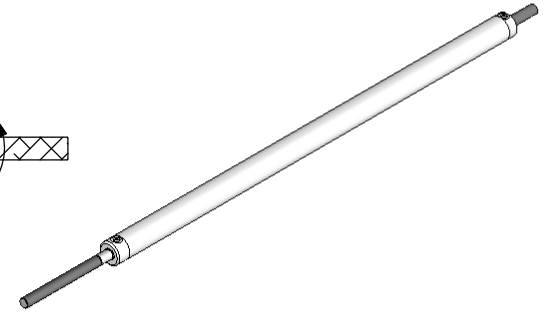
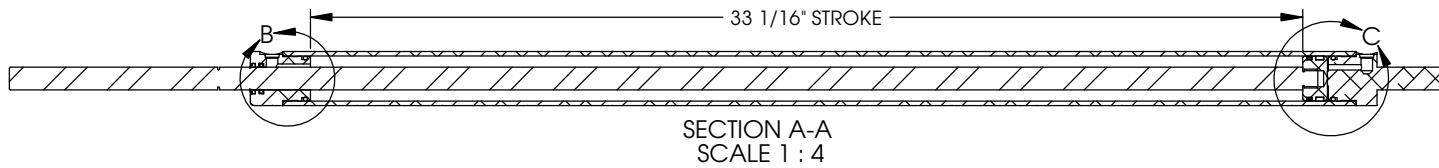


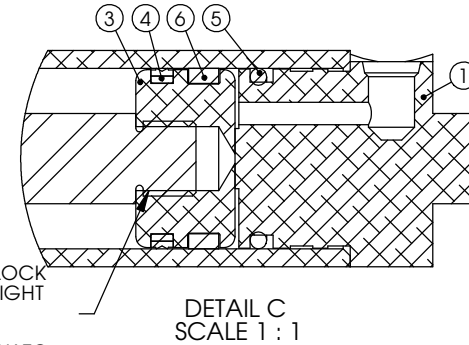
NOTES:

1. 3/4 - 10 NUTS REQUIRED
2. SAE #4 PORT FITTINGS REQUIRED
3. MAX CAPACITY: 4500 LBS
4. CAP/GLAND CRIMP RATING: 7500 PSI

REVISION HISTORY					
REV	DATE	DESCRIPTION	ECN	DWR	APVD
A	7/2/2014	RELEASED TO PRODUCTION	ECN-SP-NP-16753	MTH	MD
B	4/30/2015	UPDATE DESCRIPTION	ECN-SP-DE-14672	KSW	KB



- FULLY COAT THREADS:
1. APPLY 7649 PRIMER
 2. APPLY 263 THREAD LOCK
 3. SCREW ON PISTON TIGHT WITHIN 1 MINUTE OF THREAD LOCK
 4. ALLOW THREAD LOCK TO CURE 12 HOURS PRIOR TO APPLYING HYDRAULIC FLUID



ITEM	PART NO.	CONFIG	DESCRIPTION	NAME	GA	QTY.
1	339026	Default	ACTUATOR, CAP - 1 1/2" BORE	HYD CYLINDER		1
2	339027	Default	ACTUATOR, GLAND - 1 1/2" BORE	HYD CYLINDER		1
3	339030	Default	ACTUATOR, PISTON - 1 1/2" BORE	HYD CYLINDER		1
4	335510	Default	PISTON SEAL - 1.500 BORE	HYD FITTING		1
5	335511	Default	O-RING: 1.500 O.D. - 125	HYD FITTING		2
6	339032	Default	WEAR RING - 1.500 BORE X 1.250 I.D., PISTON	HYD FITTING		1
7	339169	Default	WIPER RING - 750 ROD, AN TYPE - 959-05	HYD FITTING		1
8	339170	Default	X-RING: 1.000" OD - 750" ID; XR-210BN90	HYD FITTING		1
9	354276	Default	ACTUATOR BODY - 1 1/2" BORE, 33" STROKE, BLACK	HYD CYLINDER		1
10	354277	Default	ACTUATOR ROD - 750 O.D., 1 1/2" BORE - 33" STROKE	HYD CYLINDER		1

TITLE: **ALUMINUM HYDRAULIC ACTUATOR, 1 1/2" BORE - 33" STROKE**

UNLESS OTHERWISE SPECIFIED
 1. ALL DIMENSIONS ARE IN INCHES BREAK SHARP EDGES & DEBURR
 2. MATERIAL & FINISH TO BE AS NOTED OR SUBSTITUTED WITH AN APPROVED AND TESTED EQUIVALENT

TOLERANCES (EXCEPT AS NOTED)
 DECIMAL .X ± 1
 .XX ± 03
 .XXX ± 005

FILLETS R.015 FINISH 125

THIRD ANGLE PROJECTION

FRACATIONAL ±1/16
 ANGULAR ±1°

LIPPERT COMPONENTS
 2703 COLLEGE AVE
 GOSHEN, IN 46528

THE INFORMATION CONTAINED IN THIS DRAWING IS THE SOLE PROPERTY OF LIPPERT COMPONENTS, INC. ANY REPRODUCTION IN PART OR AS A WHOLE WITHOUT THE WRITTEN PERMISSION OF LIPPERT COMPONENTS, INC. IS PROHIBITED.

DWG. NO. **354182** SIZE **B** DATE: **07/02/2014** REV. **B**
 SCALE: **1:8**

ENG **MTH** DWR **MTH** SHEET **1** OF **1**