



ALBM

Locking Adjustable Aluminum Ball Mount *Use and Care Instructions*

For ALBM Models:

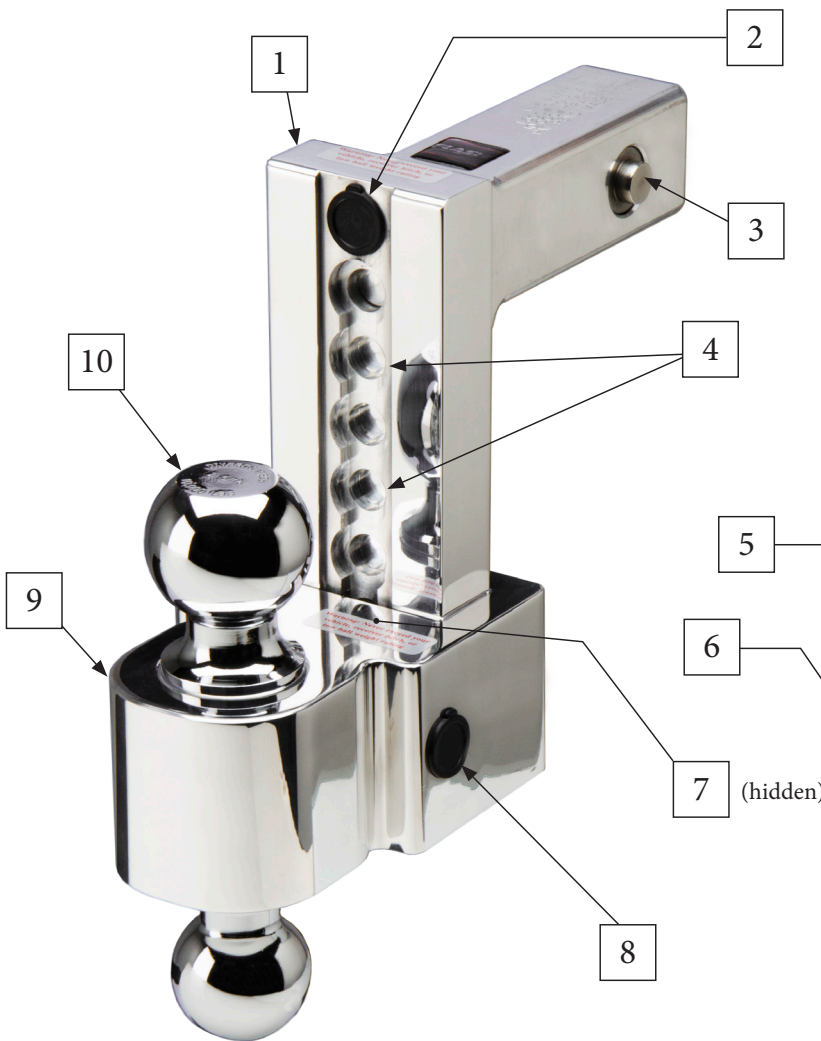
2 Inch Receiver: DT-ALBM6400, DT-ALBM6600, DT-ALBM6800, DT-ALBM7000

2.5 Inch Receiver: DT-ALBM6425, DT-ALBM6625, DT-ALBM6825, DT-ALBM7025

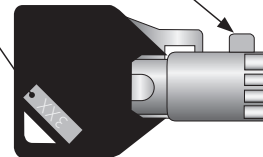
Congratulations on your purchase of a new Fastway® Flash™ ALBM ball mount. Read these instructions thoroughly to become familiar with proper set up and maintenance procedures. This will ensure that your Flash ball mount will give you maximum performance, and years of service.

KEEP THESE INSTRUCTIONS in a safe place as a reference for future information.

BALL SIZE	MAX TRAILER WT. LBS.	MAX TONGUE WT. LBS.
2"	8,000	1,000
2 ⁵ / ₁₆ "	10,000	



1. Drop bar
2. Drop bar lock cylinder and cover
3. Drop bar lock pin(s)
4. Height adjustment holes
5. Key safety locator tab
6. Key code
7. Ball holder lock pin
8. Ball holder lock cylinder and cover
9. Ball holder
10. Dual hitch ball



Please register your product. See warranty information on back. If you lose your keys, contact us about a replacement at 877-523-9103.

Proudly Made in the USA

Date of Purchase:	<input type="text"/>
Key Code:	<input type="text"/>
IMPORTANT: Lost keys CANNOT be replaced without key code. Write it down and keep it in a safe place!	

IMPORTANT SAFETY INFORMATION

Failure to follow all safety warnings may result in severe injury or death.

⚠️ WARNING

- Read, understand, and follow all safety warnings, setup, use, and maintenance instructions of your trailer, tow vehicle, and hitching equipment before installing your Flash ball mount or towing your trailer.
- Never cut, weld, grind, bend, heat, or modify ball mount components in any way.
- It is the driver's responsibility to properly install and adjust equipment and adjust driving habits to match towing conditions. The driver is responsible for their own safety and the safety of passengers.
- Never exceed the specified weight ratings for the trailer, tow vehicle, receiver hitch, ball mount, hitch ball, or any other towing equipment.
- Always use a hitch ball size that correctly matches your trailer coupler size and make sure it is coupled securely before towing.
- Do not impact the ball mount on the ground. Do not back into things with your ball mount or attached trailer (i.e. loading docks, trees, etc.). If your ball mount has been impacted in any way, thoroughly inspect it for damage before towing, and if it is bent or damaged DO NOT tow; replace it.

- Do not unlock the drop bar or ball holder while the ball mount is under load from an attached trailer.
- Check all towing hardware before each trip. Do not tow your trailer until all lock pins and height adjustment holes have been checked for wear, visually verifying ball holder lock pin is completely engaged in a height adjustment hole, and the drop bar lock pins are completely engaged in the tow vehicle's receiver (hitch pin) holes.
- Check your keys before use to make sure they are in good working order and that the safety locator tab at the front of the key barrel is intact.

⚠️ CAUTION

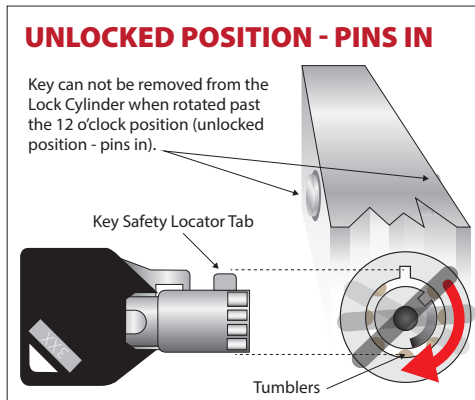
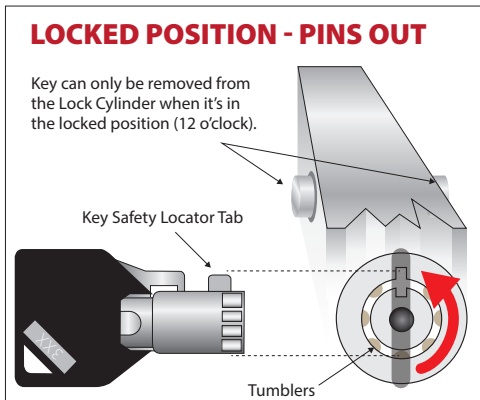
- Always tow with your hitch ball adjusted to the correct height for the trailer being towed.
- Always load the trailer correctly. Follow trailer and tow vehicle manufacturer's recommendations for placement and quantity of cargo.
- Do not tow your trailer on excessively rough roads.
- Do not tow your trailer through profound ditches, dips, or swales.
- Replace all worn, faded, or unreadable warning stickers on the ball mount immediately.
- Insert the key firmly and completely into the lock cylinder before rotating the lock.

GOOD THINGS TO KNOW BEFORE YOU START

- **Write your key code down and keep it! If you know the code, lost keys are easily and cheaply replaced. If you don't, you must have the entire lock mechanism replaced to be able to use the ball mount again.**
- The key cannot be removed with the lock pins in the retracted position – this is a safety feature of the product. It keeps the user from removing the keys before the lock pins are fully extended. Because you can't remove the key (unless you break the key safety tab); we recommend attaching the ball mount key to your vehicle key chain. If the key is on your vehicle key chain you cannot drive the vehicle with a partially locked ball mount in place because the key will still be in the ball mount lock cylinder.
- If the key won't come out of the cylinder, don't try to force it. A key not coming free from the lock cylinder is most likely an indication that there is something keeping the locking pin(s) from fully extending or retracting. Forcing the key out when

it is in the wrong position could damage the key by breaking off the safety locator tab and leave the ball mount lock pins not fully engaged into the receiver or height adjustment holes.

- Don't pull outward on the key as you turn it or try to force the key to the 6:00/12:00 position. If the key does not easily turn to the straight up position, figure out what is restricting the locking pins from extending or retracting. Refer to the troubleshooting guide section of these instructions.
- Don't hammer on or try to force the lock pins to retract without the key in the lock and in the process of being turned clockwise. The lock pins will not retract without the key in place and turned clockwise past the 2:00 position. This is a safety and security feature of the product.
- Grease the hitch ball before towing with a good quality multi-purpose or bearing grease. This protects the hitch ball and the inside of your trailer coupler. The chrome coating on the ball is not covered under the ball mount warranty.



Visit our YouTube channel for a detailed video of the Flash ALBM.



[YouTube.com/FastwayTrailer](https://www.youtube.com/FastwayTrailer)



[Facebook.com/FastwayTrailer](https://www.facebook.com/FastwayTrailer)



[Twitter.com/FastwayTrailer](https://www.twitter.com/FastwayTrailer)

INSTRUCTIONS FOR USE

1. INSTALLING BALL MOUNT DROP BAR INTO RECEIVER

- Use the key to retract and extend the lock pins several times. Retract the lock pins. Insert the drop bar into the receiver. Make sure the lock pins align with the hitch pin holes in the receiver tube. Extend the lock pins into the hitch pin holes. Replace the lock cover tightly. If key movement is stiff or restricted, make sure the lock pins are correctly located/centered on the receiver's hitch pin holes, and that there is not a burr or other obstruction in the hole(s) that is impeding the lock pins from fully extending or retracting.

First-time Installations

Extend and retract the lock pins into the receiver's hitch pin holes several times to make sure the receiver tube does not have an issue or obstruction that may cause a future problem. If the locking pins do get stuck in the receiver hole when installing your ball mount the first time, refer to the troubleshooting section for instructions on how to free it without damage. **DO NOT FORCE THE KEY!**

2. INSTALLING AND ADJUSTING BALL HOLDER ON DROP BAR

- Insert the key into the ball holder lock and retract the lock pin ($\frac{1}{2}$ turn). Slide the ball holder onto the drop bar with the hitch ball that you intend to use in the up position. With the hitch ball at the proper height for your towing application, turn the key counterclockwise $\frac{1}{4}$ turn to partially extend the lock pin. At that point, slowly move the ball holder up or down a little until the spring-loaded lock pin snaps into the correct height adjustment hole on the drop bar. Once the pin is in the hole and the ball holder cannot move up or down, return the key the final $\frac{1}{4}$ turn back to the locked position (straight up and down), and remove the key. Visually verify that the lock pin is fully engaged into the height adjustment hole.
- The most important consideration when setting up your FLASH ball mount is to make sure the trailer is as close to level (parallel to the ground) as possible while being towed. To do this, you must set the ball height to compensate for any drop or sag caused by the tongue weight of the trailer.
 - Level the trailer by parking it on a smooth, flat surface. Measure from the ground to the frame at both the front and rear of the trailer. Use the tongue jack to make adjustments until it is level (both front and rear measurements are the same).
 - Back the tow vehicle up to the trailer, leaving a few feet of working space between them.
 - Slide the Drop Bar (#1) into the tow vehicle's receiver hitch and lock it into place.
 - Measure from the ground to the bottom of the coupler on the trailer, then lock the Ball Holder (#9) into place on the Drop Bar at that height, with the correctly sized hitch ball for your trailer coupler facing up. **See Figure 2.** You may need to invert the Drop Bar and use it in the rise position to reach the correct ball height for your particular trailer.
 - Couple the trailer to the tow vehicle, and drop the full tongue weight of the trailer on the ball mount.
 - Re-measure the coupler height, and compare it to the first measurement. The difference between these is the distance the ball mount should be adjusted upward to compensate for the trailer's tongue weight.

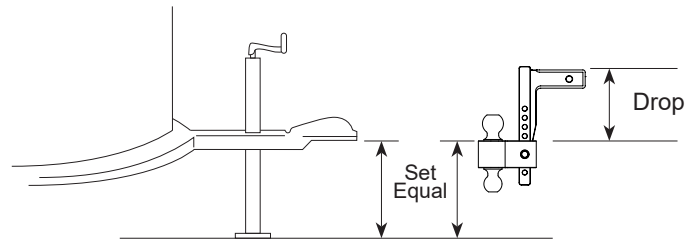


Figure 2

Figure 2: Top of ball holder height should initially be set equal to the bottom of the coupler socket height with the trailer parallel to ground, then adjusted upward to compensate for the distance it drops when the tongue weight is being carried.

Rise or drop is measured from the top of the receiver opening to the top of the ball holder.

- Uncouple the trailer.
- Raise the ball holder to the adjusted towing height, and re-pin it into place. It is better to tow with the trailer level, or with the tongue angled slightly downward. If the adjusted towing height falls between two adjustment holes, choose the lower of the two.
- Repeat this process if the loading of your trailer changes, or to set the ball mount up for a different trailer.

3. CARE AND MAINTENANCE OF BALL MOUNT

- Tow vehicle receiver preparation - Burrs, sharp edges, or corrosion (rust) inside of vehicle receiver tubes and especially around the pin holes and inner lip edge of the receiver tube must be filed off or sanded smooth and repainted before installing your Flash ball mount. Failure to properly prep your vehicle's receiver tube before installing your Flash adjustable locking ball mount can damage the ball mount and prevent the lock pins from easily retracting when the key is turned, and may void your warranty.
- Keep the lock cylinder mechanism clean by keeping the lock covers over the locks. If your lock cover is lost or missing you can purchase a new one by calling our customer service department.
- Regularly (monthly) remove your ball mount from the receiver and make sure the receiver is not rusting and corroding around the ball mount or the lock pins. This is especially important in areas where salt and other chemicals are used on roadways to melt snow and ice. Remove your Flash ball mount and store it inside the tow vehicle instead of in the receiver during winter months when it will be exposed to the sand and snow melt used on winter roads.
- Cleaning - As necessary, clean around the lock pins and inside the lock cylinder. Do this by wiping away dirt and grime with a soft cloth and/or using compressed air. When cleaning the drop bar and ball holder surfaces, **DO NOT** use degreasers or harsh cleaners - simple mild soap and water is best for aluminum. Make sure the caps are in place and covering the lock cylinders before washing/cleaning the aluminum. After washing, make sure the lock cylinders are clean and dry by blowing them out with compressed air. Aluminum rim cleaner and automobile wax can help maintain the polished luster of the aluminum, but don't get it into the lock cylinder or lock pins.
- Lubrication - Under normal use, lubrication is not required. Flash locking ball mount mechanisms are sealed and internally lubricated with high quality grease. If necessary, you may

lightly lubricate the pins and lock cylinders. Retract the locking pins and lightly grease or oil the wall of the hole. Cycle the pins, then wipe away the excess grease or oil. You may also put a small drop of lubricating oil into the lock cylinder. Wipe away any excess. Be careful not to get oil on the rubber lock covers as the oil can cause them to swell, making it harder to seat into place, which prevents them from keeping out dirt and moisture.

4. TROUBLESHOOTING GUIDE

- The key won't turn the lock:
 - Check the lock cylinder for debris. Blow clean with compressed air.
 - Check the receiver's hitch pin holes for a burr, dirt, or other obstruction.
 - Check the height adjustment holes in the drop bar for mud, damage, or other obstruction.
 - Make sure you are using the correct key, and that it has not been modified or damaged.
 - If you are sure you are using the correct key, call our customer service department for troubleshooting assistance. Someone may have tried to steal your ball mount and damaged the internal mechanisms.
- Key turns slightly, but lock pins won't retract – stuck in receiver because of receiver corrosion, deformation or burr.
 - If the pins are rusted into place (stainless lock pins don't rust, but vehicle receivers do, and the rust can shrink the size of the hitch pin hole around the stainless steel lock pins), spray penetrating oil around the pins to loosen the rust.
 - Have a helper insert the key and maintain constant but not excessive pressure on the key in a clockwise direction. Use a punch and hammer to gently tap the lock pins, alternating between one pin and then the other until the pins are completely retracted. Start with a little force and increase as necessary. Always alternate taps from one side to the other - never tap just one side.
- Can't insert key.
 - Make sure there is not dirt or debris lodged in the lock mechanism or key. Pocket lint is the most common obstruction.
 - Make sure one of the keys is not damaged and missing the safety tab at the front of the barrel. If the Key Safety Locator Tab is missing, the key may have been removed from the lock cylinder with the lock turned to an incorrect position. Call Fastway customer service for assistance.
- In most cases, our customer support team can walk you through the process or make suggestions for troubleshooting that can help resolve the problem and help prevent damage to your ball mount. Please do not hesitate to call us if you encounter a problem.

DO NOT RETURN THIS PRODUCT TO THE RETAILER

For Warranty Claims or Customer Support Contact Fastway Trailer Products Directly

8:00 – 5:00 Mon. – Fri. MST at **877.523.9103** or CustomerService@FastwayTrailer.com

Limited 1 Year Warranty: Fastway Trailer Products warrants the Flash ALBM ball mount, excluding chrome and corrosion, against latent defects in materials and workmanship under normal use and service, ordinary wear and tear is excepted, to the original owner for a period of 1 year from the first date of purchase at retail up to the value of its original purchase price. If this product is latently defective it will be replaced or repaired when a proper return authorization is obtained and the product is returned with transportation charges prepaid to Fastway Trailer Products. Fastway Trailer Products shall not be required to replace or repair any products damaged as a result of improper installation, alteration, unreasonable use, or improper maintenance including, without limitation, loading the product beyond the factory rated load capacity. This warranty does not include labor charges nor does it include transportation charges for returning the product to the consumer. To the extent allowed by law, Fastway Trailer Products shall not be liable for any incidental, consequential, or any other damages including, without limitation, breach of any implied warranty, merchantability, or fitness for a particular purpose of any Fastway product. In no event shall Fastway Trailer Products be liable for any damages other than the replacement or repair of the affected part. Authorization and warranty procedure may be obtained by calling **Fastway Trailer Products customer support at 877-523-9103.**

Great products to make towing Faster and Easier. Get more info at FastwayTrailer.com



The Fastway® Zip™ breakaway cable's coiled design keeps your cable from dragging!



Fastest and easiest automatic trailer tongue jack foot.



Fastest and easiest tandem axle wheel chock ever!



Fastest and easiest way to keep your safety chains from dragging!

Fastway Trailer Products, 353 South 1100 West, Provo, UT 84601 • FastwayTrailer.com • 877-523-9103