



# **TORKLIFT**

## **I N T E R N A T I O N A L**

**OVER 35 YEARS OF INNOVATION, QUALITY, SAFETY.**  
IMPORTANT OWNER-OPERATOR INSTALLATION INSTRUCTIONS



### **TRUE FRAME MOUNTED CAMPER TIE DOWNS**

C2204A



REVISED version 8 BY:DSK 11/17/2015  
**TECH SUPPORT (800) 246-8132**

**AFTER INSTALL, PLEASE GIVE  
THIS BOOKLET TO YOUR CUSTOMER**

# Warnings

## Truck Bed and Camper Protection

Torklift **does not** recommend installing your camper on top of a plastic bed liner (or other compressible material such as foam). These materials can act as a spring, causing increased vertical truck camper movement independent of the vehicle. Plastic bed liners can slide on the truck bed surface, and the truck camper can slide on top of the bed liner. Using a plastic bed liner or similar compressible material will void your warranty and may additionally cause truck bed and/or camper damage.

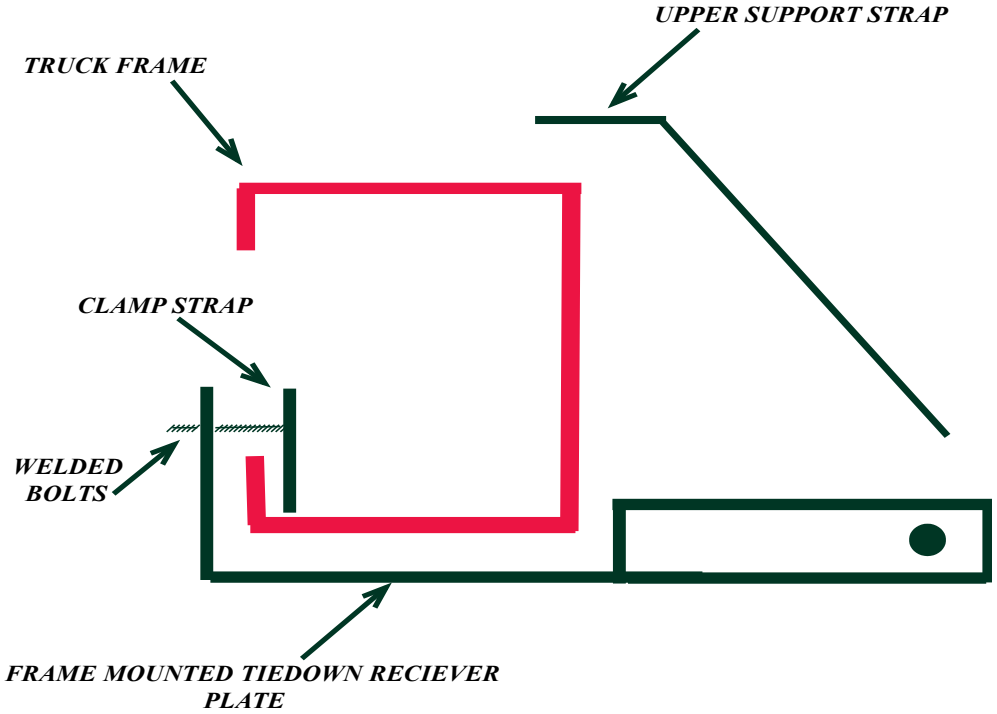
Minor movement or settling can occur in some incidental harsh driving conditions (on or off-road). A rubber bed mat is recommended to protect the truck bed and camper, but is not a requirement to maintain the Torklift legendary lifetime warranty.

## Suspension

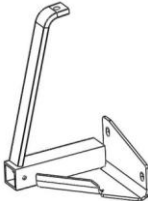
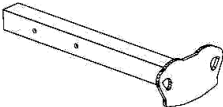

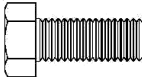
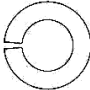
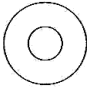




To significantly reduce body roll, sag and sway Torklift strongly recommends the StableLoad. Torklift International StableLoads improve safety, handling, and to help level your truck. More information can be found at ([www.Torklift.com/stableload](http://www.Torklift.com/stableload)).

If your truck is additionally equipped with suspension air bags Torklift cautions against over pressurization as this may lead to unsafe vehicle handling characteristics. We have found that airbags used in conjunction with StableLoads have allowed operators to lower air bag pressure by 50% or more. Only pressurize suspension air bags enough to level the truck.

# TIE DOWN DIAGRAM



## Part Inventory

	<p style="text-align: center;"><b>Tie-Down Receiver</b></p>	<p style="text-align: center;"><b>2</b></p>
	<p style="text-align: center;"><b>Straight Insert</b></p>	<p style="text-align: center;"><b>2</b></p>
	<p style="text-align: center;"><b>1/2"-13 Serrated Nut</b></p>	<p style="text-align: center;"><b>4</b></p>
	<p style="text-align: center;"><b>M12-1.75 x 50mm Hex Bolt Class 8.8</b></p>	<p style="text-align: center;"><b>2</b></p>
	<p style="text-align: center;"><b>1/2" Lock Washer High Alloy</b></p>	<p style="text-align: center;"><b>4</b></p>
	<p style="text-align: center;"><b>1/2" USS Flat Washer</b></p>	<p style="text-align: center;"><b>4</b></p>
	<p style="text-align: center;"><b>Clamp Strap</b></p>	<p style="text-align: center;"><b>2</b></p>
	<p style="text-align: center;"><b>Tie-down Capping Kit</b></p>	<p style="text-align: center;"><b>1</b></p>
	<p style="text-align: center;"><b>Tie Straps</b></p>	<p style="text-align: center;"><b>4</b></p>
	<p style="text-align: center;"><b>3/8" x 9" Rubber Hose</b></p>	<p style="text-align: center;"><b>1</b></p>

## INSTALLATION

Attention:

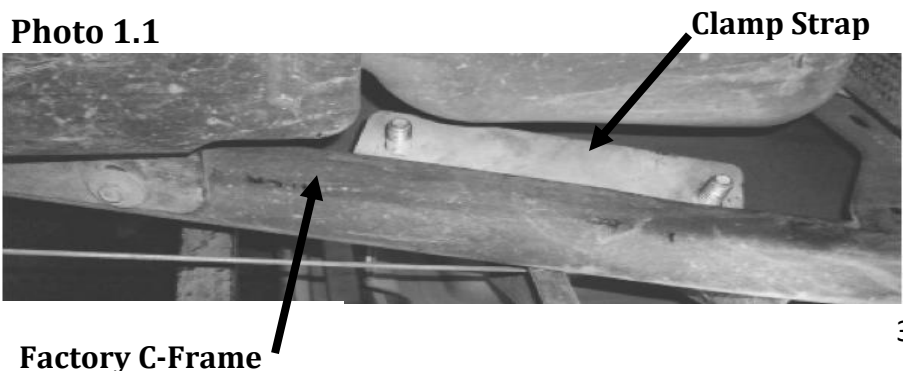
This no-drill application does not utilize any factory holes in the vehicles main frame (as there are no factory holes). The tie down receiver will be attached via heavy-duty clamp straps on the inside of the truck frame.

There is enough room to install the C2204 Tie Down between the frame and the gas tank, but if the tank is closer than normal, you may choose to loosen the straps for the tank and move it away from the frame while completing the installation.

### **Step 1 - Starting with the passenger's side**

Locate a **Clamp Strap** and place it into the inside of the factory C-frame just below the front bed support tower with the welded on bolts facing toward the vehicle driveline. See **photo 1.1**.

**Photo 1.1**



**Factory C-Frame**

**Note: This is a no-drill application and the threaded bolts will not go through any holes in the frame.**

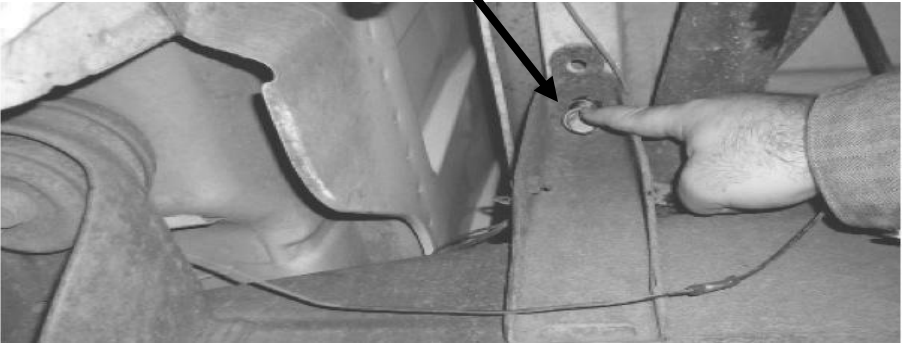
**Note: The long tapered end of the Clamp Strap points down and goes toward the front of the truck!**

## Step 2

Remove the factory bed bolt from the front bed support tower. see photo 2.1.

**Factory Bed Support Tower Bolt**

**Photo 2.1**



## Step 3

Locate the **Tie-Down Receiver** and hook it under the factory C-frame and line up the two holes in the **Tie-Down Receiver** with the two welded bolts on the **Clamp Strap**. The Receiver tube portion of the tie down will be on the rear side of the truck.

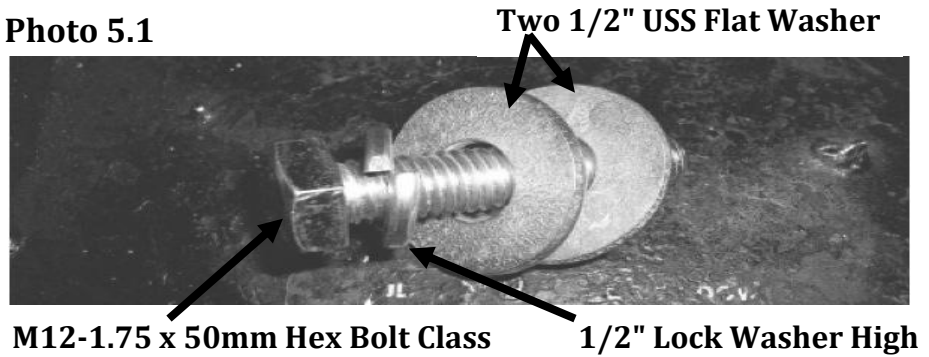
## Step 4

Align the hole on the top of the **Tie-Down Receiver** with the factory hole in the bed support tower.

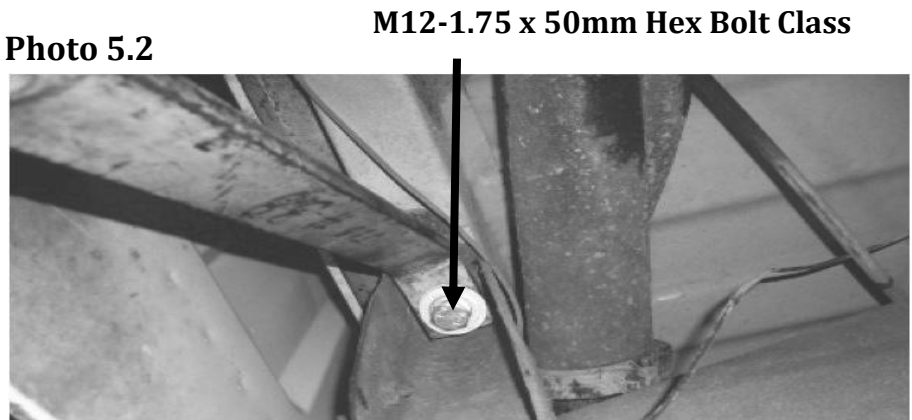
## Step 5

Place a **1/2" Lock Washer High Alloy** and two **1/2" USS Flat Washer** onto the **M12-1.75 x 50mm Hex Bolt Class 8.8** and install loosely see **photo 5.1** and **5.2**.

**Photo 5.1**



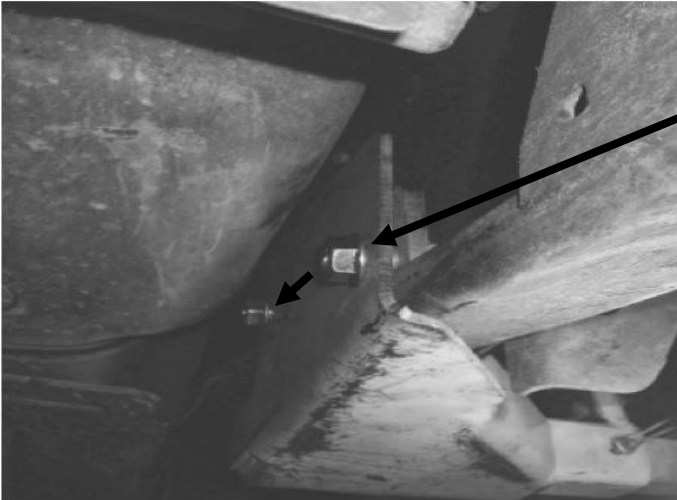
**Photo 5.2**



## Step 6

Run the welded **Clamp Strap** bolts through the aligned **Tie-Down Receiver** and secure each bolt with one **1/2"-13 Serrated Nut** see photo 6.1.

Photo 6.1



1/2"-13  
Serrated Nut

## Step 7

Repeat Step 1 through 6 for driver side installation.

**Note:**

***\*See '07 New Body Style E-brake cable addendum on page 7-8\****



**THE TIGHTENING OF THE BOLTS MUST OCCUR IN THE ORDER THAT IS STATED IN STEP 8 and 9.**

### **Step 8**

Lift the **Tie-Down Receiver** until it touches the bottom of the frame and tighten the two **1/2"-13 Serrated Nuts** to **60 ft-lbs.**(81nm)

Note: The **Clamp Strap** bolts will be slightly angled and the **1/2"-13 Serrated Nut** will not sit flat, this is normal.

### **Step 9**

Next Tighten the **M12-1.75 x 50mm Hex Bolt Class 8.8** running into the bed mount to **60 ft-lbs.**(81nm)

### **Step 10**

Once all bolts have been tightened, check to be certain that the **Tie Down Receiver** is touching the bottom of the frame.

### **Step 11**

For each **Tie-Down Receiver**, place one **Straight Insert** into the **Tie-Down Receiver**. Be sure the offset part of the **Straight Insert** points towards the front of the truck.

## Step 12

Secure each Straight Insert with one **Tie Down Lock**

*Note: You should have at least 1" clearance between the insert and the lip of the box or after market accessory.*

**The Tie-Down Installation is now complete.**

### 07' New Body Style E-Brake Cable Addendum

The e-brake cable has been relocated to above the **Tie Down**

**Receiver** on the 07' new body style truck, see **photo A1**.

Photo A1




**Depending on the year of your vehicle, the emergency brake line will be positioned either above or below the tie down receiver. To prevent any possible emergency brake line damage, we have provided you with a 3/8” piece of tubing to wrap around the line and four tie straps to secure the tubing. You will have to slit the tubing lengthwise in order to slip the line inside**

### **POWDER COATED ALUMINUM:**

To keep your Torklift products looking good follow these guidelines. All aluminum powder coated Torklift products use a high quality industrial urethane based powder coat. Due to the extreme, harsh, undercar environment that your Torklift products live in, (consistently sprayed with corrosive road chemicals such as salt, and road debris), Torklift does not warranty the power coated finish.

To minimize corrosion from these factors on powder coated steel products, Torklift recommends regularly cleaning and inspecting the powder coated surface and touching up any affected areas with an enamel or urethane based aerosol paint product. If there are any areas of surface rust, there are also aerosol spray rust converters available on the market that can be used as a preparation to touch-up paint application. These finish maintenance products are available at any automotive parts supplier.

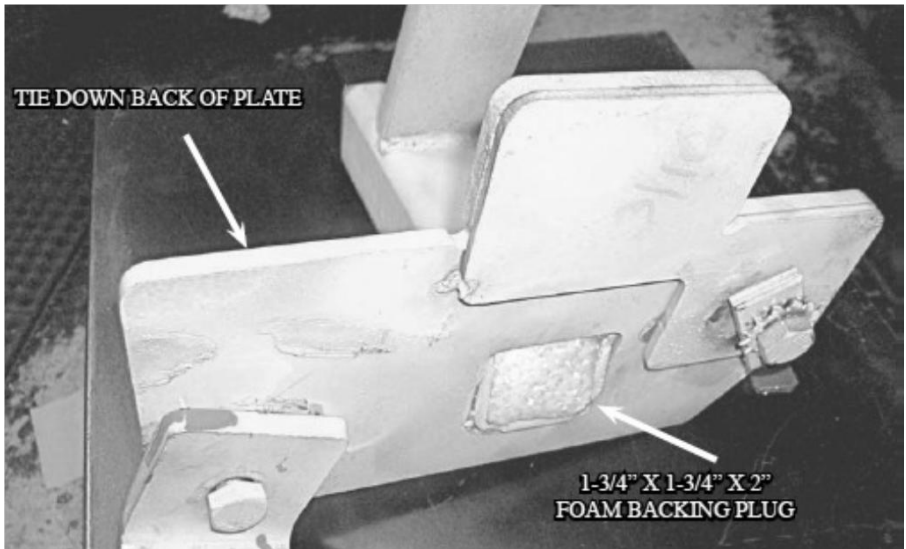
## TD Finishing Kit

	1-3/4" x 1-3/4" X 2" Foam Backing Plug	2
	2" x 2" x 1-1/2" Receiver Cap	2

### Step 1

Insert one **1-3/4" x 1-3/4" x 2" Foam Backing Plug** into the back of the **Tie Down Receiver** opening. If the back of the receiver is inaccessible, insert the Foam Backing Plug in the front of the **Tie Down Receiver** and press it back with the **Tie Down Insert** see **Photo 1.1**

### Photo 1.1



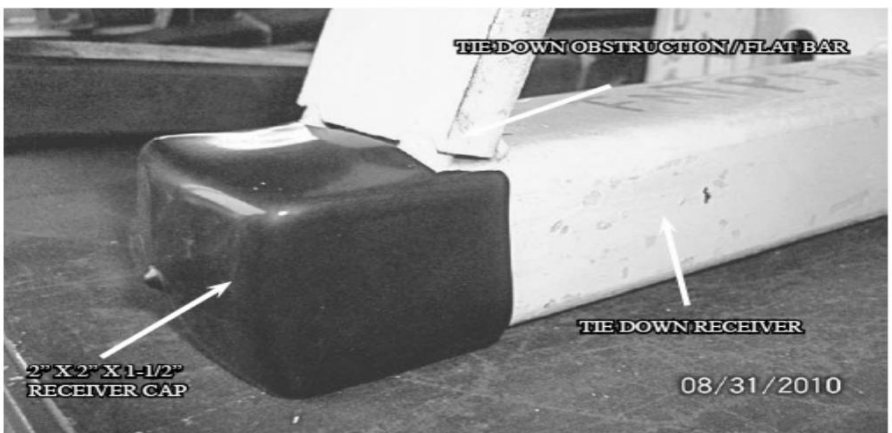
## Step 2

Insert one 2" x 2" x 1-1/2" Receiver Cap over the end of the Aluminum Tie Down Receiver. See **Photo 2.1** (if the 2" x 2" x 1-1/2" Receiver Cap does not fit over the receiver, you will need to notch it out using a box knife or similar) See **Photo 2.2**.

**Photo 2.1**



**Photo 2.2**



# ***TIEDOWN INSERT INSTALLATION INSTRUCTIONS***

*On one end of each of your tie down inserts is a triangular plate referred to by Torklift as a bullet plate. Your tie down inserts should be installed with the shorter side of the bullet plate facing away from each other, i.e.. The shorter side of the front insert should point to the front of the truck and the shorter side of the rear insert should point towards the rear of the truck.*

*Once installed, attach the TorkLift directional stickers to the face of the bullet plate on the insert as a reminder.*

## ***DRIVERS SIDE FRONT***



## ***DRIVERS SIDE REAR***



***IMPORTANT NOTE:*** *Your tie down inserts are designed to have clearance inside of the receiver. This is to account for road debris, as well as aid in installation and removal. Some rattle may be expected if the inserts are left installed while not under load from the camper.*



### **Frame Mounted Tie Downs**

Leading the camper tie down industry in strength, quality, advanced design and installation. TorKLift TRUE frame mounted tie downs are far superior to all tie down systems available.

The TorKLift system is unique in its design and is patented. Four independent tie down points (with no belly or crossbar) working much like your receiver type trailer hitch as the inserts are removable allowing the system to be virtually undetectable when not in use. They are designed for each make and model to fit tight to the frame so as not to compromise ground clearance. TorKlift tie downs are not universal 'one size fits all' therefore all the problems with correct fit for each particular application have been eliminated.

**VISIT [WWW.TORKLIFT.COM](http://WWW.TORKLIFT.COM) FOR MORE INFORMATION**

### **Original SuperHitch & SuperHitch Magnum**



High strength extended hitch system engineered for safely towing all types of trailers behind your truck and camper. With a max towing capacity of 14,000 lbs. with an extension\* , (17,000 lbs. to 20,000 lbs. without\*) the Original SuperHitch and Superhitch Magnum are rated the strongest in the industry.

**CONTACT YOUR LOCAL DEALER FOR MORE DETAILS**

# **Torklift International Limited**

## **Lifetime**

### **Warranty Information**

**322 Railroad Ave North, Kent, WA 98032**

Torklift will require proof of purchase to register, with pictures of any defective product before issuing a replacement. Torklift will not register any product without proof of purchase, which can be faxed, scanned, emailed, or mailed to the information provided below. Torklift warrants it's hitches, custom hitch receivers, frame mounted tie downs, turnbuckles, and accessories (excluding wire harnesses which carry a 90 day warranty) from date of purchase against defects in material and workmanship under normal use and service for the ownership life of the original consumer purchaser. ALL COMMERCIAL APPLICATIONS ARE WARRANTED FOR A PERIOD OF 90 DAYS FROM THE DATE OF INSTALLATION/SERVICE. Torklift will replace FREE OF CHARGE any part which proves defective in material or workmanship when presented to Torklift, TRANSPORTATION CHARGES PREPAID by purchaser, at the address above. THIS WARRANTY IS LIMITED TO DEFECTIVE PARTS REPLACEMENT ONLY. LABOR CHARGES AND/OR DAMAGE INCURRED IN INSTALLATION OR REPLACEMENT, AS WELL AS INCIDENTAL AND CONSEQUENTIAL DAMAGES CONNECTED THEREWITH ARE EXCLUDED. This warranty does not include the finish or paint on our products. Rusting, cracking or peeling of the finish is also excluded. Some states do not allow the exclusion or limitation of incidental or consequential damages, so the above limitation or exclusion may not apply to you. Any damage to Torklift products as a result of misuse, abuse, neglect, accident, improper installation or any use violative of instructions furnished by Torklift or WHEN USED IN ANY COMMERCIAL APPLICATION WILL VOID THE WARRANTY. This warranty gives you specific legal rights, and you may also have rights which vary from state to state. With warranty service, you may be able to go to a small claims court, a state court or a federal district court.



**322 Railroad Ave North, Kent, WA 98032**

**Phone (800) 246-8132 Fax (253) 854-8003**

**Or visit our website: [www.TorkLift.com](http://www.TorkLift.com)**

Dear Valued Customer,

Thank you for making TorkLift your choice for truck, camper packages and accessories for your vehicle. By choosing TorkLift products, you have chosen a company that has been serving the RV industry for nearly 40 years and whose name has become synonymous with strength, quality and advanced design and installation.

Please take a few moments of your time to complete the Product Registration Warranty Card on the next page. When registering your newly purchased TorkLift products, you can be assured that your contact information is secure and that you and your product are getting the attention and respect that you deserve.

Thank you again for choosing TorkLift quality products.

**Register for your lifetime warranty and receive a free Torklift  
International gift.**

To Fax: Send copies of the questionnaire, warranty card and receipt to  
253-854-8003

To E-mail: Send copies of the questionnaire, warranty card and receipt to  
[warranty@torklift.com](mailto:warranty@torklift.com)

To Mail: Send to Torklift International

**322 Railroad Ave North, Kent, WA 98032**



**OVER 35 YEARS OF INNOVATION, QUALITY, SAFETY.**

## OFFICIAL WARRANTY REGISTRATION CARD

PLEASE FILL OUT THIS FORM COMPLETELY AND RETURN TO TORKLIFT WITHIN

30 DAYS OF PURCHASE ACCOMPANIED BY A COPY OF YOUR ORIGINAL RECEIPT

### 1. PART(S) PURCHASED

TODAY'S DATE: \_\_\_\_\_

PART #: \_\_\_\_\_ PART #: \_\_\_\_\_

PART #: \_\_\_\_\_ PART #: \_\_\_\_\_

PART #: \_\_\_\_\_ PART #: \_\_\_\_\_

### 2. PURCHASER INFORMATION

NAME: \_\_\_\_\_

ADDRESS: \_\_\_\_\_

CITY: \_\_\_\_\_ STATE: \_\_\_\_\_ ZIP / POSTAL CODE: \_\_\_\_\_

PHONE: (\_\_\_\_) \_\_\_\_\_ - \_\_\_\_\_ EMAIL: \_\_\_\_\_

### 3. TRUCK INFORMATION

YEAR: \_\_\_\_\_ MAKE: \_\_\_\_\_

MODEL: \_\_\_\_\_ BED LENGTH: \_\_\_\_\_

### 4. CAMPER INFORMATION

YEAR: \_\_\_\_\_ MAKE: \_\_\_\_\_ MODEL: \_\_\_\_\_

### 5. DEALER INFORMATION

PURCHASED FROM: \_\_\_\_\_

ADDRESS: \_\_\_\_\_

CITY: \_\_\_\_\_ STATE: \_\_\_\_\_ ZIP / POSTAL: \_\_\_\_\_

INSTALLED BY: OWNER ABOVE DEALER ANOTHER DEALER

IF ANOTHER DEALER, WHO: \_\_\_\_\_