



TRUE FRAME MOUNTED CAMPER TIE DOWNS

IMPORTANT OWNER-OPERATOR INSTALLATION INSTRUCTIONS

C2211/FMTPJ07CHLDCC5.5

FRONT TIEDOWNS

CHAIN AND CLEVIS REMOVED 07.06.2011

**Minor movement (or settling) can occur in some incidental harsh driving conditions
(on or off road).**

A rubber bed mat is not a requirement to maintain the lifetime warranty on a Torklift system, but a strong recommendation, simply as a safety precaution to protect the truck bed, the bottom of the camper and to give the camper additional support.

Warning!!

TORKLIFT DOES NOT RECOMMEND: Installing your truck camper in your truck on top of a drop in plastic bed liner!!! THIS WILL VOID YOUR WARRANTY!

The drop in plastic bed liners can slide on top of the truck bed surface, and the camper can slide on top of the slick surface of the bed liner. The liner can also act as a spring causing a trampoline effect increasing vertical truck camper movement, independent of the vehicle, possibly resulting in truck bed damage and/or camper damage!



REVISED vers3 BY: MWP 10/31/2012

TECH SUPPORT (800) 246-8132

**AFTER INSTALL, PLEASE GIVE
THIS BOOKLET TO YOUR CUSTOMER**

C2211 Parts Inventory

2 - Tie Down Receivers	2 - Special Bent Inserts (6 1/2" with 1 1/2" shim)
2 - 1/4" Pins	8 - 1/2" x 1 1/2" Hex Bolts
2 - 1/2" x 1 1/4" Hex Bolts	6 - 1/2" Thin Nylock Nuts
2 - 1/2" Star Washers	2 - Two Hole Angle Brackets
2 - 11/16" x 2 1/2" x 3/16" Flat Washers	2 - 1/2" Lock Washers
2 - 1/2" Flat Washers	2 - 1/2" Hex Nuts
2 - M16 Flange Nuts	2 - Single-hole Angled Plate (06 models only)

1. On 01-06 models, start by taking two 1 1/2" bolts and thread on two nylock nuts so that they are approximately centered on the threads. Repeat step for one 1 1/4" bolt and nylock nut. 07-08 models use all three 1 1/2" bolts with nylock nuts (**See Photo 1.1**).

2. The tie down will have three nuts welded on for set bolt adjustment purposes. 01-06 models, thread one 1 1/4" bolt with nylock nut into the bottom hole (**Photo 1.1**), and thread two 1 1/2" bolts with nylock nuts into the remaining two upper holes. 07-08 models use all three 1 1/2" bolts with nylock nuts (**See Photo 1.1**).

3. Beginning with the driver's side, locate front leaf spring bracket (**Photo 3.1**) and remove the factory nut using 15/16" wrench and 12mm wrench (**Photo 3.2**).

4. Place the tiedown's slotted hole over the front leaf spring bolt (**Photo 4.1 & 4.2**). On 01-06 models, place the two hole angle bracket on top of bolt and tiedown (**See Photo 4.3**). Place a 1 1/2" bolt with starwasher through the two hole angle bracket and tiedown (**Photo 4.4**), then place a flatwasher, lockwasher, and a nut on open end of bolt and tighten with 3/4" wrench. Replace leaf spring bracket nut in step 1 with lower profile M16 flange nut, then snug (**do not tighten**) (**See Photo 4.5**). 07-08 models will use 11/16" x 2 1/2" 3/16" flat washer provided, instead of two hole angle bracket.

5. Back out the lower side adjustment set bolts until they contact the frame-to-cab mount, then using two 3/4" wrenches-placing one on bolt head and the other on the nylon nut. Keeping the wrench on the bolt head steady, tighten the nylock nuts until they wedge against the tiedown as jam nuts (**Photo 5.1**). Use the top bolts to adjust the angle of the tiedown until it's straight. Make sure all bolts are tight against the frame.

***Note:** Adjustment set bolts (**pointed out in Photo 1.1**) must touch the truck frames cab mount bracket to prevent tiedown from rotating, (**Photo 5.2**). **On 2006 models only**, the top adjustment set bolt will not be in contact with the spring hanger bracket.

6. Repeat steps 1-3 for passenger's side.

***NOTE:** THE INCLUDED TIEDOWN INSERTS HAVE TWO PRE-DRILLED PIN LOCATIONS. WHEN HOOKING UP YOUR CAMPER, EITHER HOLE MAY BE USED PROVIDING THERE IS A MINIMUM OF 2" CLEARANCE BETWEEN THE CHAIN/TURN-BUCKLE ATTACHING ASSEMBLY AND THE TRUCK BED WALL. THERE ARE ALSO TWO PRE-PUNCHED HOLES LOCATED ON THE TRIANGULAR BULLET PLATE ON THE END OF EACH INSERT. WHILE EITHER OF THE TWO HOLES CAN BE USED, THE HOLE THAT PROVIDES THE GREATEST ANGLE IS PREFERRED.

INSTALLATION PHOTOS

Photo 1.1



Photo 3.1



Photo 3.2



Photo 4.1



INSTALLATION PHOTOS

Photo 4.2 - 06 Models Only



Photo 4.3 - 04-06 Installation

Two Hole Angle Bracket

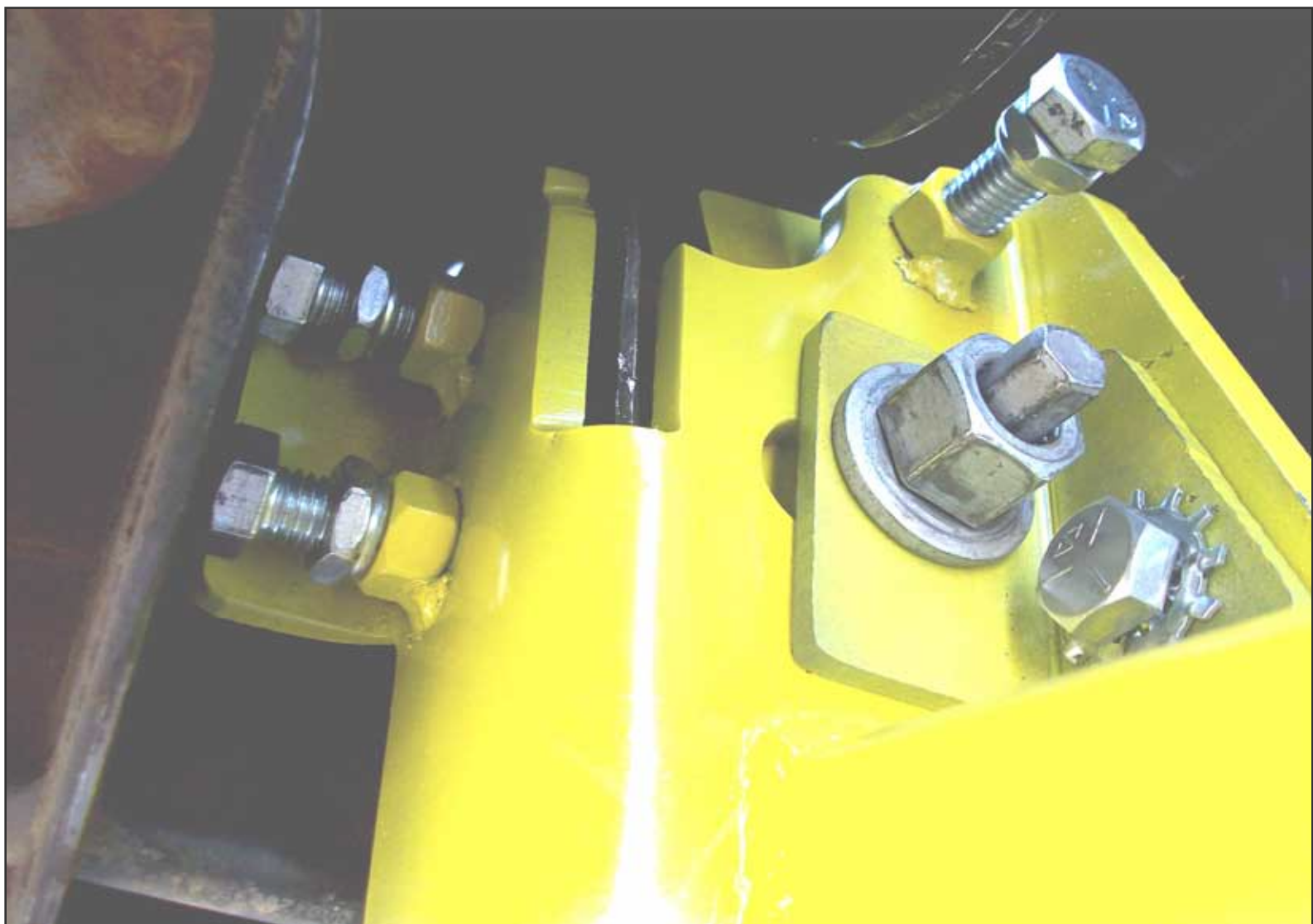


INSTALLATION PHOTOS

Photo 4.4 - 04-06 Installation



Photo 4.5 - 04-06 Installation



INSTALLATION PHOTOS

Photo 5.1 - 07-08 Installation

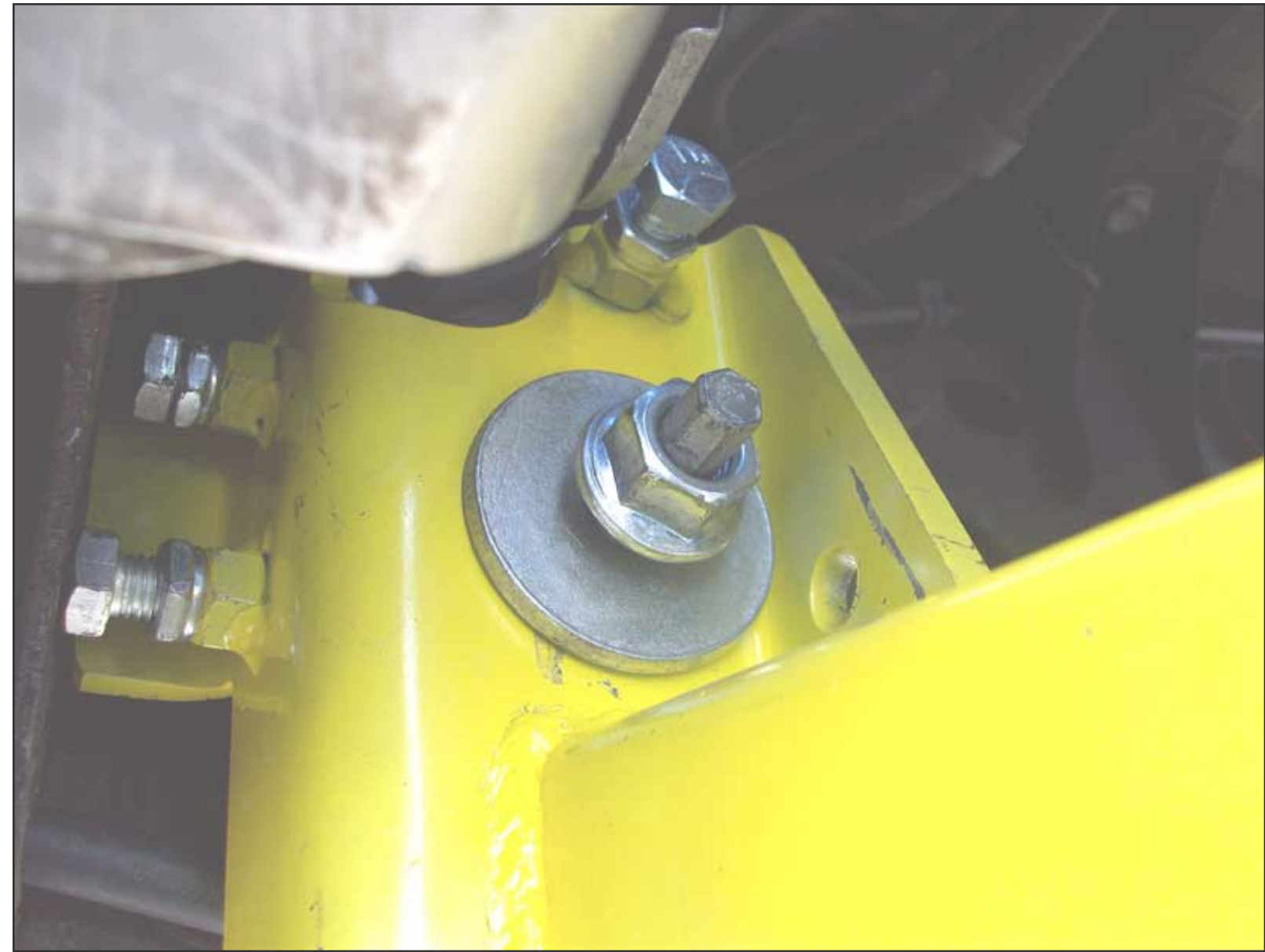
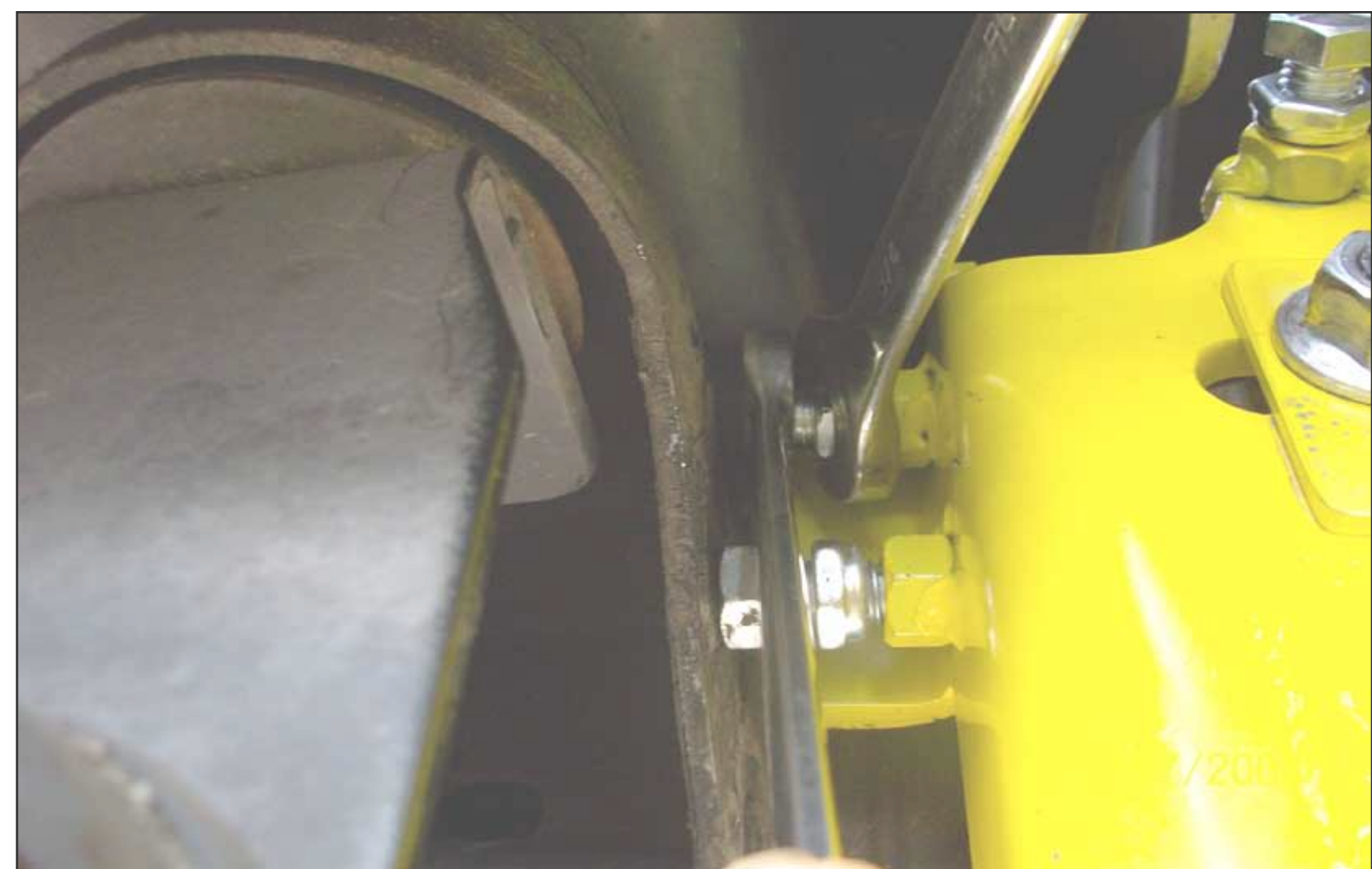


Photo 5.2 - All Models



INSTRUCTIONS FOR MAINTENANCE OF POLISHED STAINLESS STEEL PRODUCTS



Torklift utilizes quality grade 304 stainless steel in this product.

304 stainless steel is well known for its anti corrosive properties, however in some environments such as coastal regions or when in contact with some road chemicals, corrosion may occur.

We recommend occasional polishing of our product to maintain its attractive finish. Use an approved stainless steel cleaning/polishing product which can be purchased from any automotive supplier.



- ▶ *Protect and Finish Off Your Tie Downs*
- ▶ *Minimizes the Effects of the Environment*
- ▶ *Kit includes: 2 cap covers, 2 expansion plugs*

Tie Down Cover

FINISHING KIT

TORKLIFT
INTERNATIONAL
Celebrating Over 35 Years

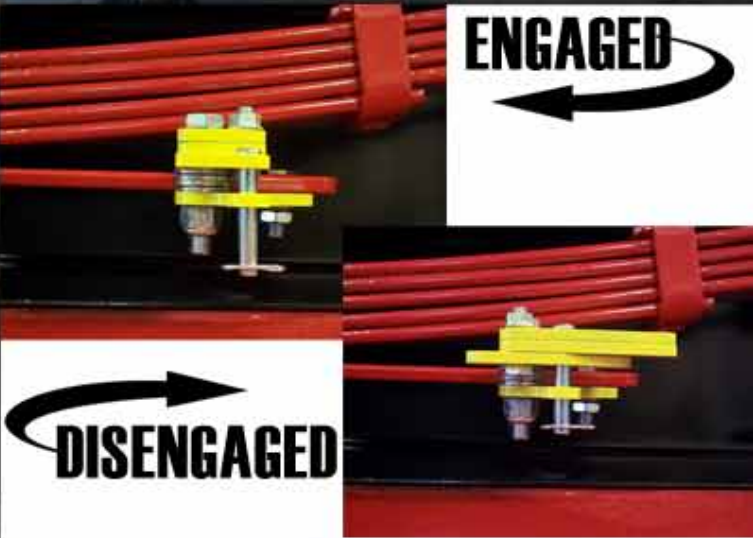
1.800.246.8132
PART #: A7009

PART NUMBER: A7009

THE LOWEST COST, MOST EFFECTIVE SUSPENSION UPGRADE AVAILABLE

"I just installed a set of StableLoads on my Ford truck. It now rides level and handles like the bed is empty. This is one of the most cost effective and efficient methods of shifting weight to the front axle and eliminating rear sag I have ever seen. Great product!"

-Michael Davis



**NEW A7310 QUICK DISCONNECT
AND A7311 MODELS AVAILABLE**



QUICK DISCONNECT

STABLELOAD™

**FITS FOR FORD / DODGE / CHEVY / GMC / NISSAN
/ TOYOTA / MAZDA / MITSUBISHI / ETC.**

**CATCH PRODUCT
VIDEO**



PROUDLY MADE



IN THE USA

GlowStep *The Ultimate Scissor Step*

"I love this thing. Its light and the steps glow in the dark. It folds up nice and I can store it inside one of my storage bays. What a difference going up and down a decent set of steps compared to those 'death trap' steps that the factories put on."

-Kerry Stark, PA



- ▶▶ LIFETIME WARRANTY
- ▶▶ GLOWS IN THE DARK FOR 10 HOURS WITH ONLY 5 MINUTES OF LIGHT EXPOSURE
- ▶▶ SELF ILLUMINATING STEPS - NO BATTERIES
- ▶▶ SAFELY ENTER AND EXIT YOUR RV AFTER DARK
- ▶▶ SUREGRIP™ STEP TREAD - NO GRIP TAPE
- ▶▶ STORES IN POSITION
- ▶▶ LOCKABLE
- ▶▶ EXCLUSIVE: ADJUSTS TO BASEMENT MODEL CAMPERS
- ▶▶ 100% ALUMINUM AND STAINLESS STEEL
- ▶▶ STAINLESS BOLTED HINGES ALLOW FOR EASY STEP ADDITION OR REMOVAL (ADD-A-STEP KIT PART # A7501)

GlowStep Lock

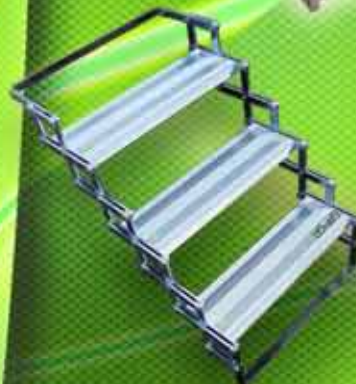


Part #: A7509

Add-a-Step



Part #: A7501



2 Step - A7502	Mounting Bracket Height -19.5"	Max Weight Cap.: 350lbs. with GlowGuide Handrail**
3 Step - A7503	Mounting Bracket Height -27"	Max Weight Cap.: 350lbs. with GlowGuide Handrail**
4 Step - A7504	Mounting Bracket Height -34.5"	Max Weight Cap.: 350lbs. with GlowGuide Handrail**
5 Step - A7505	Mounting Bracket Height -42"	Max Weight Cap.: 300lbs. with GlowGuide Handrail**
6 Step - A7506	Mounting Bracket Height -49.5"	Max Weight Cap.: 300lbs. with GlowGuide Handrail**

** Maximum GlowStep capacity only achieved when used with GlowGuide handrail system. Maximum GlowStep capacities are 25 lbs less WITHOUT GlowGuide handrail. GlowGuide handrail system sold separately

GLOWGUIDE MULTI-USE SAFETY HANDRAIL



- ▶ LIMITED LIFETIME WARRANTY
- ▶ ULTRA LIGHT WEIGHT (44 OUNCES)
- ▶ GLOWS FOR UP TO 10 HOURS
- ▶ FROM IN-USE TO STORAGE IN SECONDS
- ▶ HANDRAIL ARMS TELESCOPE FROM 32" TO 53"
- ▶ LOCKS TO YOUR RV
- ▶ UNIVERSAL MOUNTING BRACKETS
- ▶ DOUBLES AS WASH BRUSH
- ▶ PROUDLY MADE IN THE USA

GLOWGUIDE HANDRAIL
APPLICATIONS:
TRUCK CAMPERS
MOTORHOMES
TRAVEL TRAILERS
TOY HAULERS
5TH WHEELS & MORE

**HANDRAIL CONVERTS
INTO WASH BRUSH
IN SECONDS**



**Stores
in
Position**

REPLACEMENT BRUSH
ALSO AVAILABLE



Part # A7601

SCISSOR STEP KIT:

Part # A7600

UNIVERSAL RV STEP KIT

Part# A7610

***GLOWGUIDE LOCK
SOLD SEPARATE**



Part # S9600



SUPERHITCH



"(I have the) SuperHitch with 36" Extension. It's heavy, but worth it towing horses. Plus I use the Torklift tie downs AND I have always been able to get them on the phone for help when needed. To me, that is priceless."

***Jon Schuman
Pasadena, CA***



- ➔ ***Lifetime warranty***
- ➔ ***17k weight distributing***
- ➔ ***15k weight carrying***
- ➔ ***Highest ratings in the industry***
- ➔ ***No-drill (most applications)***
- ➔ ***Hardened reinforced hitch pin locations***
- ➔ ***2"x2" upper and lower receiver***
- ➔ ***Made in the USA***
- ➔ ***High penetration dual shield welding***
- ➔ ***Same capacity in upper or lower receiver***

CATCH PRODUCT
VIDEO



Hidden Power

Under bed auxiliary battery mount

- Yellow to show contrast, product is black

MFG #: Ford A7703
Other applications coming soon



- ▶ Add additional batteries under your truck bed
- ▶ No-drill / easy install
- ▶ Attaches and detaches quickly for battery service
- ▶ Securely clamps to truck frame
- ▶ Hidden when in use
- ▶ No loss of ground clearance
- ▶ Lifetime warranty
- ▶ High impact powder coat black
- ▶ Works with group 24 and 27 batteries

Kit Includes:

- ▶ Battery box frame mount
- ▶ Mounting fasteners
- ▶ 2 Quick disconnect 10 to 8 gauge connectors male & female 12 volt

Comes with Group 27 battery box - A7727

Comes with Group 24 battery box - A7724

No battery box included - A7703



FORTRESS



GASLOCK

Protect expensive propane tanks from theft!



Kit includes:

- One GasLock assembly
- One lock with 2 keys

1/2" GasLock set

3/8" GasLock set

MFG Part#

A7702

A7701

- 🔒 Allows tanks to be securely locked to trailers, towables and RVs
- 🔒 The only lock available for propane tanks in the industry

- 🔒 No tools, no modifications
- 🔒 Affordable investment
- 🔒 High impact aircraft grade aluminum

Power Armor^{DH}

The locking
battery box



Battery box MFG#: A7700

Lock MFG#: S9501

- ⚡ Prevents battery theft
- ⚡ Bolts to your trailer tongue
- ⚡ Holds up to two spare batteries, group 24 or 27
- ⚡ Lifetime warranty
- ⚡ Heavy gauge diamond plate aluminum
- ⚡ Slide top for easy battery access

***Kit Includes:**

- ⚡ Battery box
- ⚡ Lock

**Batteries not included*

Frame Mounted Tie Downs

Leading the camper tie down industry in strength, quality, advanced design and installation. TorkLift TRUE frame mounted tie downs are far superior to all tie down systems available.



The TorkLift system is unique in its design and is patented. Four independent tie down points (with no belly or crossbar) working much like your receiver type trailer hitch as the inserts are removable allowing the system to be virtually undetectable when not in use.

They are designed for each make and model to fit tight to the frame so as not to compromise ground clearance. TorkLift tie downs are not universal 'one size fits all' therefore all the problems with correct fit for each particular application have been eliminated.

**VISIT WWW.TORKLIFT.COM
FOR MORE INFORMATION**

Original SuperHitch & SuperHitch Magnum

High strength extended hitch system engineered for safely towing all types of trailers behind your truck and camper. With a max towing capacity of 14,000 lbs. with an extension* , (17,000 lbs. to 20,000 lbs. without*) the Original SuperHitch and Superhitch Magnum are rated the strongest in the industry.



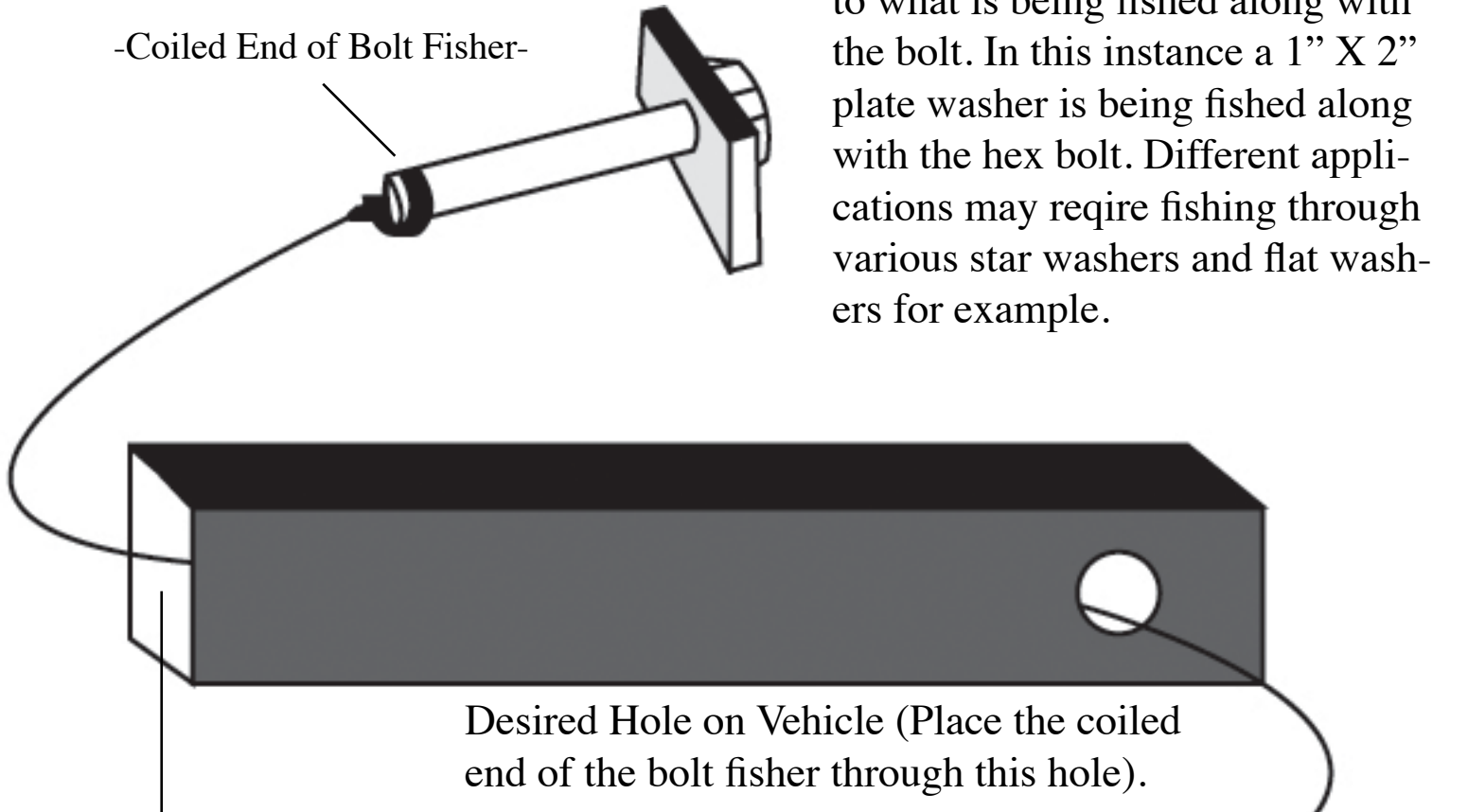
CONTACT YOUR LOCAL DEALER FOR MORE DETAILS

*Weight capacity vary depending on the SuperHitch and SuperTruss extension setup.

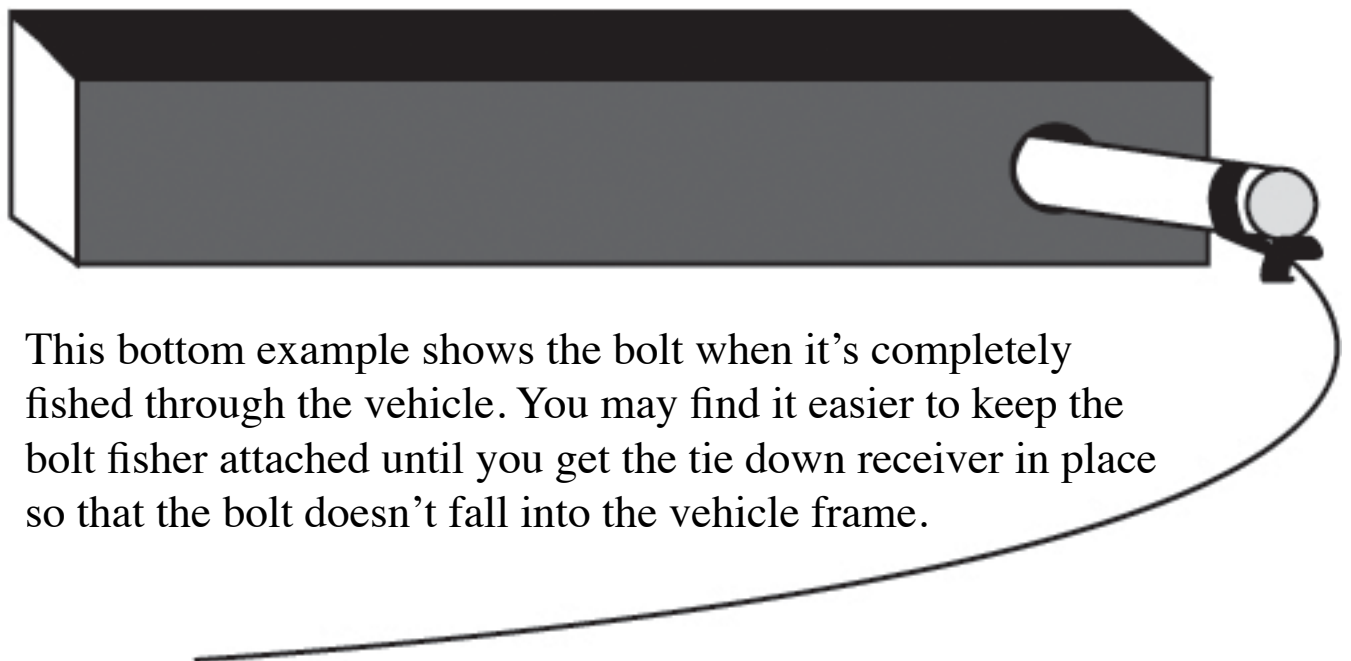
TORKLIFT'S BOLT FISHING GUIDE

Your guide to understanding the installation of our frame mounted tie downs.

Note: The hardware may vary as to what is being fished along with the bolt. In this instance a 1" X 2" plate washer is being fished along with the hex bolt. Different applications may require fishing through various star washers and flat washers for example.



This side of the Bolt Fisher should come out of a hole where the required hardware (for example 1" X 2" plate washer) can pass through.



This bottom example shows the bolt when it's completely fished through the vehicle. You may find it easier to keep the bolt fisher attached until you get the tie down receiver in place so that the bolt doesn't fall into the vehicle frame.

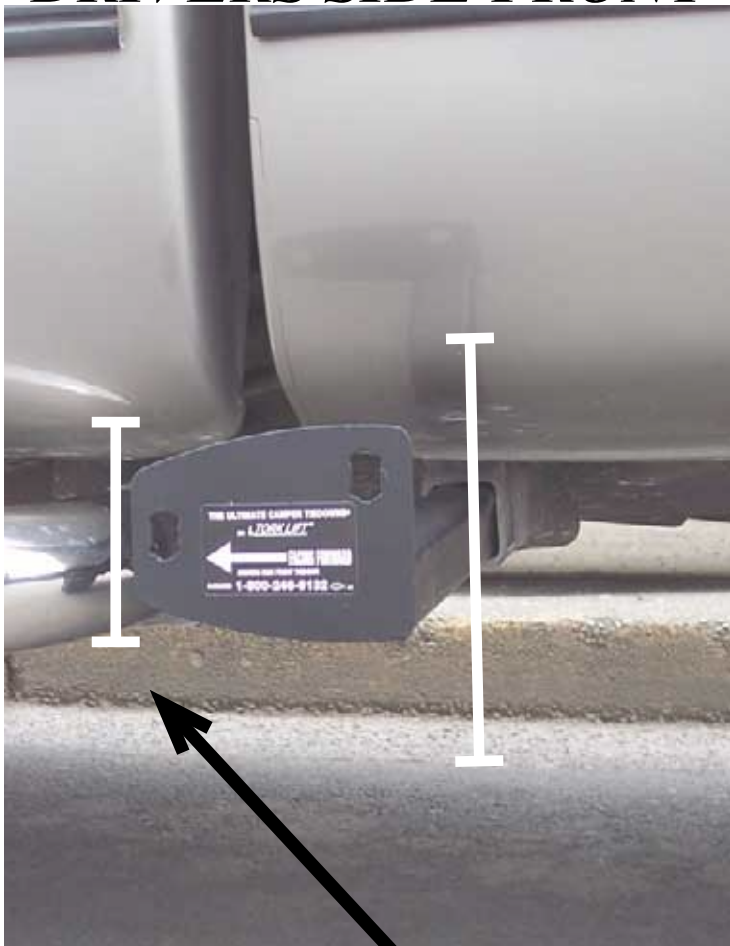
WARNING: PULLING TOO HARD ON THE BOLT FISHER CAN RESULT IN LOST FASTENERS, OR BROKEN BOLT FISHER.

TIEDOWN INSERT INSTALLATION INSTRUCTIONS

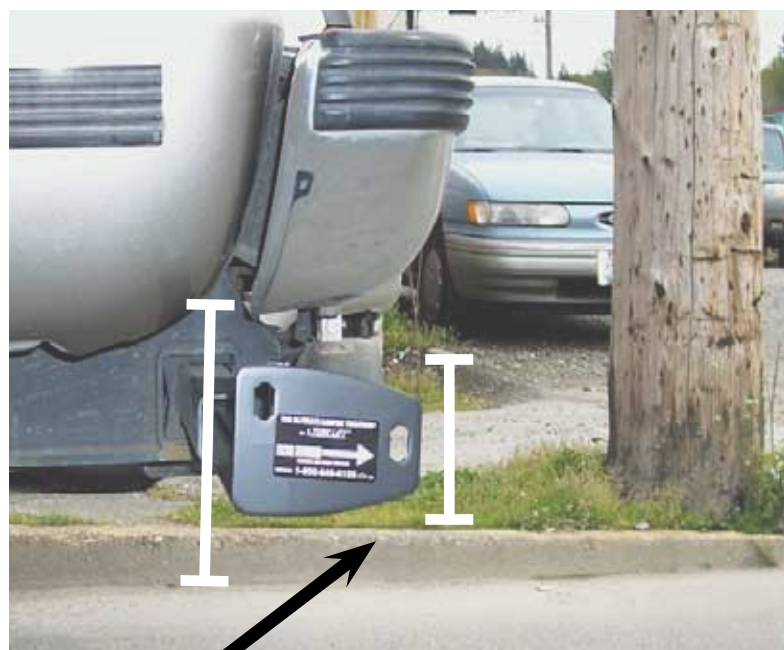
On one end of each of your tiedown inserts is a triangular plate referred to by Torklift as a bullet plate. Your tiedown inserts should be installed with the shorter side of the bullet plate facing away from each other, i.e.. The shorter side of the front insert should point to the front of the truck and the shorter side of the rear insert should point towards the rear of the truck.

Once installed, attach the TorkLift directional stickers to the face of the bullet plate on the insert as a reminder.

DRIVERS SIDE FRONT



DRIVERS SIDE REAR



SHORTER SIDE

TURNBUCKLE SPRINGLOAD OPTIONS

CONTACT YOUR LOCAL DEALER FOR MORE DETAILS

Torklift requires all 4 tiedown points to be spring loaded in order to qualify for our manufacturer's

Industry Exclusive "Camper Anchor" and "Truck Frame" Warranty

BASIC SPRINGLOAD KIT - S9000

Includes 2 External Springload Cylinder Units,
2 Heavy Duty Forged Turnbuckles and 24" of Chain.
Also comes with the TorkLift Lifetime Guarantee.



FASTGUNS LEVER ACTION TURNBUCKLES

FOR BED MOUNTED TIEDOWNS

S9520-GREY SS / S9521-WHITE SS / S9527-POLISHED SS

FOR FRAME MOUNTED TIE DOWNS

S9522-GREY SS/ S9523-WHITE SS/ S9526-POLISHED SS

S9529-BLACK SS

FRAME OR BUMPER MOUNTED TIEDOWNS

Includes 2 Stainless Steel Turnbuckles with an Internal
"Set" Spring. Available in 2 Lengths and 4 Finishes
(Grey, White, Polished Stainless Steel and Black)

Also comes with the TorkLift Lifetime Guarantee.

FASTGUN DERRINGERS Polished Stainless S9528

Transforms Your Pre-Existing Conventional
Turnbuckles into a Lever Action
FastGun Style Turnbuckle.

Kit includes 4 Lever Action Derringers.

Also comes with the TorkLift Lifetime Guarantee.



SPRINGLOAD XL KIT - S9050A

This set includes 2 Long Square Bodied
Turnbuckles with an Internal "Set" Spring.

The Springload XL Kit comes with a High Impact Powder-coated Finish and is compatible with the FastGun Derringer handles. Also comes with the TorkLift Lifetime Guarantee.

RECOMMENDED TRUCK CAMPER

INSTALLATION INSTRUCTIONS

When securing any heavy load (especially a camper) in your truck bed, your front tie down points should pull the load forward as much as possible. Some camper anchor points may differ with different manufacturers, as well as the camper jack mounting locations. Your Torklift tie down inserts have offset triangular brackets to increase the angle of pull. These are designed to be used in the front facing forward, and the rear facing rearward but can be used in either front or rear. These recommendations are to be considered and followed as a basic rule of thumb . Obviously there will be some applications where this may not be possible. At a minimum, if opposite pull of both front and rear tiedowns cannot be achieved for whatever reason, you should have at least a forward pull at the front or rear location.

If your camper does not come with Rubber Bumpers on the front lower portion of the camper, installing Rubber Bumpers (Torklift has Rubber Bumpers available Part A7001) or using a block of wood such as a 2 x 4 in the bed, will prevent the camper from damaging the front bulk head of the truck bed.

Minor movement (or settling) can occur in some incidental harsh driving conditions (on or off road). A rubber bed mat is not a requirement to maintain the lifetime warranty on a Torklift system, but a strong recommendation simply as a safety precaution to protect the truck bed, the bottom of the camper and to give the camper additional support.

TORKLIFT DOES NOT RECOMMEND: Installing your truck camper in your truck on top of a drop in plastic bed liner!!! The drop in plastic bed liners can slide on top of the truck bed surface, and the camper can slide on top of the slick surface of the bed liner. The liner can also act as a spring causing a trampoline effect increasing vertical truck camper movement, independent of the vehicle, possibly resulting in truck bed, and camper damage!

INSTRUCTIONS FOR FINISH MAINTENANCE **OF TORKLIFT PRODUCTS**

POWDER COATED STEEL:

To keep your Torklift products looking good follow these guidelines. All steel powder coated Torklift products are sandblasted for maximum adhesion and use a high quality industrial urethane based powder coat. Due to the extreme, harsh, undercar environment that your Torklift products live in, (consistently sprayed with corrosive road chemicals such as salt, and road debris), Torklift does not warranty the powder coated finish.

To minimize corrosion from these factors on powder coated steel products, Torklift recommends regularly cleaning and inspecting the powder coated surface and touching up any affected areas with an enamel or urethane based aerosol paint product. If there are any areas of surface rust, there are also aerosol spray rust converters available on the market that can be used as a preparation to touch-up paint application. These finish maintenance products are available at any automotive parts supplier.

POLISHED STAINLESS STEEL :

Torklift utilizes quality grade 304 stainless steel in our stainless steel polished products. 304 stainless steel is well known for its anti-corrosive properties. However, in some environments such as coastal regions or when coming in contact with some road chemicals, corrosion may occur.

For a quick clean simply use WD40 and a cloth rag. We also recommend occasional polishing of our polished stainless products to maintain their attractive finish. Use an approved stainless steel chrome or aluminum mag wheel polish cleaning product which can be purchased from any automotive parts supplier.

Torklift International Limited

Lifetime Warranty Information

1901 Fryar Ave Sumner, WA 98390

Torklift will require proof of purchase to register, with pictures of any defective product before issuing a replacement. Torklift will not register any product without proof of purchase, which can be faxed, scanned, emailed, or mailed to the information provided below. Torklift warrants its hitches, custom hitch receivers, frame mounted tie downs, turnbuckles, and accessories (excluding wireharnesses which carry a 90 day warranty) from date of purchase against defects in material and workmanship under normal use and service for the ownership life of the original consumer purchaser. **ALL COMMERCIAL APPLICATIONS ARE WARRANTED FOR A PERIOD OF 90 DAYS FROM THE DATE OF INSTALLATION/SERVICE.** Torklift will replace **FREE OF CHARGE** any part which proves defective in material or workmanship when presented to Torklift, **TRANSPORTATION CHARGES PREPAID** by purchaser, at the address above. **THIS WARRANTY IS LIMITED TO DEFECTIVE PARTS REPLACEMENT ONLY. LABOR CHARGES AND/OR DAMAGE INCURRED IN INSTALLATION OR REPLACEMENT, AS WELL AS INCIDENTAL AND CONSEQUENTIAL DAMAGES CONNECTED THEREWITH ARE EXCLUDED.** This warranty does not include the finish or paint on our products. Rusting, cracking or peeling of the finish is also excluded. Some states do not allow the exclusion or limitation of incidental or consequential damages, so the above limitation or exclusion may not apply to you. Any damage to Torklift products as a result of misuse, abuse, neglect, accident, improper installation or any use violative of instructions furnished by Torklift or **WHEN USED IN ANY COMMERCIAL APPLICATION WILL VOID THE WARRANTY.** This warranty gives you specific legal rights, and you may also have rights which vary from state to state. With warranty service, you may be able to go to a small claims court, a state court or a federal district court.



1901 Fryar Avenue Phone (800) 246-8132
Sumner WA, 98390 Fax (253) 854-8003

Or visit our website: www.TorkLift.com

Dear Valued Customer,

Thank you for making TorkLift your choice for truck, camper packages and accessories for your vehicle. By choosing TorkLift products, you have chosen a company that has been serving the RV industry for nearly 40 years and whose name has become synonymous with strength, quality and advanced design and installation.

Please take a few moments of your time to complete the Product Registration Warranty Card on the next page. When registering your newly purchased TorkLift products, you can be assured that your contact information is secure and that you and your product are getting the attention and respect that you deserve.

Thank you again for choosing TorkLift quality products.

Register for your lifetime warranty and receive a free Torklift International gift.

To Fax: Send copies of the questionnaire, warranty card and receipt to 253-854-8003

To E-mail: Send copies of the questionnaire, warranty card and receipt to warranty@torklift.com

To Mail: Send to Torklift International 1901 Fryar Ave Sumner, Wa 98390



OFFICIAL WARRANTY REGISTRATION CARD

PLEASE FILL OUT THIS FORM COMPLETELY AND RETURN TO TORKLIFT WITHIN 30 DAYS OF PURCHASE ACCOMPANIED BY A COPY OF YOUR ORIGINAL RECEIPT

TODAY'S DATE: _____

1. PART(S) PURCHASED

PART #: _____ PART #: _____

PART #: _____ PART #: _____

2. PURCHASER INFORMATION

NAME: _____

ADDRESS: _____

CITY: _____ STATE: _____ ZIP / POSTAL CODE: _____

PHONE: (____) _____ - _____ EMAIL: _____

3. TRUCK INFORMATION

YEAR: _____ MAKE: _____

MODEL: _____ BED LENGTH: _____

4. CAMPER INFORMATION

YEAR: _____ MAKE: _____ MODEL: _____

5. DEALER INFORMATION

PURCHASED FROM: _____

ADDRESS: _____

CITY: _____ STATE: _____ ZIP / POSTAL: _____

INSTALLED BY: OWNER ABOVE DEALER ANOTHER DEALER

IF ANOTHER DEALER, WHO: _____