



TORKLIFT

I N T E R N A T I O N A L

OVER 35 YEARS OF INNOVATION, QUALITY, SAFETY.



TRUE FRAME MOUNTED CAMPER TIE DOWNS

IMPORTANT OWNER-OPERATOR INSTALLATION INSTRUCTIONS

D3109A



REVISED vers10 BY: JL 8/6/15

TECH SUPPORT (800) 246-8132

**AFTER INSTALL, PLEASE GIVE
THIS BOOKLET TO YOUR CUSTOMER**

Warnings

Truck Bed and Camper Protection

Torklift **does not** recommend installing your camper on top of a plastic bed liner (or other compressible material such as foam). These materials can act as a spring, causing increased vertical truck camper movement independent of the vehicle. Plastic bed liners can slide on the truck bed surface, and the truck camper can slide on top of the bed liner. Using a plastic bed liner or similar compressible material will void your warranty and may additionally cause truck bed and/or camper damage.

Minor movement or settling can occur in some incidental harsh driving conditions (on or off-road). A rubber bed mat is recommended to protect the truck bed and camper, but is not a requirement to maintain the Torklift legendary lifetime warranty.

Suspension

To significantly reduce body roll, sag and sway Torklift strongly recommends the StableLoad. Torklift International StableLoads improve safety, handling, and to help level your truck. More information can be found at (www.Torklift.com/stableload).

If your truck is additionally equipped with suspension air bags Torklift cautions against over pressurization as this may lead to unsafe vehicle handling characteristics. We have found that airbags used in conjunction with StableLoads have allowed operators to lower air bag pressure by 50% or more. Only pressurize suspension air bags enough to level the truck.

D3109A PARTS INVENTORY

- 2- Tie Down Receiver
- 2- Bent Insert
- 2- 1/2" x 2" Hex Bolt
- 4- 1/2" Flat Washer
- 2- 1/2" Lock Washer
- 2- 1/2" Hex Nut
- 2- 1" x 2" Plate Washer
- 2- Snapper Pins
- 2- Talon Insert Sticker

TD Finishing Kit: installation on page 11

- 2- 1-3/4" x 1-3/4" X 2" Foam Backing Plug
- 2- 2" x 2" x 1-1/2" Receiver Cap

INSTALLATION INSTRUCTIONS:

LOCATE AND INVENTORY ALL PARTS TO BECOME FAMILIAR WITH ALL BRACKETS READ AND UNDERSTAND ALL INSTRUCTIONS. MAKE SURE THE VEHICLE IS IN PARK, ON A LEVEL SURFACE AND WHEELS ARE CHOCKED BEFORE STARTING THE INSTALLATION.

2010 AND LATER MODEL VEHICLE INSTALLATION:

For 2003-2009 applications, refer to page 7

Step 1-

Starting on the passenger side, locate the section of frame where the bumper bracket attaches near the end of the frame.

Step 2-

Remove the three factory bolts that attach the bumper bracket to the frame. (Photo 2.1 & 2.2)

PASSENGER SIDE
REMOVE THESE TWO FACTORY BOLTS

PHOTO 2.1

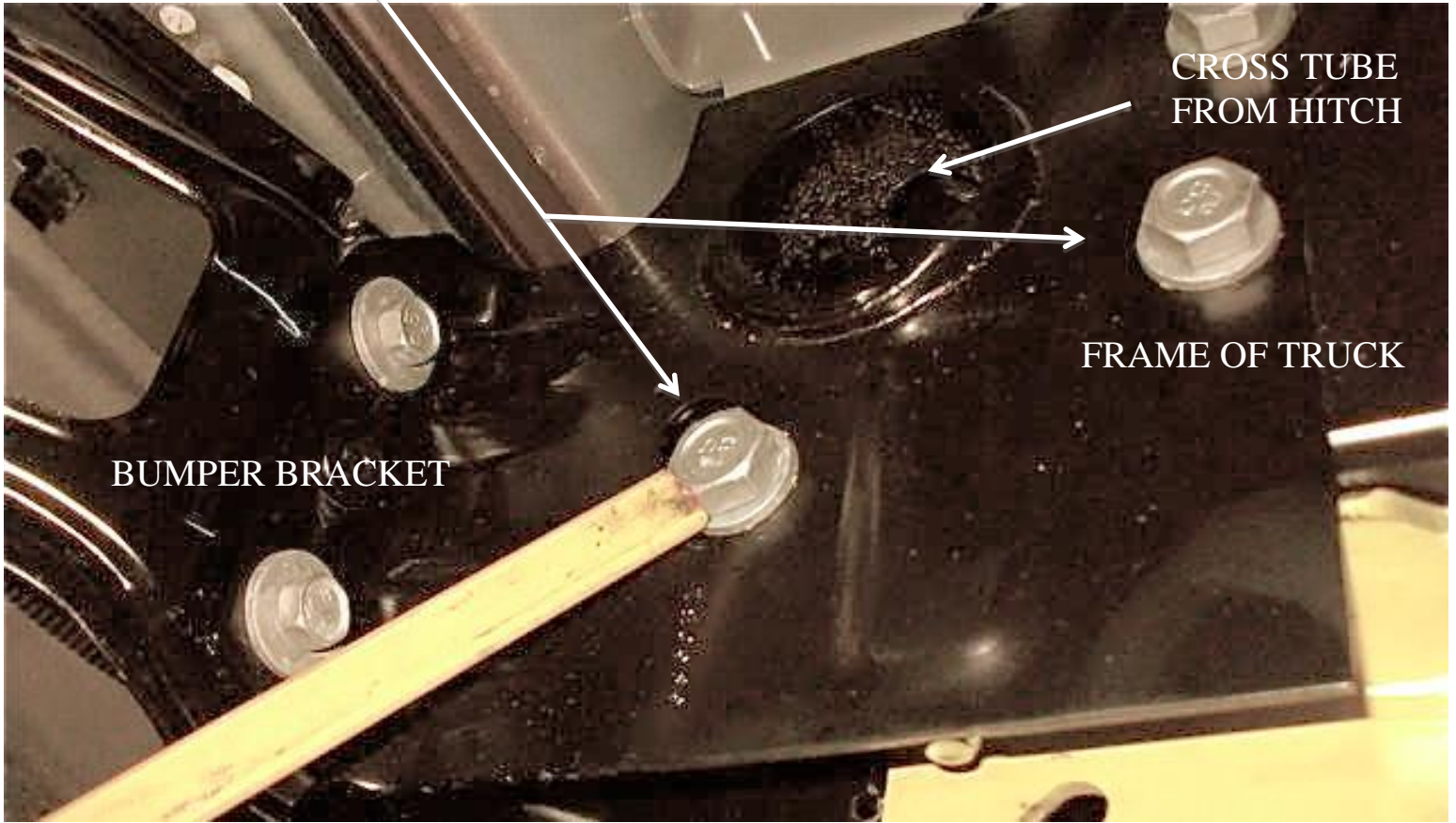
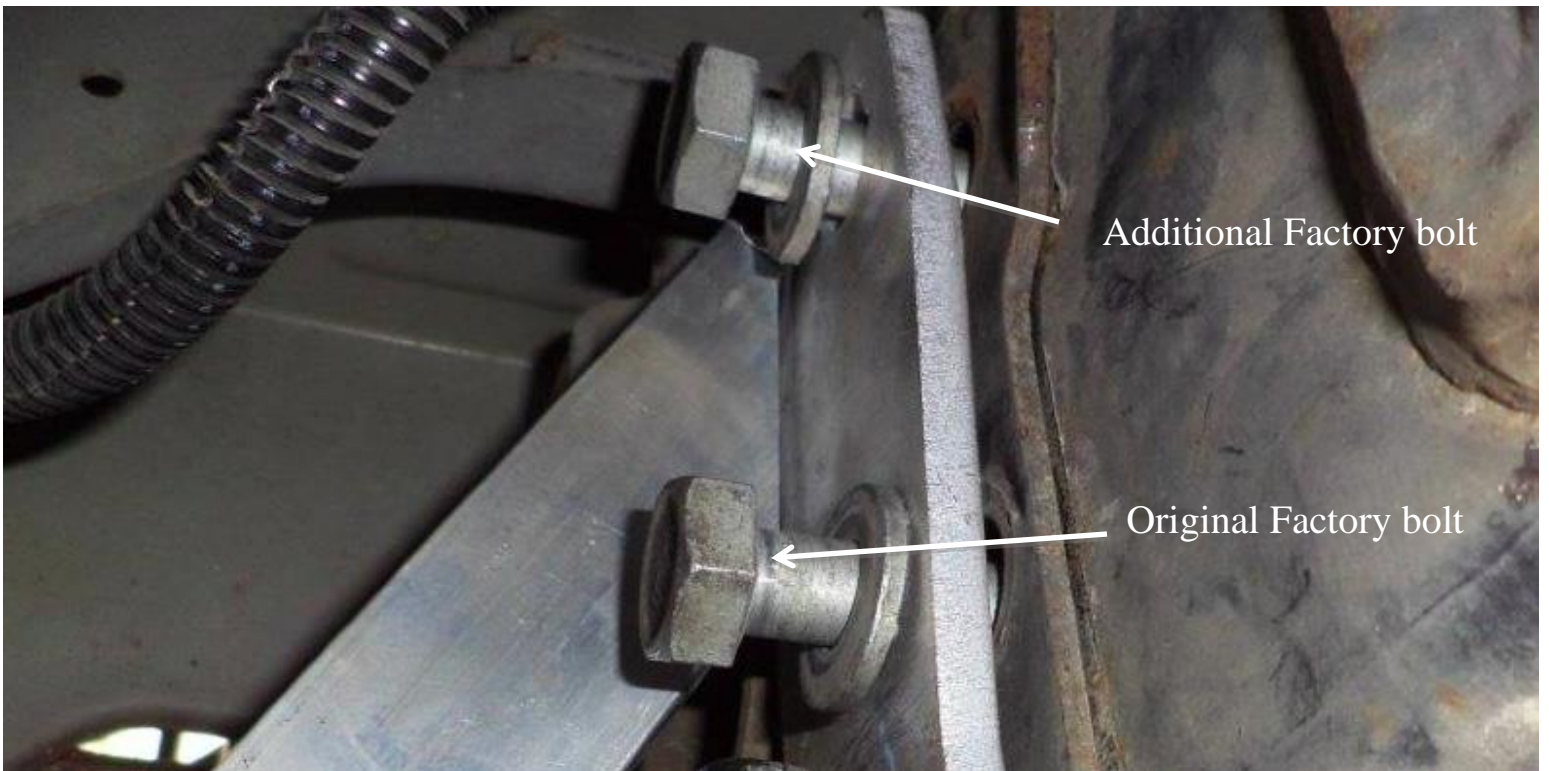


PHOTO 2.2



Step 3-

Locate the oval hole on the inside of the frame. The oval hole is located on a piece of metal material that drops down from the factory hitch. Slide the Tie Down Receiver onto the outside of the frame. Line up the holes with the bumper bracket, Tie Down Receiver, and the frame then reinstall the factory fasteners (Photo 3.1 & 3.2)

TIE DOWN PLATES GO OVER THE FRAME. RE-INSERT FACTORY BOLTS THROUGH HOLES PASSENGERS SIDE

PHOTO 3.1

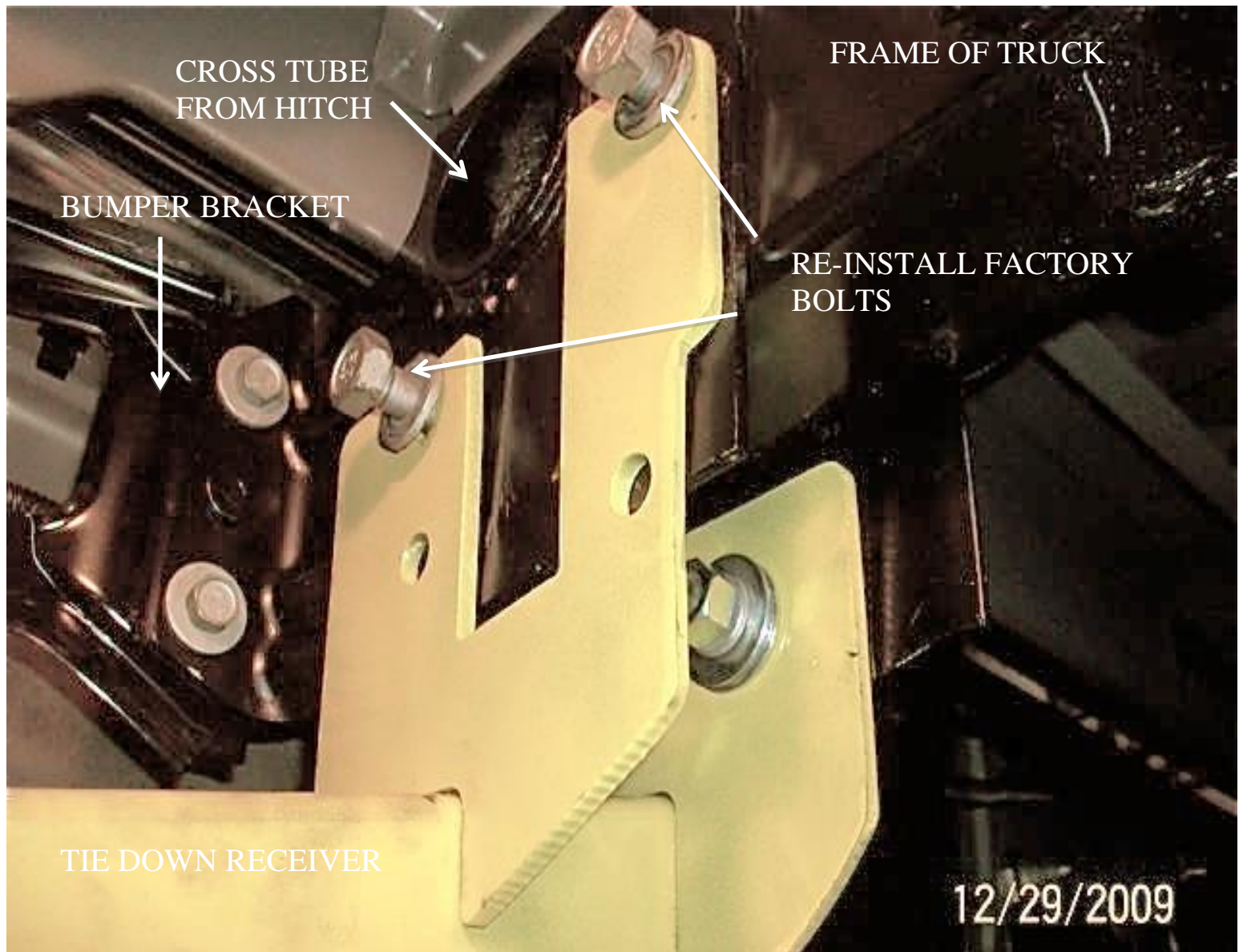
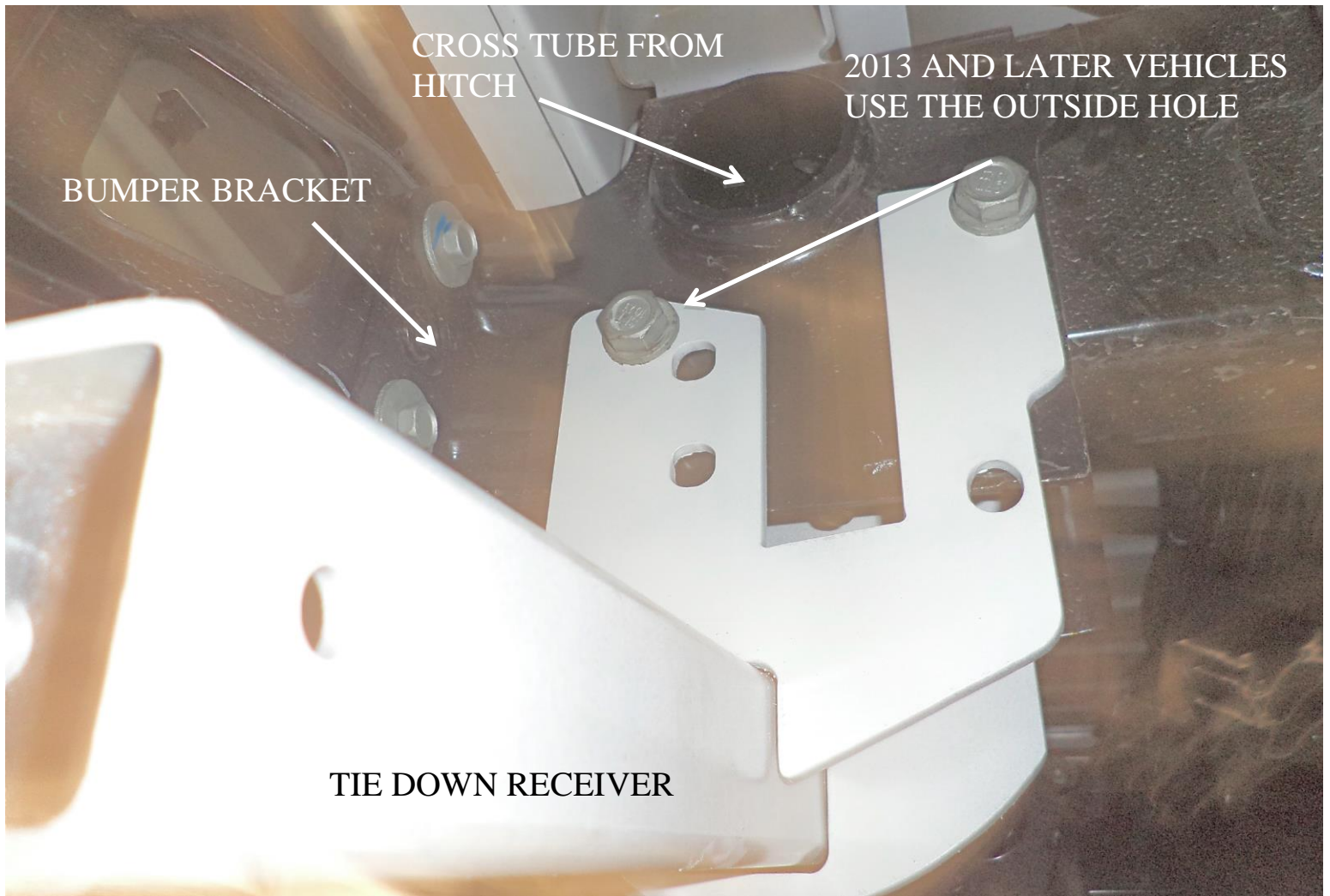


PHOTO 3.2



Step 4-

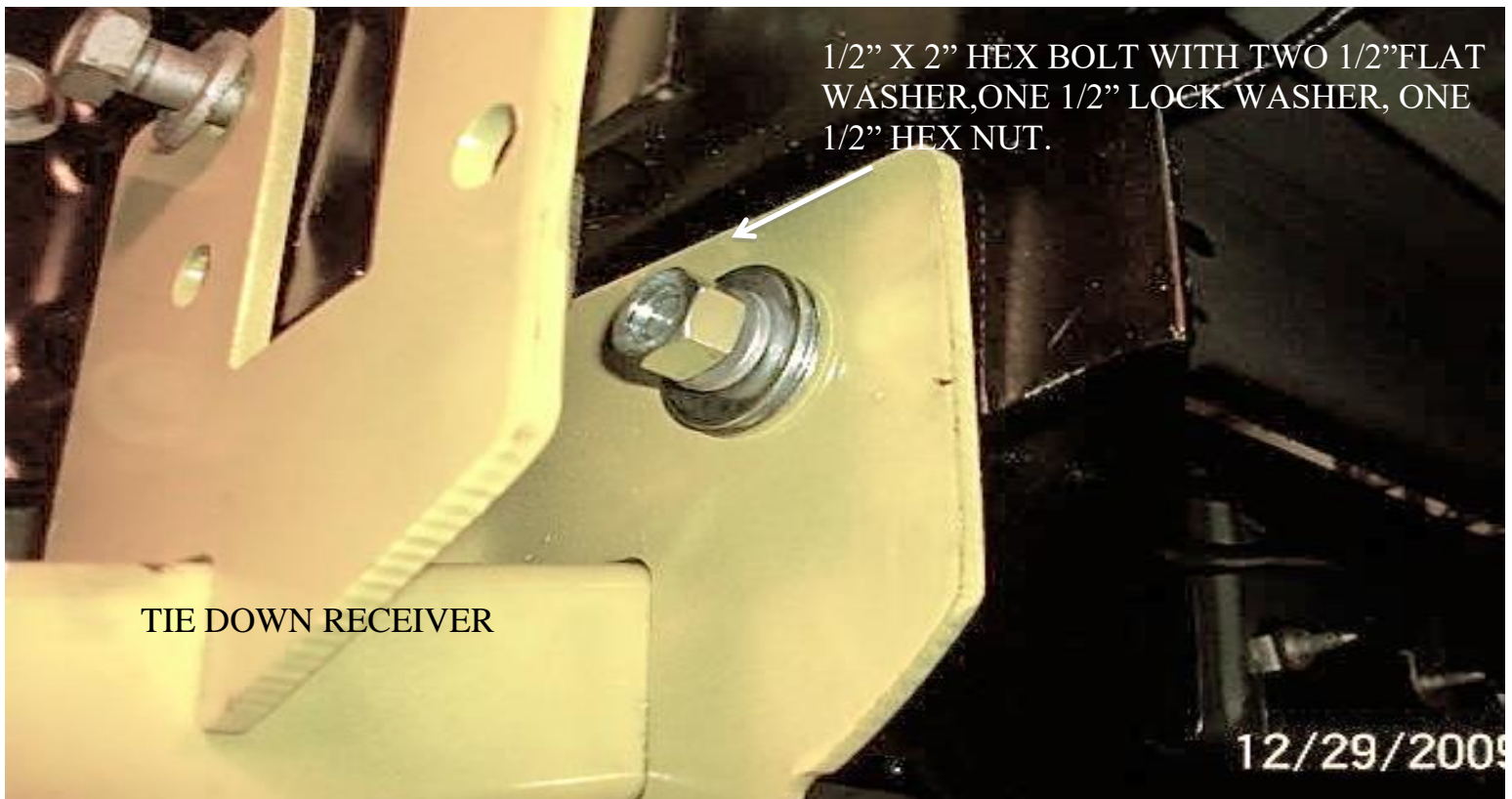
Line up the inside bracket with the oval hole on the hitch. Insert one 1/2" X 2" Hex Bolt and one 1" X 2" Plate Washer into the oval hole and through the Tie Down Receiver plate. Insert two 1/2" Flat Washer, one 1/2" Lock Washer and one 1/2" Hex Nut onto the previously installed 1/2" X 2" Hex Bolt and hand tighten. (Photo 4.1 & 4.2)

PHOTO 4.1



PASSENGER SIDE OUTSIDE OF FRAME

PHOTO 4.2



Step 5-

Line up the holes with the bumper bracket, Tie Down Receiver, and the frame then re-install the factory fasteners. Torque all hardware to 60 ft-lbs.(81nm)

INSTALLATION INSTRUCTIONS 2003-2009:

Step 6-

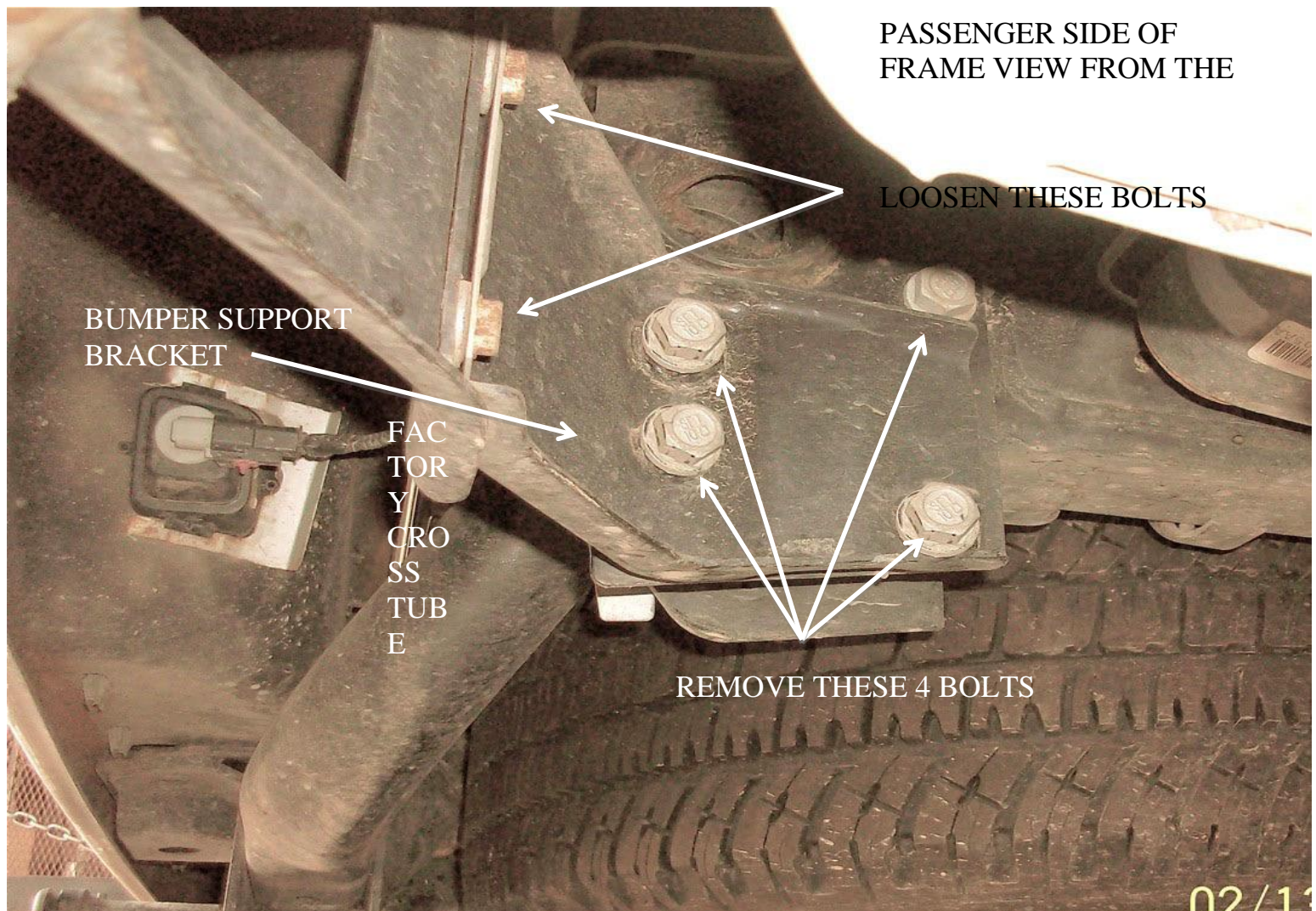
Starting on the passenger side, Locate the section of frame where the bumper bracket attaches near the end of the frame.

Step 7-

Remove the four factory bolts that attach the bumper bracket to the frame and loosen the back two bolts on the bumper bracket seen on (Photo 7.1)

Note: On the D3109A installation it will be necessary to remove a third factory bolt. (Refer to Photo 2.2)

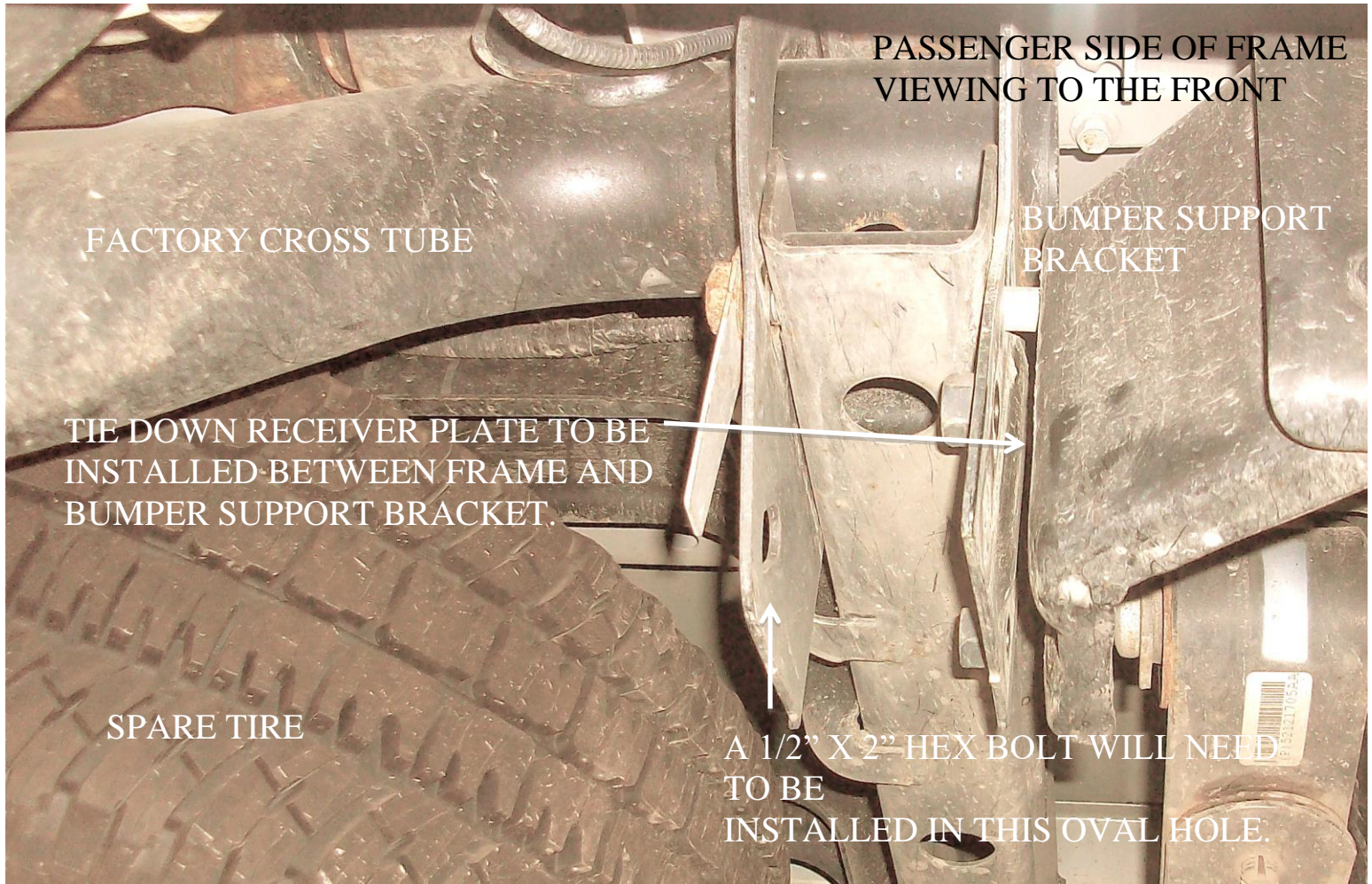
PHOTO 7.1



Step 8-

Move the bumper bracket away from the frame and locate the oval hole on the inside of the frame. The oval hole is located on a piece of metal material that drops down from the factory hitch. (Photo 8.1)

PHOTO 8.1



Step 9-

Slide the outside of the Tie Down Receiver between the bumper bracket and the outside of the frame. Line up the inside bracket with the oval hole on the hitch. Insert one 1/2" X 2" Hex Bolt and one 1" X 2" Plate Washer into the oval hole and through the Tie Down Receiver plate. Insert two 1/2" Flat Washer, one 1/2" Lock Washer and one 1/2" Hex Nut onto the previously installed 1/2" X 2" Hex Bolt and hand tighten. (Photo 9.1, 9.2 & 9.3)

PHOTO 9.1

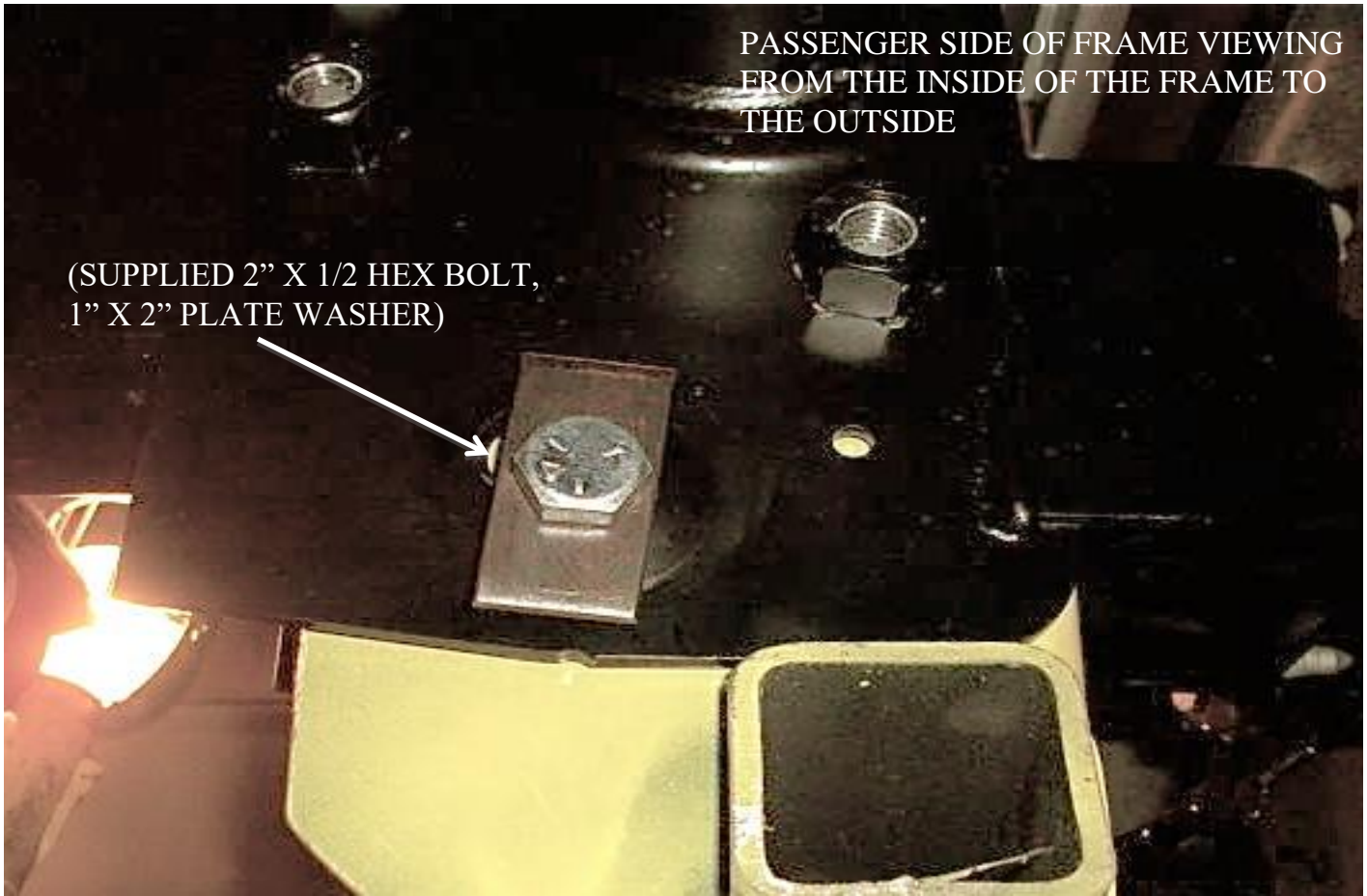
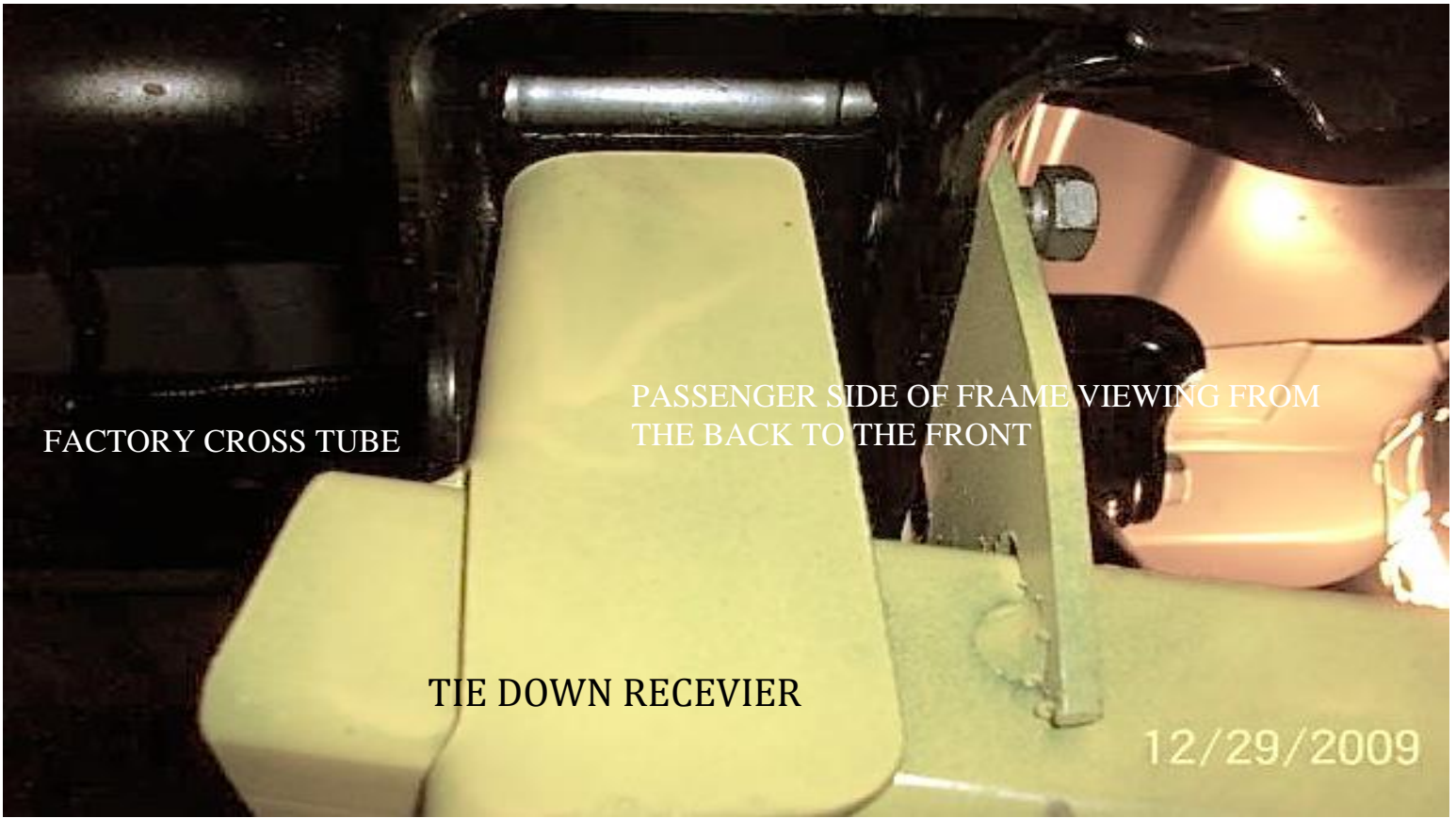


PHOTO 9.2





Step 10-

Line up the holes with the bumper bracket, Tie Down Receiver, and the frame then reinstall the factory fasteners and 1/2" fasteners to 60 ft-lbs(81nm). Tighten the previously loosened bumper bracket bolts to 30ft-lbs(40nm). (Photo 10.1)

PHOTO 10.1



TD FINISHING KIT

Generic tie down picture is used to illustration purposes.

Tie down design may vary.

Step 1

Insert one 1-3/4" x 1-3/4" x 2" foam backing plug into the back of the tie down receiver opening. If the back of the receiver is inaccessible, insert the foam backing plug in the front of the tie down receiver and press it back with the tie down insert. See Photo 1.1

TD FINISHING KIT: Generic Frame Mounted Tie Down picture is used for illustration purposes. The Frame Mounted Tie down design may vary.

Step 1-

Insert one 1-3/4" x 1-3/4" x 2" Foam Backing Plug into the back of the Aluminum Tie Down Receiver opening. If the back of the Aluminum Tie Down Receiver is inaccessible, insert the Foam Backing Plug in the front of the Aluminum Tie Down Receiver and press it back with the Tie Down Insert. See Photo 1.1

Photo 1.1



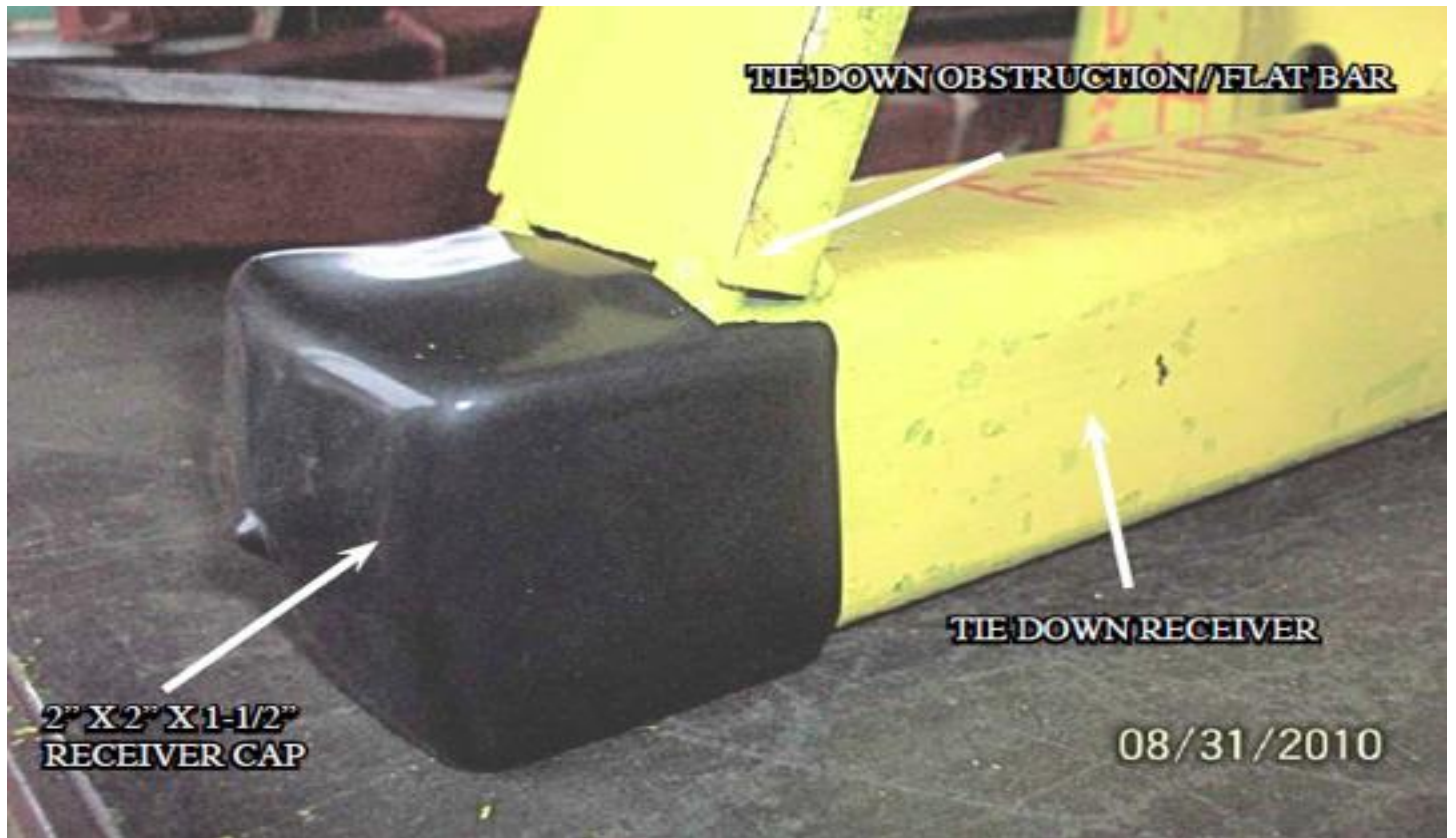
Step 2-

Insert one 2" x 2" x 1-1/2" Receiver Cap over the end of the Aluminum Tie Down Receiver. See Photo 2.1 (if the 2" x 2" x 1-1/2" Receiver Cap does not fit down the receiver, you will need to notch it out using a box knife or similar) **See Photo 2.2**

Photo 2.1



Photo 2.2



Step 3-

Repeat on the other Aluminum Tie Down Receiver.

INSTRUCTIONS FOR MAINTENANCE OF POLISHED STAINLESS STEEL PRODUCTS



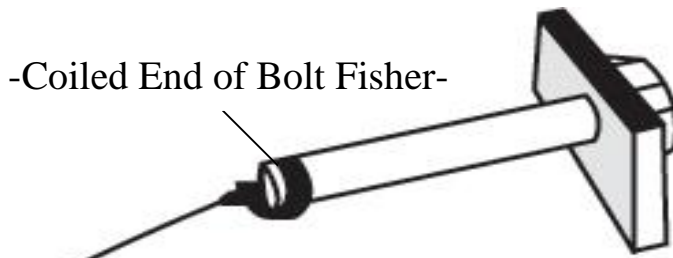
Torklift utilizes quality grade 304 stainless steel in this product.

304 stainless steel is well known for its anti corrosive properties, however in some environments such as coastal regions or when in contact with some road chemicals, corrosion may occur.

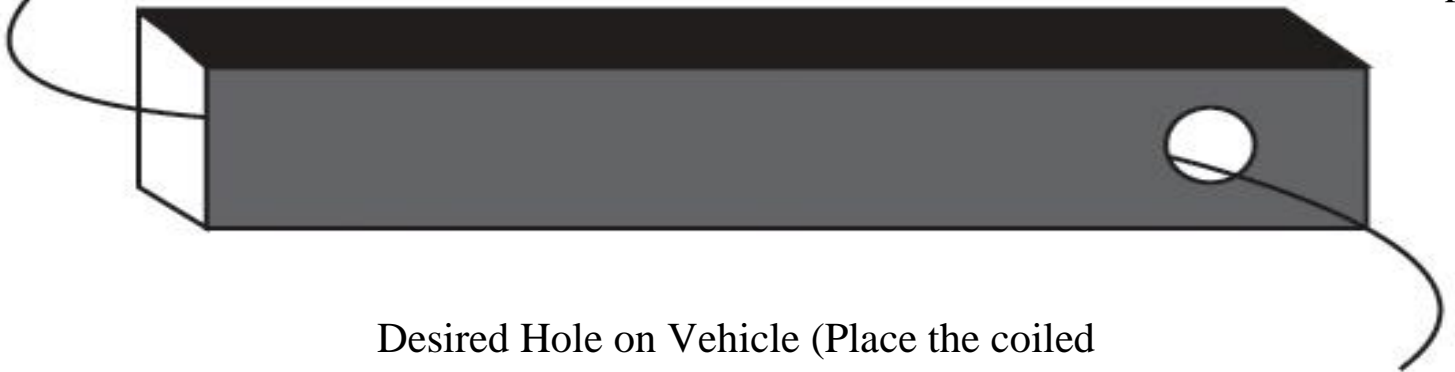
We recommend occasional polishing of our product to maintain its attractive finish. Use an approved stainless steel cleaning/polishing product, which can be purchased from any automotive supplier.

TORKLIFT'S BOLT FISHING GUIDE

Your guide to understanding the installation of our frame mounted tie downs.



Note: The hardware may vary as to what is being fished along with the bolt. In this instance a 1" X 2" plate washer is being fished along with the hex bolt. Different applications may require fishing through various star washers and flat washers for example.



Desired Hole on Vehicle (Place the coiled end of the bolt fisher through this hole).

This side of the Bolt Fisher should come out of a hole where the required hardware (for example 1" X 2" plate washer) can pass through.



This bottom example shows the bolt when it's completely fished through the vehicle. You may find it easier to keep the bolt fisher attached until you get the tie down receiver in place so that the bolt doesn't fall into the vehicle frame.

WARNING: PULLING TOO HARD ON THE BOLT FISHER CAN RESULT IN LOST FASTENERS, OR BROKEN BOLT FISHER.

TIEDOWN INSERT INSTALLATION INSTRUCTIONS

On one end of each of your tie down inserts is a triangular plate referred to by Torklift as a bullet plate. Your tie down inserts should be installed with the shorter side of the bullet plate facing away from each other, i.e.. The shorter side of the front insert should point to the front of the truck and the shorter side of the rear insert should point towards the rear of the truck.

Once installed, attach the TorkLift directional stickers to the face of the bullet plate on the insert as a reminder.

DRIVERS SIDE FRONT



DRIVERS SIDE REAR



IMPORTANT NOTE: *Your tie down inserts are designed to have clearance inside of the receiver. This is to account for road debris, as well as aid in installation and removal. Some rattle may be expected if the inserts are left installed while not under load from the camper.*

RECOMMENDED TRUCK CAMPER

INSTALLATION INSTRUCTIONS

When securing any heavy load (especially a camper) in your truck bed, your front tie down points should pull the load forward as much as possible. Some camper anchor points may differ with different manufacturers, as well as the camper jack mounting locations. Your Torklift tie down inserts has offset triangular brackets to increase the angle of pull. These are designed to be used in the front facing forward, and the rear facing rearward but can be used in either front or rear. These recommendations are to be considered and followed as a basic rule of thumb. Obviously there will be some applications where this may not be possible. At a minimum, if opposite pull of both front and rear tie downs cannot be achieved for whatever reason, you should have at least a forward pull at the front or rear location.

If your camper does not come with Rubber Bumpers on the front lower portion of the camper, installing Rubber Bumpers (Torklift has Rubber Bumpers available Part A7001) or using a block of wood such as a 2 x 4 in the bed, will prevent the camper from damaging the front bulk head of the truck bed.

Minor movement (or settling) can occur in some incidental harsh driving conditions (on or off road). A rubber bed mat is not a requirement to maintain the lifetime warranty on a Torklift system, but a strong recommendation simply as a safety precaution to protect the truck bed, the bottom of the camper and to give the camper additional support.

TORKLIFT DOES NOT RECOMMEND: Installing your truck camper in your truck on top of a drop in plastic bed liner!!! The drop in plastic bed liners can slide on top of the truck bed surface, and the camper can slide on top of the slick surface of the bed liner. The liner can also act as a spring causing a trampoline effect increasing vertical truck camper movement, independent of the vehicle, possibly resulting in truck bed, and camper damage!

INSTRUCTIONS FOR FINISH MAINTENANCE

OF TORKLIFT PRODUCTS

POWDER COATED STEEL:

To keep your Torklift products looking good follow these guidelines. All steel powder coated Torklift products are sandblasted for maximum adhesion and use a high quality industrial urethane based powder coat. Due to the extreme, harsh, undercar environment that your Torklift products live in, (consistently sprayed with corrosive road chemicals such as salt, and road debris), Torklift does not warranty the power coated finish.

To minimize corrosion from these factors on powder coated steel products, Torklift recommends regularly cleaning and inspecting the powder-coated surface and touching up any affected areas with enamel or urethane based aerosol paint product. If there are any areas of surface rust, there are also aerosol spray rust converters available on the market that can be used as a preparation to touch-up paint application. These finish maintenance products are available at any automotive parts supplier.

POLISHED STAINLESS STEEL:

Torklift utilizes quality grade 304 stainless steel in our stainless steel polished products. 304 stainless steel is well known for its anti-corrosive properties. However, in some environments such as coastal regions or when coming in contact with some road chemicals, corrosion may occur.

For a quick clean simply use WD40 and a cloth rag. We also recommend occasional polishing of our polished stainless products to maintain their attractive finish. Use an approved stainless steel chrome or aluminum mag wheel polish cleaning product, which can be purchased from any automotive parts supplier.

Torklift International Limited Lifetime Warranty Information

322 Railroad Ave North, Kent, WA 98032

Torklift will require proof of purchase to register, with pictures of any defective product before issuing a replacement. Torklift will not register any product without proof of purchase, which can be faxed, scanned, emailed, or mailed to the information provided below. Torklift warrants its hitches, custom hitch receivers, frame mounted tie downs, turnbuckles, and accessories (excluding wire harnesses which carry a 90 day warranty) from date of purchase against defects in material and workmanship under normal use and service for the ownership life of the original consumer purchaser. **ALL COMMERCIAL APPLICATIONS ARE WARRANTED FOR A PERIOD OF 90 DAYS FROM THE DATE OF INSTALLATION/SERVICE.** Torklift will replace **FREE OF CHARGE** any part, which proves defective in material or workmanship when presented to Torklift, **TRANSPORTATION CHARGES PREPAID** by purchaser, at the address above. **THIS WARRANTY IS LIMITED TO DEFECTIVE PARTS REPLACEMENT ONLY. LABOR CHARGES AND/OR DAMAGE INCURRED IN INSTALLATION OR REPLACEMENT, AS WELL AS INCIDENTAL AND CONSEQUENTIAL DAMAGES CONNECTED THEREWITH ARE EXCLUDED.** This warranty does not include the finish or paint on our products. Rusting, cracking or peeling of the finish is also excluded. Some states do not allow the exclusion or limitation of incidental or consequential damages, so the above limitation or exclusion may not apply to you. Any damage to Torklift products as a result of misuse, abuse, neglect, accident, improper installation or any use violation of instructions furnished by Torklift or **WHEN USED IN ANY COMMERCIAL APPLICATION WILL VOID THE WARRANTY.** This warranty gives you specific legal rights, and you may also have rights, which vary from state to state. With warranty service, you may be able to go to a small claims court, a state court or a federal district court.



OVER 35 YEARS OF INNOVATION, QUALITY, SAFETY.

322 Railroad Ave North, Kent, WA 98032

Phone (800) 246-8132 Fax (253) 854-8003

or visit our website: www.TorkLift.com

Dear Valued Customer,

Thank you for making TorkLift your choice for truck, camper packages and accessories for your vehicle. By choosing TorkLift products, you have chosen a company that has been serving the RV industry for nearly 40 years and whose name has become synonymous with strength, quality and advanced design and installation.

Please take a few moments of your time to complete the Product Registration Warranty Card on the next page. When registering your newly purchased TorkLift products, you can be assured that your contact information is secure and that you and your product are getting the attention and respect that you deserve.

Thank you again for choosing TorkLift quality products.

**Register for your lifetime warranty and receive a free Torklift
International gift.**

To Fax: Send copies of the questionnaire, warranty card and receipt to
253-854-8003

To E-mail: Send copies of the questionnaire, warranty card and receipt to
warranty@torklift.com

To Mail: Send to Torklift International 322 Railroad Ave North, Kent, WA 98032



TORKLIFT

INTERNATIONAL

OVER 35 YEARS OF INNOVATION, QUALITY, SAFETY.

OFFICIAL WARRANTY REGISTRATION CARD

PLEASE FILL OUT THIS FORM COMPLETELY AND RETURN TO TORKLIFT WITHIN
30 DAYS OF PURCHASE ACCOMPANIED BY A COPY OF YOUR ORIGINAL RECEIPT

TODAY'S DATE: _____

1. PART(S) PURCHASED

PART#: _____ PART#: _____
PART#: _____ PART#: _____

2. PURCHASER INFORMATION

NAME: _____

ADDRESS: _____

CITY: _____ STATE: _____ ZIP / POSTAL CODE: _____

PHONE: (____) _____ - _____ EMAIL: _____

3. TRUCK INFORMATION

YEAR: _____ MAKE: _____

MODEL: _____ BED LENGTH: _____

4. CAMPER INFORMATION

YEAR: _____ MAKE: _____ MODEL: _____

5. DEALER INFORMATION

PURCHASED FROM: _____

ADDRESS: _____

CITY: _____ STATE: _____ ZIP / POSTAL: _____

INSTALLED BY: OWNER ABOVE DEALER ANOTHER DEALER

IF ANOTHER DEALER, WHO: _____