



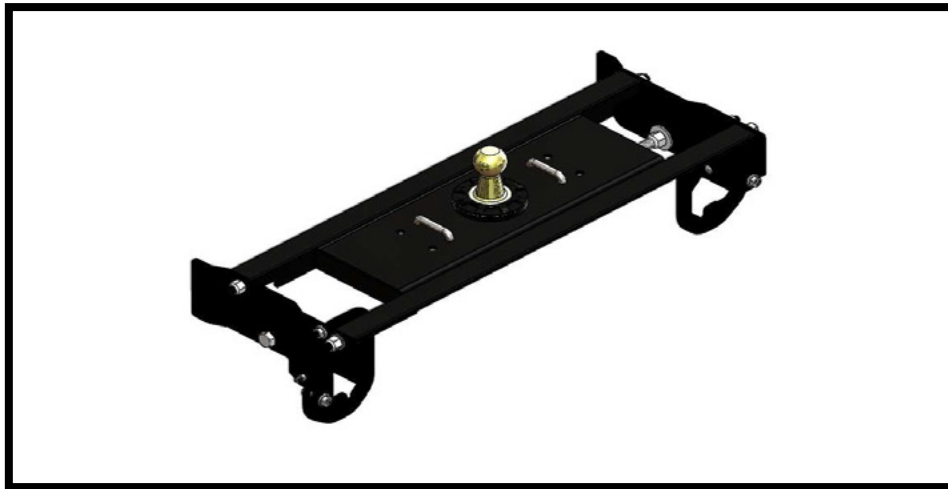
BLUE OX®

DH2202

1999-2010 Ford F-250/F-350/F-450
(Long & Standard Box)
Installation Instructions

Serial Number

Please read these Installation Instructions in their entirety prior to installing or operating this equipment.



This hitch is rated to 30,000 lbs. Gross Towing Weight and 7,500 lbs. Tongue Weight

Bolt Torque Specifications

Torque in Foot-Pounds for Inch Bolts

Bolt Size	Grade 5	Grade 8
1/4"	10	14
5/16"	19	29
3/8"	33	47
7/16"	54	78
1/2"	78	119
5/8"	154	230
3/4"	257	380

Bolt Torque Specifications

Torque in Foot-Pounds for Metric Bolts

Bolt Size	Grade 8.8	Grade 10.9
6MM	6	8
8MM	16	22
10MM	31	40
12MM	54	70
14MM	89	117
16MM	161	230
18MM	222	318



WARNING

Refer to your vehicle's owner's manual for maximum towing capacity. **DO NOT** exceed vehicle, tongue or hitch weight ratings - failure to follow vehicle manufacturer's recommendations could result in damage to your vehicle, personal injury or death.



WARNING

Failure to read and follow these instructions could result in separation of the trailer from the truck, causing property damage, loss of towed vehicle, personal injury or death.

DH2202
2009-2010 Ford F-250/F-350/F-450 (Long & Standard Box)
Installation Instructions

 **WARNINGS**

- Trailer brakes are required.
- Always insure there is sufficient clearance between the hitch ball in the stored position and the vehicle's rear differential. A DH9004 plug is available for use when the ball is not stored in the ball housing.
- Do not use any open flame under the truck bed to cut or weld. There is extreme danger of explosion or fire.
- Vehicle must be securely blocked and brakes set before beginning to work underneath the vehicle.
- Do not clamp hitch over any wiring or brake lines.
- Always make sure trailer is loaded slightly tongue heavy. Do not pull a trailer that is lighter on the tongue end.

Maintenance/Care

- Periodically clean any dirt/debris from the ball and ball housing and moderately lubricate them with white lithium grease or equivalent grease.

Instruction Notes: The exhaust hangers are removed and reinstalled for the hitch installation. Some drilling and trimming is required.

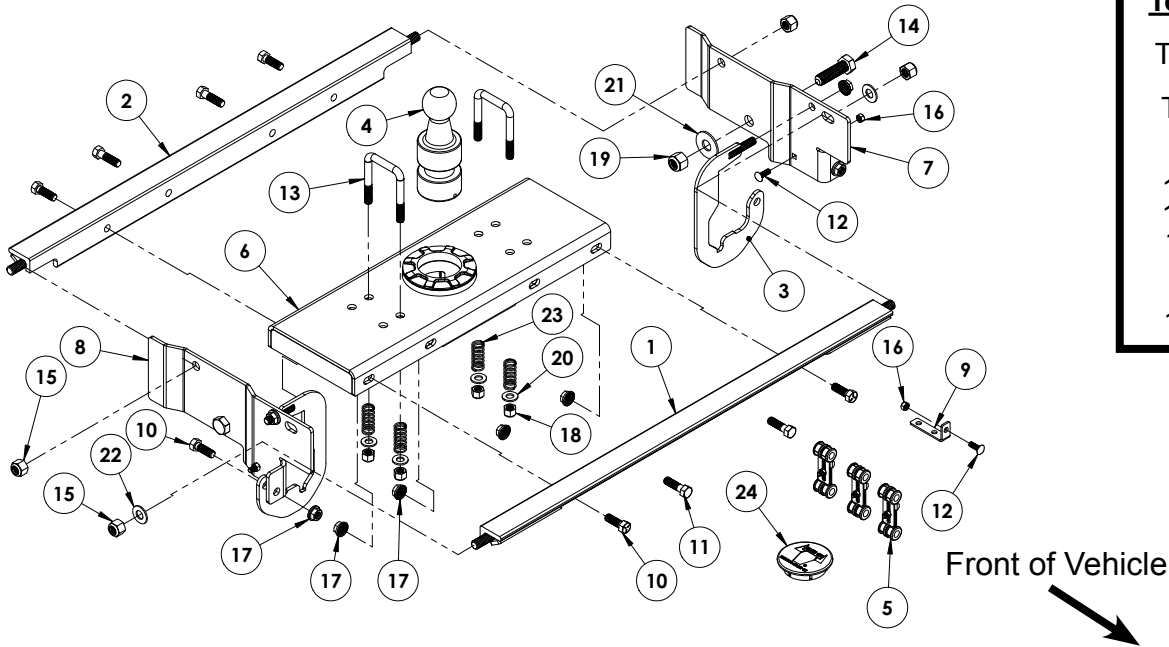
Place all components that are removed on a flat, sturdy surface. All items will be reinstalled unless otherwise noted after the hitch is installed.

The dimensional variations between otherwise identical vehicles can be considerable. While this hitch was designed for easy installation, it may be necessary to modify the hitch slightly to compensate for vehicle manufacturer's tolerances.

NOTICE

- When a bed liner is installed, compensation of the bed liner thickness must be accounted for when measuring the ball location in the box bed.
- When using power drills be aware of the dangers of torque and drill bit length.
- When using a reciprocating saw be aware of objects behind the cutting surface.
- Use a good quality paint to spray cut edges of frame to prevent rusting.
- Be sure to use Loctite® Red on all bolts before tightening. Tighten all bolts according to the torque chart provided.
- The installer must instruct the operator on proper ball installation and locking procedures.
- Dealer or installer be certain the user receives these instruction sheets.
- If the hitch is in an accident, it must be replaced. DO NOT use it again! An accident can cause unseen damage and using it again could result in more damage or serious injury. **DO NOT** use the hitch if it is damaged or missing parts.

DH2202
2009-2010 Ford F-250/F-350/F-450 (Long & Standard Box)
Installation Instructions



- | Tools Required | |
|-----------------------|--|
| Torque Wrench | |
| Drill | |
| Tape Measure | |
| Loctite® RED | |
| 5" Hole Saw | |
| 17/32" Drill Bit | |
| 19/32" Drill Bit | |
| 10MM Socket | |
| 3/4" Socket | |
| 3/4" Wrench | |
| 15/16" Socket | |

Item No.	Part No.	Description	Qty.
1	61-6776	DH2202 Front Cross Member Angle	1
2	61-6777	DH2202 Back Cross Member Angle	1
3	61-7051	Frame Clamp	2
4	62-3822	Hitch Ball	1
5	62-3852	Exhaust Hanger	3
6	62-3995	DH2202 Center Section	1
7	101-7980	DS Support Plate	1
8	101-7981	PS Support Plate	1
9	102-7368	Fuel Line Bracket	1
10	201-0051	1/2"-13 x 1-1/2" Hex Head Bolt, Grade 5, ZP	6
11	201-0068	1/2"-13 x 1-3/4" Hex Head Bolt, Grade 5, ZP	4
12	201-0121	5/16"-18 x 1" Carriage Bolt, Grade 5, ZP	4
13	201-0275	1/2"-13 x 3-3/4" x 2-1/2" U-Bolt, ZP	2
14	201-0535	3/4"-10 x 2-1/2" Hex Head Bolt, Grade 5, ZP	2
15	202-0064	5/8"-11 Hex Nylon Lock Nut, ZP	4
16	202-0070	5/16"-18 Hex Flange Whiz Lock Nut, ZP	4
17	202-0072	1/2"-13 Hex Flange Whiz Lock Nut, ZP	12
18	202-0094	1/2"-13 Hex Nylon Lock Nut, ZP	4
19	202-0107	3/4"-10 Hex Nylon Lock Nut, ZP	2
20	203-0005	1/2" Flat Washer, ZP	4
21	203-0007	3/4" Flat Washer, ZP	2
22	203-0106	5/8" Flat Washer, ZP	2
23	222-0159	Compression Spring (.05" Dia x .85" x 2")	4
24	250-0264	Ball Housing Cover	1
25	101-8593(not shown)	Exhaust Bracket	1
26	201-0509(not shown)	1/4"-20 Carriage Bolt, ZP	1
27	202-0069(not shown)	1/4"-20 Hex Flange Whiz Locking Nut, ZP	1

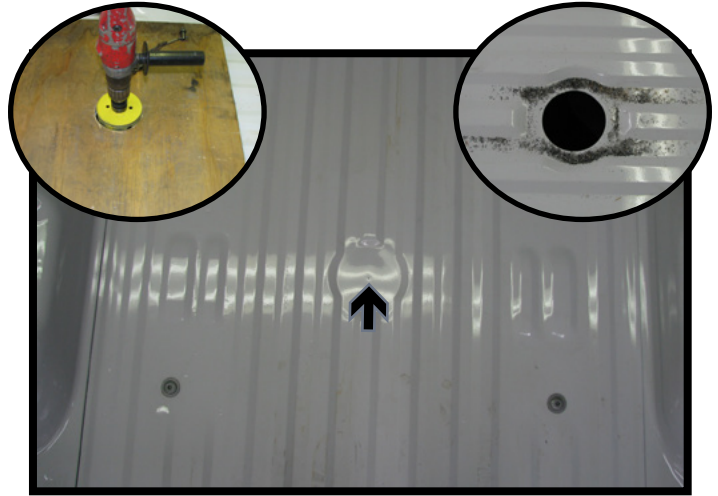
Important:

Use only genuine factory replacement parts on your hitch. Do **NOT** substitute homemade or non-typical parts. If a bolt is lost or in need of replacement, for your safety and the preservation of your hitch, be sure to use a replacement bolt of the same grade (In most cases it will be Grade 5, please reference the parts list above). Replacement parts may be ordered through your nearest Blue Ox® Dealer or Distributor. Failing to follow and/or altering these installation instructions in either installation or required equipment will void the manufacturer's warranty.

DH2202
2009-2010 Ford F-250/F-350/F-450 (Long & Standard Box)
Installation Instructions



1. Using the vehicles jack handle tool, remove the spare tire as per vehicles owners manual.

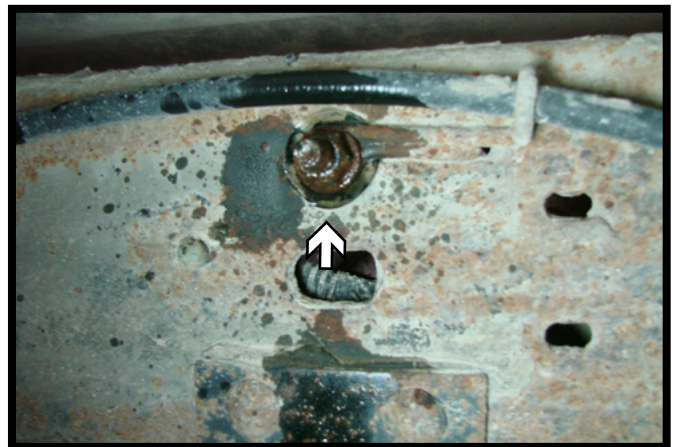


2. Locate the factory center punch located on the flat area between the wheel wells. Using this as a guide, drill a 5" hole thru the bed. If a bed liner is installed measure 46-1/8" from the end of the bed (not the tailgate) and center between the wheel wells.

Note: Using a board while drilling decreases the chances of the bit wobbling out of position.



3. Using a 13MM socket, remove the bolt from the rear exhaust hanger.

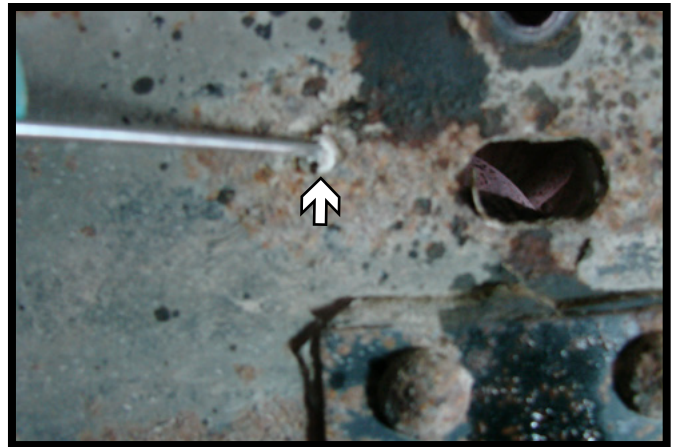


4. Using a 15MM socket, remove the nut from the emergency brake holder.

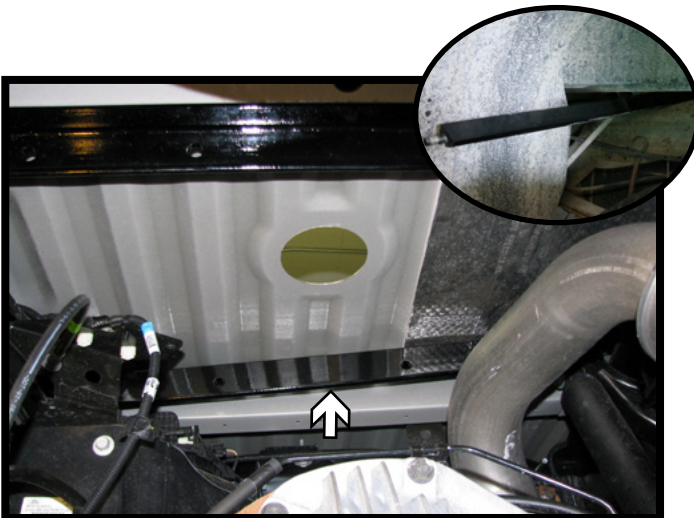
DH2202
2009-2010 Ford F-250/F-350/F-450 (Long & Standard Box)
Installation Instructions



5. If equipped, trim and discard the exhaust heat shield in the area shown.



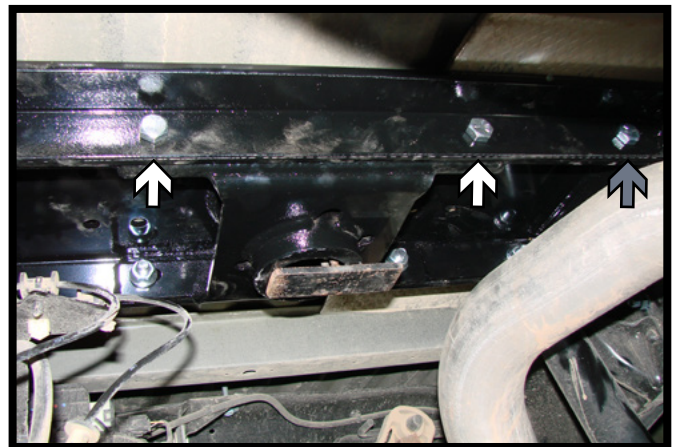
6. Locate the wiring loom clamp secured through the hole in the driver side frame. Trim and push the clamp through the frame.



7. Slide each cross member in on top of the frame on the driver side just in front of the wheel well (inset).

Slide the rear cross member (36-1/2"L) back to the backside of the hole (gray).

Slide the front cross member (37-1/2"L) forward in at an angle until it is in front of the hole (white).



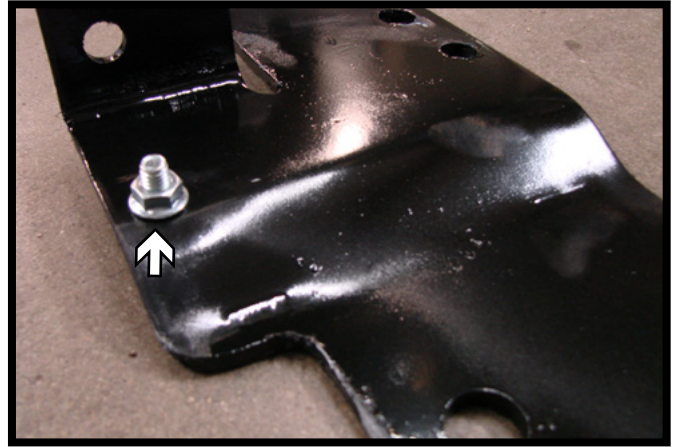
8. Install the center section, aligning it with the 5" hole in the bed.

On both sides of the center section, bolt the cross members to the center section with four (4) outer 1/2"-13 x 1-1/2" bolts with 1/2"-13 whiz nuts on the inside (gray). Install the four (4) inner 1/2"-13 x 1-3/4" bolts with 1/2"-13 whiz nuts on the inside (white). Do not fully tighten hardware.

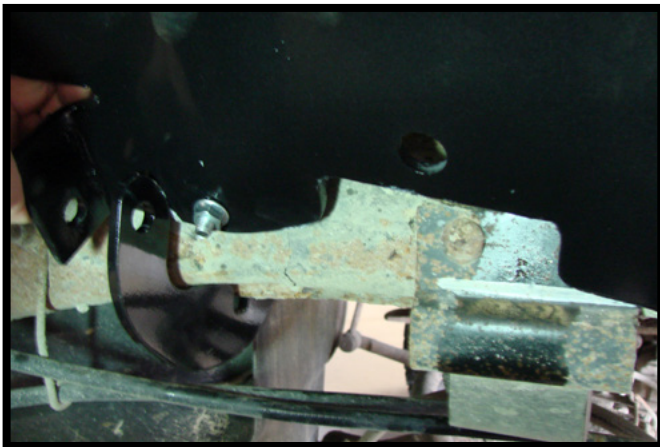
DH2202
2009-2010 Ford F-250/F-350/F-450 (Long & Standard Box)
Installation Instructions



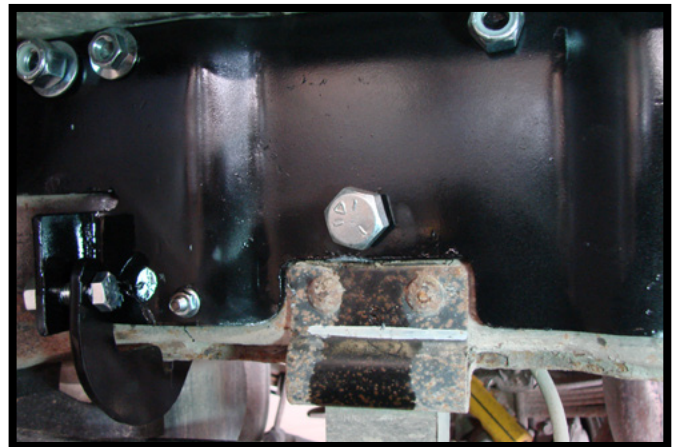
9. Position the J-clamp around the inside of the frame, next to the front cross-member. Do this on both sides of the vehicle.



10. Install the 5/16" carriage bolt thru the square hole in the driver side plate with the nut on the outside.

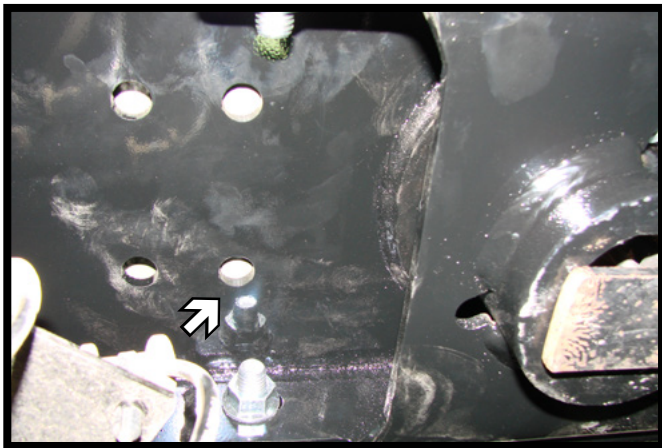


11. Slide the side plate in between the frame and the outer hook of the j-clamp, and position it into the studs of the cross-members and the j-clamp. Do this on both sides of the vehicle.



12. Install the appropriate hardware in the side plate. Do this on both sides of the vehicle. Tighten all hardware, starting with the side plates, and finishing with the center section

DH2202
2009-2010 Ford F-250/F-350/F-450 (Long & Standard Box)
Installation Instructions



13. Using a 19/32" drill bit, drill the two (2) holes closest to the ball thru the bed. Do this on both sides.



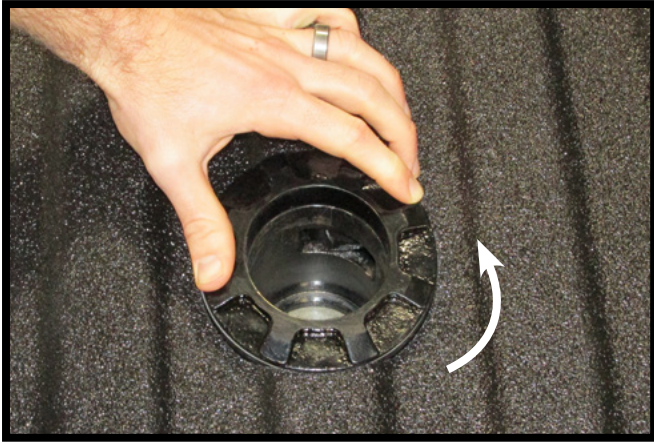
14. Insert the 1/2"-13 u-bolts thru the holes from the topside. Install a 1/2" flat washer, spring, another 1/2" flat washer and 1/2"-13 lock nut onto each u-bolt stud. Tighten until the washers are touching the spring without compressing it.



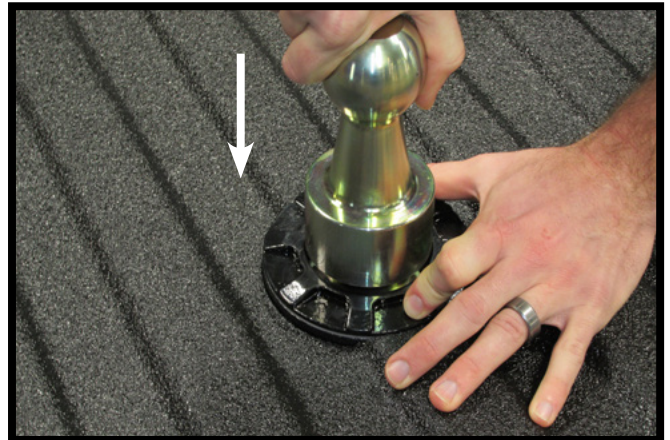
15. Reinstall the factory exhaust bracket. If the exhaust pipe sits too high and interferes with the hitch, cut the rubber hanger off of the exhaust bracket and install the supplied adjustable exhaust hanger. Reinstall the spare tire per the vehicles owners manual.

DH2202
2009-2010 Ford F-250/F-350/F-450 (Long & Standard Box)
Installation Instructions

Installing the Hitch Ball



1. Rotate the locking collar to release the latch pawl.



2. Align the ball with the collar and drop the ball into the hitch. Release the locking collar.

Removing the Hitch Ball



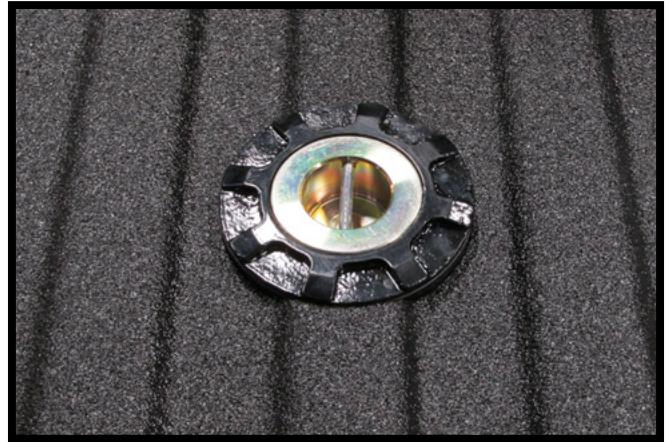
1. Rotate the locking collar to release the latch pawl. Pull straight up on the ball to remove from the hitch.

DH2202
2009-2010 Ford F-250/F-350/F-450 (Long & Standard Box)
Installation Instructions

Storing the Hitch Ball



1. Rotate the locking collar to release the latch pawl. Align the ball with the collar and drop the ball into the hitch.



2. Release the locking collar.

CUSTOMER SERVICE COMMITMENT

Blue Ox® is committed to providing you with exceptional customer care throughout your lifetime with our products. Our team is here to assist you with any questions you may have regarding the performance of your product. Simply call (402) 385-3051 and you can speak with our customer care team.

Additionally, please visit our website to see which rallies our Destination America team will be attending. For a nominal fee, our service technician will service your towing system to ensure it's in proper working condition. Also, as a commitment to our customers, should you visit our factory, you can stay at our full service Blue Ox® campground at no charge along with enjoying a factory tour.

Again, thank you for being our customer and for the confidence you have shown in the performance of our products. It is because of customers like you we enjoy the success we have today.

© 2014 Blue Ox
One Mill Road, Industrial Park
Pender, Nebraska 68047
Phone: (402) 385-3051
Fax: (402) 385-3360
www.blueox.com