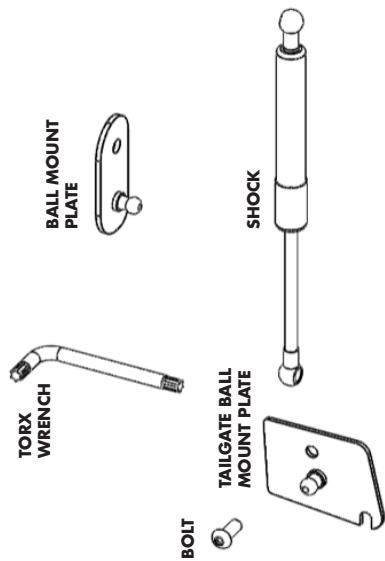


**PARTS INCLUDED**



**PARTS LIST**

- SHOCK 1
- BALL MOUNT PLATE 1
- TORX WRENCH 1
- BUTTON HEAD BOLT 1
- MYLAR SHEET 1
- TAILGATE BALL MOUNT PLATE 1

**TOOLS REQUIRED:**

- T-50 TORX
- M5 ALLEN WRENCH
- 10MM WRENCH

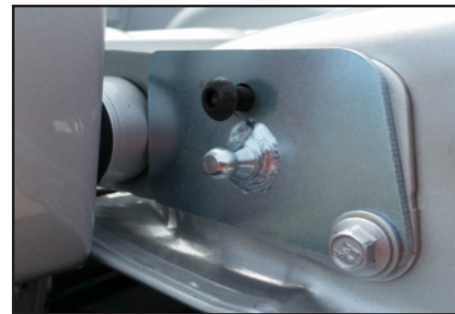
**STEP 4**

The tailgate ball mount plate has an open slot on one side. Slide the plate over the loosened bolt between the tailgate and the washer on the bolt.



**STEP 5**

Thread the button head bolt into the tailgate, through the hole in the tailgate plate. ball mount plate.



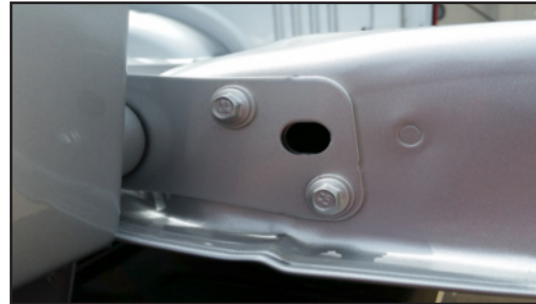
Tighten the button head with an M5 allen wrench and the other bolt with a 10mm wrench.

**STEP 1**

**\* NOTE: THIS PRODUCT CAN ONLY BE INSTALLED ON THE DRIVER'S SIDE.**

On the driver's side locate the two bolts attaching the tailgate near the tailgate pivot point.

**WARNING: Overtightening the nutsert can strip the threads and cause the nutsert to be unusable.**



**STEP 2**

Using a 10mm wrench, remove only the top bolt.



**STEP 3**

Using a 10mm wrench, loosen, but DO NOT remove, the lower bolt.



**STEP 6**

Remove the tailgate cable from the bolt. Use a T50 Torx socket or the wrench provided to remove the cable bolt.



**STEP 7**

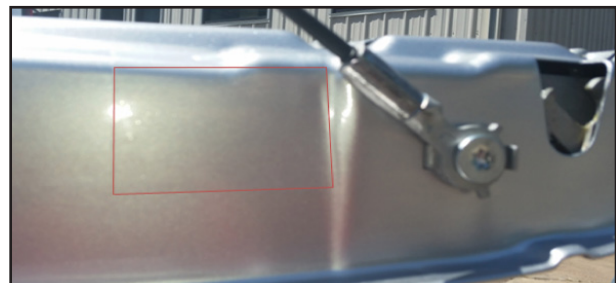
Install the bolt removed from the previous step through the hole in the ball mount plate back into the hole.



Tighten the bolt with the T50.

**STEP 8**

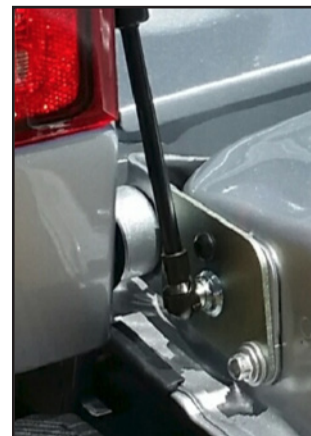
A Mylar sheet has been provided to help prevent components from rubbing against the truck bed and tailgate in the event that any part becomes loose. Using scissors, cut the mylar to the size needed. Apply the mylar to the truck bed and tailgate where tailgate assist components will be in close proximity during opening/closing. The red lines show the area where the mylar has been installed.



The vehicle shown is an example of how the mylar can be installed. Your vehicle may differ from the vehicle shown.

**STEP 10**

Install the narrow end of the shock on the ball mount previously installed.



Install the cable back onto the cable bolt, and the larger part of the shock on the ball mount.



Remove the tailgate cable from the bolt. Use a T50 Torx socket or the wrench provided to remove the cable bolt.

\*Periodically check the upper and lower mounting locations to insure that parts have not loosened through repeated use. If either mounting location is found to be loose, re-tighten the hardware as needed.

## FAQ's

### Can the Tailgate Assist be installed on the passenger's side?

No. The unit will not work on the passenger side of the truck bed. Installing the tailgate assist on the passenger side can cause the tailgate to come off the truck.

### Are there installation videos?

Yes. All installation videos can be viewed at: [www.deezee.com/tailgateassist](http://www.deezee.com/tailgateassist)

## DEE ZEE, INC. WARRANTY COVERAGE

Dee Zee, Inc. guarantees the original purchaser a limited warranty against manufacturer defects in materials, workmanship, and design under normal use.

Tailgate Assist has a 3-year limited warranty. Operational and wear items such hardware have a one-year (1) warranty. To read the complete warranty policy for your product visit: [www.deezee.com/warranty](http://www.deezee.com/warranty)

Buyer assumes all risk, liability, and cost for the installation and use of Dee Zee products. Dee Zee, Inc. assumes no liability for injury, loss, incidental or consequential damages in the event of an accident.

## WARRANTY & RETURN SUBMISSION PROCEDURE

Please contact the original point of purchase for: shipping damage, returns, or warranty claims. Contact Dee Zee directly for missing parts or hardware.

All warranty claims will be initiated at the place of purchase. The original purchaser will be required to present the original sales receipt with purchase date shown and provide photographs of the defect.

## DZ 43204 FORD TAILGATE ASSIST F-150 2015-CURRENT



**INSPECT YOUR PRODUCT FOR DAMAGE & MISSING PARTS BEFORE PROCEEDING TO INSTALLATION**

# 1-800-779-2102

**Mon – Thurs: 8:00am - 5:00pm | Friday: 8:00am - 4:00pm (CST)**

**[WWW.DEEZEE.COM](http://www.deezee.com)**

**REGISTER YOUR PRODUCT ONLINE: [www.deezee.com/registration](http://www.deezee.com/registration)  
VIEW INSTRUCTIONS ONLINE: [www.deezee.com/instructions](http://www.deezee.com/instructions)**

**⚠️ WARNING: Cancer and Reproductive Harm**  
[www.P65Warnings.ca.gov](http://www.P65Warnings.ca.gov)