

Contents

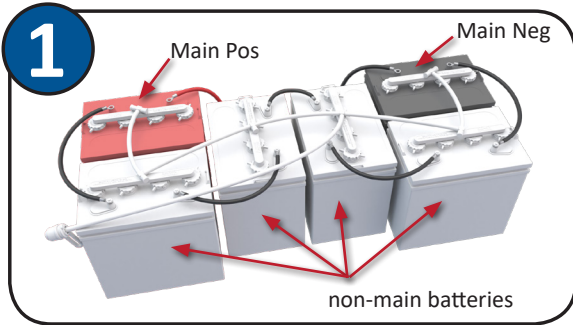
- (1) Deep Cycle Battery Level Sensor
- (1) Mounting Plate
- (1) Instruction Sheet
- (2) Zip Ties

Tools Required

- 1/2" Wrench
- Rubber Gloves
- Safety Glasses
- 1/2" Drill Bit
(For Remote Use)

Specifications

- Max Current Draw: 7mA
- Nominal Operating Voltage: 12 - 48V
- Operating Temperature: 0-180 ° F

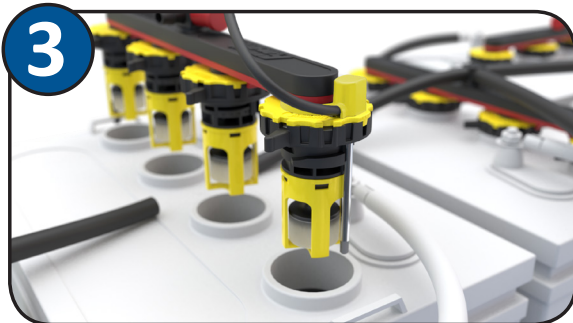


Locate your main batteries (main positive and main negative).

Probe must be installed in a non-main battery.



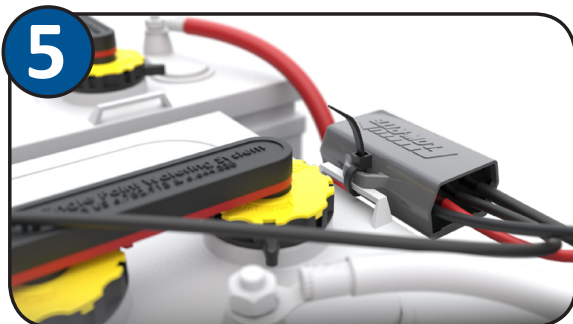
Disconnect your interconnected tubing, unlock and remove the manifold from the battery. Remove one of the **end valves** as shown.



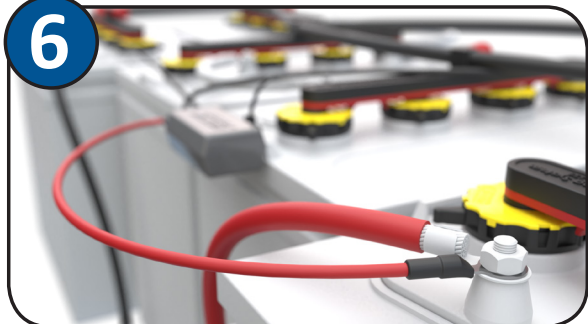
Replace with the sensor valve as shown and place the assembled manifold into the top of the battery. Use care when helping the probe find its way into the cell.



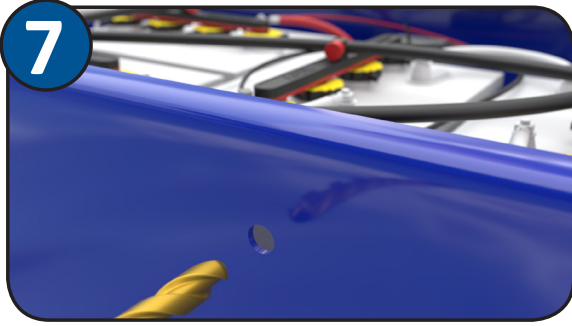
Lock each valve in place and reconnect the tubing.



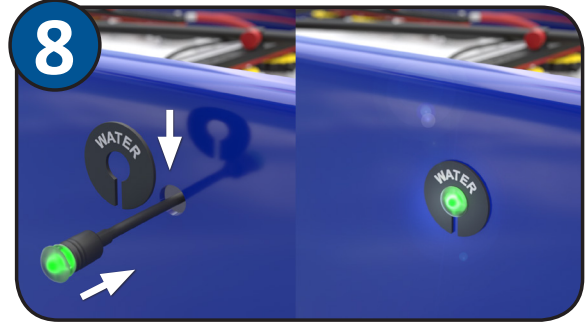
Secure the control box with a zip tie provided in a secure location.



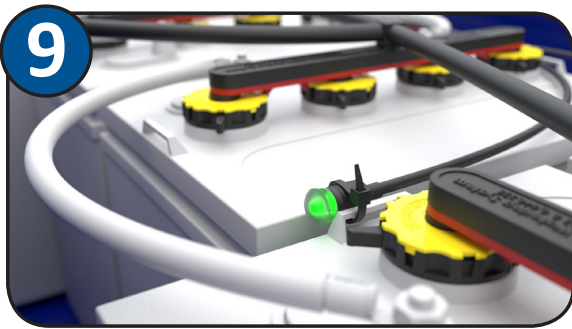
Attach the red wire to the positive terminal of the positive main battery. Connect the black wire to the negative of the negative main battery.



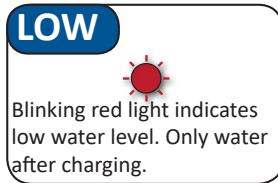
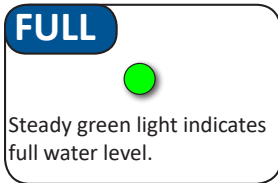
Mounting Option 1: To install the remote indicator first drill a 1/2" hole in the desired mounting location



Feed the light through the hole and through the slot in the mounting plate. Snap the light into the plate, remove the adhesive backing and secure into place.



Mounting Option 2: The remote light may be mounted to a secure location inside the battery compartment.



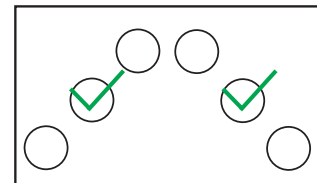
Compatible with Flow-Rite® Pro-Fill™ single-point watering systems.

If your Pro-Fill watering system has a full-black (no red or blue stripe) rigid manifold with 2.3" spacing, you'll need to replace the manifold with our Flex manifold. Flex Manifold BA-127-FLEX
Please contact Flow-Rite for more details.

Not compatible with Trojan® Plus Series batteries.

*When installing on 12 volt batteries, the probe must be installed in the cells highlighted below using our Flex manifold.

*6V Compatible



! WARNING!

Failure to follow these instructions or use of unapproved installation equipment may cause injury and permanent damage to the product or battery. Always use personal protection equipment when working on lead acid batteries. Never work on batteries if they are gassing or on charge.

NOTE:

- *This product is intended to monitor electrolyte levels inside of flooded lead acid batteries. Failure to use this product in the manner intended could compromise safety protection provided by the equipment.*
- *Probe should be wiped clean and terminals checked for corrosion each time the battery has preventative maintenance.*