



I N T E R N A T I O N A L

OVER 35 YEARS OF INNOVATION, QUALITY, SAFETY.



IMPORTANT OWNER-OPERATOR INSTALLATION INSTRUCTIONS

F2011A



REVISED version 13 BY: JL 8/7/15

TECH SUPPORT (800) 246-8132

**AFTER INSTALL, PLEASE GIVE
THIS BOOKLET TO YOUR CUSTOMER**

Warnings

Truck Bed and Camper Protection

Torklift **does not** recommend installing your camper on top of a plastic bed liner (or other compressible material such as foam). These materials can act as a spring, causing increased vertical truck camper movement independent of the vehicle. Plastic bed liners can slide on the truck bed surface, and the truck camper can slide on top of the bed liner. Using a plastic bed liner or similar compressible material will void your warranty and may additionally cause truck bed and/or camper damage.

Minor movement or settling can occur in some incidental harsh driving conditions (on or off-road). A rubber bed mat is recommended to protect the truck bed and camper, but is not a requirement to maintain the Torklift legendary lifetime warranty.

Suspension

To significantly reduce body roll, sag and sway Torklift strongly recommends the StableLoad. Torklift International StableLoads improve safety, handling, and to help level your truck. More information can be found at (www.Torklift.com/stableload).

If your truck is additionally equipped with suspension air bags Torklift cautions against over pressurization as this may lead to unsafe vehicle handling characteristics. We have found that airbags used in conjunction with StableLoads have allowed operators to lower air bag pressure by 50% or more. Only pressurize suspension air bags enough to level the truck.

F2011A PARTS INVENTORY

2 - Aluminum Tie down Receiver	14- 1/2" Flat Washer
2 - Bent Talon Inserts	7 - 1/2" Lock Washer
2 – snapper pins	2 - Talon Insert Stickers
7 - 1/2" Grade 8 Nut	1 - 1/2" Bolt Fisher
2 - 1/2" x 4" Grade 8 Bolt	1 - E Brake Relocation Bracket
2 - 1/2" x 3-3/4" Grade 8 Bolt	2 - 3/8" x 1-1/2" Hex Bolt
3 - 1/2" x 2" Grade 8 Bolt	2 - 3/8" Hex Nut
4 - 5/8" Hook Brackets	2 - 3/8" Lock Washer
2 - 1/2" Star Washers	4 - 3/8" Washer USS
4 - 1" (2.54 cm) x 2" (5 cm) Plate Washers	1 - Driver Side Gusset

TD Finishing Kit: installation on page 15-16

2 - 1-3/4" x 1-3/4" X 2" Foam Backing Plug	2 - 2" x 2" x 1-1/2" Receiver Cap
--	-----------------------------------

INSTALLATION INSTRUCTIONS:

LOCATE AND INVENTORY ALL PARTS TO BECOME FAMILIAR WITH ALL BRACKETS. READ AND UNDERSTAND ALL INSTRUCTIONS. MAKE SURE THE VEHICLE IS IN PARK, ON A LEVEL SURFACE AND WHEELS ARE CHOCKED BEFORE STARTING THE INSTALLATION.

NOTE: 99-07 Trucks will have 1 extra 1/2" x 2" grade 8 bolt. This is due to having a greater span in year fitments.

Step 1-

Begin on the passenger side and look at the frame under the front portion of the bed. You will see a cab mount and a few fasteners that hold the exhaust hanger in place. Note- exhaust hanger bolt location varies depending on year and model. (See Photo 1.1)

Photo 1.1



Step 2-

Take two of the supplied 5/8" Hook Brackets, and put one 1/2" x 4" Grade 8 Bolt and one 1/2" x 3-3/4" Grade 8 Bolt through the pipe that is welded to the units (SEE PHOTO 2.1). Next take one of the 5/8" Hook Brackets that has the 1/2" x 4" Grade 8 Bolt and hook it onto the top of the frame just behind the beds front cross member (SEE PHOTO 2.2). The next 5/8" Hook Bracket will be hooked under the frame, directly under the upper 5/8" Hook Bracket (SEE PHOTOS 2.3 & 2.4).

NOTE:

- * **1999-2007 Truck models use Step 3A**
- * **2008-2011 Truck models use Step 3B**

Photo 2.1



Photo 2.2



Photo 2.3



Photo 2.4



Step 3A-

Take the passenger side Aluminum Tie Down Receiver and place it up against the frame and cab mount, lining it up with the 5/8" Hook Bracket bolts and exhaust hanger bolts (SEE PHOTO 3.1). There will be a hole in the frame just to the left of the cab mount. This hole will be used. Attach one 1/2" x 2" Grade 8 Bolt, one 1/2" Star Washer, and 1" (2.54 cm) x 2" (5 cm) Plate Washers and string it through the frame with the 1/2" Bolt Fisher, next take a 1" (2.54 cm) x 2" (5 cm) Plate Washers, 1/2" Flat Washer, one 1/2" Lock Washer, and one 1/2" Grade 8 Nut and place on the bolt. Hand tighten at this time.



Step 3B-

Take the passenger side Aluminum Tie Down Receiver and place it up against the frame and cab mount, lining it up with the 5/8" Hook Bracket bolts and exhaust hanger bolts (SEE PHOTO 3.1). For 08-09 trucks, the Aluminum Tie Down Receiver has a hole on the side that's bent so that it can be bolted to the cab mount (SEE PHOTO 3.2). Now take one 1/2" x 2" Grade 8 Bolt and two 1/2" Flat Washers and slide it through the cab mount hole and through the Aluminum Tie Down Receiver plate using the 1/2" Bolt Fisher. Next take one 1" (2.54 cm) x 2" (5 cm) Plate Washers, one 1/2" Flat Washer, one 1/2" Lock Washer, and one 1/2" Grade 8 Nut and hand tighten this fastener assembly (SEE PHOTO 3.3).

Photo 3.2

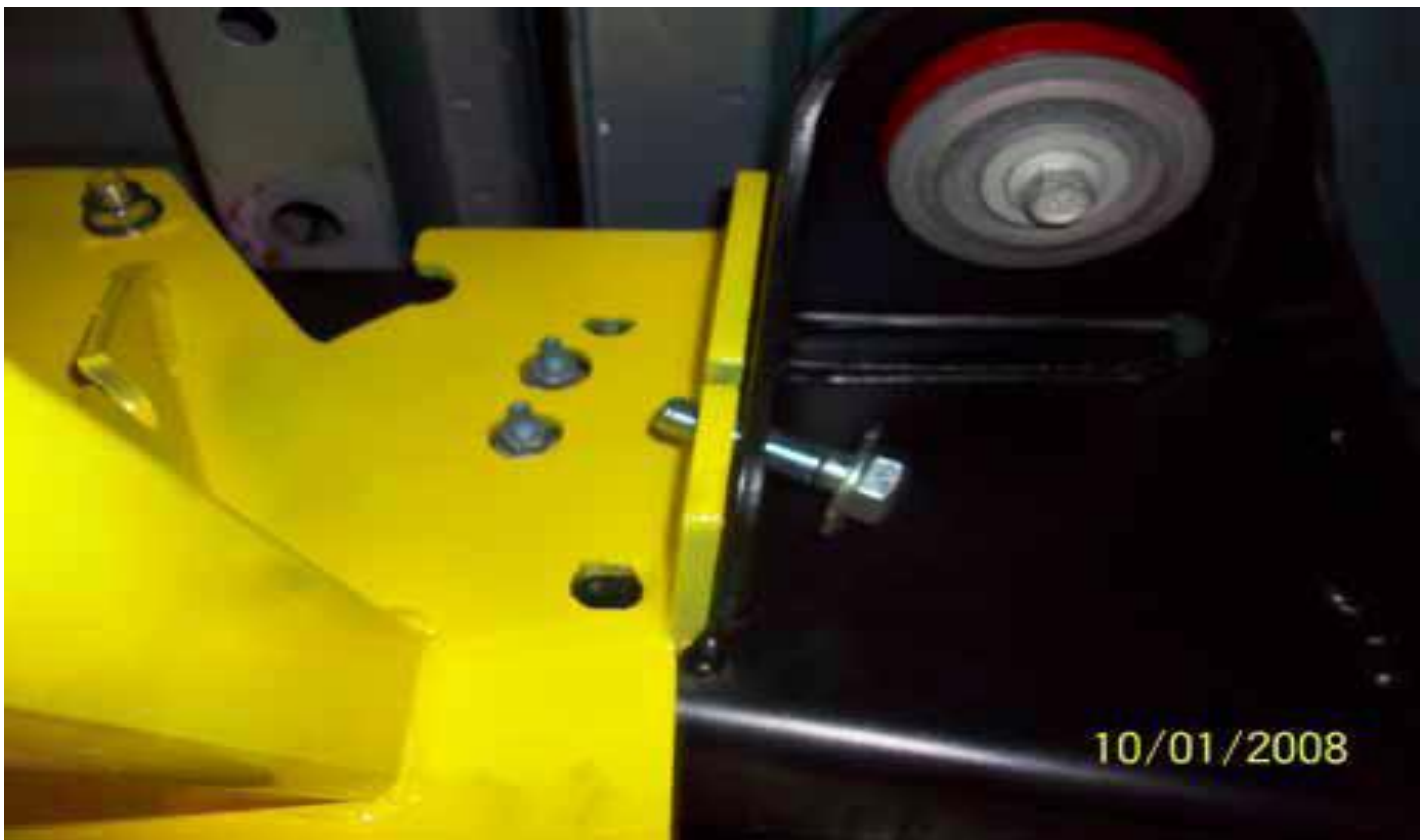


Photo 3.3



Step 4-

Next, take two 1/2" Flat Washers, one 1/2" Lock Washer, and One 1/2" Grade 8 Nut and place them onto each hook Bracket bolt. Tighten to 25 ft-lbs.

Step 5-

On the driver side. Take two 5/8" Hook Brackets and place one 1/2" x 4" Grade 8 Bolt and one 1/2" x 3-3/4" Grade 8 Bolt through the welded pipes (SAME AS PASSENGER SIDE).

Step 6-

In the same location as the passenger side, place the 5/8" Hook Brackets onto the frame with the longer bolt on the top of the frame (You will need pliers or a similar tool to wedge up against the fuel tank in order to aid in sliding the bottom 5/8" Hook Bracket into position). There is a notch in the fuel tank where the 5/8" Hook Bracket will fit into place (SEE PHOTOS 6.1 & 6.2).

Photo 6.1

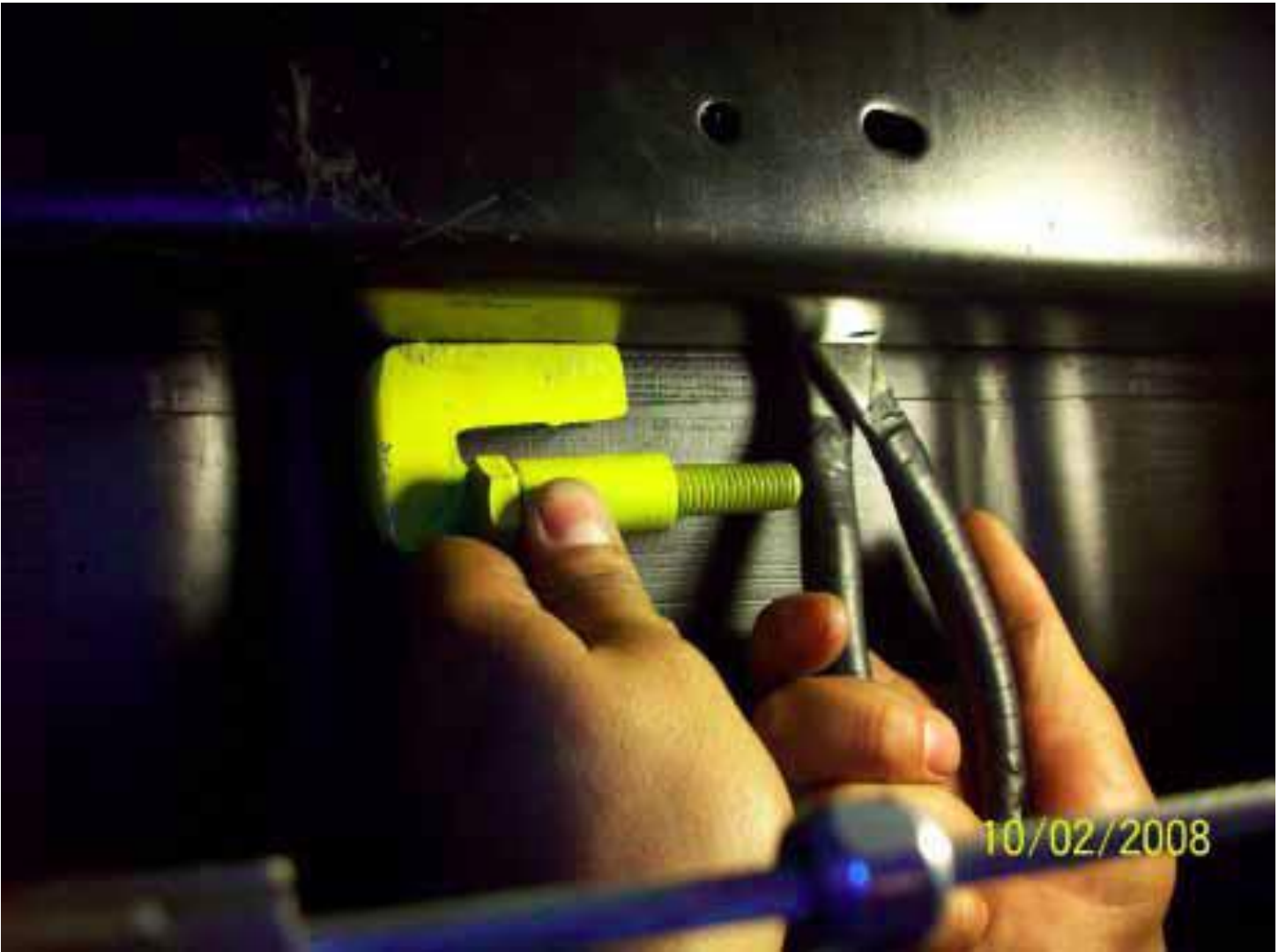
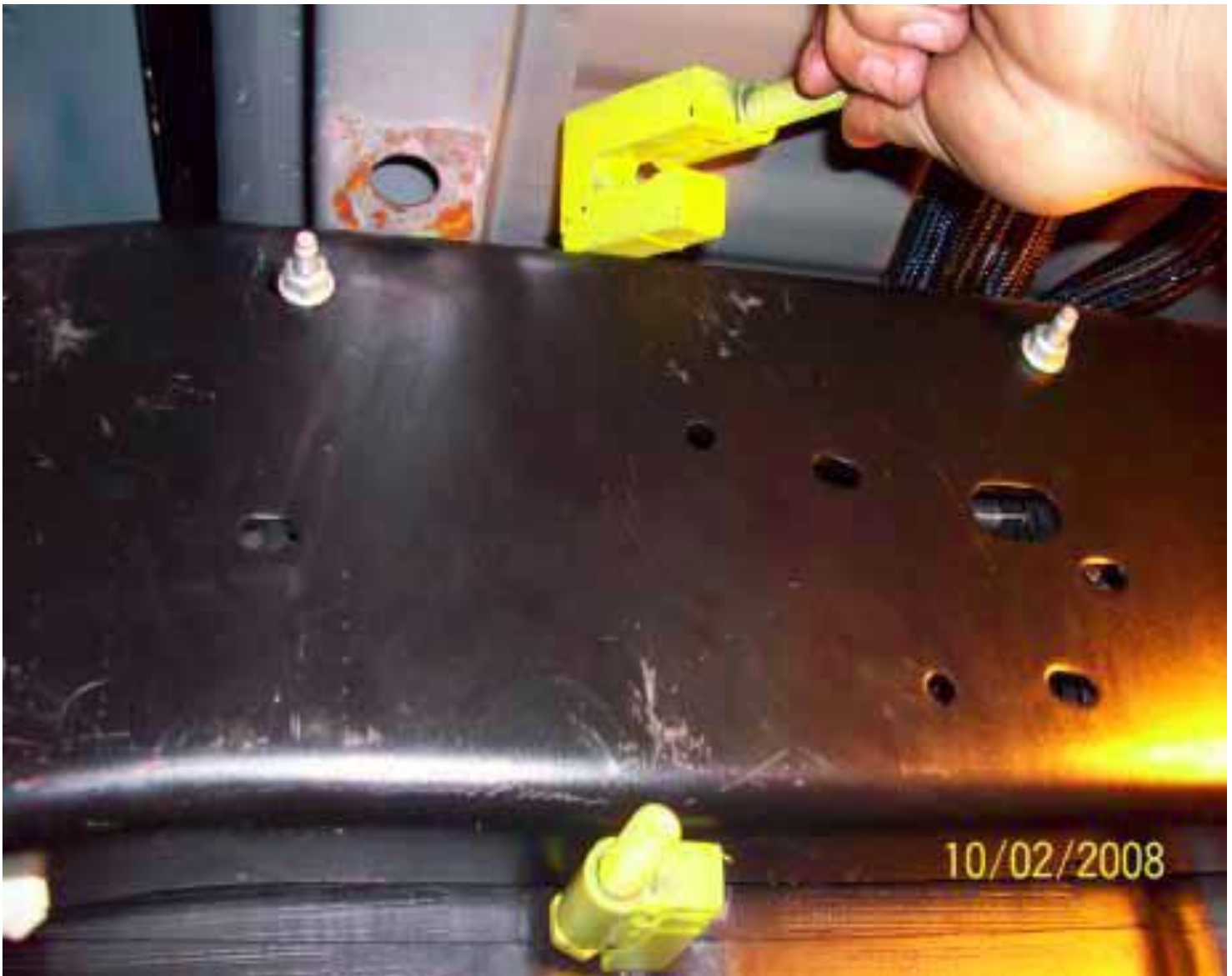


Photo 6.2



Note- Trucks with the E-brake running along the side of the frame, continue to Step 7.

Note- If your application does not have the oval hole to the right of the cab mount, continue to Step 10.

Step 7-

Notice the oval hole next to the cab mount. Take the spiral end of the 1/2" Bolt Fisher and slide it through the hole and up to the top of the frame and back towards you. Attach one 1/2" x 2" Grade 8 Bolt, one 1/2" Star Washer, and 1" (2.54 cm) x 2" (5 cm) Plate Washers onto the 1/2" Bolt Fisher and pull it back out through the oval hole (SEE PICTURES 7.1 & 7.2).

Photo 7.1



Photo 7.2



Step 8-

Put the Aluminum Tie Down Receiver up to the frame and cab mount, you will need to move the E-brake line away from the frame when doing this (SEE PICTURE 8.1). Next, take two 1/2" Flat Washers, one 1/2" Lock Washer, and one 1/2" Grade 8 Nut and place them on each 5/8" Hook Bracket bolt.

Photo 8.1



Step 9-

Take one 1" (2.54 cm) x 2" (5 cm) Plate Washers, one 1/2" Flat Washers, one 1/2" Lock Washer, and one 1/2" Grade 8 Nut and place them on the bolt that was fished through the frame.

Step 10-

For those trucks with the E-brake running on the outside of the frame or do not have the oval hole next to the cab mount the install will be the exact same as the passenger side installation (SEE PICTURE 8.1). Use the E-brake Bracket Relocator to move the line away from the frame.

Step 11-

Disconnect the E-brake line at the junction point in front of the rear spring perch. For ease of installation of the E-brake Bracket Relocator, make sure the E-brake is disengaged (SEE PICTURE 11.1). Slide the E-brake line through one of the holes in the E-brake Bracket Relocator and re-bolt it back into position using one 1/2" x 2" Grade 8 Bolt, one 1/2" Flat Washers, one 1/2" Lock Washer, and one 1/2" Grade 8 Nut (SEE PICTURE 11.2 & 11.3).

Photo 11.1



Photo 11.2

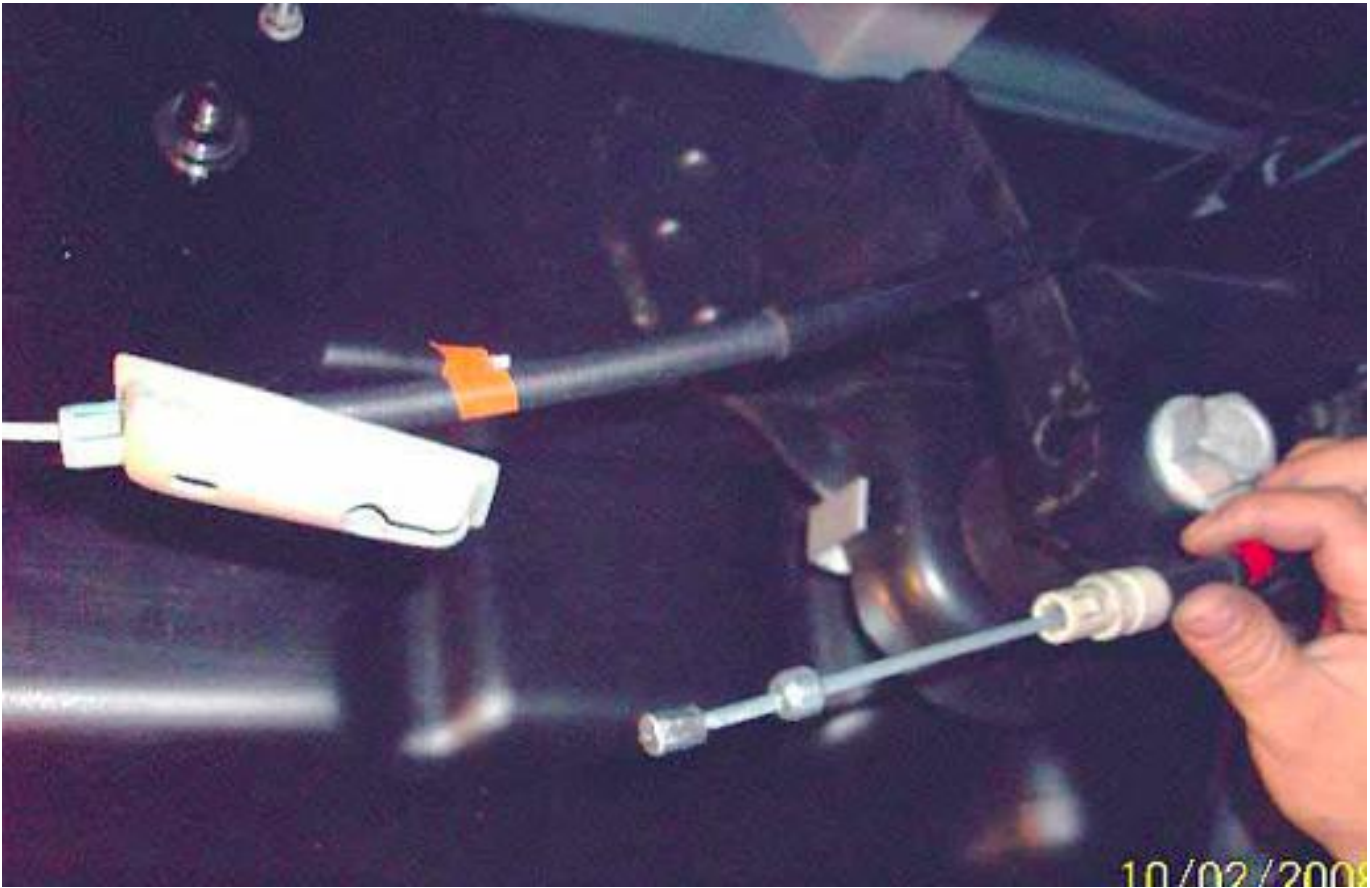
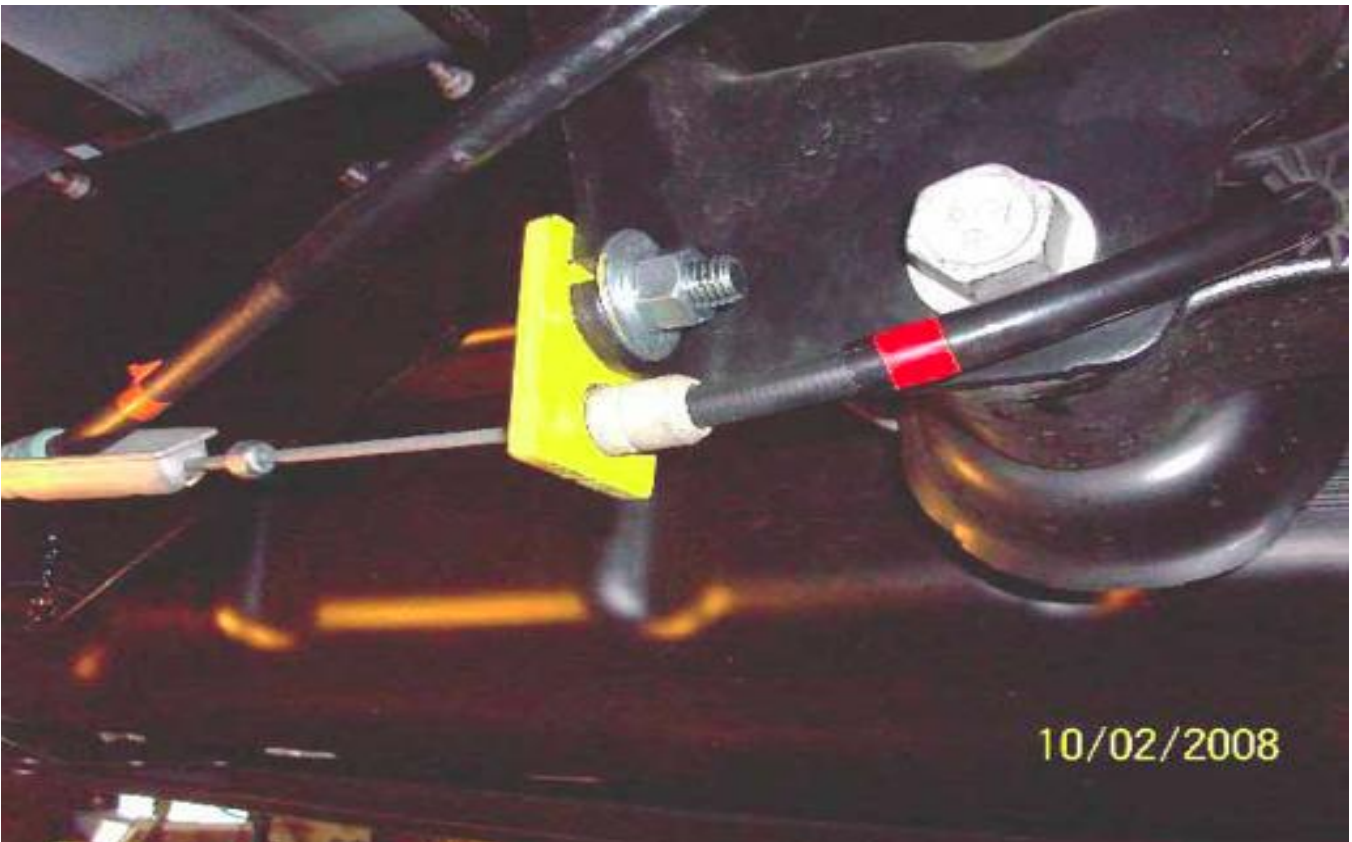


Photo 11.3



Step 12-

Install your Driver Side Gusset with one 3/8" X 1-1/2" Hex Bolt and one 3/8" Washer USS through each hole. Next, fasten both of these bolts down with a 3/8" Washer USS, 3/8" Lock Washer, and a 3/8" Hex Nut (See Photo 12.1).

Photo 12.1



Step 13-

Tighten all 1/2" fasteners down to **25 ft. Lbs (33 Nm)** with a torque wrench.
Tighten all 3/8" fasteners down to **25 ft. Lbs (33 Nm)** with a torque wrench.

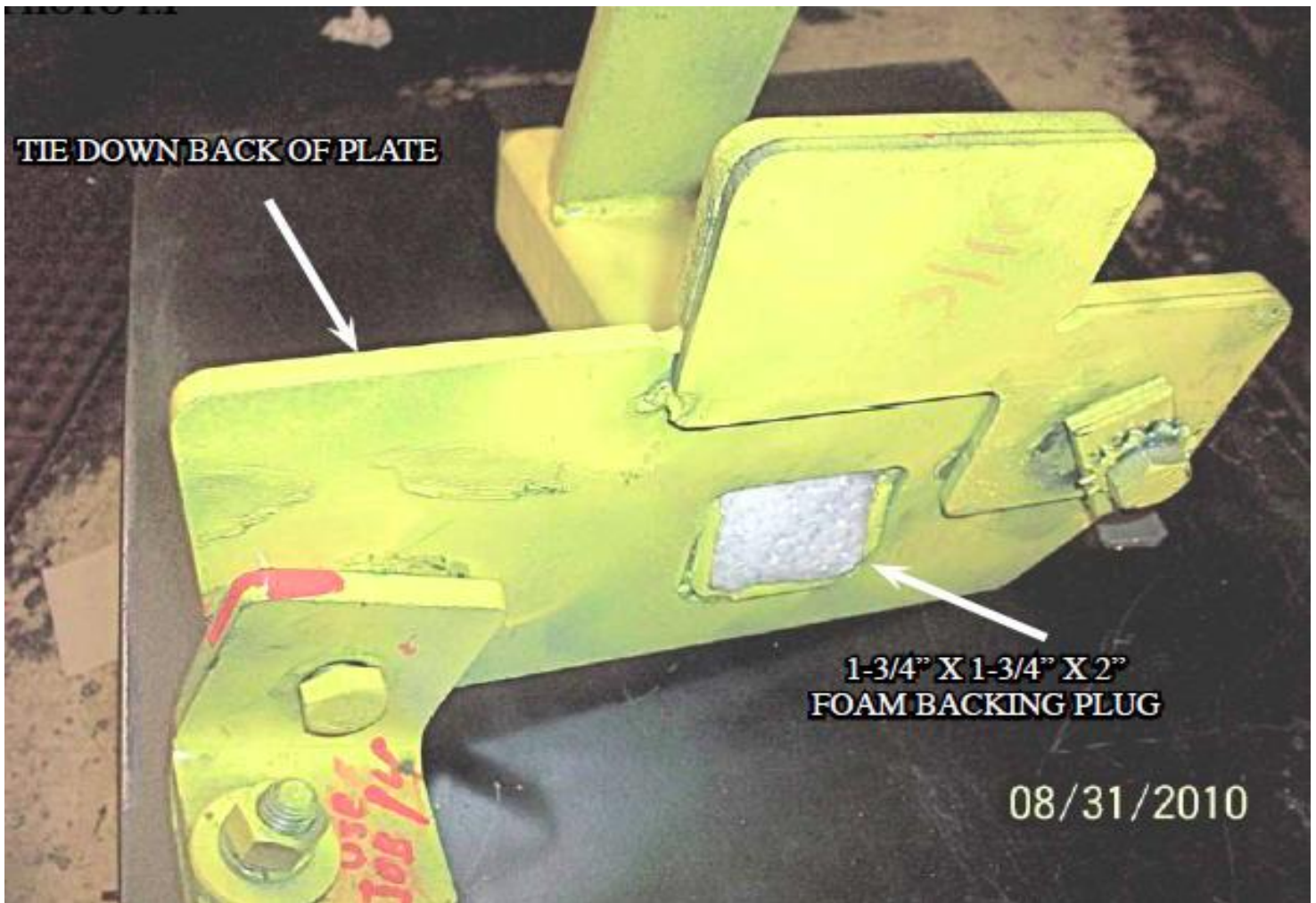
** Factory installed running boards: you may need to install the tie down inserts in reverse. Example / passenger insert will be installed on the drivers side and drivers side on the passengers side of the truck.*

TD FINISHING KIT: Generic Frame Mounted Tie Down picture is used for illustration purposes. The Frame Mounted Tie down design may vary.

Step 1-

Insert one 1-3/4" x 1-3/4" x 2" Foam Backing Plug into the back of the Aluminum Tie Down Receiver opening. If the back of the Aluminum Tie Down Receiver is inaccessible, insert the Foam Backing Plug in the front of the Aluminum Tie Down Receiver and press it back with the Tie Down Insert.

Photo 1.1



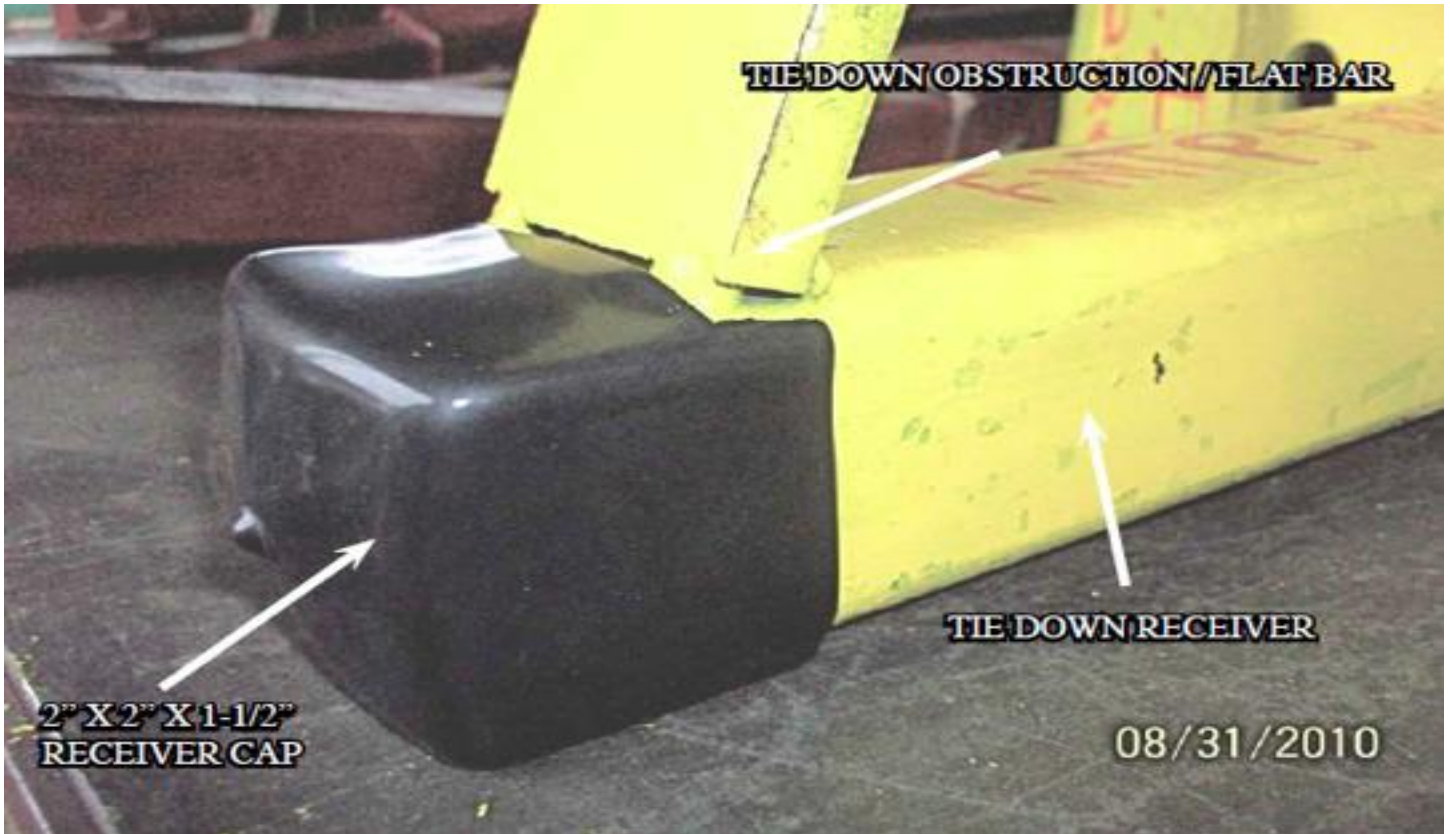
Step 2-

Insert one 2" x 2" x 1-1/2" Receiver Cap over the end of the Aluminum Tie Down Receiver. See Photo 2.1 (if the 2" x 2" x 1-1/2" Receiver Cap does not fit down the receiver, you will need to notch it out using a box knife or similar) See Photo 2.2

Photo 2.1



Photo 2.2



Step 3- Repeat on the other Aluminum Tie Down Receiver.

INSTRUCTIONS FOR MAINTENANCE OF POLISHED STAINLESS STEEL PRODUCTS



Torklift utilizes quality grade 304 stainless steel in this product.

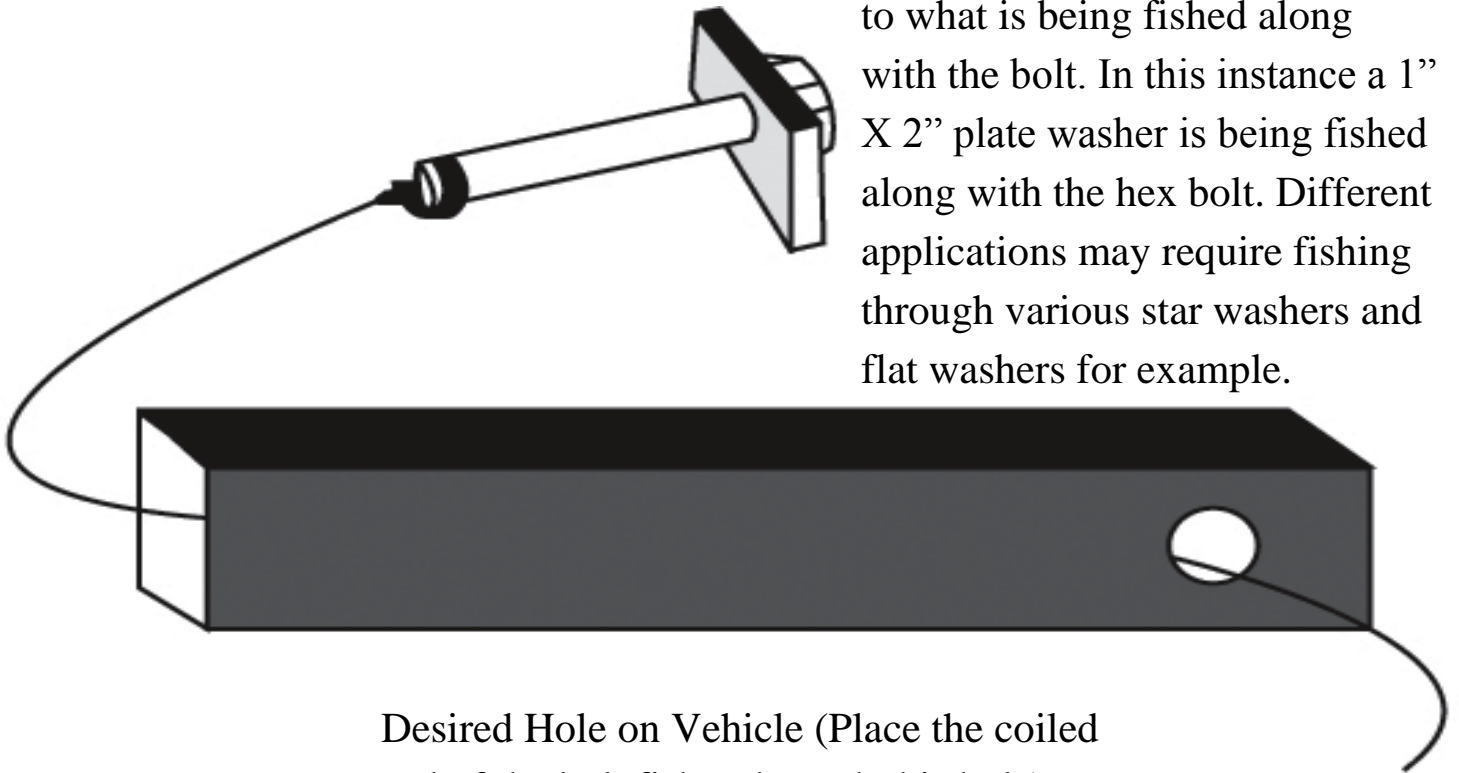
304 stainless steel is well known for its anti corrosive properties, however in some environments such as coastal regions or when in contact with some road chemicals, corrosion may occur.

We recommend occasional polishing of our product to maintain its attractive finish. Use an approved stainless steel cleaning/polishing product, which can be purchased from any automotive supplier.

TORKLIFT'S BOLT FISHING GUIDE

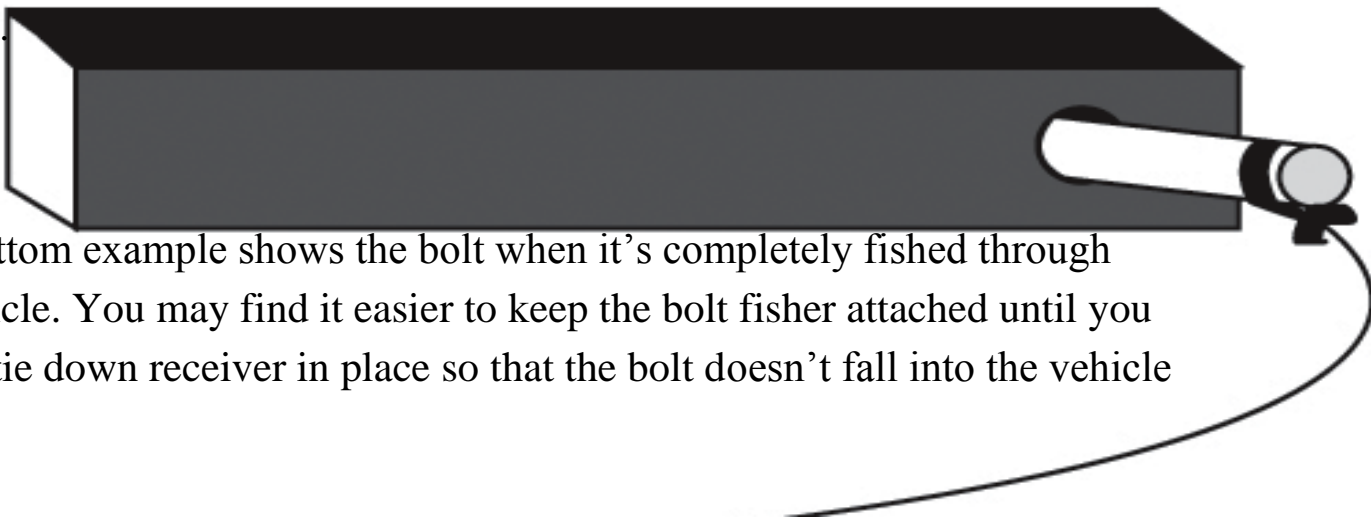
Your guide to understanding the installation of our frame mounted tie downs.

Note: The hardware may vary as to what is being fished along with the bolt. In this instance a 1" X 2" plate washer is being fished along with the hex bolt. Different applications may require fishing through various star washers and flat washers for example.



Desired Hole on Vehicle (Place the coiled end of the bolt fisher through this hole).

This side of the Bolt Fisher should come out of a hole where the required hardware (for example 1" X 2" plate washer) can pass through.



This bottom example shows the bolt when it's completely fished through the vehicle. You may find it easier to keep the bolt fisher attached until you get the tie down receiver in place so that the bolt doesn't fall into the vehicle frame.

WARNING: PULLING TOO HARD ON THE BOLT FISHER CAN RESULT IN LOST FASTENERS, OR BROKEN BOLT FISHER.

TIEDOWN INSERT INSTALLATION INSTRUCTIONS

On one end of each of your tie down inserts is a triangular plate referred to by Torklift as a bullet plate. Your tie down inserts should be installed with the shorter side of the bullet plate facing away from each other, i.e.. The shorter side of the front insert should point to the front of the truck and the shorter side of the rear insert should point towards the rear of the truck.

Once installed, attach the TorkLift directional stickers to the face of the bullet plate on the insert as a reminder.

***DRIVERS SIDE FRONT
REAR***

DRIVERS SIDE



IMPORTANT NOTE: *Your tie down inserts are designed to have clearance inside of the receiver. This is to account for road debris, as well as aid in installation and removal. Some rattle may be expected if the inserts are left installed while not under load from the camper.*

INSTRUCTIONS FOR FINISH MAINTENANCE OF TORKLIFT PRODUCTS

POWDER COATED STEEL:

To keep your Torklift products looking good follow these guidelines. All steel powder coated Torklift products are sandblasted for maximum adhesion and use a high quality industrial urethane based powder coat. Due to the extreme, harsh, undercar environment that your Torklift products live in, (consistently sprayed with corrosive road chemicals such as salt, and road debris), Torklift does not warranty the power coated finish.

To minimize corrosion from these factors on powder coated steel products, Torklift recommends regularly cleaning and inspecting the powder-coated surface and touching up any affected areas with enamel or urethane based aerosol paint product. If there are any areas of surface rust, there are also aerosol spray rust converters available on the market that can be used as a preparation to touch-up paint application. These finish maintenance products are available at any automotive parts supplier.

POLISHED STAINLESS STEEL:

Torklift utilizes quality grade 304 stainless steel in our stainless steel polished products. 304 stainless steel is well known for its anti-corrosive properties. However, in some environments such as coastal regions or when coming in contact with some road chemicals, corrosion may occur.

For a quick clean simply use WD40 and a cloth rag. We also recommend occasional polishing of our polished stainless products to maintain their attractive finish. Use an approved stainless steel chrome or aluminum mag wheel polish cleaning product, which can be purchased from any automotive parts supplier.

Torklift International Limited

Lifetime Warranty Information

322 Railroad Ave North, Kent, WA 98032

Torklift will require proof of purchase to register, with pictures of any defective product before issuing a replacement. Torklift will not register any product without proof of purchase, which can be faxed, scanned, emailed, or mailed to the information provided below. Torklift warrants its hitches, custom hitch receivers, frame mounted tie downs, turnbuckles, and accessories (excluding wire harnesses which carry a 90 day warranty) from date of purchase against defects in material and workmanship under normal use and service for the ownership life of the original consumer purchaser. **ALL COMMERCIAL APPLICATIONS ARE WARRANTED FOR A PERIOD OF 90 DAYS FROM THE DATE OF INSTALLATION/SERVICE.** Torklift will replace **FREE OF CHARGE** any part, which proves defective in material or workmanship when presented to Torklift, **TRANSPORTATION CHARGES PREPAID** by purchaser, at the address above. **THIS WARRANTY IS LIMITED TO DEFECTIVE PARTS REPLACEMENT ONLY. LABOR CHARGES AND/OR DAMAGE INCURRED IN INSTALLATION OR REPLACEMENT, AS WELL AS INCIDENTAL AND CONSEQUENTIAL DAMAGES CONNECTED THEREWITH ARE EXCLUDED.** This warranty does not include the finish or paint on our products. Rusting, cracking or peeling of the finish is also excluded. Some states do not allow the exclusion or limitation of incidental or consequential damages, so the above limitation or exclusion may not apply to you. Any damage to Torklift products as a result of misuse, abuse, neglect, accident, improper installation or any use violation of instructions furnished by Torklift or **WHEN USED IN ANY COMMERCIAL APPLICATION WILL VOID THE WARRANTY.** This warranty gives you specific legal rights, and you may also have rights, which vary from state to state. With warranty service, you may be able to go to a small claims court, a state court or a federal district court.



OVER 35 YEARS OF INNOVATION, QUALITY, SAFETY.

322 Railroad Ave North, Kent, WA 98032

Phone (800) 246-8132 Fax (253) 854-8003

or visit our website: www.TorkLift.com

Dear Valued Customer,

Thank you for making TorkLift your choice for truck, camper packages and accessories for your vehicle. By choosing TorkLift products, you have chosen a company that has been serving the RV industry for nearly 40 years and whose name has become synonymous with strength, quality and advanced design and installation.

Please take a few moments of your time to complete the Product Registration Warranty Card on the next page. When registering your newly purchased TorkLift products, you can be assured that your contact information is secure and that you and your product are getting the attention and respect that you deserve.

Thank you again for choosing TorkLift quality products.

Register for your lifetime warranty and receive a free Torklift International gift.

To Fax: Send copies of the questionnaire, warranty card and receipt to
253-854-8003

To E-mail: Send copies of the questionnaire, warranty card and receipt to
warranty@torklift.com

To Mail: Send to Torklift International **322 Railroad Ave North, Kent, WA 98032**



OVER 35 YEARS OF INNOVATION, QUALITY, SAFETY.

OFFICIAL WARRANTY REGISTRATION CARD

PLEASE FILL OUT THIS FORM COMPLETELY AND RETURN TO TORKLIFT WITHIN 30 DAYS OF PURCHASE ACCOMPANIED BY A COPY OF YOUR ORIGINAL RECEIPT

TODAY'S DATE: _____

1. PART(S) PURCHASED

PART#: _____ PART#: _____
PART#: _____ PART#: _____

2. PURCHASER INFORMATION

NAME: _____

ADDRESS: _____

CITY: _____ STATE: _____ ZIP / POSTAL CODE: _____

PHONE: (_____) _____ - _____ EMAIL: _____

3. TRUCK INFORMATION

YEAR: _____ MAKE: _____

MODEL: _____ BED LENGTH: _____

4. CAMPER INFORMATION

YEAR: _____ MAKE: _____ MODEL: _____

5. DEALER INFORMATION

PURCHASED FROM: _____

ADDRESS: _____

CITY: _____ STATE: _____ ZIP / POSTAL: _____

INSTALLED BY: OWNER ABOVE DEALER ANOTHER DEALER

IF ANOTHER DEALER, WHO: _____