

# AC + DUAL USB WALL PLATE COVER

User's Guide for Model IAWP28-2115-01



## Introduction

Thank you for purchasing this product! This AC + Dual USB Wall Plate Cover is the easiest way to add USB fast-charging capability to 15 Amp standard Duplex electrical outlets in a home or office.

The AC + Dual USB Wall Plate Cover connects to a 15 Amp standard Duplex outlet and provides 2 USB charging ports without using an electrical outlet. The total output for the USB ports is 3.1A. If you are using one USB port, it will provide 2.1A, the other will provide 1A.

Please follow these directions carefully to safely install this product.

### ⚠ Caution

It is critical to confirm that power has been shut off from the fuse panel or circuit breaker box to the designated outlet before starting the replacement. Test the outlet with a voltage meter prior to the installation of the wall plate to ensure that power has been disconnected.

You will need a flat head screwdriver for this installation.

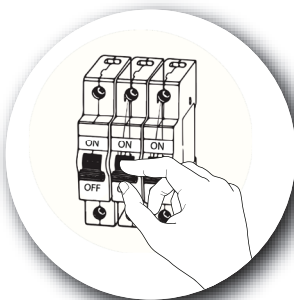
## Installation

Installing this AC + Dual USB Wall Plate Cover takes 3 simple steps:

### Step 1: Turn Off The Power

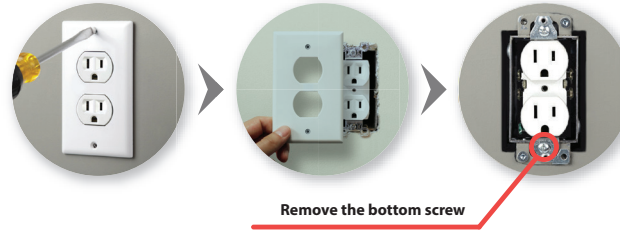
- Locate the electrical cut off point (breaker panel, fuse panel, etc.) of the designated outlet. Turn off the breaker switch or remove the fuse.
- Hint: It may help to plug in a light or similar device to the outlet and turn it on. When you have found the correct breaker or fuse, the light will go out. Additionally, test the outlet with a voltage meter capable of making the proper readings prior to the installation of the wall plate to ensure power has been disconnected.

⚠ Do not remove the outlet's wall plate until you are certain that the outlet is not live. Exposed, live 12-volt AC devices such as wall outlets and light switches can cause severe injury, even death.



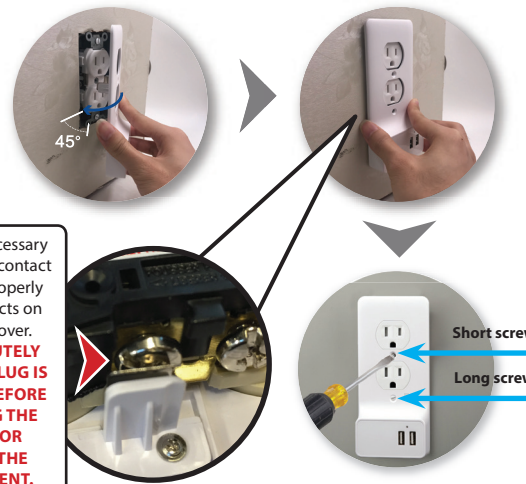
### Step 2: Remove the Existing Face Cover

- Using a flat head screwdriver, remove the existing wall plate. Turn the screwdriver counter-clockwise to remove the screw. After removing the old wall plate and you will see that the outlet is mounted in the electrical box in the wall. Remove the bottom screw of the outlet.



### Step 3: Install AC + Dual USB Wall Plate Cover

- Line up the two large outlet holes of the AC + Dual USB Wall Plate Cover over the two raised sockets of the exposed outlet and place the AC + Dual USB Wall Plate Cover over the outlet. Ensure the two metal contacts on the back of the AC + Dual USB Wall Plate Cover are aligned with the metal contacts on the sides of the electrical outlet. Install the short white screw provided with the wall plate in the center hole, to attach the wall plate to the outlet. Now, install the long white screw through the lower hole in the AC + Dual USB Wall Plate Cover. Turn the screwdriver clockwise to tighten the lower screw, which will pull the wall plate firmly against the wall.



It may be necessary to adjust the contact screws to properly fit the contacts on the plate cover.  
**BE ABSOLUTELY SURE THE PLUG IS NOT LIVE BEFORE TOUCHING THE SOCKET OR MAKING THE ADJUSTMENT.**

- After confirming that the installation is correct, switch the fuse or breaker switch back on to restore power to the outlet.
- Congratulations! You've finished the installation and may begin using the outlet to charge devices with the USB ports.

## Cleaning

- Clean the charger with a soft, dry cloth.
- If mild detergents are needed to clean tougher spots, shut off the outlet from the fuse panel or circuit breaker box and make sure that no moisture gets inside the USB ports or outlet on the front of the unit.



### ⚠ FCC Warning

Changes or modifications to this unit not expressly approved by the party responsible for compliance could void the user's authority to operate the equipment.

NOTE: This equipment has been tested and found to comply with the limits for a Class B digital device, pursuant to Part 15 of the FCC Rules. These limits are designed to provide reasonable protection against harmful interference in a residential installation. This equipment generates, uses, and can radiate radio frequency energy and, if not installed and used in accordance with the instructions, may cause harmful interference to radio communications. However, there is no guarantee that interference will not occur in a particular installation. If this equipment does cause harmful interference to radio or television reception, which can be determined by turning the equipment off and on, the user is encouraged to try to correct the interference by one or more of the following measures:

- Reorient or relocate the receiving antenna.
- Increase the separation between the equipment and receiver.
- Connect the equipment into an outlet on a circuit different from that to which the receiver is connected.
- Consult the dealer or an experienced radio/TV technician for help.

## Safety Warnings

- **WARNING:** To prevent fire or shock hazards, do not expose this unit to rain or moisture.



**WARNING:** This product can expose you to chemicals including lead, which is known to the State of California to cause cancer and birth defects or other reproductive harm. For more information go to [www.P65Warnings.ca.gov](http://www.P65Warnings.ca.gov). **This product meets and complies with all Federal regulations.**

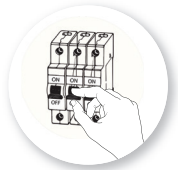
# AC + DUAL USB WALL PLATE COVER

User's Guide for Model IAWP28-2115-01



## Correct Installation Steps

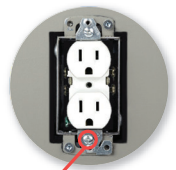
Turn off the fuse or breaker



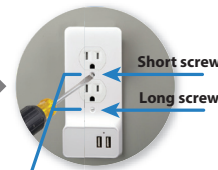
Remove existing faceplate



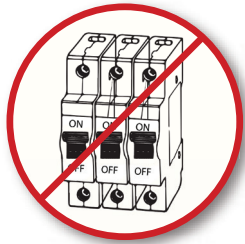
Remove the bottom screw



Install new faceplate and tighten



## Incorrect Installation Steps



Forget to turn off fuse or breaker.



Remove the power socket from the electrical box.



Remove the old faceplate directly with your hands.



Install in the incorrect orientation.



Directly place two hands in the electrical box when installing.

## The Following Receptacles Are Not Compatible



GFCI



Incorrect orientation



Two duplex receptacles



Built-in USB Ports

## Customer Support

Customer Service: 1-888-999-4215

Email Support: [prodinfo@dpiinc.com](mailto:prodinfo@dpiinc.com)

Email Parts: [partsinfo@dpiinc.com](mailto:partsinfo@dpiinc.com)

For Warranty Information and the most up-to-date version of this User's Guide, go to [www.iLiveElectronics.com](http://www.iLiveElectronics.com)

To download this User's Guide in English, Spanish, or French, or to get answers to frequently asked questions, visit the support section at: [www.iLiveElectronics.com](http://www.iLiveElectronics.com)

Para descargar este Manual del Usuario en inglés, español y francés, o para obtener respuestas a preguntas frecuentes, visite la sección de apoyo en: [www.iLiveElectronics.com](http://www.iLiveElectronics.com)

Pour télécharger ce guide de l'utilisateur en anglais, espagnol ou français, ou pour obtenir des réponses à des questions fréquemment posées, consultez la rubrique d'assistance sur: [www.iLiveElectronics.com](http://www.iLiveElectronics.com)

Copyright © 2018 Digital Products International (DPI, Inc.) All other trademarks appearing herein are the property of their respective owners. Specifications are subject to change without notice.