



# Qwik-Fill On-Board Battery Watering System Installation and Operation

## Package Contents

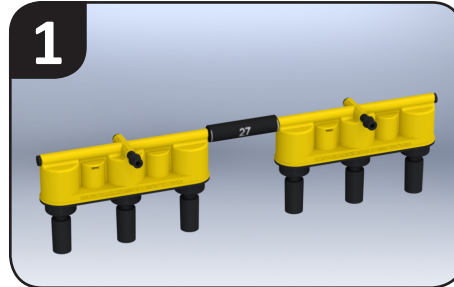


Illustration purposes only. Actual product is subject to change.

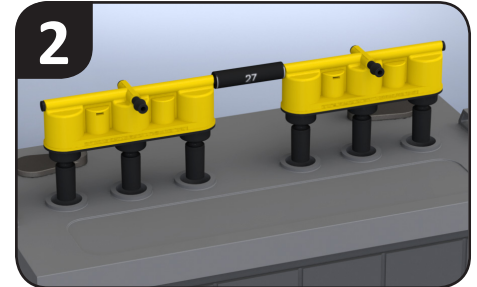
## Installation

### Important

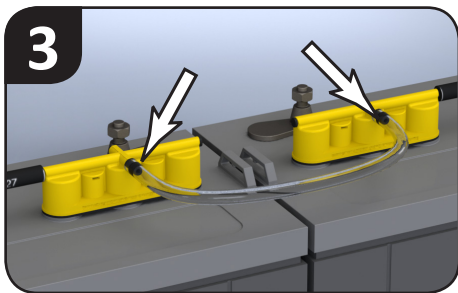
Prior to initial installation, inspect the existing battery water level. If they have been neglected and the level is extremely low, manually fill each cell so all plates are covered. Then, charge the batteries, before installing and using Qwik-Fill to top off. Topping off a battery that has been neglected and then charging can cause the water level to expand during the charging process resulting in the loss of electrolyte. Once Qwik-Fill is installed, monthly topping off after charging will prevent an extremely low water level to occur.



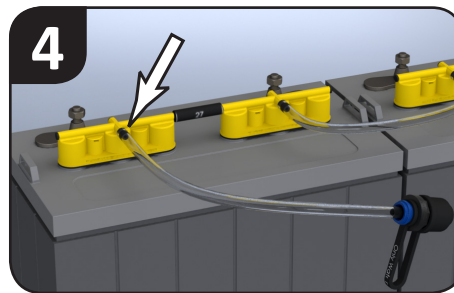
Join two manifolds together as shown using the appropriate size manifold jumper for your battery group size. The manifold jumpers are marked and can be easily cut with a utility knife or a pair of scissors.



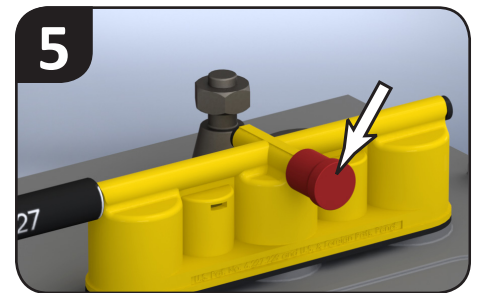
Carefully remove your battery's existing caps and insert a manifold assembly into each battery. Press each assembly firmly in place so that it fits flush with the battery top.



Link multiple batteries together using the clear tubing. If the batteries are separated by several feet, allow the tubing to sag between batteries. Ensure that the tops of all batteries linked together are at the same level. For optimum performance, it is best to limit the number of batteries connected to a single fill point to two.



Connect the water supply line to one end of the battery "chain". The 4' of tubing supplied may be cut to the desired length or if a longer length is required 20' of 1/4" ID flexible tubing is available in the Qwik-Fill accessory pack. (sold separately)



Cover the remaining barb with a red end cap and installation is complete.

## Operation

### Important

Batteries should only be filled after charging.

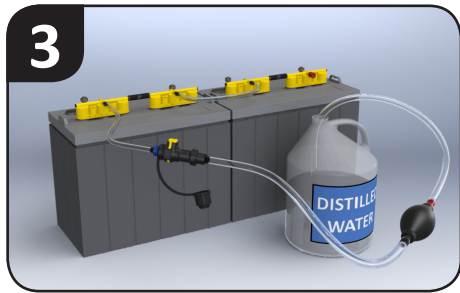
⚠ DANGER / POISON		
<p><b>SHIELD EYES</b> EXPLOSIVE GASES CAN CAUSE BLINDNESS OR INJURY</p>	<p><b>NO</b> • SPARKS • FLAMES • SMOKING</p>	<p><b>SULFURIC ACID</b> CAN CAUSE BLINDNESS OR SEVERE BURNS</p>



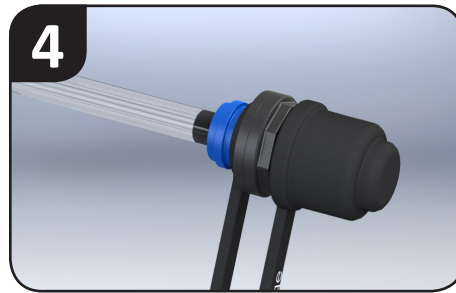
Insert the squeeze bulb filler assembly into a jug of distilled water. Prime bulb by squeezing until it is filled with water.



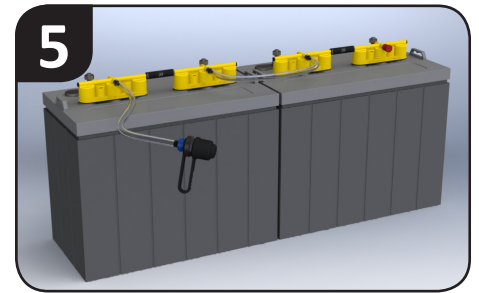
Remove the dust cap from the water supply line and connect it to the squeeze bulb filler assembly by snapping the quick couplers together.



Squeeze the bulb with firm pressure to begin pumping water into the battery cells. When the bulb becomes hard, all cells are full.



Immediately disconnect the squeeze bulb filler assembly from the water supply line and replace the dust cap.



Any water remaining in the squeeze bulb filler assembly may be pumped back into the distilled water jug.

Note: For general winterizing, drain excess water in water supply line by pushing the spring loaded button on the end of the line. To remove the clear tubing (if necessary), pinch the tubing next to fitting, carefully twist and pull straight off.

## Typical Installation Configurations

The diagrams below show typical battery arrangements and how they might be plumbed with Qwik-Fill. The letters below each diagram indicate which Qwik-Fill Kits would be required for that configuration. Although the tubing between batteries can be up to a distance of 8', it may be more desirable to have separate fill points in the front and rear of the boat.

	Fill Point
	Battery
	Required kit

