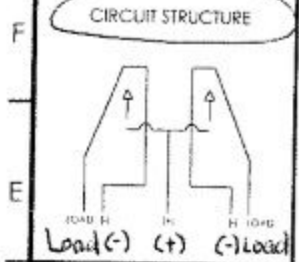


S125

8 | 7 | 6 | 5 | 4 | 3 | 2 | 1



NOTES:

SPECIFICATIONS:
 40A 12VDC Peak
 20A 12VDC Continuous

MATERIALS:

CONTACT RESISTANCE:
 50mΩ max

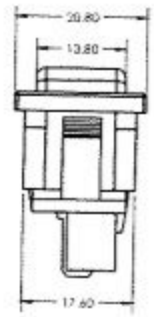
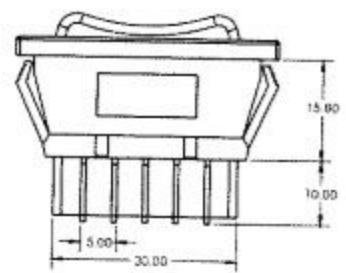
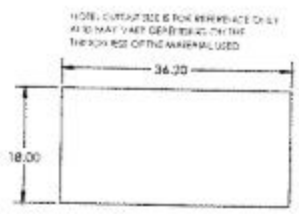
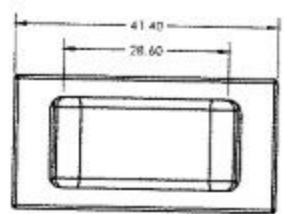
DIELECTRIC STRENGTH:
 1 minute 1500VAC

INSULATION RESISTANCE:
 500VDC 100MΩ min

OPERATING TEMPERATURE:
 -25°C +85°C

ELECTRICAL LIFE:
 10,000 Cycles

APPROVALS:



REV	DESCRIPTION	DO NOT SCALE DRAWING	
		TOLERANCE UNLESS OTHERWISE SPECIFIED 40.2	DEFINITION OF MOMENTARY OR OF MOMENTARY ON BLACK

8 | 7 | 6 | 5 | 4 | 3 | 2 | 1