



Installation Instructions

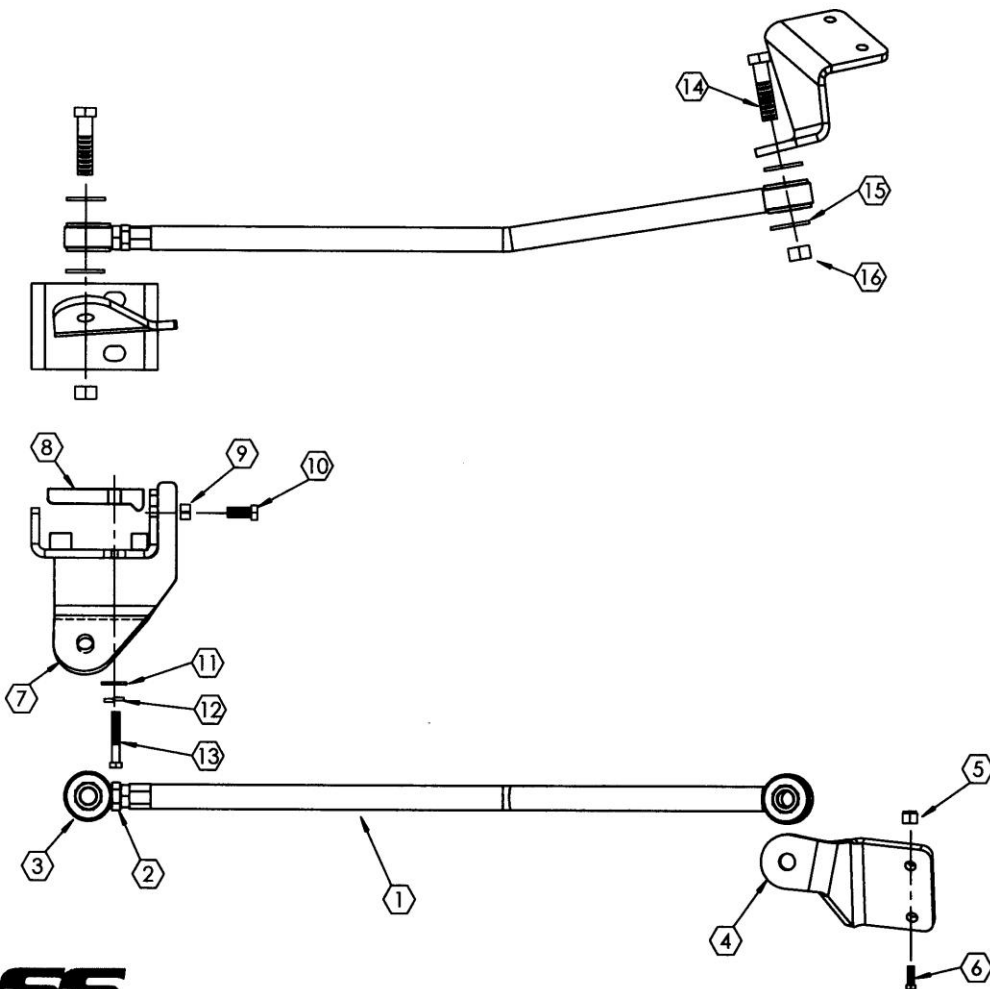
#SS402 - Rear Trac Bar

This product is designed to eliminate side shift of the rear axle on
E-350 C-Chassis

Installation time is 1 - 2 hours

* A qualified mechanic using normal automotive tools and following all safety measures known should perform installation of this product. Components are shown below:

SS402 TRAC BAR PARTS LAYOUT



| ITEM # | Description | QTY |
|--------|--------------------------|-----|
| 1 | SS402 Rod Assembly | 2 |
| 2 | Jam Nut - 3/4 16UNF | 1 |
| 3 | Rod End Assembly | 1 |
| 4 | Axle Bracket | 1 |
| 5 | NyLock Nut - 1/2 13UNF | 2 |
| 6 | Bolt - 1/2x 1 1/2 13UNF | 2 |
| 7 | Frame Bracket | 1 |
| 8 | Nut Plate | 1 |
| 9 | Nut - 1/2 20UNF | 2 |
| 10 | Bolt - 1/2x1 1/4 20UNF | 2 |
| 11 | Flat Washer - 5/8 | 2 |
| 12 | Lock Washer - 5/8 | 2 |
| 13 | Bolt - 5/8x2 3/4 18UNF | 2 |
| 14 | Bolt - 3/4x3 16UNF | 2 |
| 15 | Flat Washer - 3/4 | 4 |
| 16 | Lock Top Nut - 3/4 16UNF | 2 |

| Item # | Torque Spec. (ft. lbs.) |
|--------|-------------------------|
| 2 | 100-150 |
| 6 | Securely |
| 10 | Securely |
| 13 | Securely |
| 14 | 150-180 |



Installation Instructions - # SS402 – Rear Trac Bar

NOTE: Some exhaust and brake line modifications may be necessary.

A. Preparation

Move the coach to a level, flat surface. If necessary, drive the rear wheels of the coach onto 4” high blocks and set the brakes or you may drive the coach over a work pit and chock the front wheels. Block off adequate space at the rear of the coach to work.

B. Installation of the Axle Bracket

Remove the right rear shock absorber. Set it aside with its hardware.

Assemble the Axle Bracket to the shock mount with two (2) ½-13 bolts and two nylock nuts. Tighten securely. Reinstall the shock absorber.

Note: Upper bolt may be reversed to enable assembly.



Installation Instructions - # SS402 – Rear Trac Bar

C. Installation of the Frame Bracket

Install the frame bracket and flat plate to the frame rail. The frame rail must be between the flat plate and Trac Bar frame bracket. The Trac Bar frame bracket is designed to mount to the bottom and sides of the frame rail. Position the bracket on the rear frame cross-member in front of the fuel tank. Place the compression plate with lip facing down and towards center of vehicle. Make sure not to contact any wires, brake lines, etc. Install bolts through the bottom of frame bracket (use blue Loctite and tighten “just snug” for now).

Install jam nuts to ½-20 bolts and install on the frame bracket. Tighten to push nut plate securely to the inside of the frame rail. Next, tighten jam nut against frame bracket. Now tighten the bottom bolts securely.

As necessary, install convoluted tubing over the brake line and secure with cable tie wraps.



Installation Instructions - # SS402 – Rear Trac Bar

D. Installation of Rod Assembly

Position the rod assembly to the rear of axle bracket and frame bracket (preferred) or in an alternative position to maintain in line position of the rod assembly. Install the rod assembly using the $\frac{3}{4}$ " bolts, flat washers and lock nuts. Be sure that there is a flat washer on each side of the urethane bushing. When adjusting the length of the rod assembly, it is necessary that the coach's full weight be on the suspension.



E. Torque Specifications & Follow-Up

Be sure to check all fasteners for tightness, including the jam nut on the rod assembly. Torque the $\frac{3}{4}$ " rod end bolt to 150 – 180 ft. lbs. Torque the jam nut to 100 - 150 ft. lbs. This completes the installation.

Test drive. Complete and mail the warranty card.

Re-check torque in 6 months.

Your comments are greatly appreciated. Please feel free to contact SuperSteer® at 888-898-3281 or e-mail at john@supersteerparts.com

Thank you for your purchase of the SuperSteer® Rear Trac Bar.