



Installation Instructions

Pickup - Rear Trac Bar

**This product is designed to eliminate side shift of the rear axle.
Installation time is 1.5 hours.**

***A qualified mechanic using normal automotive tools and following all safety measures known should perform installation of this product. Components are shown below:**

Installation Instructions for Pickup Rear Trac Bar

A. Preparation

Move the vehicle to a level, flat surface. If necessary, drive the rear wheels of the vehicle onto 4" high blocks and set the brakes and chock the front wheels or drive the vehicle over a work pit and chock the wheels. Block off adequate space at the rear of the vehicle to work.

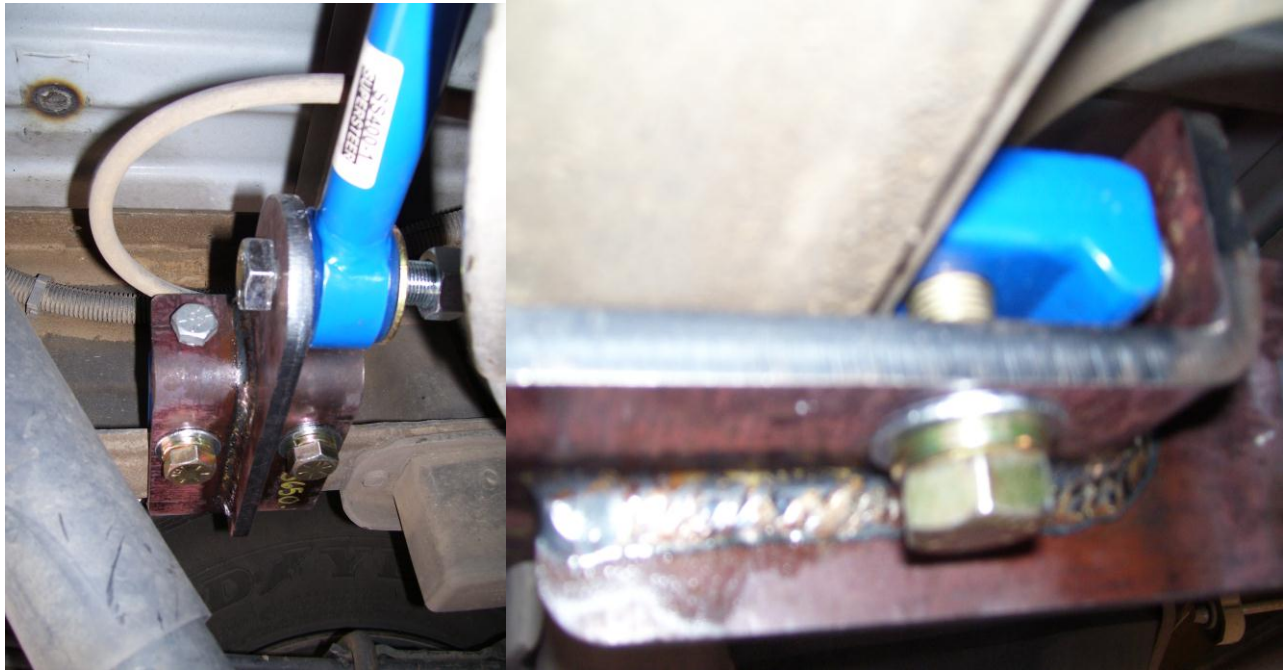
B1. Installation of the Frame Bracket (with box frame)

Install backing plate with bolts and washers over the top side of the frame rail. Position frame bracket on the bottom side of the frame using washers and lock nuts. Leave nuts loose for possible adjustment.



B2. Installation of the Frame Bracket (channel frame)

Position frame bracket on bottom side of the frame. Position sandwich plate on the inside bottom of the frame to where the lip of the sandwich plate is towards the adjustment screw and facing upwards. Snug all four bolts through frame bracket into sandwich plate.



Note: Some frame brackets bolt directly to frame using existing holes (see pic)



C. Installation of the Axle Bracket

The axle bracket fits on the on back side of the axle and is held on with the supplied U-bolt. Make sure the cleat is positioned between the axle bracket and the axle housing. Be aware of brake lines when positioning axle bracket and U-bolt. Install nuts and washers on the U-bolt. Leave axle bracket assembly loose as adjustment may be required.



D. Trac Bar Installation

Position trac bar onto frame bracket using 3/4" bolts and washers, making sure to use a washer to cover exposed bushing. Snug loosely with lock nut. Adjust threaded end of trac bar, frame bracket and axle bracket to optimum position for length and clearance. Make sure axle bracket is as close to vertical as possible. Torque axle bracket, frame bracket (including pinch bolts if you have a channel frame) bolts to specifications. Tighten 3/4" bolts and jam nut on trac bar.

Note: Check for clearance on all undercarriage parts (exhaust, shocks, wiring, and brake lines)



E. Torque Specifications & Follow-Up

Tighten the 3/4" bolt and nut on the trac bar to 150-180 ft. lbs. Tighten bolt and nut on the frame bracket to spec. Lastly, tighten the jam nut on the rod assembly to 100-150 ft. lbs.

Double-check the fasteners to make sure all are properly torqued.

Test drive. Double-check that there are no clearance issues.

Complete and mail the warranty card. Re-check torque in 6 months.

Your comments are greatly appreciated. Please contact SuperSteer® at 888-898-3281 or e-mail at john@supersteerparts.com

***Thank you for your purchase of the
SuperSteer® Rear Trac Bar.***