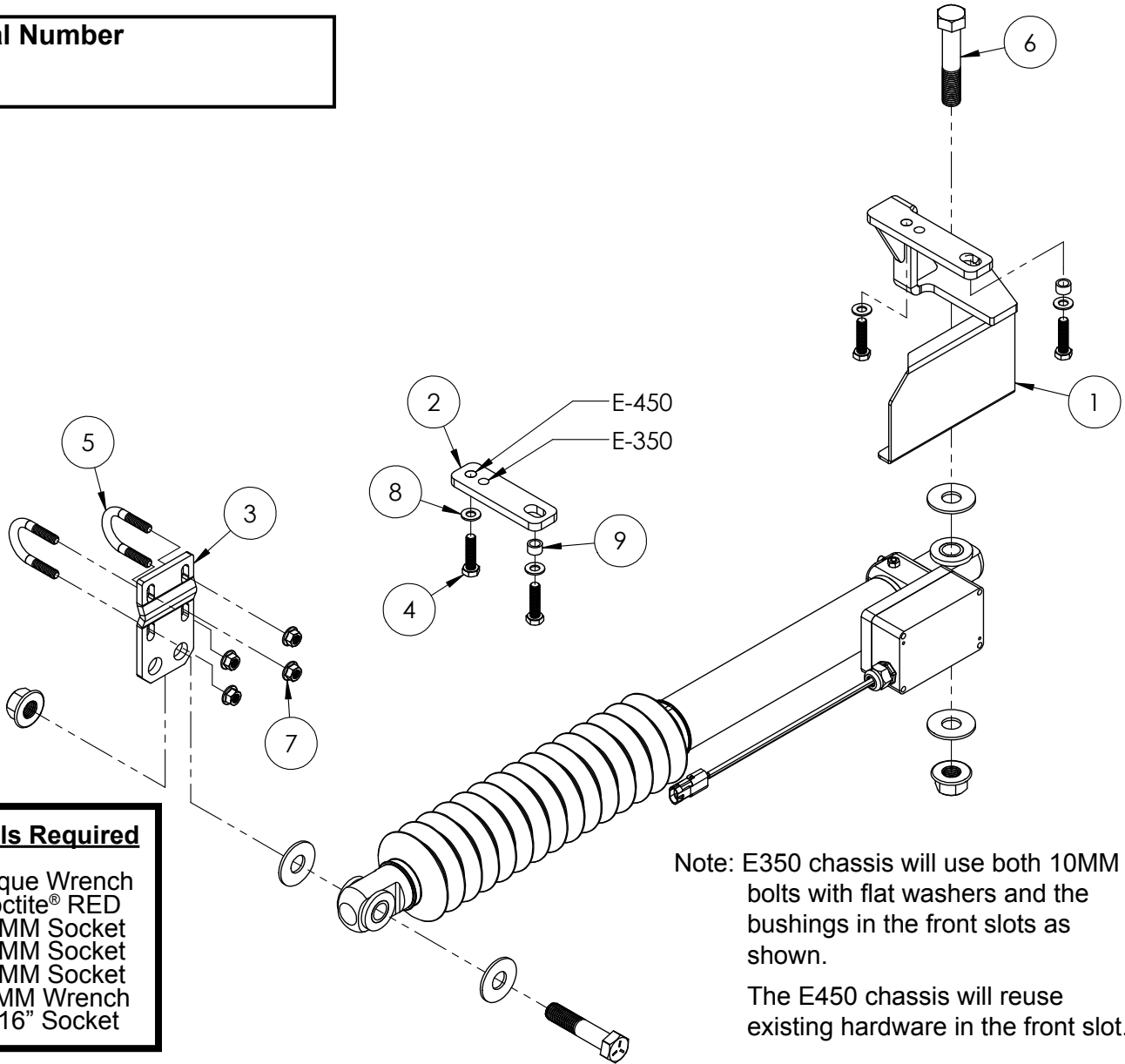




# TC5812 E350/E450 TruCenter Bracket Kit Installation Instructions

Serial Number



### Tools Required

- Torque Wrench
- Loctite® RED
- 13MM Socket
- 15MM Socket
- 18MM Socket
- 18MM Wrench
- 9/16" Socket

Note: E350 chassis will use both 10MM bolts with flat washers and the bushings in the front slots as shown.

The E450 chassis will reuse existing hardware in the front slot.

Item No.	Part No.	Description	Qty.
1	61-7578	Attachment Plate, DS	1
2	101-8926	Spacer Plate, PS	1
3	102-6343	Tie Rod Bracket	1
4	201-0518	10MM-1.5 x 40MM Hex Head Bolt, Grade 10.9, ZP	4
5	201-0715	3/8"-16 x 1-3/8" U-Bolt, Grade 5, ZP	2
6	201-0914	3/4"-10 x 4" Hex Head Bolt, Grade 5, ZP	1
7	202-0071	3/8"-16 Hex Flange Whiz Lock Nut, ZP	4
8	203-0003	3/8" Flat Washer, ZP	4
9	207-1078	Bushing, .615" x 3/8"	2

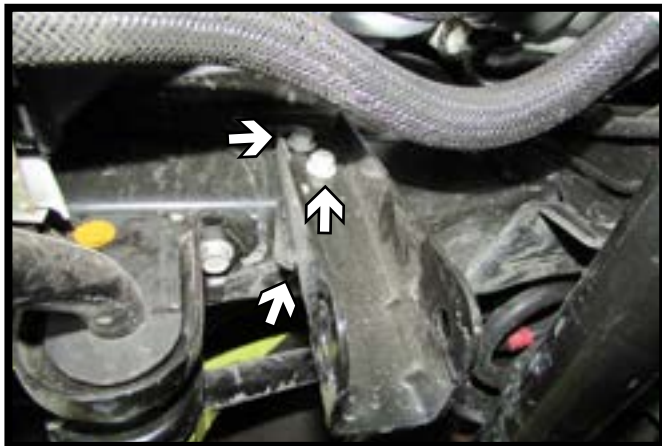
**IMPORTANT:** Use only genuine factory replacement parts on your bracket kit. Do not substitute homemade or nontypical parts. If a bolt is lost or in need of replacement, for your safety and the preservation of your bracket kit, be sure to use a replacement bolt of the same grade. Repair parts may be ordered through your nearest **Blue Ox** dealer or distributor.

TC5812  
E350/E450 TruCenter Bracket Kit  
Installation Instructions

1. Position the vehicle on a level surface with the front wheels straight ahead and sitting at normal ride height. Set the brake and chock all the wheels.



2. Using a 18MM socket, remove the bolt from the steering stabilizer shock (left). Using a 15MM socket, remove the four (4) u-bolts from the other end of the steering stabilizer shock (right). Set the shock and all hardware aside it will not be reinstalled.



3. Using a 13MM socket, remove the three (3) bolts from the steering stabilizer bracket. There are two (2) bolts at the top and one (1) behind.



4. Using 15MM & 18MM sockets, remove the two (2) bolts from the PS sway bar. Install the spacer plate in between the sway bar and frame. Reinstall the sway bar with the 10MM hardware provided and fully tighten.

Note: On E450 chassis, reinstall the front existing bolt in lieu of the 10MM bolt.

\*\* Use Loctite® Red on all bolt threads and tighten all bolts to the appropriate torque.

TC5812  
E350/E450 TruCenter Bracket Kit  
Installation Instructions



4. Using 15MM & 18MM sockets, remove the two (2) bolts from the DS sway bar. Install the attachment plate in between the sway bar and frame. Reinstall the sway bar with the 10MM hardware provided and fully tighten.

**\*\* Use Loctite® Red on all bolt threads and tighten all bolts to the appropriate torque.**



5. Loosely install the tie rod bracket onto the drag link. Loosely install the solenoid end of the TruCenter onto the attachment plate with the 3/4" x 4" bolt supplied in the bracket kit and 3/4" hardware provided in the TruCenter kit.

Loosely attach the opposite end of the TruCenter to the tie rod bracket with the hardware provided in the TruCenter kit.

6. Insure the TruCenter is parallel with the ground, then tighten down the tie rod bracket u-bolts to 30-35 ft/lbs, while maintaining an even amount of threads extending past the nuts. Tighten down the TruCenter bolts on both ends to 180-200 ft/lbs.

Note: Be sure the installed unit clears all other parts of vehicle by turning steering wheel to both extreme right and left positions. If unit scrapes or binds at any point, make necessary corrections by rotating unit on tie rod to obtain necessary clearance.

**\*\* Use Loctite® Red on all bolt threads and tighten all bolts to the appropriate torque.**

7. Install TruCenter Steering Control wiring according to instructions included in its package.
8. Dealer or installer be certain the user receives these instructions.

TC5812  
E350/E450 TruCenter Bracket Kit  
Installation Instructions

Insure that you use the proper TruCenter steering control unit for your application. Using too strong or too weak of a steering control may result in improper or undesirable handling.

**Product Safety Policy Statement**

It is, and shall continue to be, a primary objective of Blue Ox Towing Products to provide customers with safe and reliable products. Blue Ox will, and has, established safety procedures in product design, manufacture, promotion and sales; and will coordinate efforts to promote customer safety to the greatest extent possible. Each department has primary responsibility for the promotion of safety under the guidelines of the Product Safety Committee.

If the TruCenter is in an accident, it must be replaced. DO NOT use it again! An accident can cause unseen damage and using it again could result in more damage or serious injury. DO NOT use the TruCenter if it is damaged or missing parts.

**CUSTOMER SERVICE COMMITMENT**

Blue Ox® is committed to providing you with exceptional customer care throughout your lifetime with our products. Our team is here to assist you with any questions you may have regarding the performance of your product. Simply call (402) 385-3051 and you can speak with our technical service team.

Additionally, please visit our website to see which rallies our Destination America team will be attending. For a nominal fee, our service technician will service your towing system to ensure it's in proper working condition. Also, as a commitment to our customers, should you visit our factory, you can stay at our full service Blue Ox® campground at no charge along with enjoying a factory tour.

Again, thank you for being our customer and for the confidence you have shown in the performance of our products. It is because of customers like you we enjoy the success we have today.

© 2016 Blue Ox  
One Mill Road, Industrial Park  
Pender, Nebraska 68047  
Phone: (402) 385-3051  
Fax: (402) 385-3360  
[www.blueox.com](http://www.blueox.com)