



Error codes

During operation when an error occurs the board will use the led's to indicate where the problem exists. For motor specific faults the green led will blink 1 time for motor 1, and 2 times for motor 2. The red led will blink from 2 to 9 times depending on the error code.

The error codes are as follows:

- 2 Battery drop out: Battery capacity low enough to drop below 6 volts while running
- 3 Low battery: Voltage below 8 volts at start of cycle
- 4 High battery: Voltage greater than 18 volts
- 5 Excessive motor current: High amperage, also indicated by 1 side of slide continually stalling.
- 6 Motor short circuit: Motor or wiring to motor has shorted out.
- 8 Hall signal not present: Encoder is not providing a signal. Usually a wiring problem.
- 9 Hall power short to ground: Power to encoder has been shorted to ground. Usually a wiring problem.

When an error code is present, the board needs to be re-set. Energizing the extend/retract switch resets the board. Energize the extend/retract switch again for normal operation.

Manual override

In the event that the Inwall Slide Unit fails to operate and manual operation is necessary, proceed as follows:

1. Locate the control board.
2. Un-plug both motors.



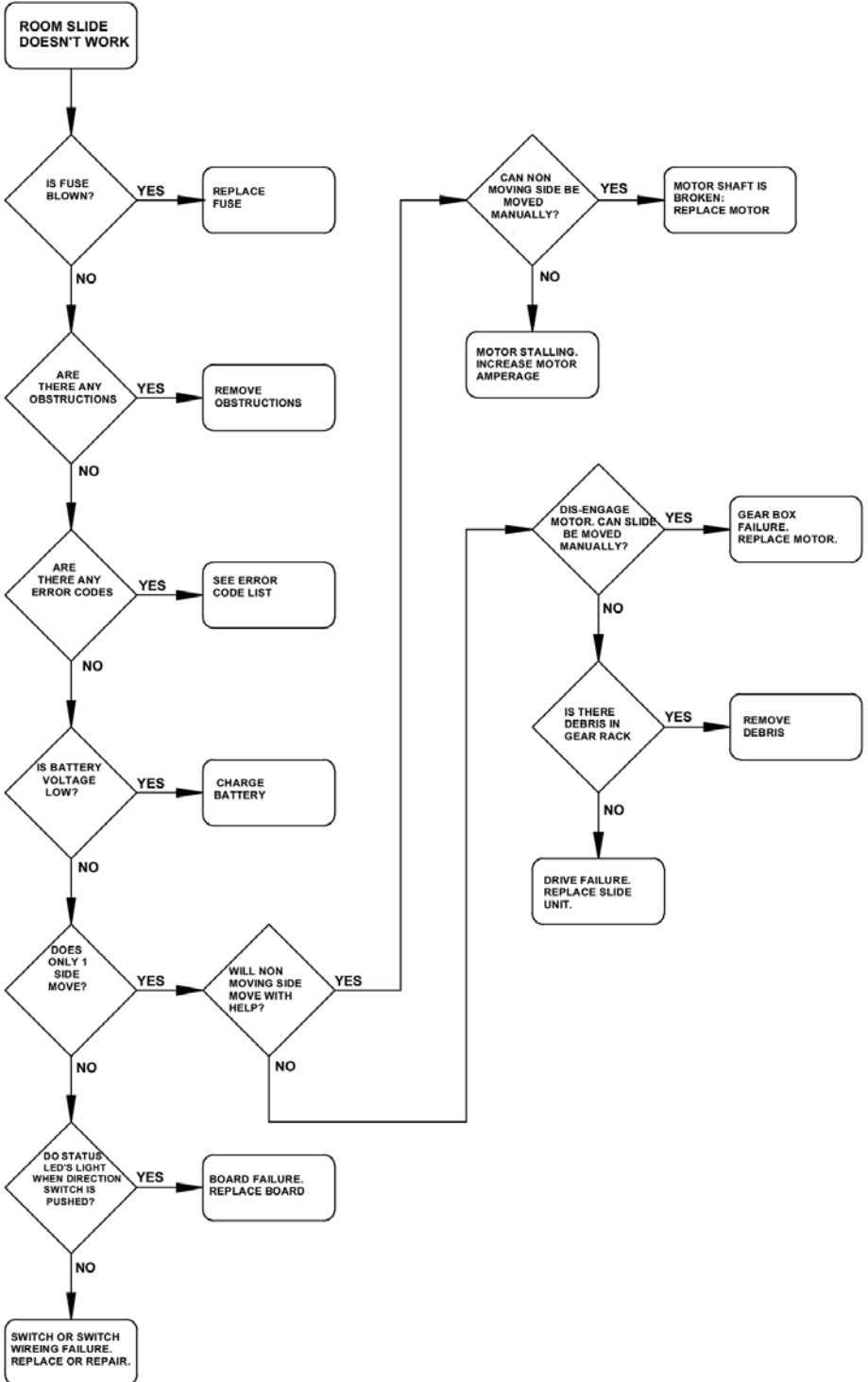
3. The room may now be pushed in or out as desired. Larger rooms may need several people to push. Try to keep both sides of the room even. When the room is completely in, plug both motors back in to the controller, this applies a brake to the motors and keeps the room locked in position.

WARNING!

DO NOT MOVE THE RV UNLESS THE MOTORS ARE PLUGGED IN!

If you are unable to move the room after following the above procedure, then both motors will need to be disengaged.

Trouble shooting flow chart



Checking Fuses

The Schwintek Inwall Slide requires a minimum of 30 amp fuse. Check the 12 volt fuse box for blown fuses, and replace any if necessary. Consult the rv manufacturers documentation for the location of the 12 volt fuse box, and the location of the Room Slide Controller's fuse. If the fuse blows immediately upon replacement, there is a problem with the wiring to the Inwall Slide control box. Have qualified service personnel check and repair.

Obstructions

Check outside the rv for possible obstructions: tree, post, car, etc... Check inside the rv for any obstructions: luggage, furniture, open cabinets, etc... Also check for smaller objects that may be wedged under the floor or in the sides of unit. Remove obstructions before proceeding.

Error Codes

Consult rv manufacturer's documentation for the location of the Inwall Slide Controller. See page 1 for a description of the error codes, and possible problems.

Low Voltage

The Schwintek Inwall Slide Controller is capable of operating the room with as little as 8 volts. But at these lower voltages the amperage requirement is greater. Check voltage at the controller. If voltage is lower than 11 volts, it is recommended that the battery be placed on a charger until it is fully charged. It may be possible to 'jump' the rv's battery temporarily to extend or retract the room. Consult the rv manufacturer's owners manual on the procedure for 'jumping' or charging the battery.

*******Never 'jump' or charge the battery from the power connections on the Inwall Controller. Always do this at the battery.*******

Only 1 side moving

The Schwintek Inwall Room Slide has a separate motor to operate each side of the room. Does only 1 side of the room move a short distance (2 to 4 inches) and stop.

Will non moving side move with help?

If only 1 side of the room is moving, then with someone's assistance press the switch to extend or retract the room while pushing the non moving side in the appropriate direction. On larger rooms it may be necessary to have 2 or more people pushing the room.

Non moving side moved manually

Try to push the non moving side in and out. If a motor shaft has broken then it will be possible to move that side of the room several inches by hand. Larger rooms may require several people to push.

Debris in the rack

Check all 4 gear racks on the side of the room for debris.

Do status led's light

Consult the rv manufacturers documentation for the location of the Room Slide Controller. When the room slide direction switch is actuated, do the status led's light up. Check this in both the extend and retract modes.

**IF YOU HAVE ANY PROBLEMS OR QUESTIONS CONSULT YOUR LOCAL AUTHORIZED
DEALER OR CALL LIPPERT AT:
(866) 524-7821.**