



Error codes

During operation when an error occurs the board will use the led's to indicate where the problem exists.

For motor specific faults the green led will blink 1 time for motor 1, and 2 times for motor 2. The red led will blink from 2 to 9 times depending on the error code.

The error codes are as follows:

- 2 Battery drop out: Battery capacity low enough to drop below 6 volts while running
- 3 Low battery: Voltage below 8 volts at start of cycle
- 4 High battery: Voltage greater than 18 volts
- 5 Excessive motor current: High amperage, also indicated by 1 side of slide continually stalling.
- 6 Motor short circuit: Motor or wiring to motor has shorted out.
- 8 Hall signal not present: Encoder is not providing a signal. Usually a wiring problem.
- 9 Hall power short to ground: Power to encoder has been shorted to ground. Usually a wiring problem.

When an error code is present, the board needs to be re-set. Energizing the extend/retract switch resets the board. Energize the extend/retract switch again for normal operation.



WARNING!

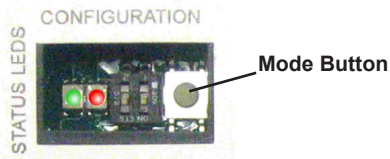
DO NOT MOVE THE RV UNLESS THE MOTORS ARE PLUGGED IN!

Manual Override - C1 & C2 versions

1. Electronic Manual Override (available on board revision C1 and newer)

Locate the circuit board

Press the "mode button" six times quickly, press a 7th time and hold for approximately 5 seconds.



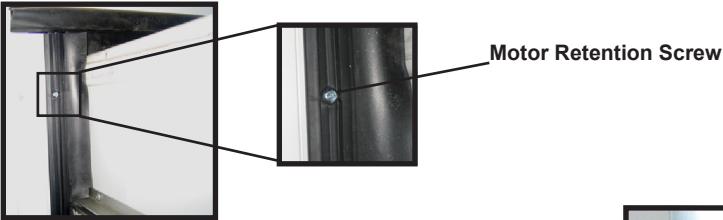
The red and green LED lights will begin to flash, confirming the override mode. Release mode button.

Back inside coach; use the normal slide control switch to retract the room.

A video demonstrating this technique can be found on the internet.

Follow this link: <http://www.youtube.com/watch?v=ymt1Uesf0Pc>

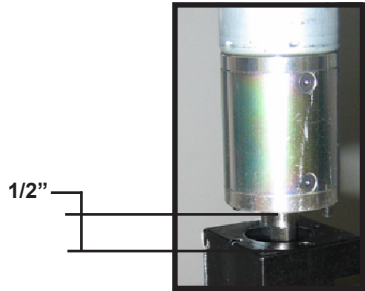
2. Disengage motors, manually retract room and travel lock.



Locate and remove motor retention screw located near top of each vertical column.



Bend back wipe seal and visually locate motor



Pull the motor up until disengaged, about 1/2"

Repeat this process for both sides of slide room.

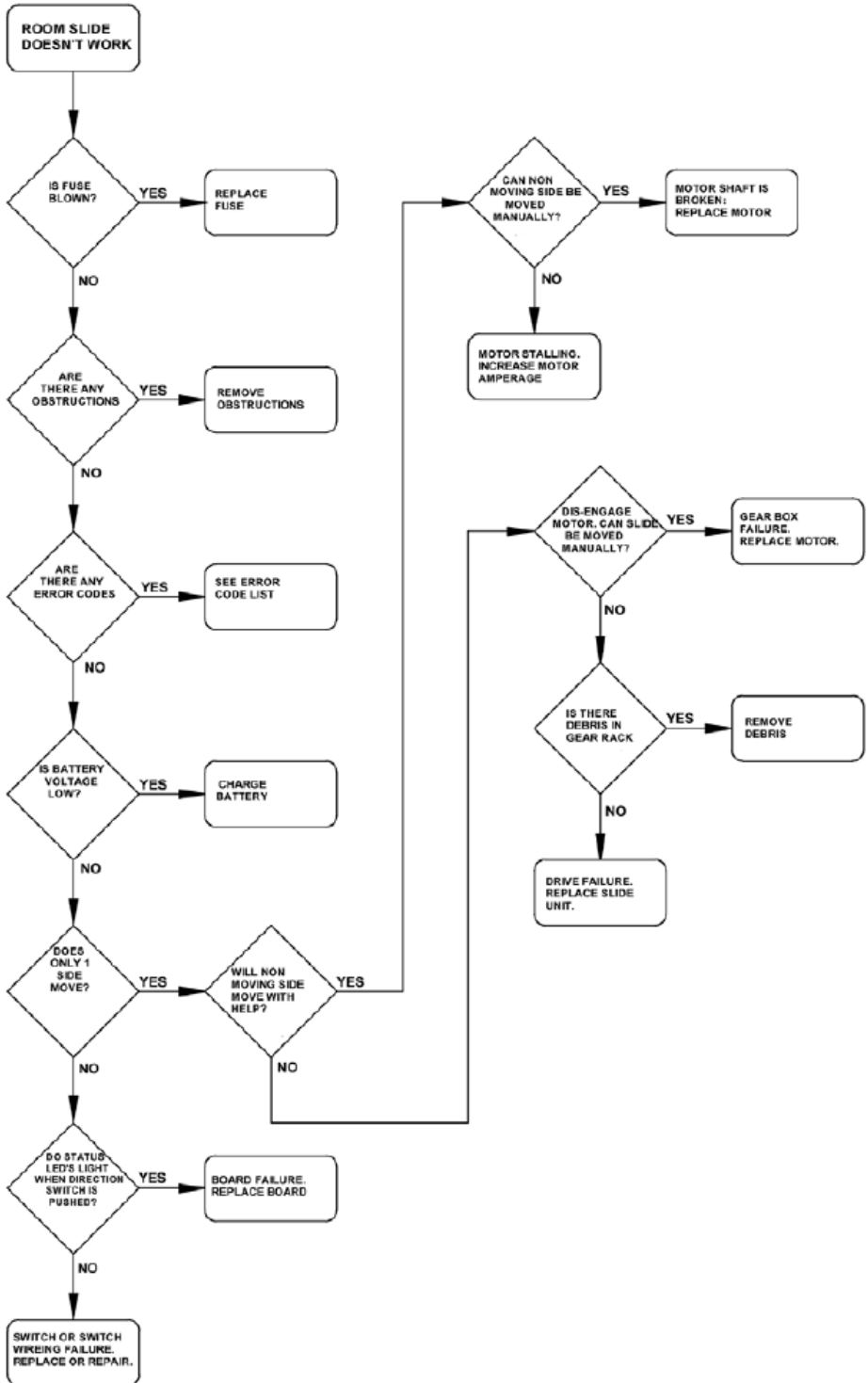
Push or pull room back in to opening, keep both sides relatively even.

The room must be travel locked to keep room in place for road travel.

A video demonstrating this technique can be found on the internet.

Follow this link <http://www.youtube.com/watch?v=ymt1Uesf0Pc>

Trouble shooting flow chart



Checking Fuses

The Schwintek In-Wall™ Slide requires a minimum of 30 amp fuse. Check the 12 volt fuse box for blown fuses, and replace any if necessary. Consult the rv manufacturers documentation for the location of the 12 volt fuse box, and the location of the Room Slide Controller's fuse. If the fuse blows immediately upon replacement, there is a problem with the wiring to the In-Wall™ Slide control box. Have qualified service personnel check and repair.

Obstructions

Check outside the rv for possible obstructions: tree, post, car, etc... Check inside the rv for any obstructions: luggage, furniture, open cabinets, etc... Also check for smaller objects that may be wedged under the floor or in the sides of unit. Remove obstructions before proceeding.

Error Codes

Consult rv manufacturer's documentation for the location of the In-Wall™ Slide Controller. See page 1 for a description of the error codes, and possible problems.

Low Voltage

The Schwintek In-Wall™ Slide Controller is capable of operating the room with as little as 8 volts. But at these lower voltages the amperage requirement is greater. Check voltage at the controller. If voltage is lower than 11 volts, it is recommended that the battery be placed on a charger until it is fully charged. It may be possible to 'jump' the rv's battery temporarily to extend or retract the room. Consult the rv manufacturer's owners manual on the procedure for 'jumping' or charging the battery.

*******Never 'jump' or charge the battery from the power connections on the In-Wall™ Controller. Always do this at the battery.*******

Only 1 side moving

The Schwintek In-Wall™ Room Slide has a separate motor to operate each side of the room. Does only 1 side of the room move a short distance (2 to 4 inches) and stop.

Will non moving side move with help?

If only 1 side of the room is moving, then with someone's assistance press the switch to extend or retract the room while pushing the non moving side in the appropriate direction. On larger rooms it may be necessary to have 2 or more people pushing the room.

Non moving side moved manually

Try to push the non moving side in and out. If a motor shaft has broken then it will be possible to move that side of the room several inches by hand. Larger rooms may require several people to push.

Debris in the rack

Check all 4 gear racks on the side of the room for debris.

Do status led's light

Consult the rv manufacturers documentation for the location of the Room Slide Controller. When the room slide direction switch is actuated, do the status led's light up. Check this in both the extend and retract modes.

**IF YOU HAVE ANY PROBLEMS OR QUESTIONS; CONSULT
YOUR LOCAL AUTHORIZED DEALER OR CONTACT LIPPERT
PHONE: (866) 524-7821 - E-MAIL: warranty@lci1.com**