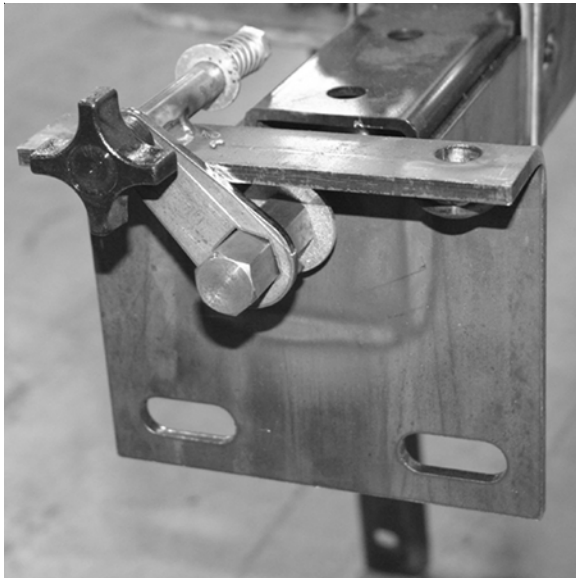
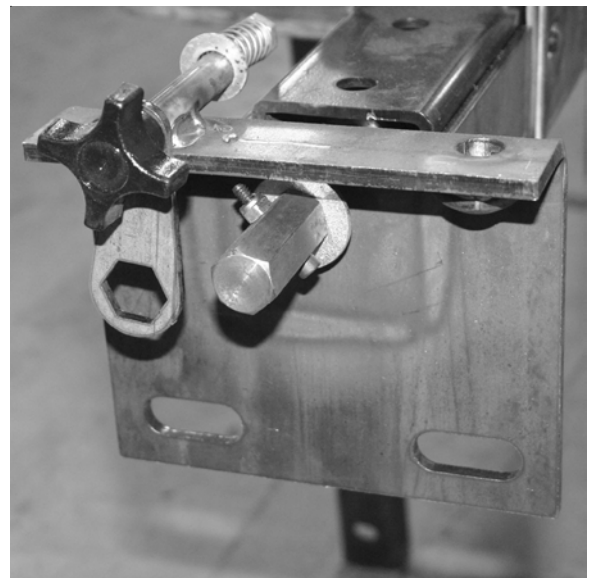




## MANUAL SLIDEOUT OPERATION



1. Manual Drive with Brake Plate engaged.



2. Pull Star Handle out and slide Brake Plate off 3/4" Hex Drive Nut to disengage brake.



3. Using ONLY a Manual Drive Crank Handle or Manual 3/4" Box End, Open End or Crescent Wrench. Adjust slide mechanism to desired location. Rotate Hex Drive Nut clockwise to move slide mechanism OUT and counterclockwise to move IN.

### **CAUTION**

1. DO NOT use an IMPACT WRENCH to move this system. An Impact Wrench provides too much torque and will result in a broken drive screw.
2. Use only manually operated 3/4" hand wrenches or the Manual Drive Crank Handle provided with the system.
3. Be sure system and room are squarely installed. Any bind in the room may result in a broken mechanism.
4. Be careful to avoid over tightening drive screw in either the IN or OUT direction.