

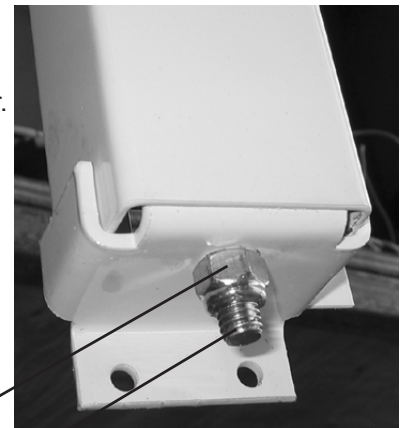
WEAR TAB FIELD REPAIR FOR EZ BEDLIFT

IN THE EVENT THAT A WEAR TAB IS DISLODGED FROM THE EZ BEDLIFT TROLLEY, FOLLOW THE PROCEDURE BELOW TO REPAIR THE SYSTEM:

1. Remove the nut from the bolt at the bottom of the assembly where the wear tab has become dislodged.
2. Remove the plate from the bottom of the assembly.
3. Tap firmly on the bolt and tension assembly to free the wear tab from the chain and gear.

NOTE: The system will efficiently operate WITHOUT wear tabs on the trolley but will make noise from the metal to metal contact.

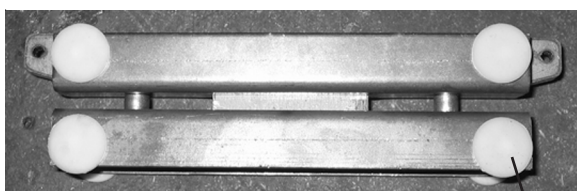
4. Check trolley for any other loose or lost wear tabs.
5. To replace wear tabs into trolley, the entire mechanism from the side effected must be removed from the wall.
6. Lift beds and/or dinette out of the trolleys and set them aside.
7. Disconnect cross shafts. Telescope the cross shafts out of the way.
8. Remove screws from the wall holding mechanism in place.
9. Remove mechanism from unit and lay facedown on a flat surface.
10. Pull trolley(s) out of the channel(s) and replace missing wear tab(s). Secure wear tabs in place with a silicone adhesive.
11. Return the trolley to the channel.
12. Secure the mechanism back in place on the wall.
13. Replace beds and/or dinette.
14. Replace bottom plate and 9/16" nut.
15. Be sure the beds and/or dinette is timed correctly and runs without a hitch..



9/16" Nut

Bolt

Bottom of Assembly



TROLLEY ASSEMBLY

WEAR TABS



ADJUSTMENT GEAR ASSEMBLY