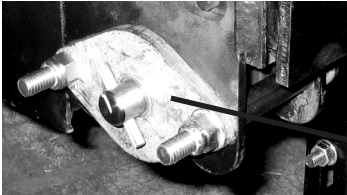


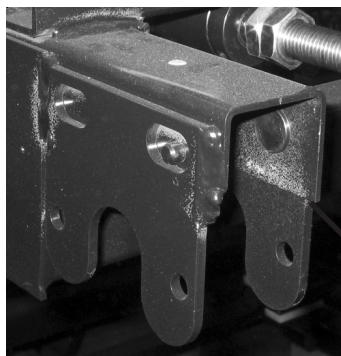


FIELD FIX FOR FOUR WINDS HYDRAULIC BEDROOM SLIDEOUT



GEAR PACK & BRACKET

1. Remove gear pack from the bracket using two (2) 9/16" wrenches.



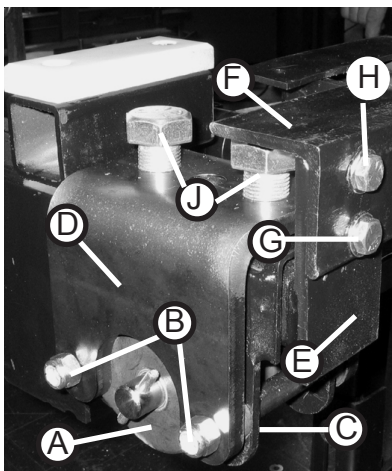
END CONDITION (GEAR PACK BRACKET)

2. Bolts must be removed from the gear pack bracket leaving the end condition of the slideout arm's outer channel exposed.

SADDLE BRACE



3. Saddle brace fits over the top of the end condition and gear pack bracket. Holes in the legs of the Saddle brace match-up with the holes in the gear pack bracket.



4. Replace gear pack (A) and install the bolts (B) back in the gear pack bracket (C) and saddle brace (D).

5. Drill a second hole in the front angle brace (E) and through the end condition of both right and left inner arm (F). Place a 5/16"-16 x 3/4" bolt (G) in the hole and secure with nut. Be sure to use washers on both sides. Add washers to the top bolt (H) also.

6. Thread two (2) 3/4"-13 x 1" bolts (J) into threaded holes on top of the saddle brace. These bolts are used to adjust the outer channel to remain in place during operation and prevent bowing and binding and skipping teeth.