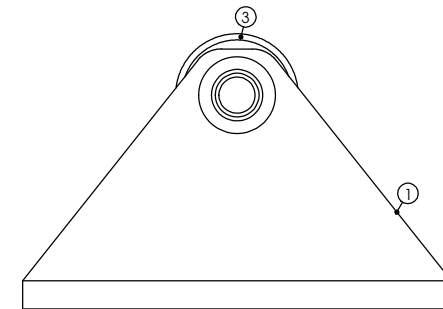
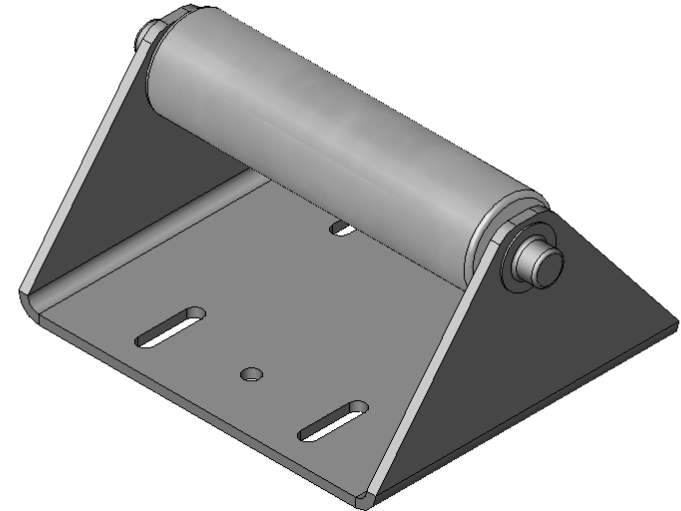
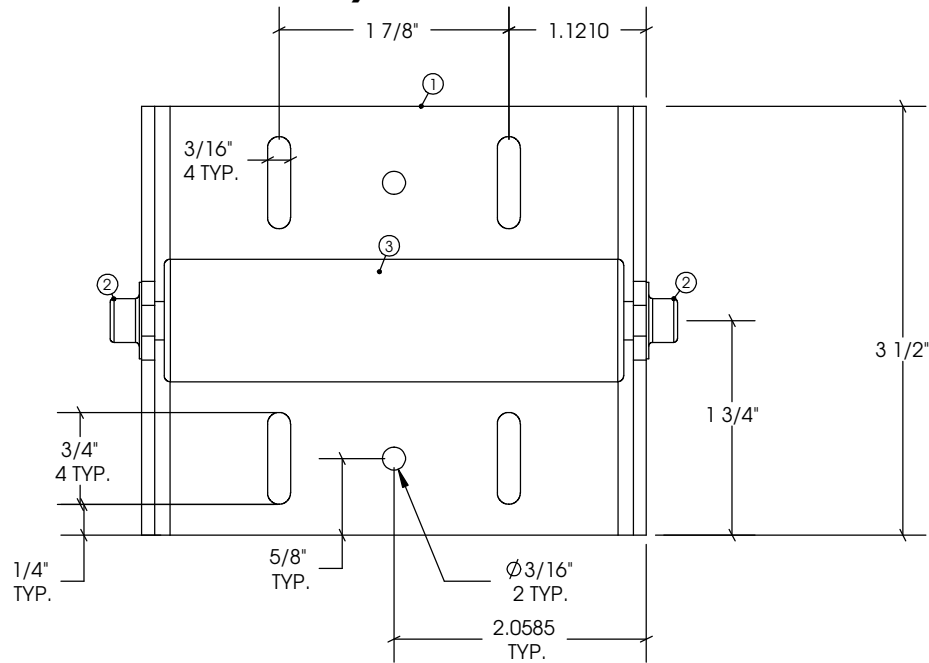


J-7 Roller Assembly

115616




ITEM	PART NO.	CONFIG	DESCRIPTION	NAME	GA	QTY.
1	100513	Default	3 1/2" X 4.1170 X 2.1196 X 2.1196	XMC	12	1
2	126481	Default	NUT - 5/16 WASHER CAP PUSHNUT "HAT CAP"	FASTENER		2
3	133588	Default	LONG ROLLER - 1.0000 X 3 3/4" (4100 AU)	ILONG ROLLER		1

REVISIONS			
REV.	DATE	INIT.	DESCRIPTION
A	03/26/2004	AM	CHANGED ROLLER HEIGHT FROM 1 1/2" TO 2"
B	06/21/2004	JM	RENAMED LSA0034-1 TO LSA0034-J7
C	06/25/2004	AM	CHANGED ROLLER HEIGHT FROM 2" TO 2 1/4"
D	11/24/2004	JM	PRINT NUMBER WAS LSA0034-J7
E	7/14/2008	ENG	REPLACED 133588 WITH NEW SUB ASSEMBLY

DRAWN BY:	NAME JWM	DATE 03/19/04	DRAWING NOTES: DIMENSIONS ARE IN INCHES TOLERANCES: FRACTIONAL: +/- 1/32" .XX: +/- 0.03 XXX: +/- 0.010 ANGLE: +/- 1 DEGREE	PROPRIETARY AND CONFIDENTIAL THE INFORMATION CONTAINED IN THIS DRAWING IS THE SOLE PROPERTY OF LIPPERT COMPONENTS, INC. ANY REPRODUCTION IN PART OR AS A WHOLE WITHOUT THE WRITTEN PERMISSION OF LIPPERT COMPONENTS, INC. IS PROHIBITED.
APPROVED BY:				

LIPPERT
LIPPERT COMPONENTS, INC.
A Lippert Components Subsidiary



2703 College Ave.
Goshen, IN 46528
(574)535-1125 Phone
(574)975-2883 Eng Fax

DWG. NO. 115616	REV. E
SCALE: 1:1.5	PAGE: 1 OF 1

Monday, July 14, 2008 11:43:52 AM -- C:_stwork\115616 -- REVISION : E