

HUSKYLINERS®

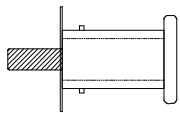
ALUMINUM ACCESSORIES

www.huskyliners.com

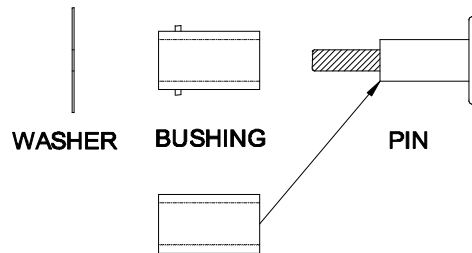
620.221.2268 – 800.344-8759 – (Fax) 620.221.7423 – P.O. Box 815 – Winfield, KS 67156

ALUMINUM TAILGATE INSTALLATION INSTRUCTIONS FORD TRUCK APPLICATION #15130

- Before beginning tailgate installation, first check the carton you have received to make sure it is not damaged. If there is visible damage, refer to the “DAMAGED” label on the carton for instructions. Next, check the carton to make sure it reflects the correct part number/application listing for your vehicle. If this information is correct for your vehicle, remove the tailgate from the carton. Further verify that you have the correct part by referencing the part label located on the bottom of the tail gate.
- Locate the hinge bushing housings on your Husky Liners tailgate (see photo below). Note that the tailgate comes with 3 hinge bushings pre-installed. One white bushing on the passenger’s side and one white and one clear bushing on the driver’s side. If you have a 2008 or newer Ford Super Duty, all bushings remain in place. If you have a 1997-2003 Ford 150, 1997-1998 Ford F250 Lt. Duty, 2004 Ford F150 Heritage Edition or 1999-2007 Ford Super Duty truck, you need to remove all three bushings before beginning installation.
- To begin installation, detach the support cables from the factory tailgate (leaving them attached to the truck bed). Remove the tailgate from the truck bed by positioning the tailgate approximately half open (about 45 degrees) and gently pulling it away from the vehicle.
- Install your new Husky Liners tailgate in the same manner the factory tailgate was removed. Once installed, attach the original Ford tailgate support cables to the lower most bolt on each side of the tailgate.
- Remove the original latch striker pins from the pickup box with a Torx® head wrench. Next, remove the washer and plastic bushing from the striker pin and slide on the Husky Liners supplied tubing (this tubing replaces the factory tubing—see sketch below). Replace the washer and re-install the striker pin.
- Adjust the striker pins up/down/forward/backwards with a Torx® wrench as needed to provide for a smooth and complete latch operation.
- **CARE AND USE:** Your Husky Liners aluminum tailgate is **Bright Coat Finished** for years of good looks. Maintain it as you would the painted areas of your truck (wash and wax). DO NOT use abrasive polishes or chrome cleaners.



ORIGINAL LATCH STRIKER PIN ASSEMBLY



HUSKY LINERS TUBING REPLACEMENT

Photo 2. Driver’s side bushing housing with 2 bushings installed. Remove these two and one on passenger’s side for applications listed above.

