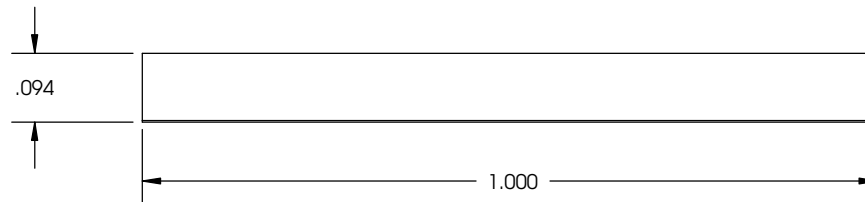
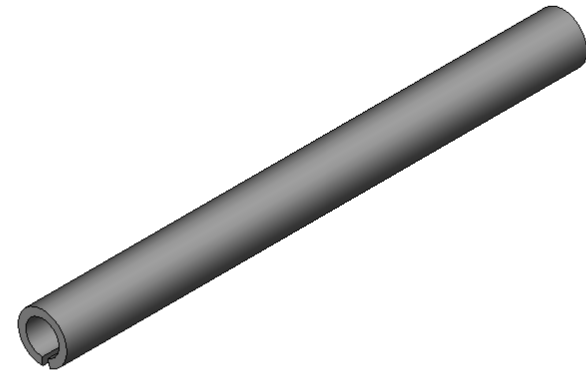


ROLL PIN - 3/32" X 1.000



REVISIONS			
REV.	DATE	INIT.	DESCRIPTION
B	4/15/2008	MARK M	CHANGE FROM 5/64 TO 3/32

DRAWN BY:	NAME JLC	DATE 2/01/08	DRAWING NOTES: DIMENSIONS ARE IN INCHES TOLERANCES: FRACTIONAL: +/- 1/32" .XX : +/- 0.03 .XXX: +/- 0.010 ANGLE: +/- 1 DEGREE	PROPRIETARY AND CONFIDENTIAL THE INFORMATION CONTAINED IN THIS DRAWING IS THE SOLE PROPERTY OF LIPPERT COMPONENTS, INC. ANY REPRODUCTION IN PART OR AS A WHOLE WITHOUT THE WRITTEN PERMISSION OF LIPPERT COMPONENTS, INC. IS PROHIBITED.
APPROVED BY:				

LIPPERT	
LIPPERT COMPONENTS, INC. A Lippert Components Subsidiary	
	2703 College Ave. Goshen, IN 46528 (574)535-1125 Phone (574)975-2883 Eng Fax
DWG. NO. 181003	REV. B
SCALE: 2:1	PAGE: 1 OF 1