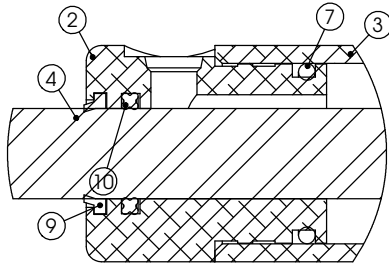
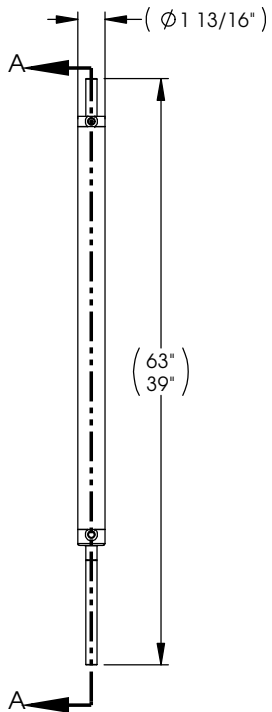
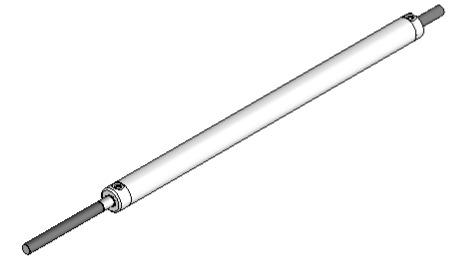
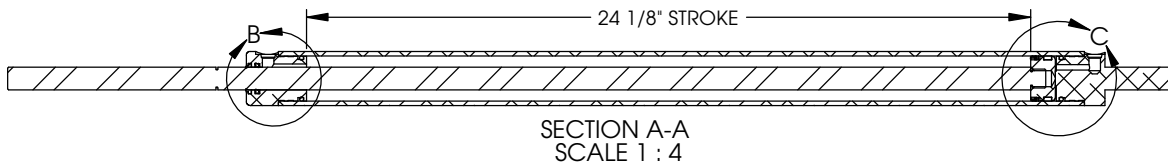


NOTES:

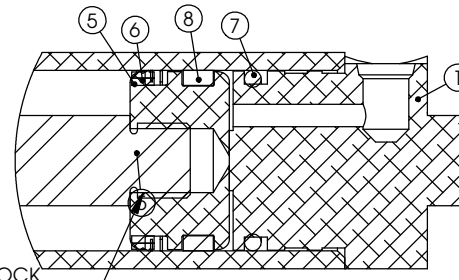
1. 3/4 - 10 NUTS REQUIRED
2. SAE #4 PORT FITTINGS REQUIRED
3. MAX CAPACITY: 4500 LBS
4. CAP/GLAND CRIMP RATING: 7500 PSI

REVISION HISTORY					
REV	DATE	DESCRIPTION	ECN	DWR	APVD
A	9/19/2013	RELEASED TO PRODUCTION		RAW	BC
B	2/24/2014	REMOVED 339168, UPDATED PARTS		RAW	
C	6/20/2014	UPDATED PRINT PER ECN	ECN-SP-DE-12544	RAW	MD
D	4/30/2015	UPDATE DESCRIPTION	ECN-SP-DE-14672	KSW	KB



DETAIL B
SCALE 1 : 1

- FULLY COAT THREADS:
 1. APPLY 7649 PRIMER
 2. APPLY 263 THREAD LOCK
 3. SCREW ON PISTON TIGHT WITHIN 1 MINUTE OF THREAD LOCK
 4. ALLOW THREAD LOCK TO CURE 12 HOURS PRIOR TO APPLYING HYDRAULIC FLUID



DETAIL C
SCALE 1 : 1

ITEM	PART NO.	CONFIG	DESCRIPTION	NAME	GA	QTY
1	339026	Default	ACTUATOR, CAP - 1 1/2" BORE	HYD CYLINDER		1
2	339027	Default	ACTUATOR, GLAND - 1 1/2" BORE	HYD CYLINDER		1
3	339028	Default	ACTUATOR BODY - 1 1/2" BORE, 24" STROKE, BLACK	HYD CYLINDER		1
4	339029	Default	ACTUATOR, ROD - 750 O.D. - 1 1/2" BORE - 24" STROKE	HYD CYLINDER		1
5	339030	Default	ACTUATOR, PISTON - 1 1/2" BORE	HYD FITTING		1
6	335510	Default	PISTON SEAL: 1.500 BORE	HYD FITTING		1
7	335511	Default	O-RING: 1.500 O.D. - 125	HYD FITTING		2
8	339032	Default	WEAR RING: 1.500 BORE X 1.250 I.D., PISTON	HYD FITTING		1
9	339169	Default	WIPER RING: 750 ROD, AN TYPE - 959-05	HYD FITTING		1
10	339170	Default	X-RING: 1.000" OD - 750" ID: XR-210BN90	HYD FITTING		1

TITLE: **ALUMINUM HYDRAULIC ACTUATOR, 1 1/2" BORE - 24" STROKE**

UNLESS OTHERWISE SPECIFIED:
 1. ALL DIMENSIONS ARE IN INCHES BREAK SHARP EDGES & DEBURR
 2. MATERIAL & FINISH TO BE AS NOTED OR SUBSTITUTED WITH AN APPROVED AND TESTED EQUIVALENT

TOLERANCES (EXCEPT AS NOTED)
 DECIMAL: .X ± .1
 .XX ± .03
 .XXX ± .005

FILLETS R.015 FINISH 125

THIRD ANGLE PROJECTION

FRACATIONAL ±1/16
 ANGULAR ±1°

LIPPERT COMPONENTS
 2703 COLLEGE AVE
 GOSHEN, IN 46528

THE INFORMATION CONTAINED IN THIS DRAWING IS THE SOLE PROPERTY OF LIPPERT COMPONENTS, INC. ANY REPRODUCTION IN PART OR AS A WHOLE WITHOUT THE WRITTEN PERMISSION OF LIPPERT COMPONENTS, INC. IS PROHIBITED.

DWG. NO. **339031** SIZE **B** DATE: 11/11/2013 REV. **D**
 SCALE: 1:8

ENG RAW DWR RAW SHEET 1 OF 1