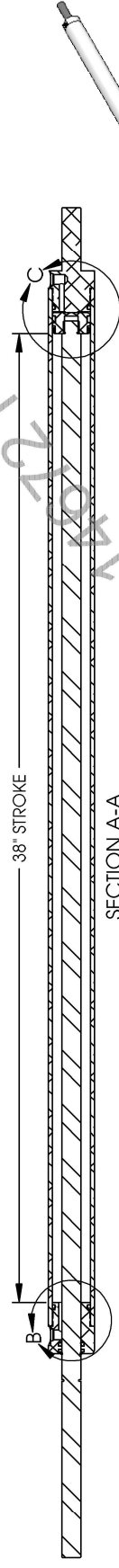


NOTES:

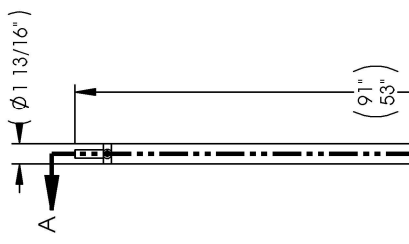
1. 3/4 - 10 NUTS REQUIRED
2. SAE #4 PORT FITTINGS REQUIRED
3. MAX CAPACITY: 4500 LBS
4. CAP/GLAND CRIMP RATING: 7500 PSI

REVISION HISTORY			
REV	DATE	DESCRIPTION	ECN
A	9/19/2013	RELEASED TO PRODUCTION	
B	2/24/2014	REMOVED 339168, UPDATED PARTS	
C	6/20/2014	UPDATED PRINT PER ECN	ECN-SP-DE-12544

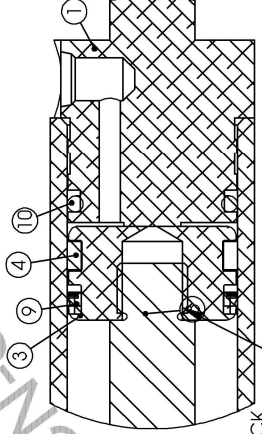
DWR	APVD
RAW	BC
RAW	RAW
RAW	MD



SECTION A-A  
SCALE 1 : 4



DETAIL B  
SCALE 1 : 1



DETAIL C  
SCALE 1 : 1

- FULLY COAT THREADS:  
 1. APPLY 7649 PRIMER  
 2. APPLY 263 THREAD LOCK  
 3. SCREW ON PISTON TIGHT WITHIN 1 MINUTE OF THREAD LOCK  
 4. ALLOW THREAD LOCK TO CURE 12 HOURS PRIOR TO APPLYING HYDRAULIC FLUID

ITEM	PART NO	CONFIG	DESCRIPTION	NAME	GA	QTY
1	339026	Default	ACTUATOR CAP - 1 1/2" BORE	HYD CYLINDER		
2	339027	Default	ACTUATOR GLAND - 1 1/2" BORE	HYD CYLINDER		
3	339028	Default	ACTUATOR BODY - 1 1/2" BORE	HYD CYLINDER		
4	339029	Default	ACTUATOR ROD - 1 1/2" BORE	HYD CYLINDER		
5	339165	Default	WIPER RING - 750 ROD - AN TYPE - 08245	HYD FITTING		
6	339170	Default	X-RING - 1.000" O.D. - 750 ID - X2-2108A90	HYD FITTING		
7	342328	Default	ACTUATOR BODY - 1 1/2" BORE - 38" STROKE - BLACK	HYD CYLINDER		
8	342330	Default	ACTUATOR ROD - 750 O.D. - 1 1/2" BORE - 38" STROKE	HYD CYLINDER		
9	335510	Default	PISTON SEAL - 1.500 O.D. - 1.25	HYD FITTING		
10	335511	Default	O-RING - 1.500 O.D. - 1.25	HYD FITTING		

ALUMINUM HYDRAULIC ACTUATOR, 1 1/2" BORE - 38" STROKE

UPPER COMPONENTS	
TOLERANCES (EXCEPT AS NOTED)	
DECIMAL	.X ±.1
FRACTIONAL	XXX ±.005
ANGULAR	±1/16
THIRD ANGLE PROJECTION	



DWG. NO.	SIZE	DATE	REV.
342328	B	11/11/2013	C
ENG	RAW	DWR	RAW
SHEET	1	OF	1