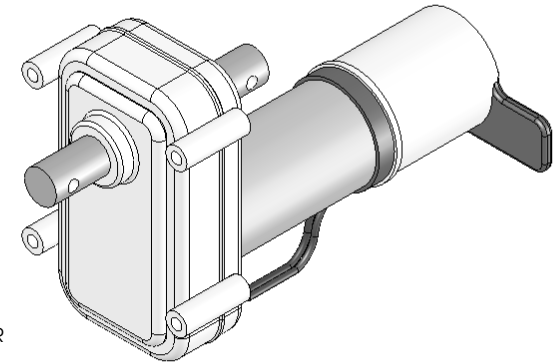
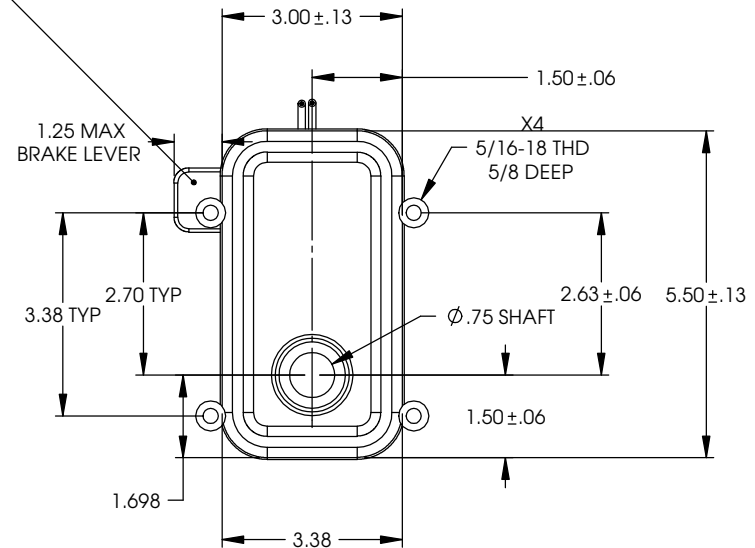
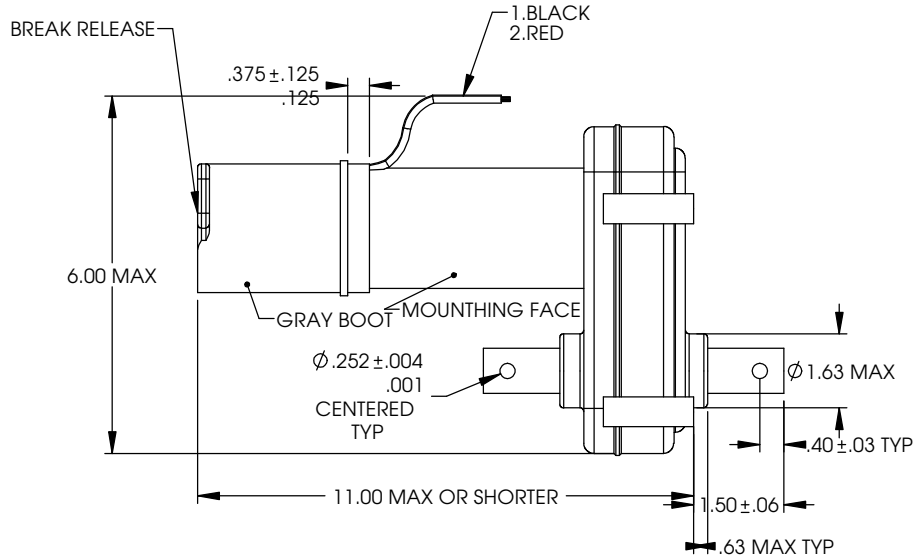


| REVISION HISTORY |           |                        |                 |     |      |
|------------------|-----------|------------------------|-----------------|-----|------|
| REV              | DATE      | DESCRIPTION            | ECN             | DWR | APVD |
| A                | 5/18/2015 | RELEASED TO PRODUCTION | ECN-SP-NP-20144 | SKW | MS   |



MANUAL BRAKE RELEASE  
W/ DETENT HANDLE & AN  
ADDITIONAL LOCKING LEVER  
ENCLOSED IN A RUBBER BOOK COVER



NOTES:

- 12V DC PERMANENT MAGNET PARALLEL SHAFT OR RIGHT ANGLE GEARMOTOR  
DUTY CYCLE: INTERMITTEN
- MOUNTING METHOD : FACE MOUNT SEE PATER ABOVE  
SEALING CONDITION : FULLY SEALED AGAINST SPLASH  
LEADS: 14 GAUGE X 12" LONG USING UL OR CSA LISTED 125°C WIRE  
SHAFT ROTATION: RED WIRE LEAD +12V CQ ROTATION VIEW FROM FACE MOUNT  
DATE STAMP UNIT BY SUPPLIER
- OPERATION CONDITIONS  
400 IN-LBS @ 17 AMPS MAX AND 10 RPMS MIN  
MOTOR BRAKE TO DISENGAGE AT 9-14 VDC WITH MANUAL OVERRIDE AND LOCKING LEVER  
500-IN LBS MIN OF HOLDING TORQUE ON OUTPUT SHAFT AND MUST BE ABLE TO BACK DRIVE (MANUALLY OVERRIDE)  
OUTPUT SHAFT WITH 360 IN-LBS MAX  
STALL CURRENT 40 AMPS MIN
- INTERNAL SPECIFICATIONS  
TENV CONFIGURATION  
SLEEVE BEARING MOTOR & GEAR UNIT  
INTERNAL BRUSHES  
GREASE LUBRICATION  
TEST SPECIFICATIONS  
SALT SPRAY TEST PER STM B-117 FOR 216 HOURS

|                     |          |
|---------------------|----------|
| REFERENCE NUMBER:   | 130-1146 |
| MATERIAL TYPE:      |          |
| SURFACE QUALITY:    |          |
| DECIMAL:            |          |
| FINISH GOOD WEIGHT: |          |
| BLANK WEIGHT:       |          |
| BLANK SIZE:         | X        |

| TITLE: GEARMOTOR DUAL SHAFT MT W/O PIN-B (130-1146)   |             |   |  |   |                |
|---|-------------|---|--|---|----------------|
| UNLESS OTHERWISE SPECIFIED<br>1. ALL DIMENSIONS ARE IN INCHES BREAK SHARP EDGES & DEBURR<br>2. MATERIAL & FINISH TO BE AS NOTED OR SUBSTITUTED WITH AN APPROVED AND TESTED EQUIVALENT |             | TOLERANCES (EXCEPT AS NOTED)<br>DECIMAL .XX ±.010<br>.XXX ±.005 |  | THE INFORMATION CONTAINED IN THIS DRAWING IS THE SOLE PROPERTY OF LIPPERT COMPONENTS, INC. ANY REPRODUCTION IN PART OR AS A WHOLE WITHOUT THE WRITTEN PERMISSION OF LIPPERT COMPONENTS, INC. IS PROHIBITED. |                |
| FILLETS R.015   | FINISH 125/ | DECIMAL .XX ±.010<br>.XXX ±.005                                 |  | DWG. NO.  | REV.           |
| THIRD ANGLE PROJECTION  |             | FRACTIONAL ±1/16  |  | 368888  | B              |
| ANGULAR ±1°   |             |   |  | DATE: 05/18/2015  |                |
|   |             |   |  | SCALE: 1:4  |                |
|   |             |   |  | DRAWN BY SKW  | CHECKED BY SKW |
|   |             |   |  | APPROVED BY   | SHEET 1 OF 1   |