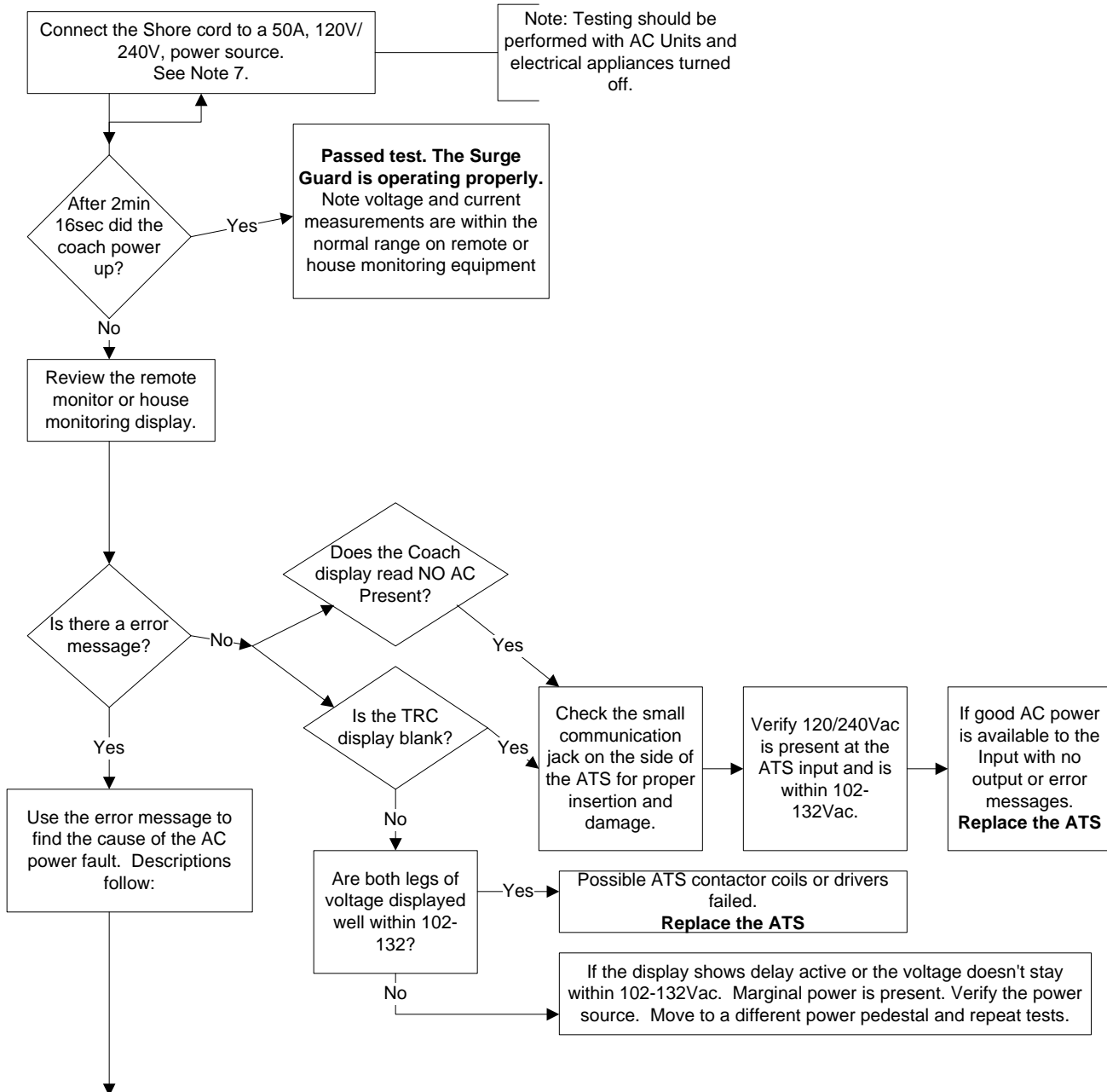


Surge Guard Troubleshooting Guide

P/N 40240



- 1. Low Voltage** - If the input voltage drops below 102Vac for more than 8 sec. the power will be removed protecting your electronic equipment. This condition may be caused by overloading the parks power. Try reducing your loads.
- 2. High Voltage** - If the input voltage increases above 132Vac for more than 8sec, power will be removed.
- 3. Line1, Line2 or Neutral open** - Check all input wiring to the ATS. Check Shr cord. Check wiring on Generator. Replace Receptacle on pedestal. Replace adapter if reducing down to 120V,30A service.
- 4. Open Ground** - Check input wiring to the ATS. Check wiring on Generator. Replace Receptacle on pedestal. Replace adapter if reducing down to 120V,30A service.
- 5. Reverse Polarity** - Check wiring at pedestal.
- 6. Check Surge** - Fuses inside unit have opened. Return ATS to TRC for service. The ATS may be used until service can be arranged.
- 7. Note:** The Surge Guard ATS will also operate properly using a suitable 120V, 30A adapter.

For additional technical support call 800-780-4324 ext 311