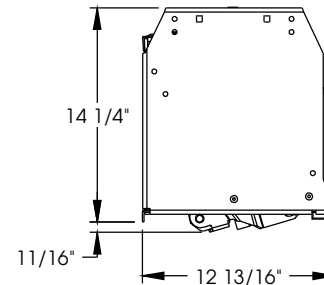
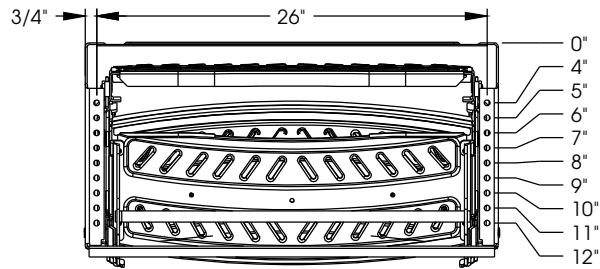
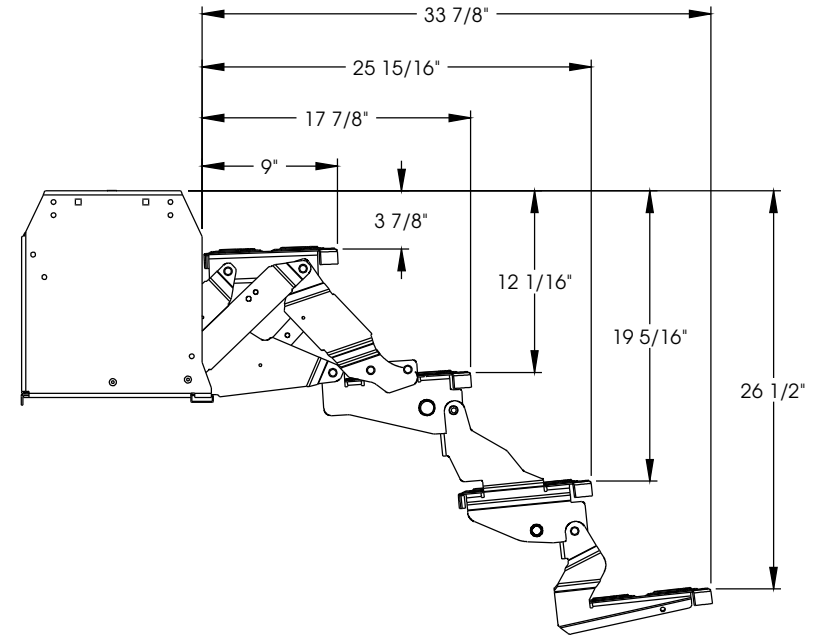
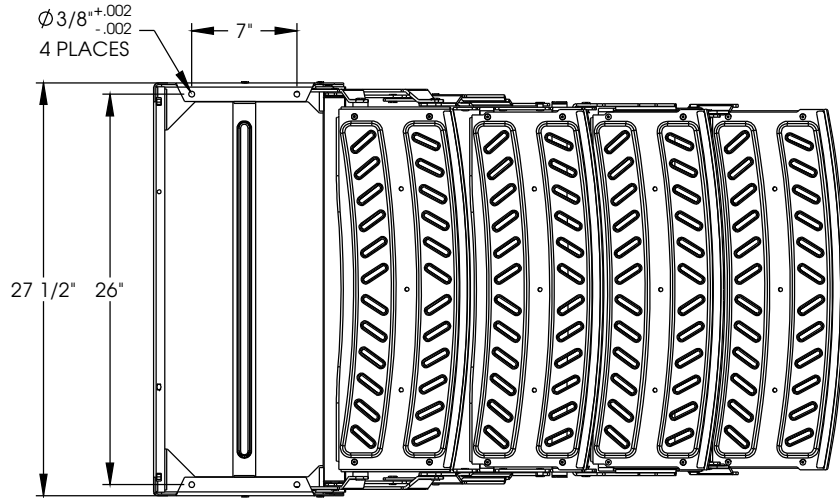


NOTES:

1. ALL DIMENSIONS ARE REFERENCE
2. HICKORY SPRINGS (HSM) #: X053994240R
3. TOP STRAP MATERIAL THICKNESS .093 PER VENDOR PRINT 45953205C 1

REVISION HISTORY					
REV	DATE	DESCRIPTION	ECN	DWR	APVD
A	12/16/2014	RELEASE TO PRODUCTION	ECN-SP-NP-19223	KSW	DC
B	12/23/2014	COPIED OVER NOTES FROM 235458	ECN-SP-DE-13868	DCR	DC



REFERENCE NUMBER:	
MATERIAL TYPE:	
SURFACE QUALITY:	
DECIMAL:	
FINISH GOOD WEIGHT:	67.39
BLANK WEIGHT:	
BLANK SIZE:	X

TITLE: STEP, 24" RADIUS QUAD 8 VII						
UNLESS OTHERWISE SPECIFIED 1. ALL DIMENSIONS ARE IN INCHES BREAK SHARP EDGES & DEBURR 2. MATERIAL & FINISH TO BE AS NOTED OR SUBSTITUTED WITH AN APPROVED AND TESTED EQUIVALENT			TOLERANCES (EXCEPT AS NOTED) DECIMAL .X ±1 .XX ±0.10 .XXX ±0.05			
FILLETS R.015		FINISH 125/		THE INFORMATION CONTAINED IN THIS DRAWING IS THE SOLE PROPERTY OF LIPPERT COMPONENTS, INC. ANY REPRODUCTION IN PART OR AS A WHOLE WITHOUT THE WRITTEN PERMISSION OF LIPPERT COMPONENTS, INC. IS PROHIBITED.		
THIRD ANGLE PROJECTION			FRACTIONAL ±1/16		ANGULAR ±1°	
DRAWN BY KSW		CHECKED BY KSW		APPROVED BY		
DWG. NO. 367090		SIZE B		DATE: 12/16/2014		
				SCALE: 1:8		
				REV. B		
				SHEET 1 OF 1		