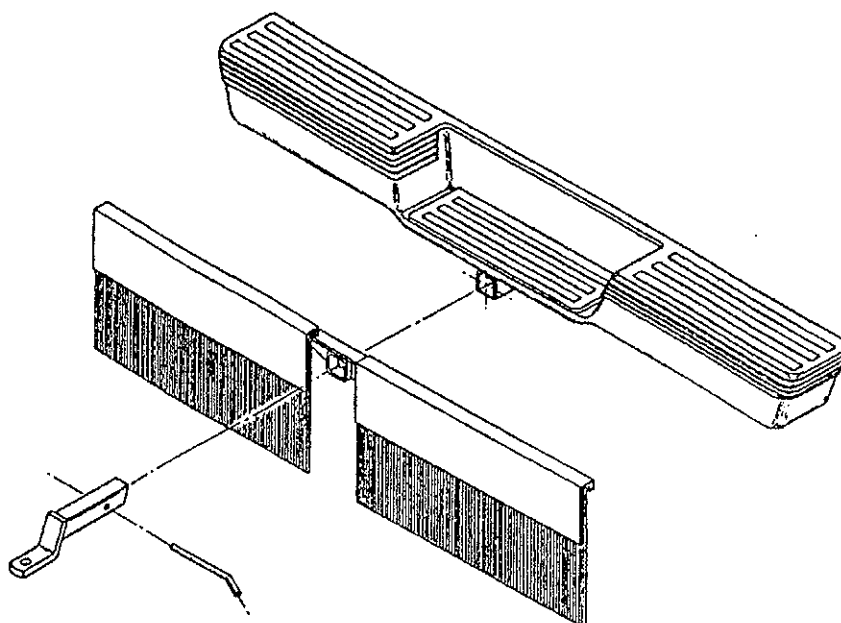


Receiver Hitch Mount - Protective Brush Shields

Splash Stop



16" Hang Down Length

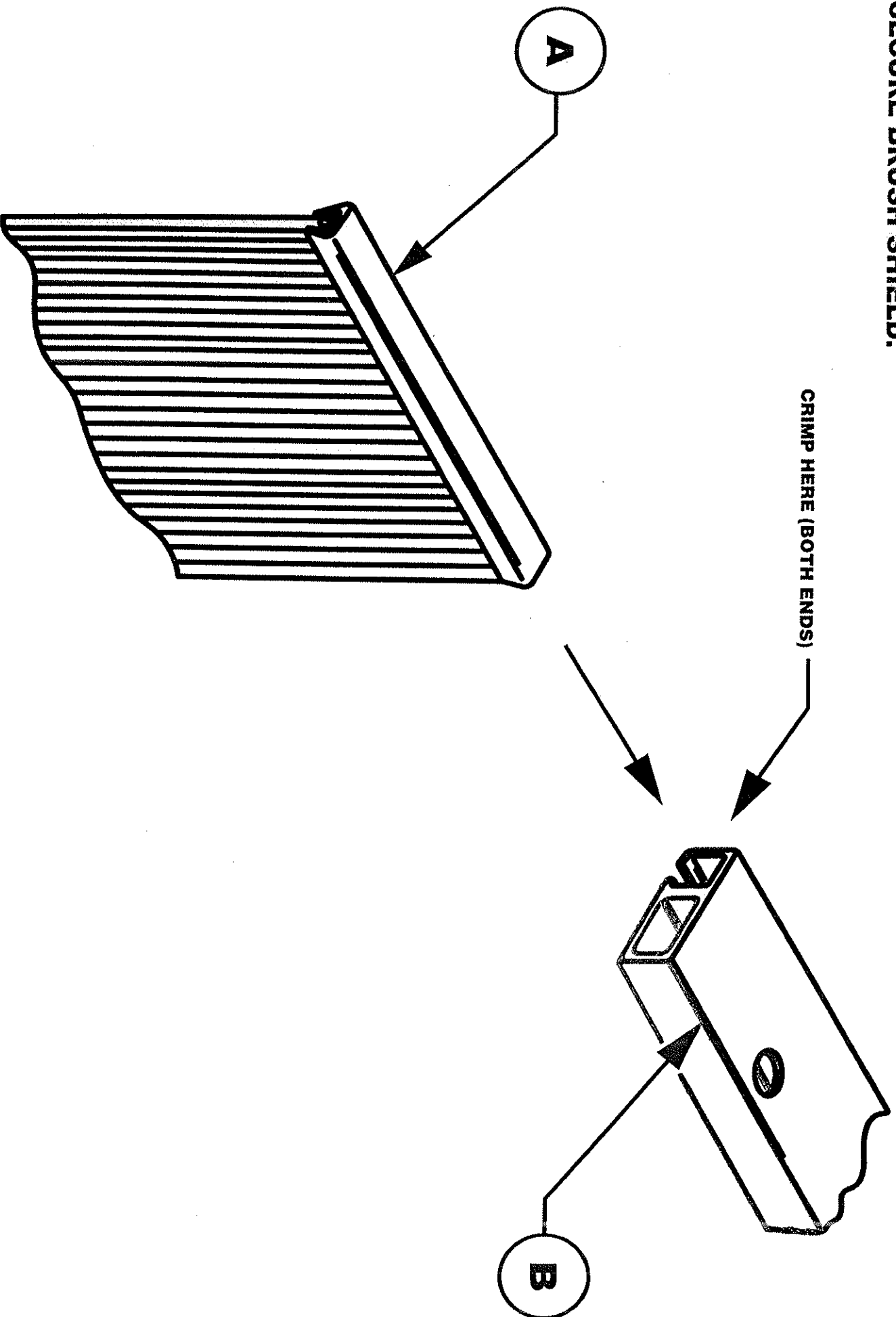
P/N 341516-3009796

Kit Consists of:

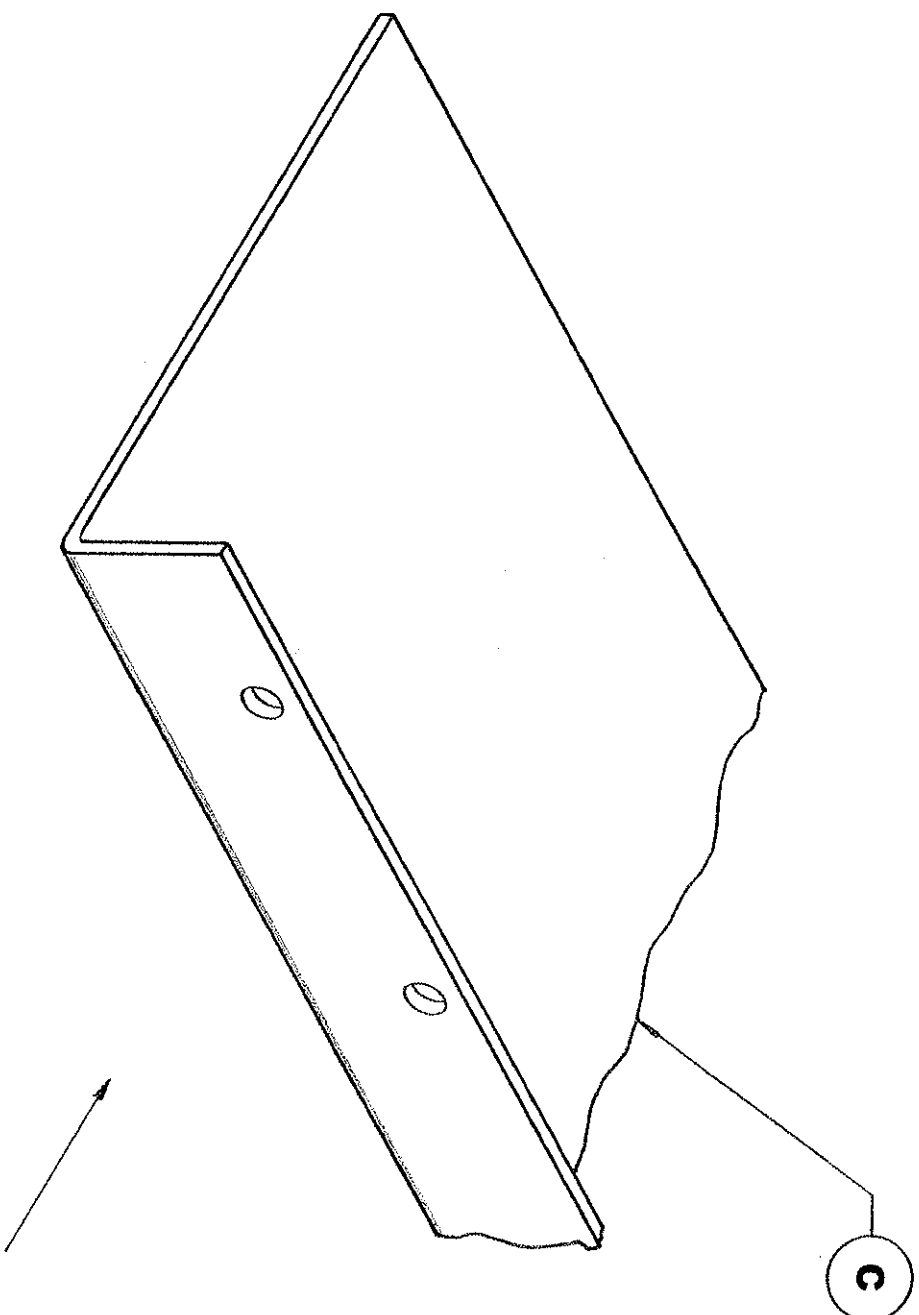
- Two brush sets *3 1/2" x 16" HANG DOWN*
- Two aluminum strip holders
- Two steel support tubes
- Two plastic brush supports
- One hitch bracket
- One hardware kit
- Easy to follow installation instructions

Master packed six per box.

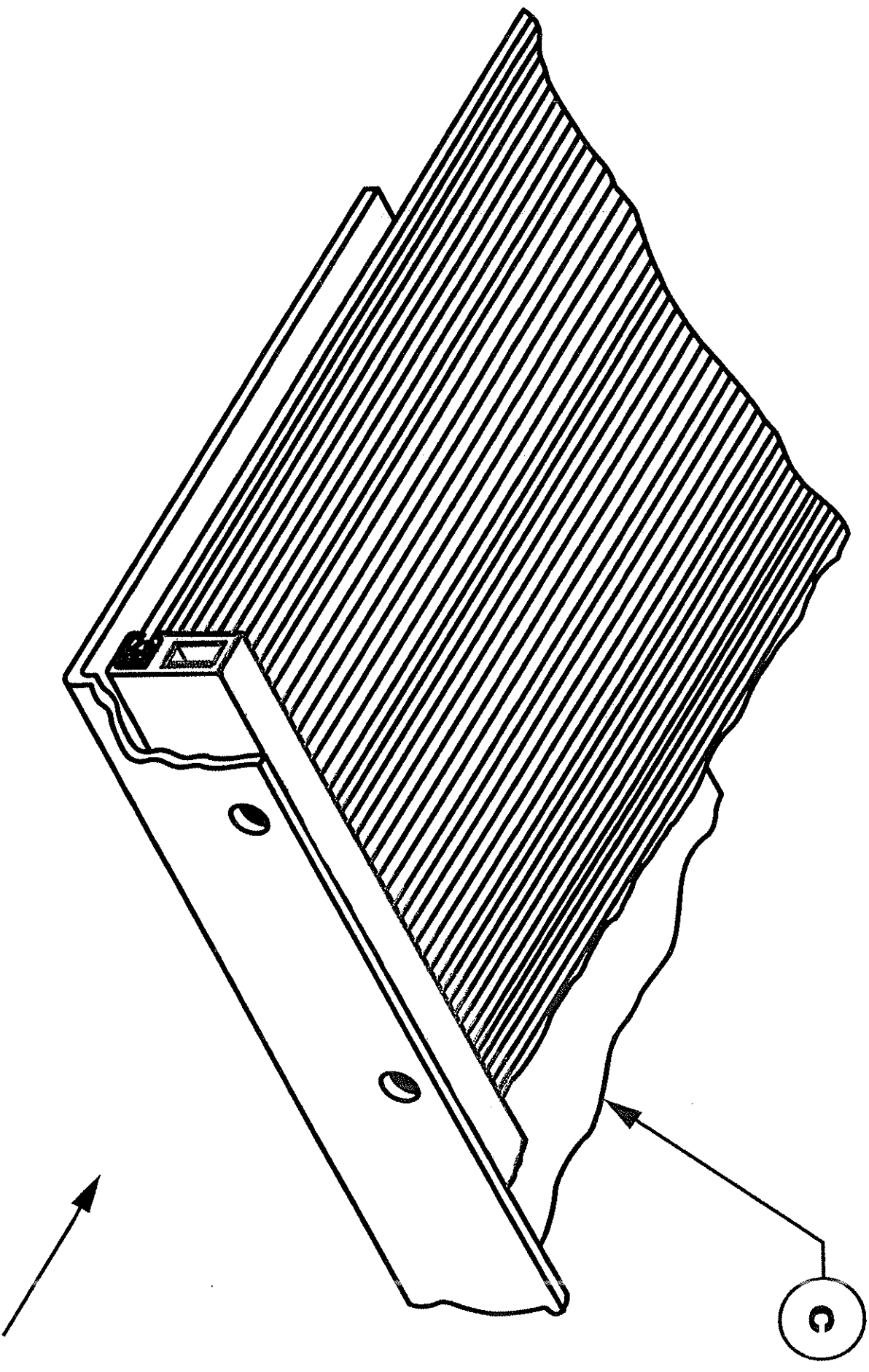
1) SLIDE BRUSH SHIELD (A) INTO ALUMINUM BRUSH SHIELD HOLDER (B) AND CRIMP ENDS OF HOLDER TO SECURE BRUSH SHIELD.



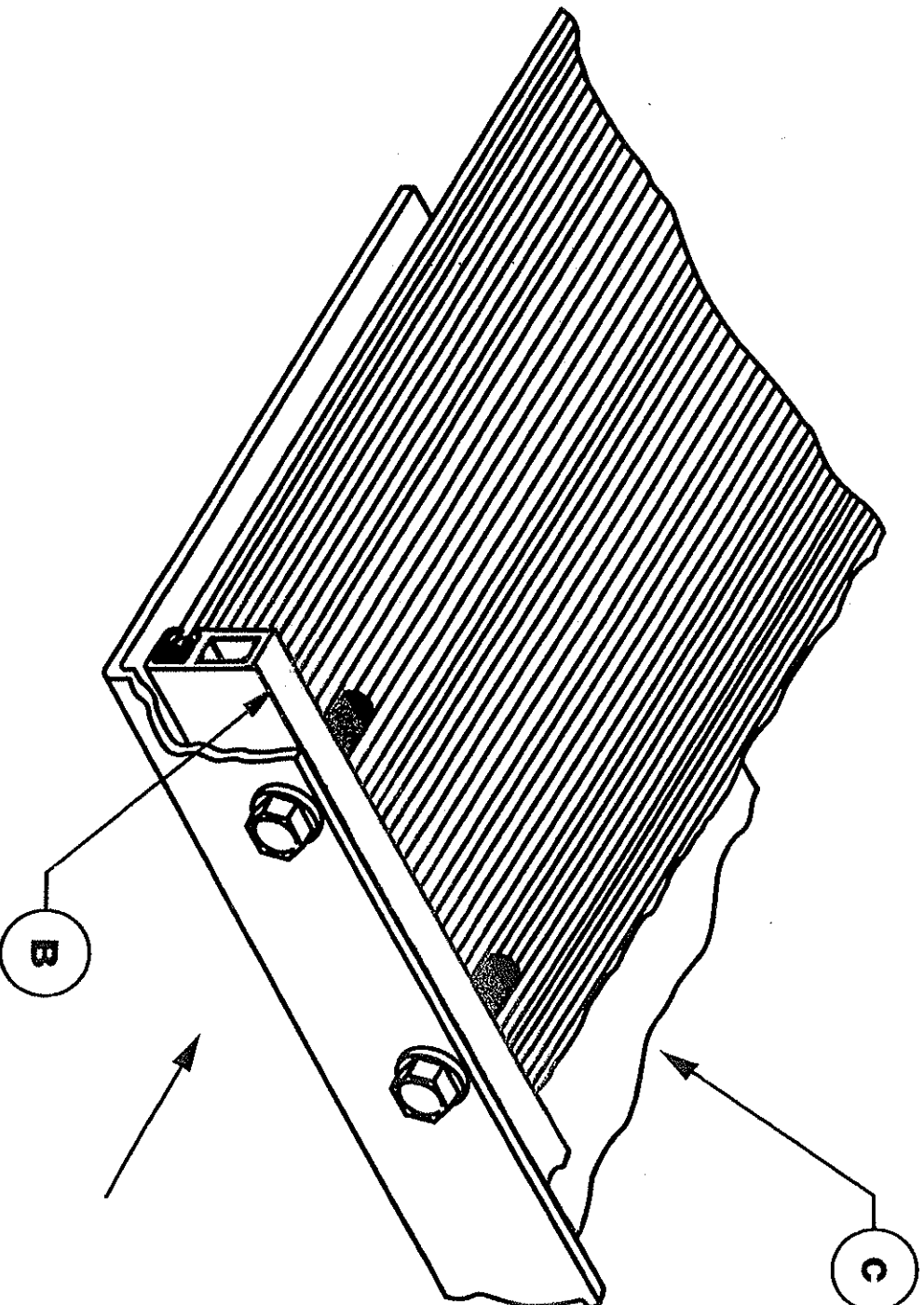
2) PLACE PLASTIC SHIELD SUPPORT (C) ON FLAT SURFACE (AS SHOWN).



3) PLACE BRUSH SHIELD/ ALUMINUM HOLDER ASSEMBLY (FROM STEP 1) ON PLASTIC SHIELD SUPPORT (C).

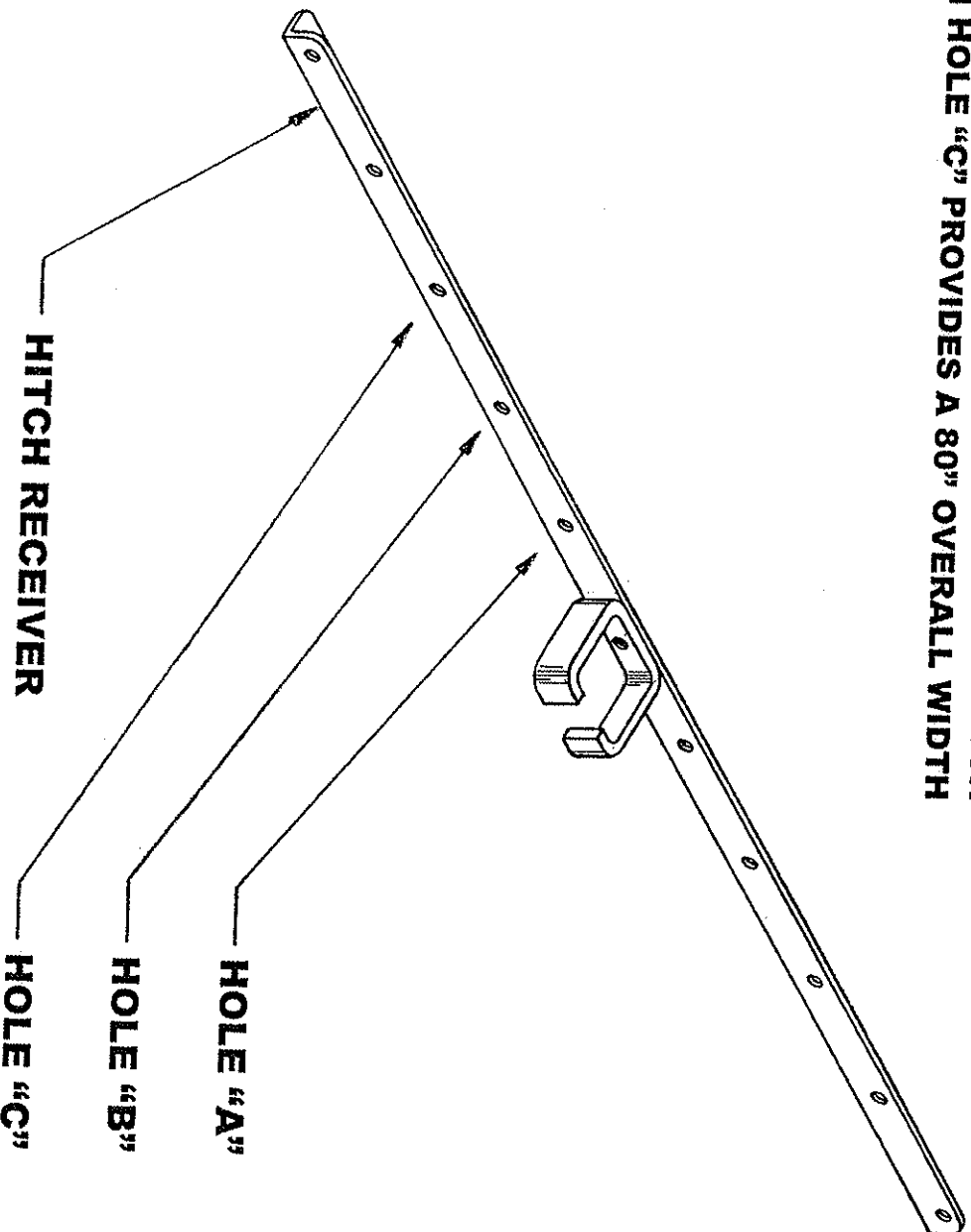


**4) ALIGN HOLES AND INSERT 1 EA FLAT WASHER
ONTO BOLT AND INSTALL 9 BOLTS W/ WASHERS,
THRU HOLES OF ALL ITEMS (DO NOT INSTALL LOCK
NUTS AT THIS TIME).**



5) DETERMINE THE OVERALL WIDTH FOR THE REQUIRED APPLICATION AND INSTALL HITCH RECEIVER (D), WITH HOLES PROPERLY ALIGNED, AS FOLLOWS:

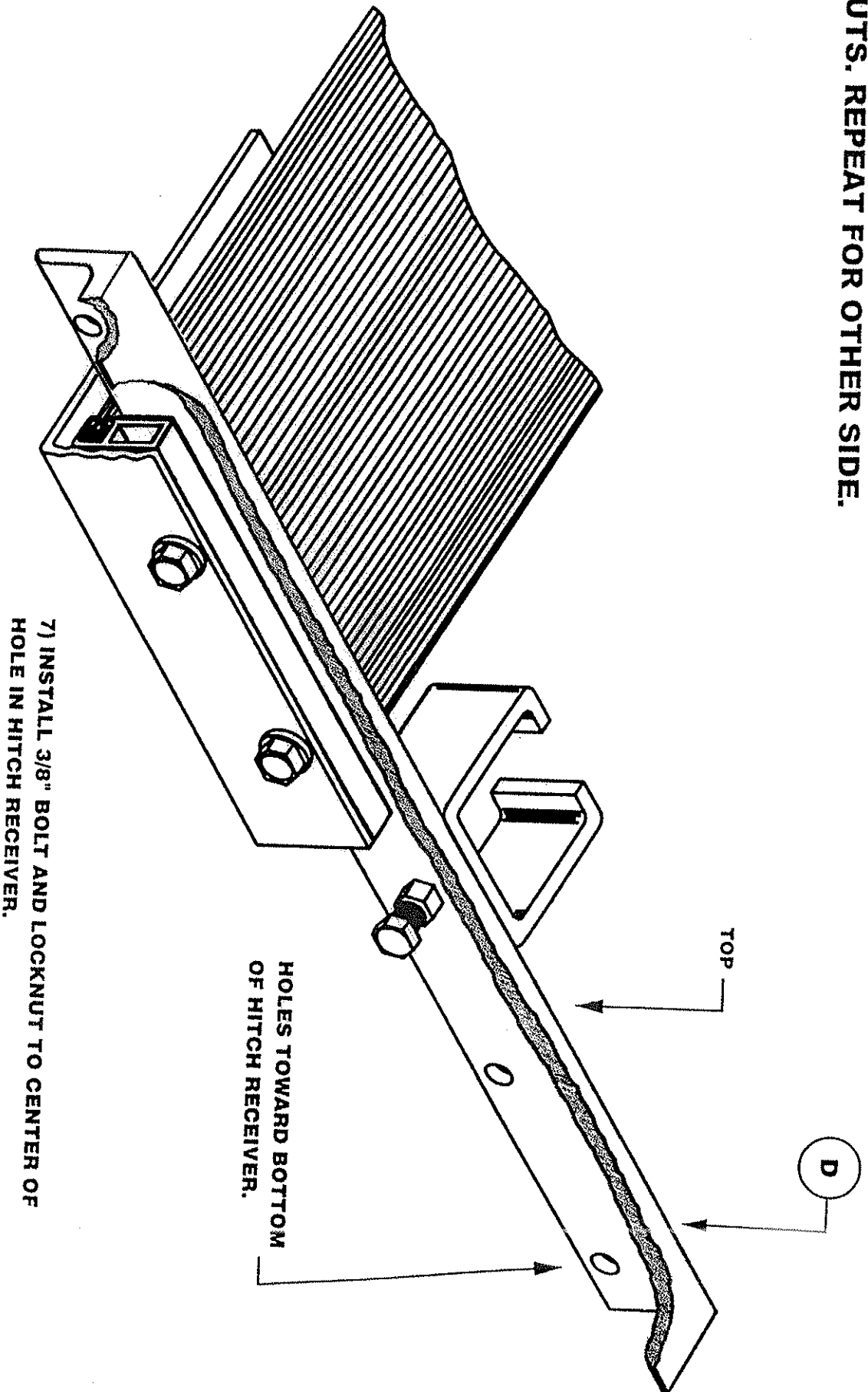
STARTING WITH HOLE "A" PROVIDES A 66" OVERALL WIDTH
STARTING WITH HOLE "B" PROVIDES A 73" OVERALL WIDTH
STARTING WITH HOLE "C" PROVIDES A 80" OVERALL WIDTH

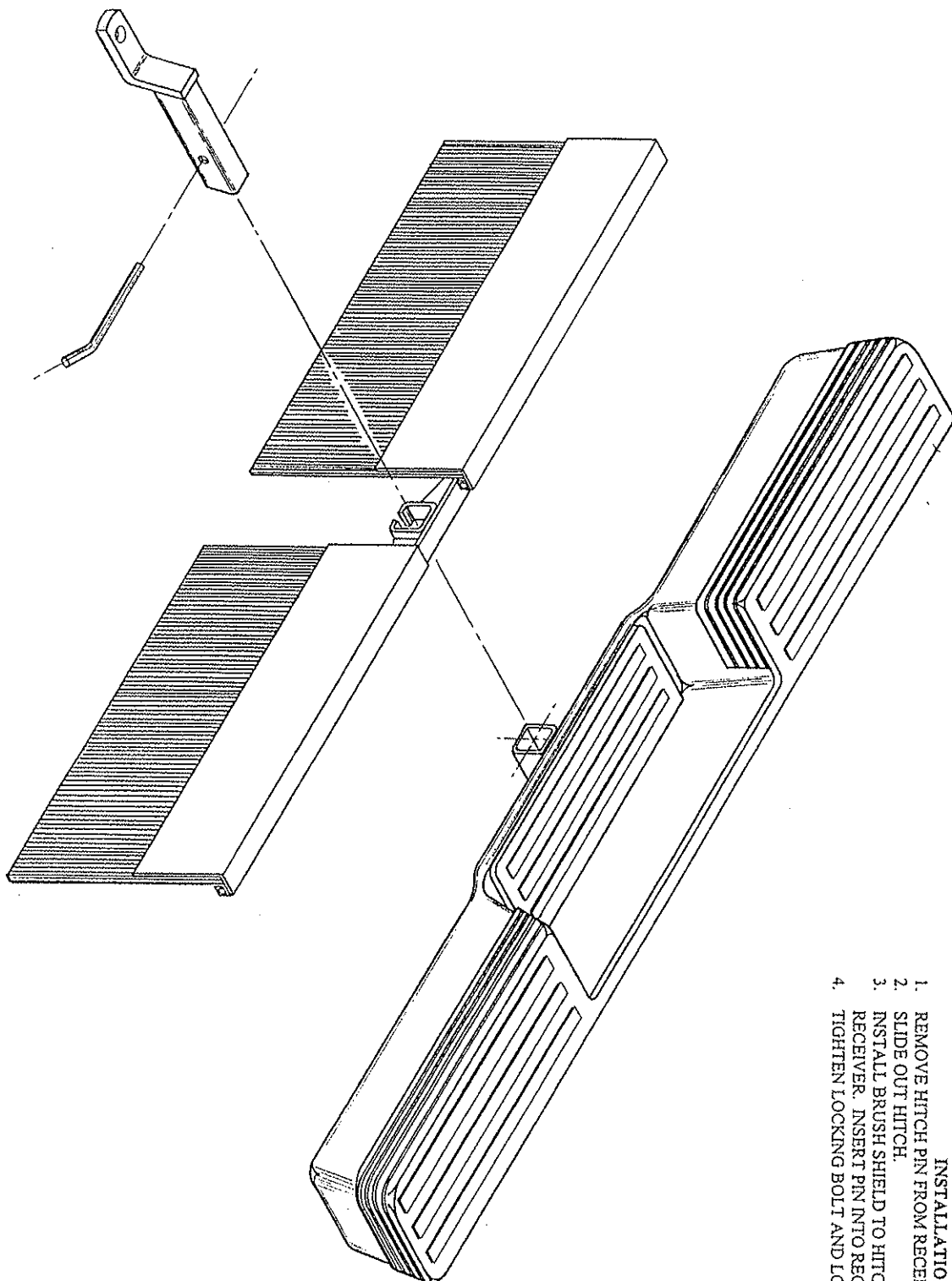


2 Brackets - each are 31 1/2"
They are mounted on
the Bracket & extends
out both ends to reach
the required overall
length.
The bush first slides
into an
extrusion to
give added
Support

D

6) AFTER DETERMINING THE APPROPRIATE WIDTH AND INSTALLING HITCH RECEIVER (D), INSTALL LOCKNUTS (WASHER SIDE TOWARD RECEIVER BRACKET) AND TIGHTEN. DO NOT OVER TORQUE LOCKNUTS. REPEAT FOR OTHER SIDE.





INSTALLATION INSTRUCTIONS

1. REMOVE HITCH PIN FROM RECEIVER.
2. SLIDE OUT HITCH.
3. INSTALL BRUSH SHIELD TO HITCH AND REINSTALL HITCH TO RECEIVER. INSERT PIN INTO RECEIVER AND SECURE SAFETY CLIP.
4. TIGHTEN LOCKING BOLT AND LOCKING NUT TO HITCH.