



TANKLESS WATER HEATER Models GSWH-1/1M

INSTALLATION MANUAL ADDENDUM for after Market Installations

REPLACEMENT OF AN ATWOOD 6 GA. UNIT DOOR/FLANGE ASSEMBLY - Part #1GWHDA6

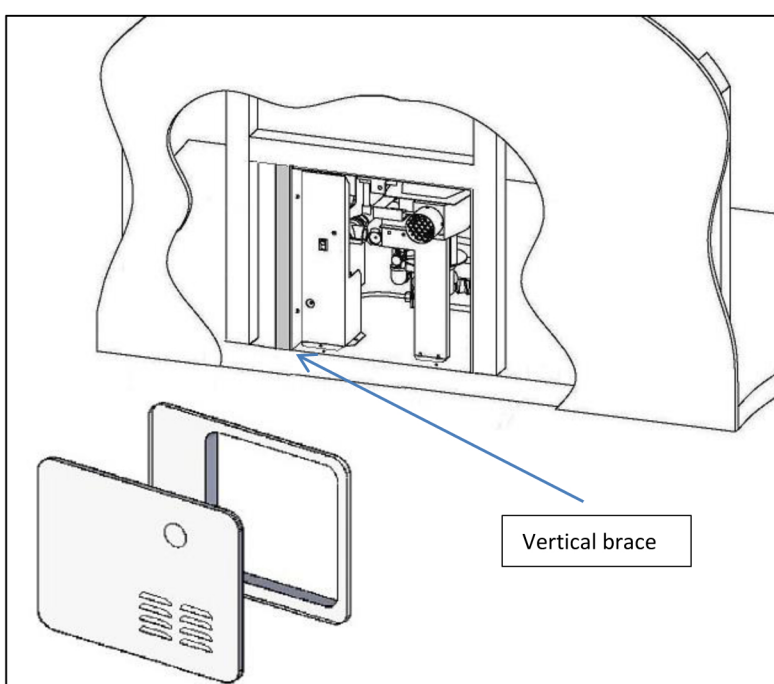


Fig. 1

The existing cut out for a 6 gal Atwood water heater measures 16 1/4" (W) by 12 5/8" (H).

The cut out needed for your GSWH-1 is only 12 3/4" by 12 3/4" and its flange MUST be supported on all sides by a wooden frame so that it may be mounted rigidly with #8 3/4" flat head screws.

The flange will fit vertically into the existing opening, but a horizontal gap of 3 1/2" will be left between the new flange and the side of the opening.

A properly cut piece of 2" by 2" must be added as a vertical brace located at 12 3/4" from the right edge of the cut out. (See Fig. 1)

Please refer to the Owner's Manual for information on how to complete the installation.

REPLACEMENT OF AN ATWOOD OR A SUBURBAN 10 GA. UNIT DOOR/FLANGE ASSEMBLY - Part #1GWHDA10

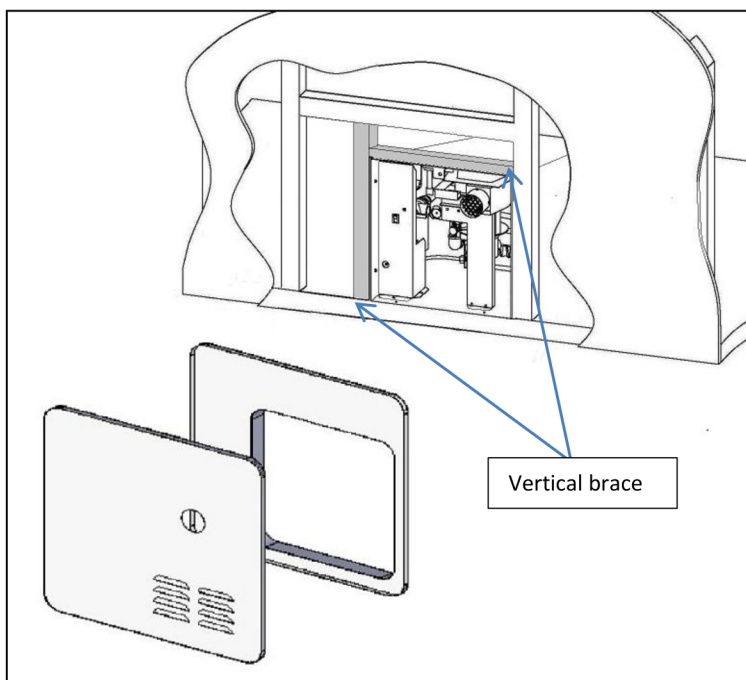


Fig.2

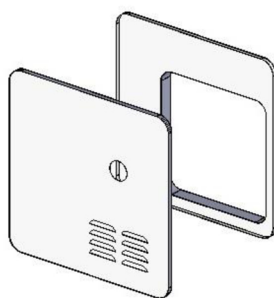
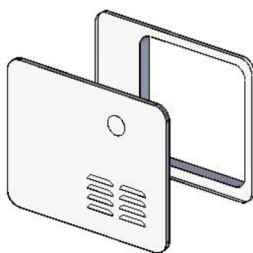
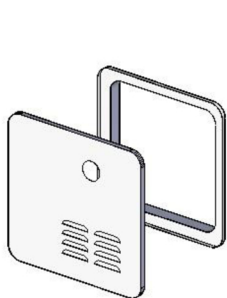
The existing cut out for a 10 gal Atwood water heater measures 16 1/4" by 15 3/4" and for a 10 gal Suburban unit measures 16 1/4" by 16 1/4" .

The cut out needed for your GSWH-1 is only 12 3/4" by 12 3/4" and its flange MUST be supported on all sides by a wooden frame so that it may be mounted rigidly with #8 3/4" flat head screws.

A horizontal gap of 3 1/2" and a vertical gap of 3" will be left between the new flange and the sides of the opening.

Two properly cut piece of 2" by 2" must be added as a vertical brace located at 12 3/4" from the right edge and 12 3/4" from the bottom edge of the cut out. (See Fig. 2)

Please refer to the Owner's Manual for information on how to complete the installation.



DOOR/FLANGE ASSEMBLY
Part #1GWHDA6 - POLAR WHITE
For new installations.
Also applicable conversion door for the Suburban 6 gallon water heater.

DOOR/FLANGE ASSEMBLY CONVERSION
Part #1GWHDA6 – POLAR WHITE
Applicable conversion door for the Atwood 6 gallon water heater.

DOOR/FLANGE ASSEMBLY CONVERSION
Part #1GWHDA10 – POLAR WHITE
Applicable conversion door for the Atwood or Suburban 10 gallon water heater.