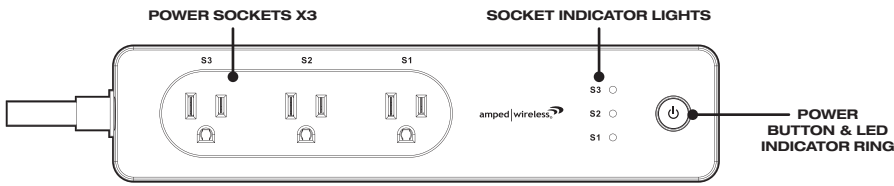


# SMART WI-FI POWER STRIP

USER'S GUIDE FOR MODEL AWPS148W



## ELECTRICAL RATINGS

Do not exceed specified electrical ratings.

Max Single Jack Output: 125V 10A 1250W

Max Total Output: AC 125V 15A 1875W



Smart Life



ANDROID OR APPLE

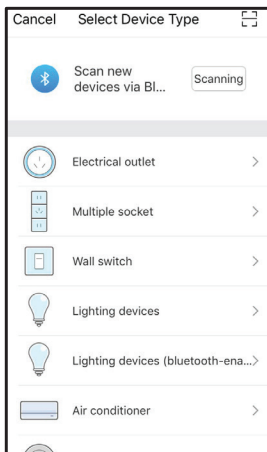
## GETTING STARTED

- Download the app by scanning the QR (shown right) with your Android or Apple device, or search "Smart Life" in the Google Play Store or Apple App Store. **If this is your first time using the app, you will need to create a user profile and password.**
- Plug the Smart Strip into a power socket, the LED ring and socket indicators will be off.
- Press the **Power button**, the socket indicators will turn on but the LED ring will remain off.
- Press and hold the **Power button** until the LED ring begins quickly flashing blue (socket indicators will be off).
- Perform the **Standard Smart Life Setup** (below). When the connection is complete the LED ring will turn solid blue and remain on (even if you have turned the strip off from the app).
- If the connection has failed**, press and hold the Power button again until the LED ring begins slowly flashing blue, then perform the **AP Mode Smart Life Setup** (back page).

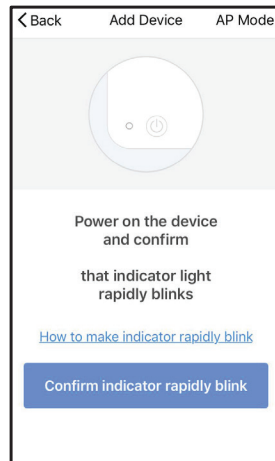
Smart Strip Status	LED Indicator Ring
Power ON, Wi-Fi Connected	Solid Blue
Power ON, Wi-Fi Not Connected	No Light (socket lights on)
Power OFF	No Light
Wi-Fi Connecting (Standard Mode)	Quick Flashing Blue
Wi-Fi Connecting (AP Mode)	Slow Flashing Blue

## SMART STRIP SETUP: STANDARD MODE

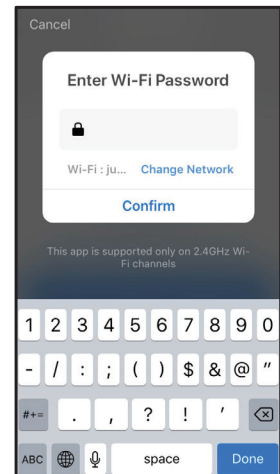
- Open the app (you need to login to your profile, if you haven't already). Tap **+** in the top corner.
- Select **Multiple Socket** in the menu and follow the prompts to connect the AWPS148 Smart Strip to your network. You will need to enter your Wi-Fi password at this time.
- The screen will display the connection status. When it reaches 100%, setup is complete and the Smart Strip is ready to use. You can rename the strip now, or click **Done** to complete setup.
- The Smart Strip will appear in the **Devices** menu. Select it to manage settings and power it on.



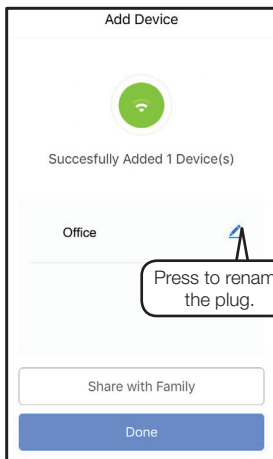
SELECT MULTIPLE SOCKET FROM THE LIST OF DEVICES.



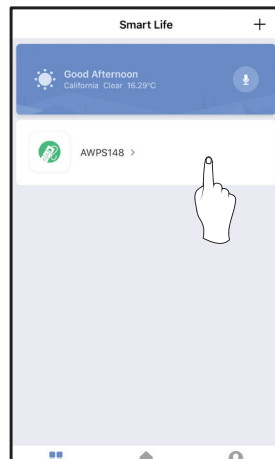
PRESS AND HOLD THE POWER BUTTON. WHEN THE BLUE RING IS QUICKLY FLASHING BLUE, PRESS CONFIRM.



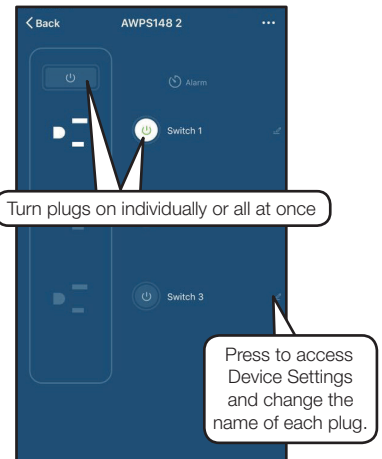
ENTER WI-FI PASSWORD.



AFTER SUCCESSFULLY CONNECTING, THE INDICATOR RING WILL TURN SOLID BLUE AND THE PLUG IS READY TO USE.



FROM THE DEVICE MENU, SELECT THE SMART STRIP TO ACCESS SETTINGS AND OPTIONS.



THIS IS THE CONTROL SCREEN. HERE YOU CAN TURN ON THE ENTIRE POWER STRIP OR INDIVIDUAL SOCKETS. YOU CAN ALSO SET TIMERS AND SCHEDULES, AND ADJUST SETTINGS.



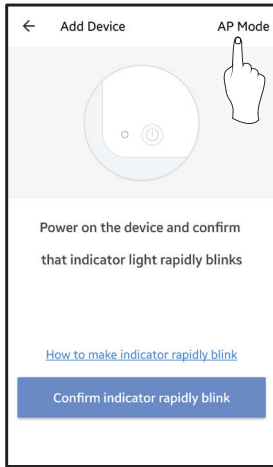
# SMART WI-FI POWER STRIP

USER'S GUIDE FOR MODEL AWPS148W

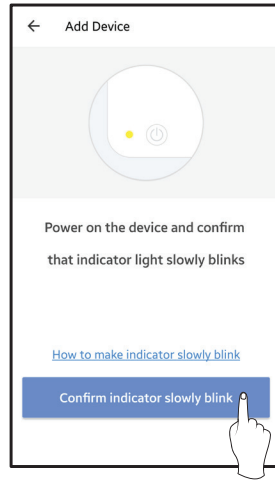


## SMART STRIP SETUP: AP MODE

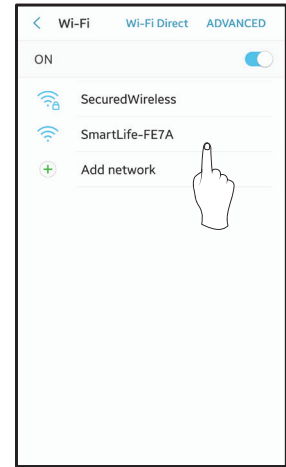
If the app fails to automatically connect to the Smart Strip, you can use AP Mode to connect from your phone's Wi-Fi settings menu. **Apple products will ask you to exit the app and go to Settings > Wi-Fi, Android devices (as below) will do this automatically.** After the connection is established, proceed as normal to finalize and begin using the Smart Strip.



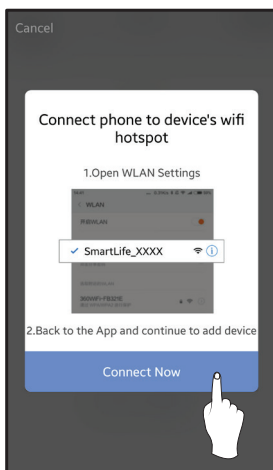
SELECT AP MODE.



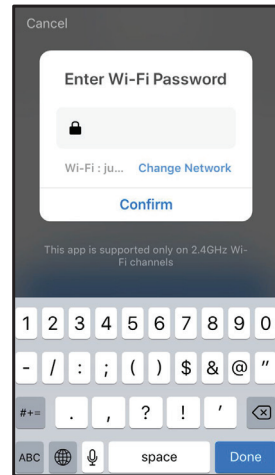
PRESS AND HOLD THE POWER BUTTON ON THE STRIP FOR 5 SECONDS AND CONFIRM THE INDICATOR RING IS SLOWLY FLASHING BLUE, THEN PRESS CONFIRM.



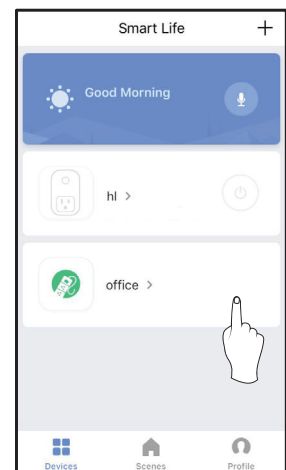
SELECT THE SMART STRIP. WHEN CONNECTED, RETURN TO THE APP. NOTE THAT IT MAY TAKE A FEW MOMENTS TO CONNECT.



PRESS CONNECT NOW TO PROCEED TO YOUR ANDROID PHONE'S WI-FI SETTINGS MENU. APPLE IOS USERS, EXIT THE APP AND MANUALLY ACCESS YOUR WI-FI SETTINGS MENU.



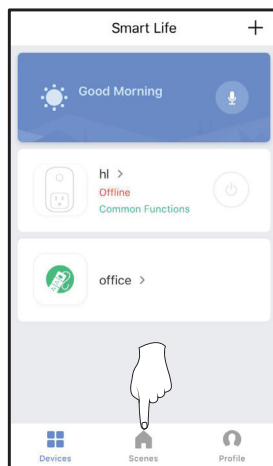
ENTER WI-FI PASSWORD AND CONFIRM.



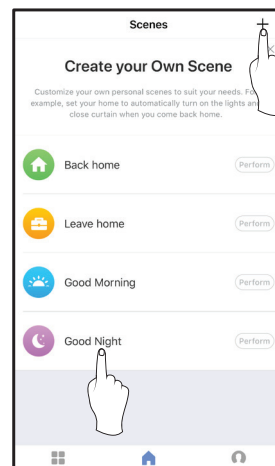
WHEN SUCCESSFULLY ADDED, YOU MAY BEGIN USING THE SMART STRIP.

## SETTING UP SCENES IN THE SMART LIFE APP

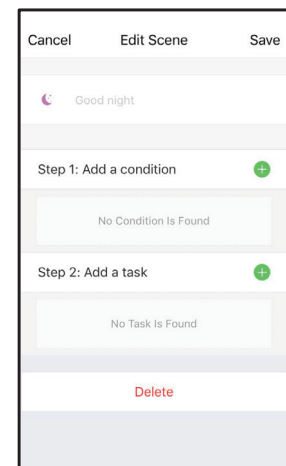
With Scenes, you can set your plug to automatically activate under a given set of circumstances or conditions.



SELECT SCENES FROM THE HOME SCREEN.



PRESS + TO ADD A NEW SCENE. TAP AN EXISTING SCENE TO EDIT IT.



CHANGE THE CONDITIONS AND SETTINGS.