

Please read BOTH these Installation Instructions and the General Instructions before attempting to install or operate this equipment.

1. Blue Ox® towing products and accessories are intended to be installed by Blue Ox® Dealers who are familiar with our products and have the equipment necessary and knowledge to do "fit work". When necessary Blue Ox® Dealers can be found at www.blueox.com or by contacting our Customer Care Department at (402) 385-3051.
2. Many Blue Ox® Baseplates are designed to use existing holes and hardware to mount the baseplate to the towed vehicle. Even though bolts are there, do not assume they are adequate for baseplate mounting. Always use hardware supplied in the hardware kit and existing hardware specified in the Baseplate Installation Instructions.

Attachment Tab Height: 25.5"

Attachment Tab Width: 24"

Bolt Torque Specifications

Torque in Foot-Pounds for Metric Bolts

Bolt Size	Grade 8.8	Grade 10.9
6MM	6	8
8MM	16	22
10MM	31	40
12MM	54	70
14MM	89	117

Confirm the towability and pre-towing procedures for your vehicle with the owner's manual or contact the vehicle's manufacturer for specific towing procedures.

Bolt Torque Specifications

Torque in Foot-Pounds for Inch Bolts

Bolt Size	Grade 5	Grade 8
1/4"	10	14
5/16"	19	29
3/8"	33	47
7/16"	54	78
1/2"	78	119
5/8"	154	230



! WARNING

Failure to read and follow these instructions could result in separation of the towed vehicle from the tow bar, causing property damage, loss of towed vehicle, personal injury or death.

BX1008

2001 Acura MDX

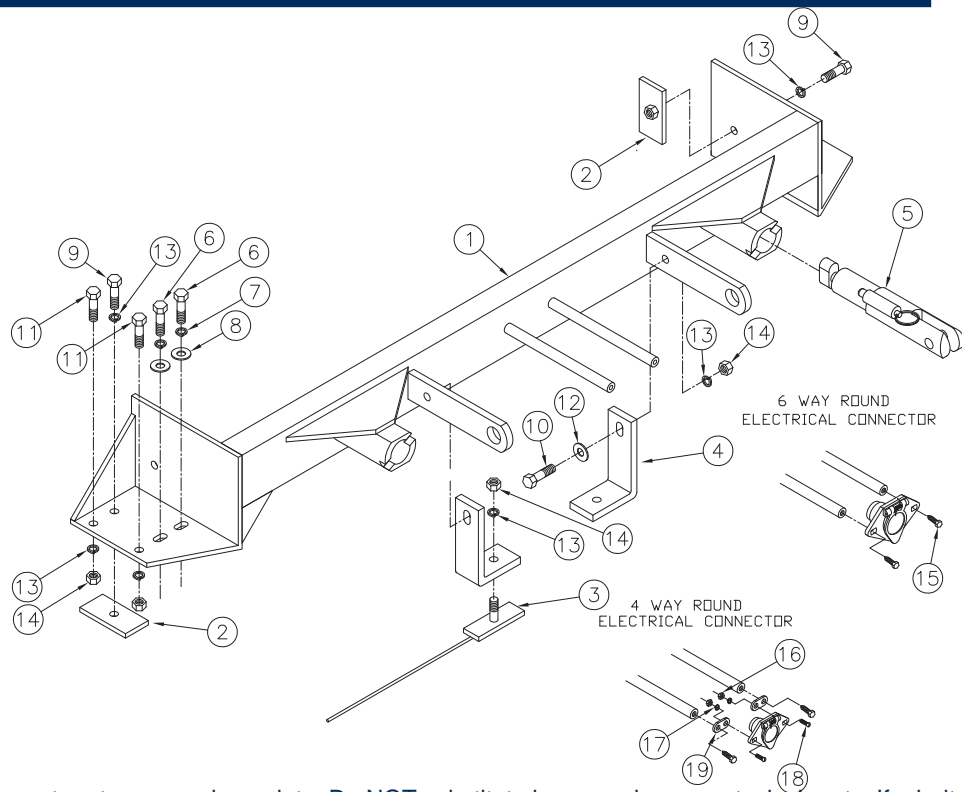
Installation Instructions

Parts List

Ref. No.	Qty.	Part #	Description
1	1	61-5587	Weldment, Baseplate, BX1008
2	4	61-5589	Weldment, 3/8-16, Nutplate
3	2	61-5590	Weldment, 3/8-16 x 1 1/4", Bolt plate, w' Wire
4	2	102-6065	Brace, BX1008
5	2	62-3470	Att Tab Assy, Rem, LF/LB, 1 Hole
6	4	201-0446	8MM-1.25 x 30MM, Hex Bolt, Grd. 8.8, ZP
7	4	203-0102	8MM Lock Washer, ZP
8	4	203-0107	8MM Flat Washer, ZP
9	4	201-0440	3/8-16 x 1 1/2" Hex Bolt, Grd. 5, ZP
10	2	201-0368	3/8-16 x 1 1/4" Hex Bolt, Grd 5, ZP
11	4	201-0443	3/8-16 x 1" Hex Bolt, Grd. 5, ZP
12	2	203-0003	3/8" Flat Washer, ZP
13	12	203-0010	3/8" Lock Washer, ZP
14	8	202-0003	3/8-16 Hex Nut, ZP
15	2	201-0553	1/4-20 x 1/2" Hx. Wshd, Type F Screw
16	2	202-0047	#10-32 Hex Nut
17	2	203-0054	#10 Lock Washer
18	2	201-0192	#10-32 1/2" Slot, Rd. Hd. Screw
19	2	101-5822	Adapter, 4 Way Connector
	2	226-0046	Baseplate Safety Cable, 36" CL III (Not Shown)
	2	229-0359	Quicklink, 3/8, ZP (Not Shown)
	2	290-0437	Cap Plug, Black (Not Shown)

Tools Required

8MM Socket
 10MM Socket
 12MM Socket
 13MM Socket
 13/32" Drill Bit
 Vise Grips
 LOCTITE Red



Important:

Use only genuine factory replacement parts on your baseplate. Do NOT substitute homemade or non-typical parts. If a bolt is lost or in need of replacement, for your safety and the preservation of your baseplate, be sure to use a replacement bolt of the same grade (In most cases it will be Grade 5, please reference the parts list above). Replacement parts may be ordered through your nearest Blue Ox® Dealer or Distributor, or call our Customer Care Team at (402)385-3051. Failing to follow and/or altering these installation instructions in either installation or required equipment will void the manufacturer's warranty.

Towing behind a non-motorized vehicle will void the warranty.

BX1008

2001 Acura MDX

Installation Instructions

Removable Tabs:

Due to the design of the removable tabs, the RangeFinder II tow bar can not be used. Adapters, except for the BX8833 and the BX88151, can not be used with this baseplate.

Instructions:

The front fascia, headlights, horn bracket, and air baffle are removed for the baseplate installation. Drilling is required. Trimming of the air dam and the grille is required.

The dimensional variations between otherwise identical vehicles can be considerable. While the baseplate was designed for easy installation, it may be necessary to tailor the baseplate slightly to compensate for auto manufacturer's tolerances. These minor adjustments may include filing a hole slightly, bending electrical rods or bending end plates.

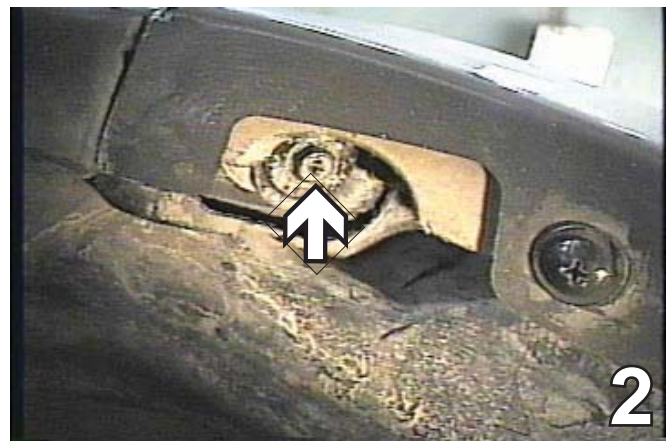
The BX8869 Bulb and Socket Wiring Kit is recommended for this vehicle.

Handling of some cosmetic parts when installing this product may require the use of protective covers, rags, specialty tools, etc. to prevent damage.

Installation Instructions



1. Remove thirteen pushpins on the top side of the grill and two on the bottom of the fascia.

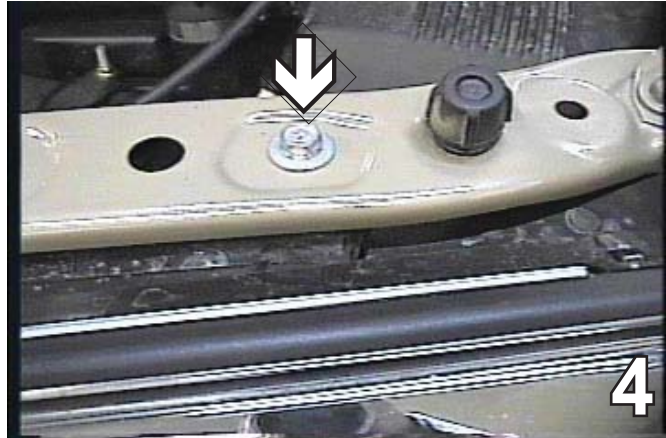


2. Use the 8MM socket to remove a bolt from inside the front wheel well on the fascia corner. Do this to both sides of the vehicle.

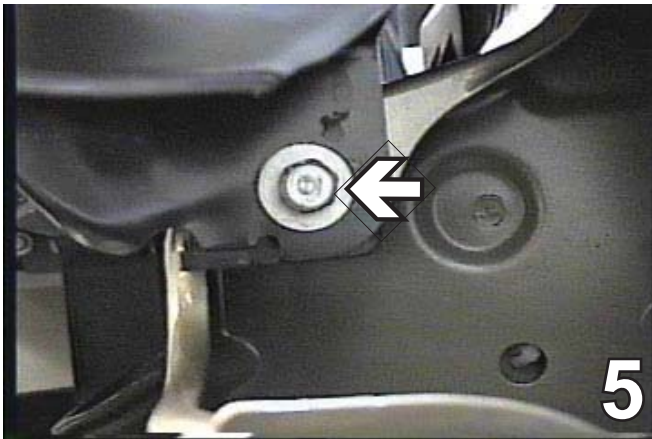
BX1008
2001 Acura MDX
Installation Instructions



3. Using the 10MM socket, remove two metric bolts from the bottom edge of the fascia corner, just forward of front tire. Do this to both sides of the vehicle. Unplug the fog lights, pull fascia forward. Set it and the bolts aside to be reinstalled later.



4. If a right angle drill is available, go to step 7. If not, the head light assemblies need to be removed. Use the 10MM socket to remove two bolts on the top side of head lights. Do this to both sides of the vehicle.



5. Remove the metric bolt with the 10MM socket on the lower outside edge of headlight assembly. Do this to both sides of the vehicle.



6. Remove the two metric bolts from under the headlight assembly, unplug, pull forward and set aside to be reinstalled later. Bracket support just below headlight assemblies, will be removed as well, to provide proper clearance for the baseplate installation.

When using power drills be aware of the dangers of torque and drill bit length.

BX1008
2001 Acura MDX
Installation Instructions



7. Remove the two metric bolts on the top of the metal bumper with the 12MM socket. Do this to both sides of the vehicle. These factory bolts will not be reinstalled. Align and center the baseplate with these bumper holes, tighten the 8MM-1.25 hex bolts, 8MM lock washers provided. Do this to both sides of the vehicle. Do **NOT** apply LOCTITE Red at this time.



9. Remove one metric bolt from the bottom of the metal bumper. Pull the metal bumper forward and set aside to be reinstalled later. Place the baseplate on top of the frame to align with drilled hole. Insert 3/8-16 nut plate into frame opening and align with drilled hole. Hand tighten the 3/8-16 x 1 1/2" hex bolt and 3/8 lock washer into the nut plate. Do this to both sides of the vehicle. Slide the metal bumper between the top of the frame and the baseplate to align with the original position bolt in place with 8MM hardware and 3/8-16 hex bolt provided. Do this to both sides of the vehicle.



8. Using the baseplate as a template, drill the hole into the top center of the frame rail with the 13/32" drill bit. Do this to both sides of the vehicle. Remove metric bolts and set the baseplate aside.



10. Using the baseplate as a template, drill the remaining holes into the frame webbing and radiator support with the 13/32" drill bit. Align the 3/8-16 nut plate on the back side of the radiator support with drill hole. Tighten the 3/8-16 hex bolt and lock washer. Insert the 3/8-16 hex bolts into the drilled holes on the top of the frame webbing and tighten 3/8-16 hex nuts and lock washers. Do this to both sides of the vehicle.

BE SURE TO USE LOCTITE® RED ON ALL BOLTS BEFORE TIGHTENING. TIGHTEN ALL BOLTS ACCORDING TO THE TORQUE CHART ON THE FRONT PAGE OF THESE INSTRUCTIONS OR ON PAGE 3 OF THE BASEPLATE TOWING GENERAL INSTRUCTIONS.

BX1008

2001 Acura MDX

Installation Instructions



11. Align the slotted hole of the bumper brace with the baseplate hole and other end resting flat on top of the metal bumper. Insert the 3/8-16 x 1 1/4" hex bolt into the 3/8" flat washer and into the slotted hole and baseplate. Tighten the 3/8-16 hex nut and lock washer. Using the brace as a template, drill a hole into the metal bumper with the 13/32" drill bit. Insert the 3/8-16 bolt plates with wire into the end of the metal bumper and into drilled holes. Tighten the 3/8-16 hex nuts and lock washers on the top of the brace. Do this to both sides of the vehicle.
 12. Reinstall the headlight assemblies. Hold fascia as close to its original position as possible and trim fascia around the braces to allow the fascia to be installed. Be sure all electrical connections are secured properly and reinstall the fascia.
- Install the tow bar and safety cables according to the instructions included in their packages.

Do not substitute other devices if the tow bar pin and clip are lost.

DEALER OR INSTALLER: BE CERTAIN THE USER RECEIVES THE INSTRUCTION SHEETS.

If the baseplate is in an accident, it must be replaced. **DO NOT** use it again! An accident can cause unseen damage and using it again could result in more damage or serious injury. **DO NOT** use the baseplate if it is damaged or missing parts.

CUSTOMER SERVICE COMMITMENT

Blue Ox is committed to providing you with exceptional customer care throughout your lifetime with our products. Our team is here to assist you with any questions you may have regarding the performance of your product. Simply call 1-800-228-9289 and you can speak with our customer care team.

Additionally, please visit our website to see which rallies our Destination America team will be attending. For a nominal fee, our service technician will service your towing system to ensure it's in proper working condition. Also as a commitment to our customers, should you visit our factory you can stay at our full service Blue Ox campground at no charge along with enjoying a factory tour.

Again thank you for being our customer and for the confidence you have shown in the performance of our products. It is because of customers like you we enjoy the success we have today.



© 2005,08,10 Blue Ox
One Mill Road, Industrial Park
Pender, Nebraska 68047
Phone: (402) 385-3051
Toll Free: (888) 425-5382
Fax: (402) 385-3360
www.blueox.com