



## BX1682

1999NS-2007 Chevrolet & GMC Pickup 1500 Classic  
(2WD & 4WD, No Heavy Duty)  
1999NS-06 Chevy Suburban 1500  
2000-06 Chevy Tahoe 1500  
2000-06 GMC Yukon 1500 (XL, XLT, SLT) (Denali)  
2002-06 Chevy Avalanche  
2002-06 Cadillac Escalade (Incl. EXT)  
Installation Instructions

Please read **BOTH** these Installation Instructions and the Baseplate General Towing Instructions before attempting to install or operate this equipment.

**Attachment Tab Height:** 17"  
**Attachment Tab Width:** 30-1/8"

Serial Number

1. Blue Ox® towing products and accessories are intended to be installed by Blue Ox® Dealers who are familiar with our products and have the equipment and knowledge to do "fit work". When necessary Blue Ox® Dealers can be found at [www.blueox.com](http://www.blueox.com) or by contacting our Customer Care Department at (402) 385-3051.
2. Many Blue Ox® Baseplates are designed to use existing holes and hardware to mount the baseplate to the towed vehicle. Even though bolts are there, do not assume they are adequate for baseplate mounting. Always use hardware supplied in the hardware kit or existing hardware specified in the Baseplate Towing Installation Instructions.

Confirm the towability and pre-towing procedures for your vehicle with the owner's manual or contact the vehicle's manufacturer for specific towing procedures.

### Bolt Torque Specifications

Torque in Foot-Pounds for Metric Bolts

Bolt Size	Grade 8.8	Grade 10.9
6MM	6	8
8MM	16	22
10MM	31	40
12MM	54	70
14MM	89	117

### Bolt Torque Specifications

Torque in Foot-Pounds for Inch Bolts

Bolt Size	Grade 5	Grade 8
1/4"	10	14
5/16"	19	29
3/8"	33	47
7/16"	54	78
1/2"	78	119
5/8"	154	230



## WARNING

Failure to read and follow these instructions could result in separation of the towed vehicle from the tow bar, causing property damage, loss of towed vehicle, personal injury or death.

## BX1682

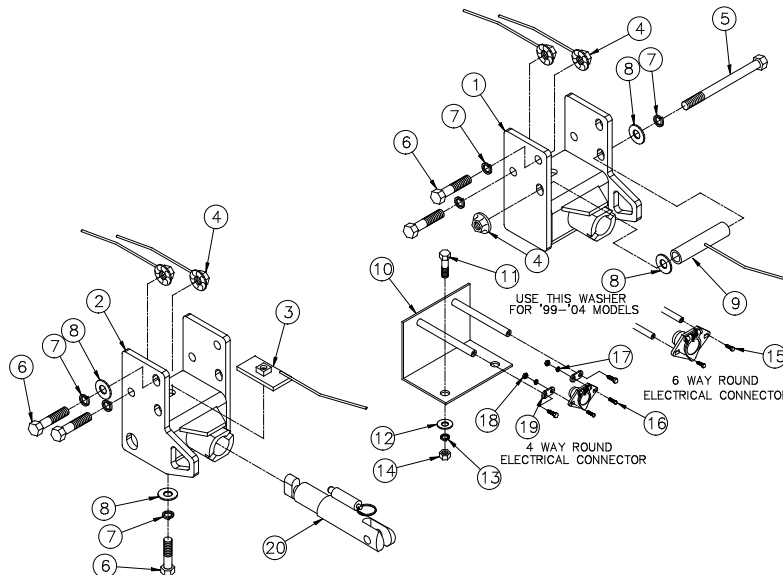
1999NS-2007 Chevrolet & GMC Pickup 1500 Classic (2WD & 4WD, No Heavy Duty)  
1999NS-06 Chevy Suburban 1500  
2000-06 Chevy Tahoe 1500  
2000-06 GMC Yukon 1500 (XL, XLT, SLT) (Denali)  
2002-06 Chevy Avalanche  
2002-06 Cadillac Escalade (Incl. EXT)  
Installation Instructions

### Parts List

Ref. No.	Qty.	Part #	Description
1	1	61-6552	Weldment, Baseplate, Driver's Side, BX1682
2	1	61-6553	Weldment, Baseplate, Passenger's Side, BX1682
3	2	61-5342	1/2-13 Nutplate, with 14" Wire
4	10	61-4029	1/2-13 Whiz Nut, with 10" Wire
5	2	201-0772	1/2-13 x 6" Hex Bolt, Grd. 5, ZP
6	10	201-0068	1/2-13 x 1 3/4" Hex Bolt, Grd. 5, ZP
7	12	203-0012	1/2" Lock Washer, ZP
8	10	203-0005	1/2" Flat Washer, ZP
9	2	61-6239	Weldment, Spacer Tube, BX1667
10	1	61-6238	Weldment, Electrical Bracket, BX1667
11	2	201-0368	3/8-16 x 1 1/4" Hex Bolt, Grd. 5, ZP
12	2	203-0003	3/8" Flat Washer, ZP
13	2	203-0010	3/8" Lock Washer, ZP
14	2	202-0003	3/8-16 Hex Nut, ZP
15	2	201-0553	1/4-20 x 1/2" Hex Wshd, Type F Screw
16	2	201-0192	#10-32 x 1/2" Slot, Rd. Hd. Screw
17	2	203-0054	#10 Lock Washer
18	2	202-0047	#10-32 Hex Nut
19	2	101-5822	Adapter, 4 Way Connector
20	2	62-3468	Attachment Assembly, SF/LB (R)
	2	226-0049	Baseplate Safety Cable, 36" CL IV (Not Shown)
	2	229-0512	Quicklink, 1/2, ZP (Not Shown)
	2	290-0437	Cap Plug, Black (Not Shown)

### Tools Required

6MM Socket  
10MM Socket  
15MM Socket  
18MM Socket  
9/16" Socket  
3/4" Socket  
17/32" Drill Bit  
Loctite® Red



### Important:

Use only genuine factory replacement parts on your baseplate. Do **NOT** substitute homemade or non-typical parts. If a bolt is lost or in need of replacement, for your safety and the preservation of your baseplate, be sure to use a replacement bolt of the same grade (In most cases it will be Grade 5, please reference the parts list above). Replacement parts may be ordered through your nearest Blue Ox® Dealer or Distributor. Failing to follow and/or altering these installation instructions in either installation or required equipment will void the manufacturer's warranty.

## BX1682

1999NS-2007 Chevrolet & GMC Pickup 1500 Classic (2WD & 4WD, No Heavy Duty)  
1999NS-06 Chevy Suburban 1500  
2000-06 Chevy Tahoe 1500  
2000-06 GMC Yukon 1500 (XL, XLT, SLT) (Denali)  
2002-06 Chevy Avalanche  
2002-06 Cadillac Escalade (Incl. EXT)  
Installation Instructions

### Vehicle Weight:

The weight of this vehicle is near the Class III, 5,000 lb rating limitations. Some models, depending on options, may well exceed this 5,000 lb rating. Be sure to confirm the weight of your individual vehicle before towing. As of 1999 the Aventa® II is now rated 10,000 lbs. and either the Aventa® II or the Aventa® LX tow bar must be used for these applications.

**Tow Bar Adapters are NOT to be used with vehicle's weighing over 5,000 lbs.**

### Installation Notes:

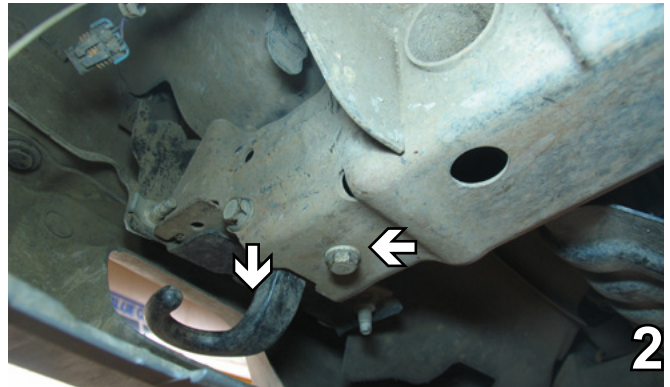
The plastic frame shield, tow hooks, and fog lights (if necessary) are removed during the baseplate installation. Drilling is required. The plastic frame shield and the tow hooks will not be reinstalled.

The dimensional variations between otherwise identical vehicles can be considerable. While the baseplate was designed for easy installation, it may be necessary to tailor the baseplate slightly to compensate for auto manufacturer's tolerances. These minor adjustments may include filing a hole slightly, bending electrical rods or bending end plates.

The BX8869 Bulb and Socket Wiring Kit is recommended for this vehicle.



1. Using the 10MM socket, remove two metric bolts from the plastic frame shield, just behind the metal bumper. Do this to both sides of the vehicle. The driver's side is shown in the photo above. Remove the plastic frame shield from the frame. The metric bolts and the plastic shield will NOT be reinstalled.



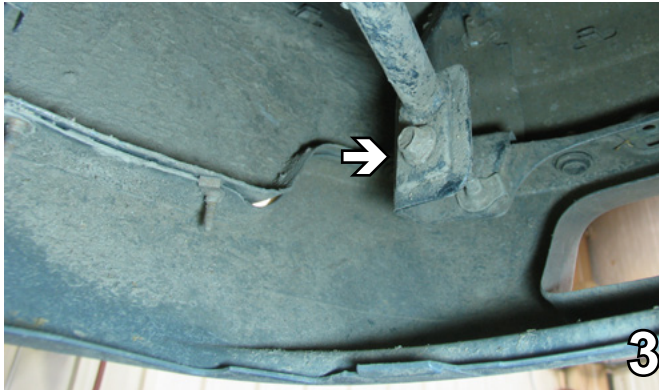
2. Using the 18MM socket, remove three metric bolts from the tow hooks, one on the bottom of the frame rail and two on the sides. Do this to both sides of the vehicle. The tow hooks will NOT be reinstalled

Handling of some cosmetic parts when installing this product may require the use of protective covers, rags, specialty tools, etc. to prevent damage.

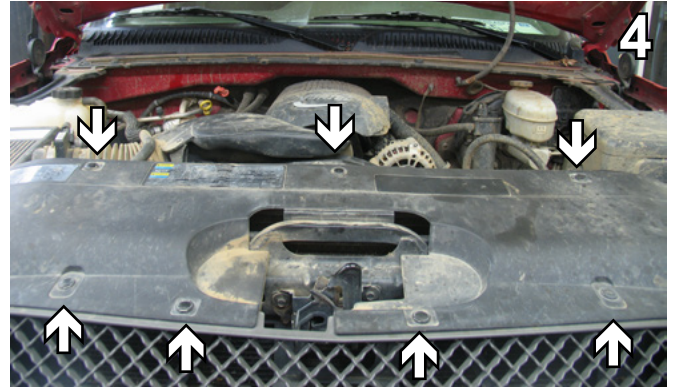


## BX1682

1999NS-2007 Chevrolet & GMC Pickup 1500 Classic (2WD & 4WD, No Heavy Duty)  
1999NS-06 Chevy Suburban 1500  
2000-06 Chevy Tahoe 1500  
2000-06 GMC Yukon 1500 (XL, XLT, SLT) (Denali)  
2002-06 Chevy Avalanche  
2002-06 Cadillac Escalade (Incl. EXT)  
Installation Instructions



3. Underneath the vehicle, using an 15MM socket, remove the bolt holding the brace. Do this to both sides of the vehicle. Set the bolt and brace aside to be reinstalled later.



4. Remove seven push pins from the top of the plastic cover. Set the cover and the pins aside to be reinstalled later.

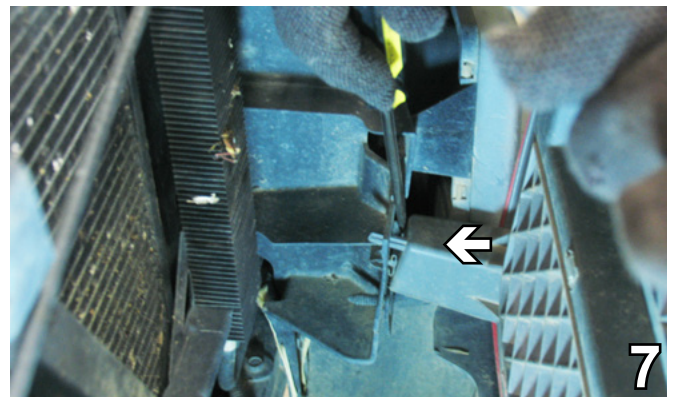


5. Insert a flat screw driver between the headlight and the plastic cover. Carefully pry loose the plastic cover. Do this on both sides of the cover and set aside to be reinstalled later.



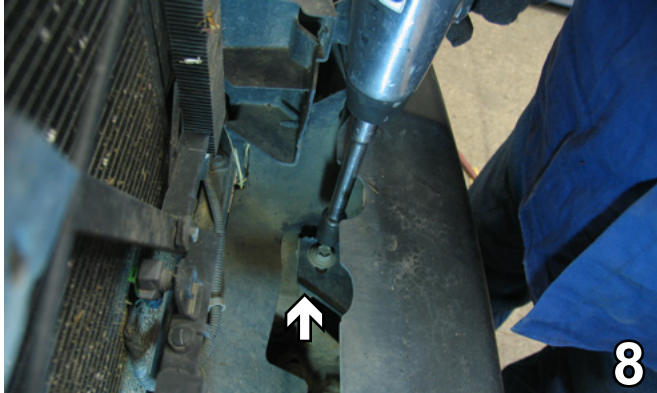
6. Insert a flat screw driver behind the front grille bracket. Push forward to release the bracket. Do this on both sides.

7. Behind the grille, push down on the tab in order to remove the grille. Do this on both sides of the vehicle. Set the grille aside to be reinstalled later.



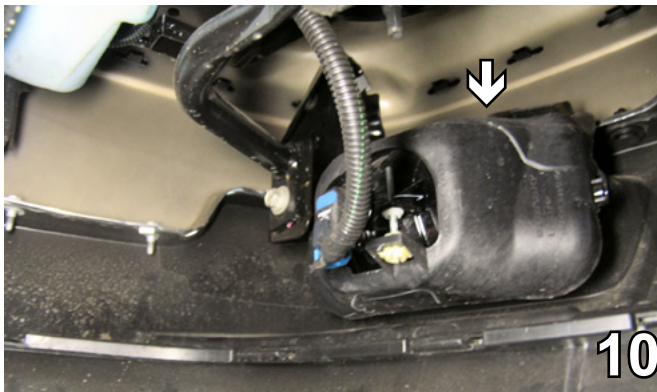
## BX1682

1999NS-2007 Chevrolet & GMC Pickup 1500 Classic (2WD & 4WD, No Heavy Duty)  
1999NS-06 Chevy Suburban 1500  
2000-06 Chevy Tahoe 1500  
2000-06 GMC Yukon 1500 (XL, XLT, SLT) (Denali)  
2002-06 Chevy Avalanche  
2002-06 Cadillac Escalade (Incl. EXT)  
Installation Instructions

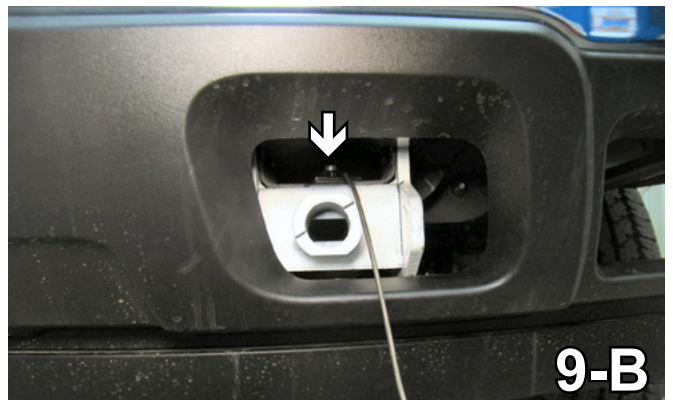
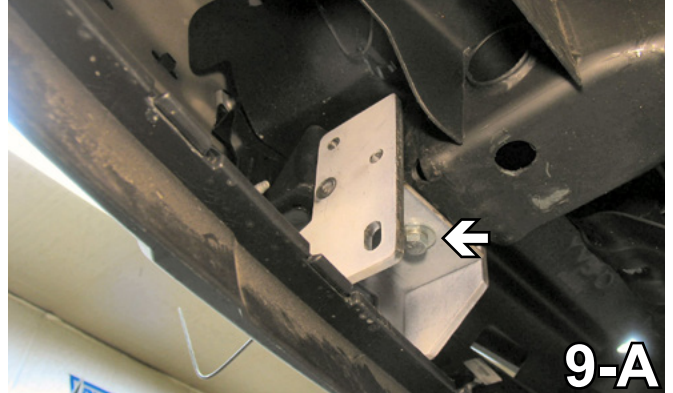


8. Using an 15MM socket, remove the bolt from the top of the bumper. Do this on both sides of the vehicle. Set the bumper aside to be reinstalled later.

**The baseplate is painted white for illustrative purposes ONLY. The actual baseplate has a black powder coat finish.**



10. If a right angle drill is not available, removal of the fog lights will be necessary to open the area to the side of the frame rail for drilling. To remove the fog lights, when necessary, use a 10MM socket to remove two metric bolts from the top side of the fog light, behind the metal bumper. Unplug the electrical connections and set the fog lights and bolts aside to be reinstalled later.



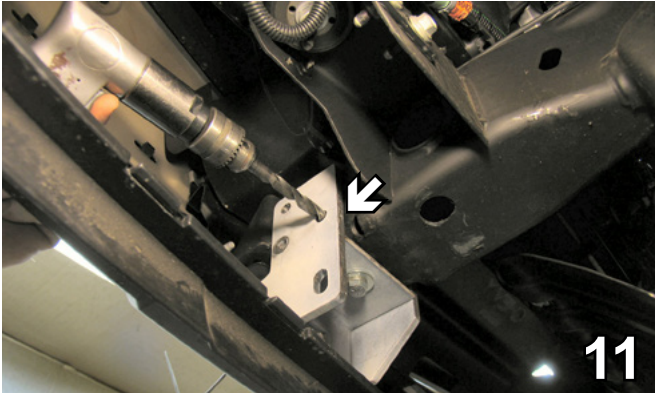
9. On the driver's side, slide the baseplate onto the frame rail end, just behind the metal bumper, align the lower tow hook mount hole with the lower baseplate endplate hole (see photo 9-A). Insert the 1/2-13 nut plate into the frame end to align with the lower tow hook and endplate holes and tighten the 1/2-13 hex bolt, 1/2" lock washer and the 1/2" flat washer into the nut plate (see photo 9-B). Do this to both sides of the vehicle.

**Some vehicles not having tow hooks may not have this area open. If that is the case, cut out the marked area on the fascia.**

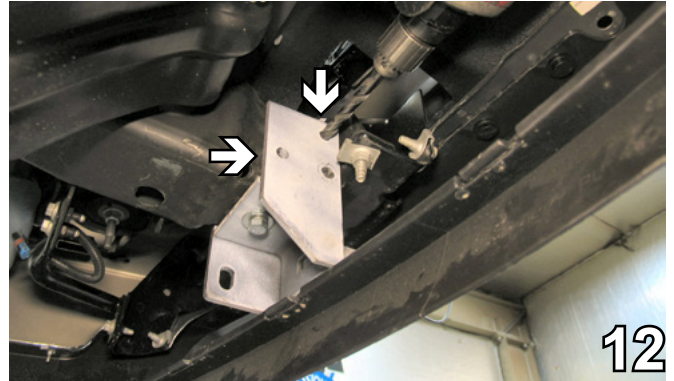


## BX1682

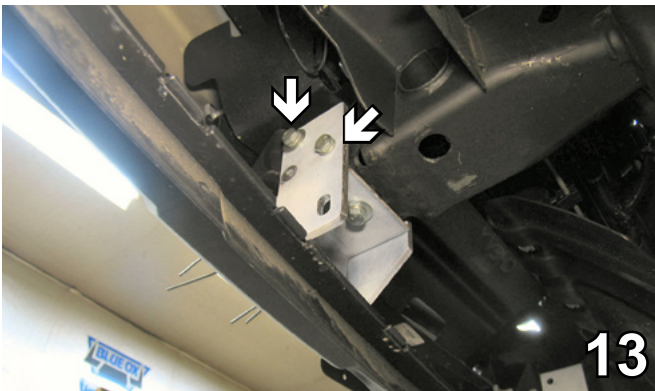
1999NS-2007 Chevrolet & GMC Pickup 1500 Classic (2WD & 4WD, No Heavy Duty)  
1999NS-06 Chevy Suburban 1500  
2000-06 Chevy Tahoe 1500  
2000-06 GMC Yukon 1500 (XL, XLT, SLT) (Denali)  
2002-06 Chevy Avalanche  
2002-06 Cadillac Escalade (Incl. EXT)  
Installation Instructions



11. On the side of the frame rail, next to the fog light, use the baseplate as a template to drill the lower back hole on the side of the frame rail with the 17/32" drill bit. Do this to both sides of the vehicle. The driver's side is shown in the photo above.



12. On the side of the frame rail, next to the radiator, use the baseplate as a template to drill the lower back hole and upper front hole on the side of the frame rail with the 17/32" drill bit. Do this to both sides of the vehicle. The driver's side is shown in the photo above.



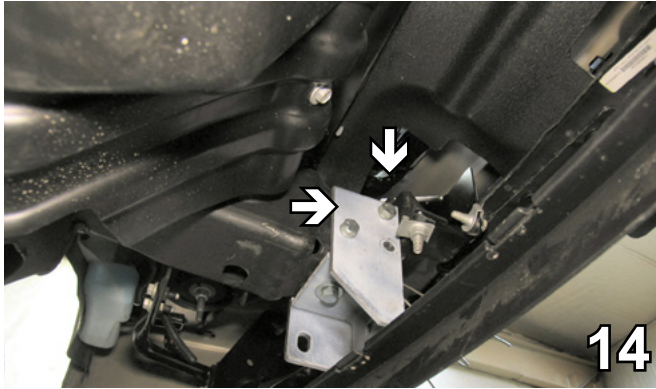
13. Insert the 1/2-13 whiz nut with wire into the frame end to align with holes on the fog light side of the frame. Tighten the 1/2-13 hex bolts and lock washers with the 3/4" socket. The top bolt will need to have a flat washer installed with the lock washer to cover the slot in the baseplate endplate. Do this to both sides of the vehicle.

When using power drills be aware of the dangers of torque and drill bit length.

**BE SURE TO USE LOCTITE® RED ON ALL BOLTS BEFORE TIGHTENING. TIGHTEN ALL BOLTS ACCORDING TO THE TORQUE CHART ON THE FRONT PAGE OF THESE INSTRUCTIONS OR ON PAGE 3 OF THE BASEPLATE GENERAL TOWING INSTRUCTIONS.**

## BX1682

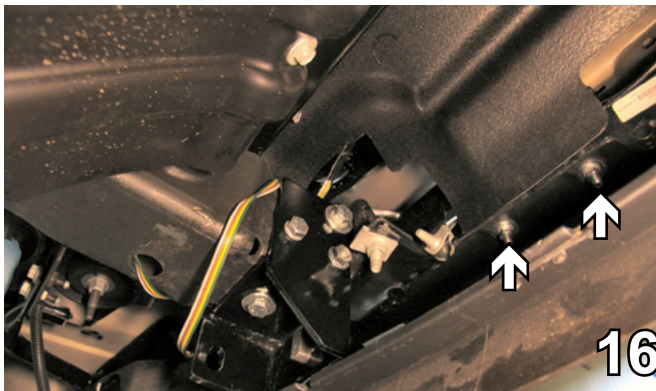
1999NS-2007 Chevrolet & GMC Pickup 1500 Classic (2WD & 4WD, No Heavy Duty)  
1999NS-06 Chevy Suburban 1500  
2000-06 Chevy Tahoe 1500  
2000-06 GMC Yukon 1500 (XL, XLT, SLT) (Denali)  
2002-06 Chevy Avalanche  
2002-06 Cadillac Escalade (Incl. EXT)  
Installation Instructions



14. Insert the 1/2-13 whiz nut with wire into the frame end to align with the drilled holes on the radiator side of the frame. Tighten the 1/2-13 hex bolts and lock washers with the 3/4" socket. The top bolt will need to have a flat washer with the lock washer to cover slot in baseplate endplate. Do this to both sides of the vehicle.



15. Insert the spacer tube inside the frame end to align with the existing tow hook mount holes. Then insert the 1/2-13 x 6" hex bolt through the baseplate, into the spacer tube from the fog light side of the frame rail and tighten into the 1/2-13 whiz nut on the radiator side of the frame rail with the 3/4" socket. Do this to both sides of the vehicle. The driver's side is shown in the photo above.



16. Remove the two pushpins from underneath the webbing on the back side of the metal bumper. Align the electrical bracket to the top of the webbing to allow the electrical rods to come through the opening on the front side of the metal bumper. Insert the two 3/8-16 x 1 1/4" hex bolts into the top side of the electrical bracket holes. Tighten the 3/8-16 hex nuts and lock washers on the bottom side of the webbing with the 9/16" socket. Installing the electrical bracket will allow you a convenient location to attach your electrical plug receptacle on the front of your vehicle.
17. Reinstall the fog lights.

Install the tow bar and safety cables according to the instructions included in their packages.

Do NOT substitute other devices if the tow bar pin and clip are lost.



## **BX1682**

1999NS-2007 Chevrolet & GMC Pickup 1500 Classic (2WD & 4WD, No Heavy Duty)  
1999NS-06 Chevy Suburban 1500  
2000-06 Chevy Tahoe 1500  
2000-06 GMC Yukon 1500 (XL, XLT, SLT) (Denali)  
2002-06 Chevy Avalanche  
2002-06 Cadillac Escalade (Incl. EXT)  
Installation Instructions

**Be sure that ALL electrical connections are plugged in properly and functioning BEFORE Installing the fascia.**

### **DEALER or INSTALLER:**

**Be certain the user receives the instruction sheets for their products.**



**Shown without removable tabs installed.**



**Shown with removable tabs installed.**

If the baseplate is in an accident, it must be replaced. DO NOT use it again! An accident can cause unseen damage and using it again could result in more damage or serious injury. DO NOT use the baseplate if it is damaged or missing parts.

## **CUSTOMER SERVICE COMMITMENT**

Blue Ox is committed to providing you with exceptional customer care throughout your lifetime with our products. Our team is here to assist you with any questions you may have regarding the performance of your product. Simply call (402) 385-3051 and you can speak with our customer care team.

Additionally, please visit our website to see which rallies our Destination America team will be attending. For a nominal fee, our service technician will service your towing system to ensure it's in proper working condition. Also as a commitment to our customers, should you visit our factory you can stay at our full service Blue Ox campground at no charge along with enjoying a factory tour.

Again thank you for being our customer and for the confidence you have shown in the performance of our products. It is because of customers like you we enjoy the success we have today.



© 2006, 10, 11 Blue Ox  
One Mill Road, Industrial Park  
Pender, Nebraska 68047  
Phone: (402) 385-3051  
Toll Free: (888) 425-5382  
Fax: (402) 385-3360  
[www.blueox.com](http://www.blueox.com)  
12/20/12