

BX2232
2002-04 Honda CR-V
2003-11 Honda Element
Installation Instructions

Serial Number

Please read BOTH these Installation Instructions and the General Instructions before attempting to install or operate this equipment.

- Blue Ox® towing products and accessories are intended to be installed by Blue Ox® Dealers who are familiar with our products and have the equipment necessary and knowledge to do "fit work". When necessary Blue Ox® Dealers can be found at www.blueox.com or by contacting our Customer Care Department at (402) 385-3051.
- Many Blue Ox® Baseplates are designed to use existing holes and hardware to mount the baseplate to the towed vehicle. Even though bolts are there, do not assume they are adequate for baseplate mounting. Always use hardware supplied in the hardware kit and existing hardware specified in the Baseplate Installation Instructions.

Attachment Tab Height: 21"
Attachment Tab Width: 24"

Bolt Torque Specifications
Torque in Foot-Pounds for Metric Bolts

Bolt Size	Grade 8.8	Grade 10.9
6MM	6	8
8MM	16	22
10MM	31	40
12MM	54	70
14MM	89	117

Confirm the towability and pre-towing procedures for your vehicle with the owner's manual or contact the vehicle's manufacturer for specific towing procedures.

Bolt Torque Specifications
Torque in Foot-Pounds for Inch Bolts

Bolt Size	Grade 5	Grade 8
1/4"	10	14
5/16"	19	29
3/8"	33	47
7/16"	54	78
1/2"	78	119
5/8"	154	230



! WARNING

Failure to read and follow these instructions could result in separation of the towed vehicle from the tow bar, causing property damage, loss of towed vehicle, personal injury or death.

BX2232

2002-04 Honda CR-V

2003-11 Honda Element

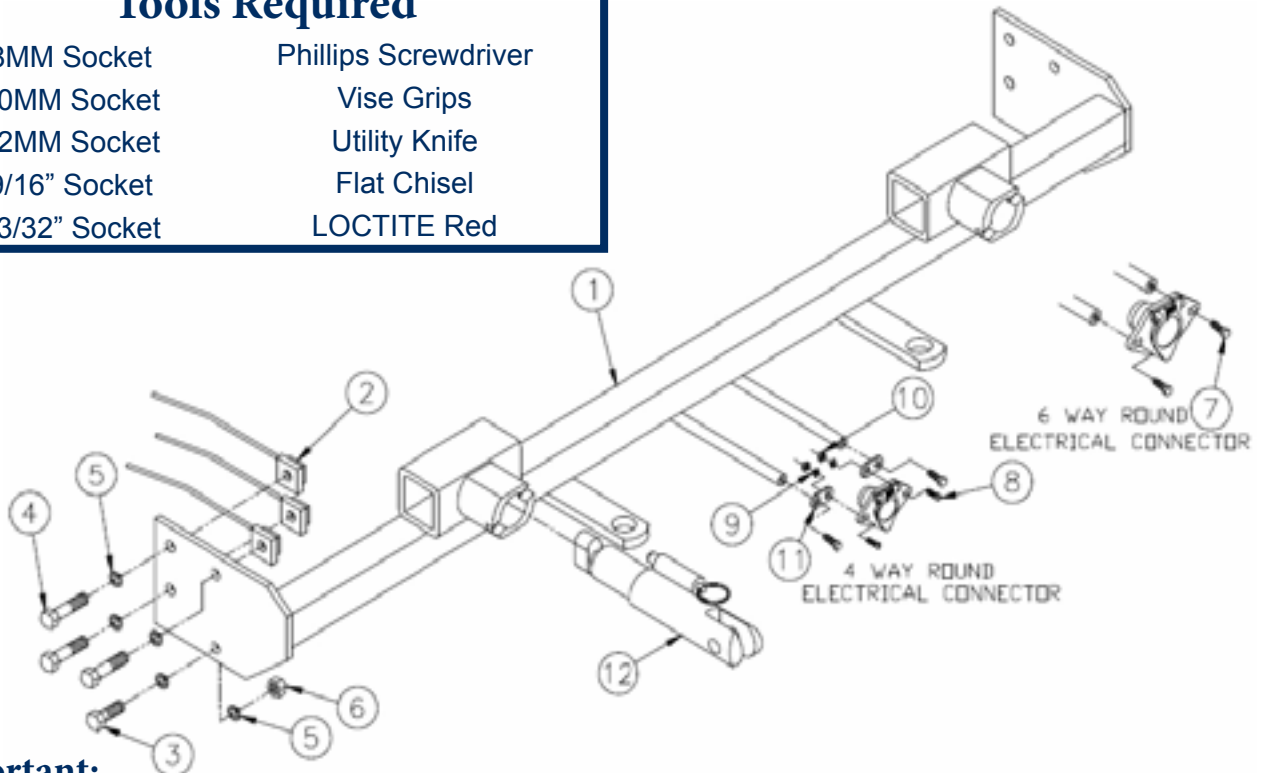
Installation Instructions

Parts List

Ref. No.	Qty.	Part #	Description
1	1	61-5939	Weldment, Baseplate, BX2232
2	6	61-5208	3/8" Nut Plate, With 14" Wire
3	4	201-0443	3/8-16x1" Bolt, Grd. 5, ZP
4	6	201-0440	3/8-16x1 1/2" Bolt, Grd 5, ZP
5	10	203-0010	3/8" Lock Washer
6	4	202-0003	3/8-16 Hex Nut
7	2	201-0553	1/4-20x1/2" Hx. Wshd, Type F Screw
8	2	201-0192	#10-32x1/2" Slot, Rd. Hd. Screw
9	2	203-0054	#10 Lock Washer
10	2	202-0047	#10-32 Hex Nut
11	2	101-5822	Adapter, 4 Way Connector
12	2	62-3468	Attachment, Assembly, SF/SB (R)
	2	102-6473	Backing Plate, BX2232 (Not Shown)
	2	226-0046	Baseplate Safety Cable, 36" CL III (Not Shown)
	2	229-0359	Quicklink, 3/8, ZP (Not Shown)
	2	290-0437	Cap Plug, Black (Not Shown)

Tools Required

8MM Socket	Phillips Screwdriver
10MM Socket	Vise Grips
12MM Socket	Utility Knife
9/16" Socket	Flat Chisel
13/32" Socket	LOCTITE Red



Important:

Use only genuine factory replacement parts on your baseplate. Do NOT substitute homemade or non-typical parts. If a bolt is lost or in need of replacement, for your safety and the preservation of your baseplate, be sure to use a replacement bolt of the same grade (In most cases it will be Grade 5, please reference the parts list above). Replacement parts may be ordered through your nearest Blue Ox® Dealer or Distributor, or call our Customer Care Team at (402)385-3051. Failing to follow and/or altering these installation instructions in either installation or required equipment will void the manufacturer's warranty.

BX2232

2002-04 Honda CR-V

2003-11 Honda Element

Installation Instructions

Removable Tabs:

Due to the design of the removable tabs, the RangeFinder II tow bar can not be used. Adapters, except for the BX8833 and the BX88151, can not be used with this baseplate.

Instructions:

The front fascia is removed and reinstalled for the baseplate installation. Drilling is required. The back of the fascia may require trimming. The bumper brace on the passenger's side and bumper is removed. Metal bumper will not be reinstalled.

The dimensional variations between otherwise identical vehicles can be considerable. While the baseplate was designed for easy installation, it may be necessary to tailor the baseplate slightly to compensate for auto manufacturer's tolerances. These minor adjustments may include filing a hole slightly, bending electrical rods or bending end plates.

The BX8869 Bulb and Socket Wiring Kit is available for this vehicle.



Possible location for the BX8869 Bulb and Socket Wiring Kit.

Installation Instructions



1. Using a 10MM socket, remove the metric bolt from the battery hold down strap. Set the bolt aside to be reinstalled later.

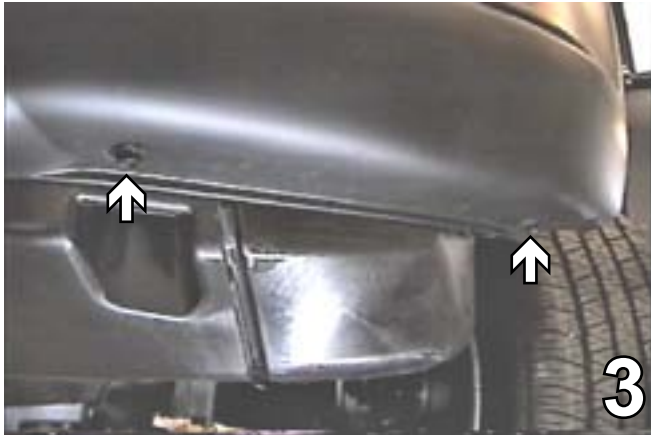


2. Remove NINE pushpins from the top plastic of fascia. Set the cover and pushpins aside to be reinstalled later.

Handling of some cosmetic parts when installing this product may require the use of protective covers, rags, specialty tools, etc. to prevent damage.

BX2232

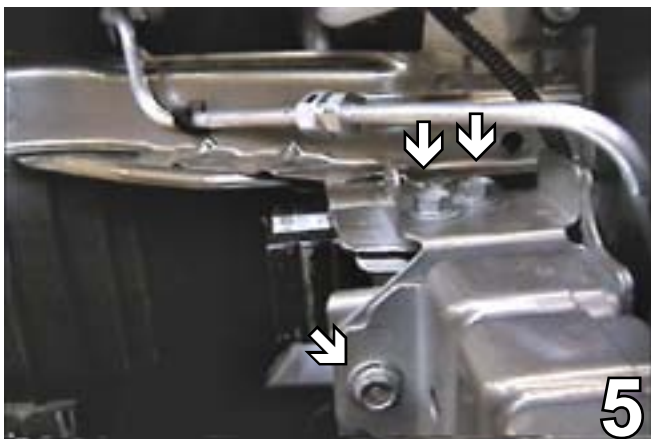
2002-04 Honda CR-V 2003-11 Honda Element Installation Instructions



3. Using a 10MM socket, remove two metric bolts from the bottom of edge of the fascia, just forward of the front tires. Set bolts aside to be reinstalled later. Do this to both sides of the vehicle. Remove two pushpins from the lower edge of the fascia. Set push pins aside to be reinstalled later. Do this to both sides of the vehicle.



4. Using the 8MM socket, remove the metric bolts on the upper fascia corner. Set bolts aside to be reinstalled later. Do this to both sides of the vehicle. Pull the fascia forward and set carefully aside to be reinstalled later.



5. Using the 12MM socket remove two metric bolts from the top side of the frame and one metric bolt from the side of frame, see arrows in photo, both sides. Remove the metric bolt on the bottom with the 12MM socket, both sides, and remove metal bumper. Metal bumper will not be reinstalled.



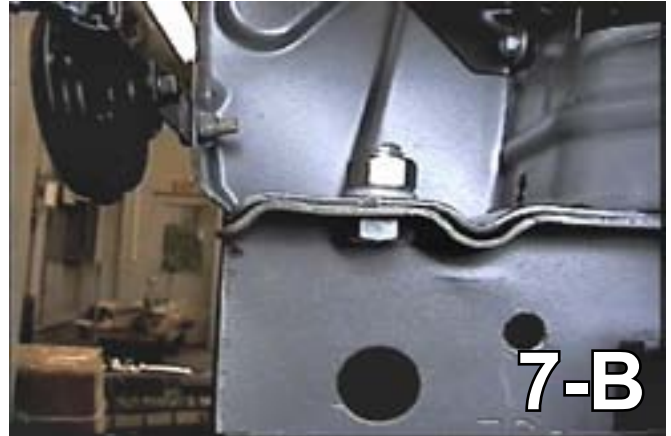
6. Using the 13MM socket, loosen one metric bolt on the horn bracket and turn the horn out. Do this to both sides of the vehicle. See the photo above.

BX2232

2002-04 Honda CR-V

2003-11 Honda Element

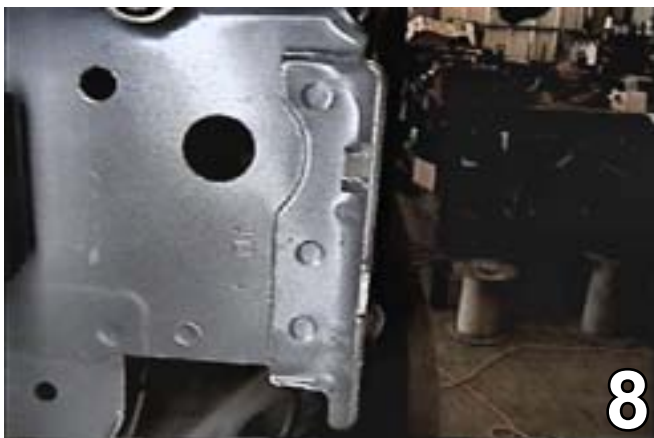
Installation Instructions



7. Drill one hole in the frame webbing using the 13/32" drill. Do this to both sides of the vehicle. Insert 3/8-16x1" hex bolt into the bottom of the drilled hole, tighten the lock washer and hex nut. Do this to both sides of the vehicle.

BE SURE TO USE LOCTITE® RED ON ALL BOLTS BEFORE TIGHTENING. TIGHTEN ALL BOLTS ACCORDING TO THE TORQUE CHART ON THE FRONT PAGE OF THESE INSTRUCTIONS OR ON PAGE 3 OF THE BASEPLATE TOWING GENERAL INSTRUCTIONS.

When using power drills be aware of the dangers of torque and drill bit length.



8. Using the 13/32" drill bit, drill out three spot welds on the passenger's side bumper brace and separate brace from the frame with the flat chisel. **DO NOT DRILL THROUGH THE FRAME.**



9. Slide the baseplate onto the frame even with the sensor guard, 1/4" from the underside of the frame webbing and clamp to the frame using the vise grips. Be sure the baseplate is level with the frame, hold the fascia in place to see if the baseplate comes through the fascia's opening properly. Adjust as need and set the fascia aside. Using the baseplate as a template, drill all of the holes with the 13/32" drill bit.

BX2232

2002-04 Honda CR-V

2003-11 Honda Element

Installation Instructions



10. Insert the nut plate with wire into the opening in the frame end to align with the three upper drilled holes. Tighten the 3/8-16x1 1/2" bolt and lock washer. Do this to both sides of the vehicle.



11. Install the 3/8-16x1" bolt into the lower drilled holes in the webbing, tighten hex and lock washer. Do this to both sides of the vehicle.

Be sure that **ALL** electrical connections are plugged in properly and functioning **BEFORE** installing the fascia.



12. Attach the permanent baseplate safety cables to the provided convenience link on the baseplate (see grey arrow). The photo above shows the recommended installation of the cables to frame of vehicle (see white arrow). Additional options may interfere with suggested mounting; in this case secure the cables to a solid piece of the frame as described in the instructions included with the permanent baseplate safety cables. Be sure the safety cables do not rub against any hoses or moving parts. Do this to both sides of the vehicle.

13. Reinstall the fascia and use the two backing plates on the lower push pins that were removed in step 4. Some models may require minor trimming to back side of the fascia.

Install the tow bar and safety cables according to the instructions included in their packages.

Do NOT substitute other devices if the tow bar pin and clip are lost.

DEALER or INSTALLER:
Be certain the user receives the instruction sheets for their products.

BX2232

2002-04 Honda CR-V

2003-11 Honda Element

Installation Instructions



Shown without Removable Tabs Installed.



Shown with Removable Tabs Installed.

If the baseplate is in an accident, it must be replaced. DO NOT use it again! An accident can cause unseen damage and using it again could result in more damage or serious injury. DO NOT use the baseplate if it is damaged or missing parts.

CUSTOMER SERVICE COMMITMENT

Blue Ox is committed to providing you with exceptional customer care throughout your lifetime with our products. Our team is here to assist you with any questions you may have regarding the performance of your product. Simply call 1-402-385-3051 and you can speak with our customer care team.

Additionally, please visit our website to see which rallies our Destination America team will be attending. For a nominal fee, our service technician will service your towing system to ensure it's in proper working condition. Also as a commitment to our customers, should you visit our factory you can stay at our full service Blue Ox campground at no charge along with enjoying a factory tour.

Again thank you for being our customer and for the confidence you have shown in the performance of our products. It is because of customers like you we enjoy the success we have today.



© 2006, 07, 08, 09, 10, 11 Blue Ox
One Mill Road, Industrial Park
Pender, Nebraska 68047
Phone: (402) 385-3051
Toll Free: (888) 425-5382
Fax: (402) 385-3360
www.blueox.com