

**BX2627**

2011-14 Ford Explorer (No Adaptive Cruise Control) Installation Instructions

Serial Number

Attachment Tab Height: 15-1/2"**Attachment Tab Width: 24"**

Please read BOTH these Installation Instructions and the General Instructions prior to installing or operating this equipment.

1. Blue Ox® towing products and accessories are intended to be installed by Blue Ox® Dealers who are familiar with our products and have the equipment and knowledge necessary to do "fit work". If needed, Blue Ox® Dealers can be found at www.blueox.com or by contacting our Customer Care Department at (402) 385-3051.
2. Many Blue Ox® baseplates are designed to use existing holes and hardware to mount the baseplate to the towed vehicle. Even though bolts are there, do not assume they are adequate for baseplate mounting. Always use the hardware supplied in the hardware kit and existing hardware as specified in the installation instructions.



If the front of your vehicle looks different than this, please contact us at (402)385-3051.

Reference your vehicle owner's manual for manufacturer's towing specifications.

Bolt Torque Specifications

Torque in Foot-Pounds for Inch Bolts

Bolt Size	Grade 5	Grade 8
1/4"	10	14
5/16"	19	29
3/8"	33	47
7/16"	54	78
1/2"	78	119
5/8"	154	230
3/4"	257	380

Bolt Torque Specifications

Torque in Foot-Pounds for Metric Bolts

Bolt Size	Grade 8.8	Grade 10.9
6MM	6	8
8MM	16	22
10MM	31	40
12MM	54	70
14MM	89	117
16MM	161	230
18MM	222	318



WARNING

Failure to read and follow these instructions could result in separation of the towed vehicle from the tow bar, causing property damage, loss of towed vehicle, personal injury or death.

BX2627
2011-14 Ford Explorer (No Adaptive Cruise Control)
Installation Instructions

Instruction Notes: The fascia, temperature sensor and windshield washer fluid reservoir are removed and reinstalled for the baseplate installation. Some drilling and trimming is required.

Place all components that are removed on a flat, sturdy surface. All items will be reinstalled unless otherwise noted after the baseplate is installed.

The dimensional variations between otherwise identical vehicles can be considerable. While the baseplate was designed for easy installation, it may be necessary to tailor the baseplate slightly to compensate for vehicle manufacturer's tolerances.

The BX8848 4-Diode Wiring Kit is recommended for this vehicle.

NOTICE

- Handling of some cosmetic parts when installing this product may require the use of protective covers, rags, specialty tools, etc. to prevent damage.
- When using power drills be aware of the dangers of torque and drill bit length.
- When using a reciprocating saw be aware of objects behind the cutting surface.
- Use a good quality paint to spray cut edges of frame to prevent rusting.
- Be sure that **ALL** electrical connections are plugged in and accessories are functioning properly before reinstalling the fascia.
- Do not use the towed vehicle for storing luggage, equipment, etc. This may cause you to exceed the towing capacity of the tow bar, baseplate and its accessories.
- Be sure to use Loctite® Red on all bolts before tightening. Tighten all bolts according to the torque chart provided.
- Dealer or installer be certain the user receives these instruction sheet.
- If the baseplate is in an accident, it must be replaced. **DO NOT** use it again! An accident can cause unseen damage and using it again could result in more damage or serious injury. **DO NOT** use the baseplate if it is damaged or missing parts.

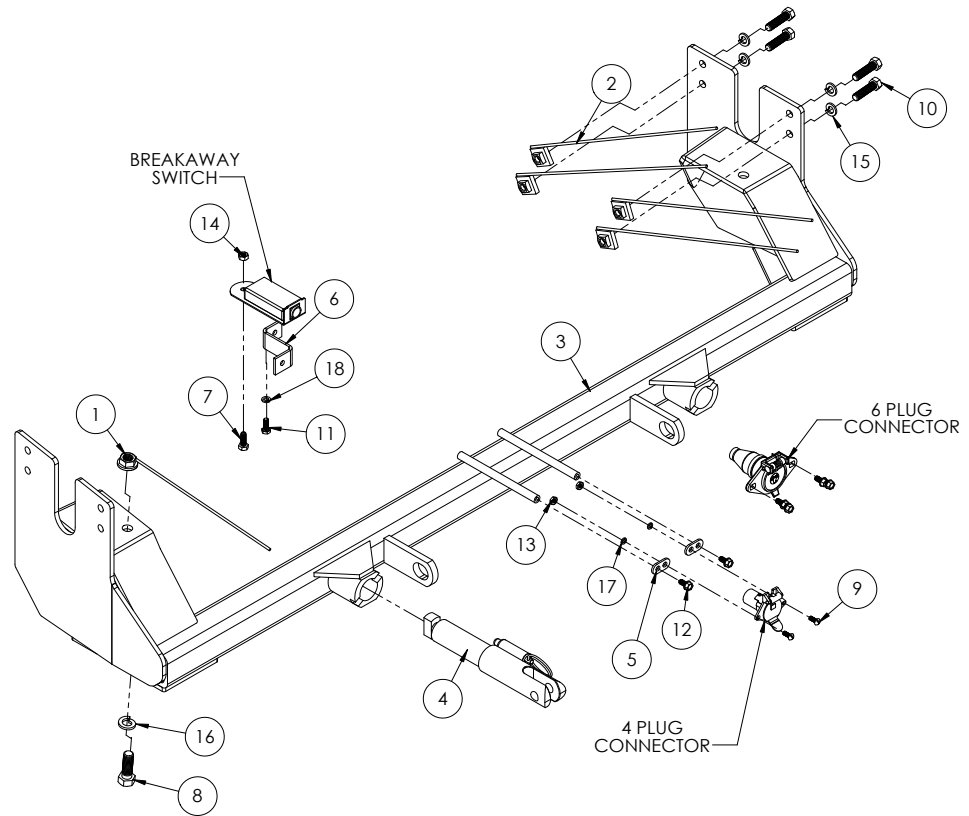
BX2627

2011-14 Ford Explorer (No Adaptive Cruise Control)

Installation Instructions

Tools Required

Large Vise Grip
 Flat Screwdriver
 Utility Knife
 Phillips Screwdriver
 Torque Wrench
 Drill
 Tape Measure
 Loctite® RED
 13/32" Drill Bit
 17/32" Drill Bit
 8MM Socket
 10MM Socket
 11MM Socket
 9/16" Socket
 3/4" Socket
 5.5MM Socket



Item No.	Part No.	Description	Qty.
1.....	61-4029	1/2"-13 Nut Plate with 10" Wire	2
2.....	61-5208	3/8"-16 Nut Plate with 14" Wire	8
3.....	61-6836	BX2627 Baseplate.....	1
4.....	62-3468	Attachment Tab with Hole.....	2
5.....	101-5822	4 Way Connector Adapter	2
6.....	102-7056	Breakaway Bracket.....	1
7.....	201-0050	1/4"-20 x 3/4" Hex Head Bolt, Grade 5, ZP	1
8.....	201-0051	1/2"-13 x 1-1/2" Hex Head Bolt, Grade 5, ZP	2
9.....	201-0192	#10-32 1/2" Round Slotted Head Screw.....	2
10.....	201-0440	3/8"-16 x 1-1/2" Hex Head Bolt, Grade 5, ZP	8
11.....	201-0461	6MM-1.0 x 16MM Hex Cap Bolt, Grade 8.8, ZP	1
12.....	201-0553	1/4"-20 x 1/2" Hex Wshd Type F TCS Screw, ZP	2
13.....	202-0047	#10-32 Hex Nut	2
14.....	202-0102	1/4"-20 Hex Nylon Insert Nut, ZP	1
15.....	203-0010	3/8" Lock Washer, ZP	8
16.....	203-0012	1/2" Lock Washer, ZP	2
17.....	203-0054	#10 Lock Washer, ZP	2
18.....	203-0161	6MM Lock Washer, ZP	1
19 (not shown).....	226-0049	36" Class IV Baseplate Safety Cable	2
20 (not shown).....	229-0512	1/2" Quicklink, ZP	2
21 (not shown).....	290-0437	Black Cap Plug Receiver.....	2
22 (not shown).....	107-1760	3/4" OD Spacer Tube.....	3
23 (not shown).....	201-0702	6MM-1.0 x 45MM Hex Head Bolt, Grade 8.8, ZP.....	1

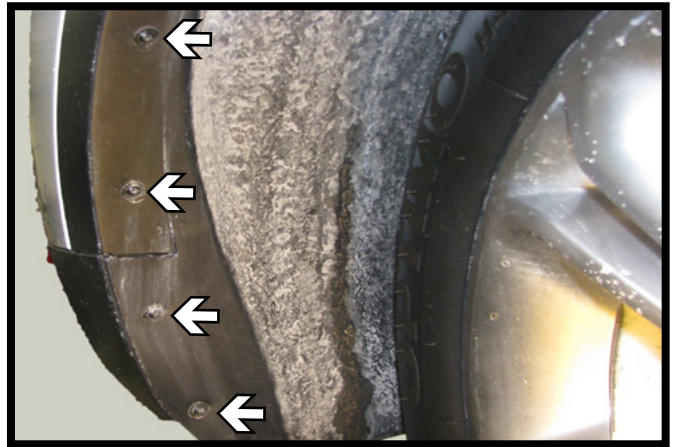
Important:

Use only genuine factory replacement parts on your baseplate. Do **NOT** substitute homemade or non-typical parts. If a bolt is lost or in need of replacement, for your safety and the preservation of your baseplate, be sure to use a replacement bolt of the same grade (In most cases it will be Grade 5, please reference the parts list above). Replacement parts may be ordered through your nearest Blue Ox® Dealer or Distributor. Failing to follow and/or altering these installation instructions in either installation or required equipment will void the manufacturer's warranty. Towing behind a non-motorized vehicle will void the warranty.

BX2627
2011-14 Ford Explorer (No Adaptive Cruise Control)
Installation Instructions



1. Using a 10MM socket, remove three (3) screws (white arrows) from the plastic cover on the top side of the fascia. Also remove the push pin (gray arrow). Do this to both sides of the vehicle. On the passenger side, there will be four (4) screws to remove.



2. In front of the tire, using a Phillips screw driver or 5.5MM socket, remove the four (4) pushpins. Do this to both sides of the vehicle.

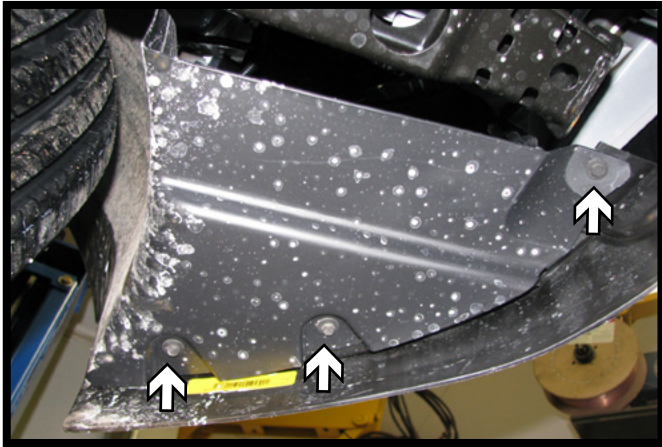


3. Just forward of the front tire pull the cover back, remove the screw. Do this to both sides of the vehicle.

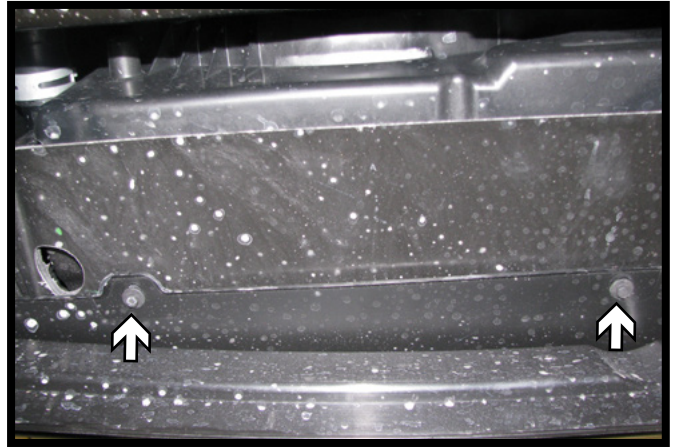


4. Just forward of the front tire on the fascia's corner pry loose the protective rubber edging, remove the screw with a Phillips screwdriver or 5.5MM socket. Do this on both sides of the vehicle.

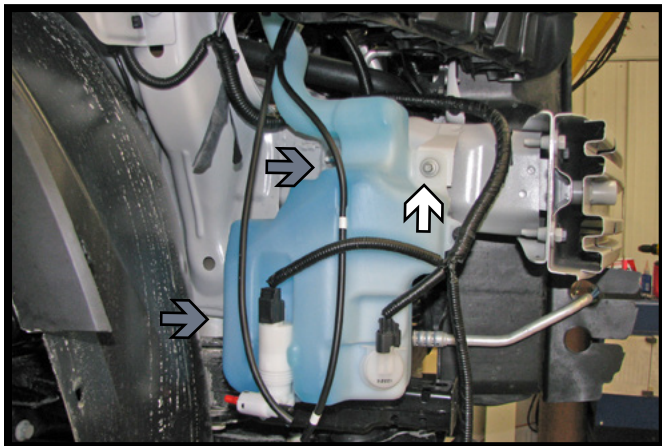
BX2627
2011-14 Ford Explorer (No Adaptive Cruise Control)
Installation Instructions



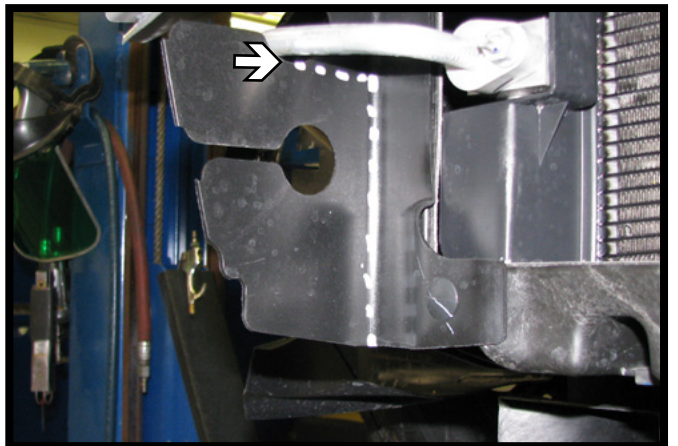
5. Underneath the fascia in the corner in front of the tire, using an 8MM socket remove three (3) screws. Do this on both sides of the vehicle.



6. Underneath the vehicle going across, using an 8MM socket, remove the three (3) screws from the front of the fascia. Pull the fascia corners down, then forward to release. Disconnect electrical connections. Set the fascia aside.

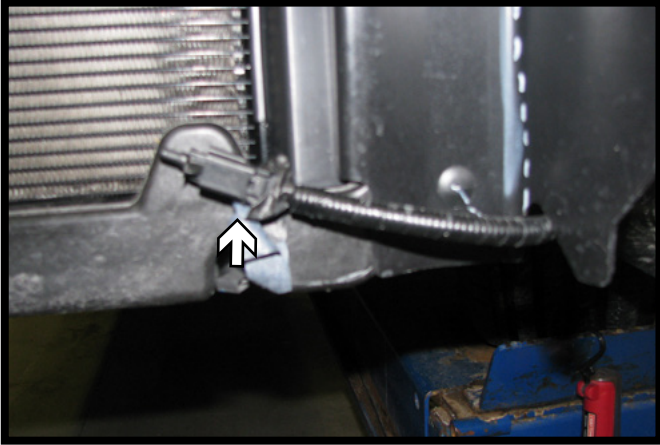


7. Using an 8MM socket, remove the bolt on the top (white). Using an 11MM socket, remove the two (2) bolts on the sides (gray). Remove the windshield washer reservoir, disconnect the two hoses and plug them.

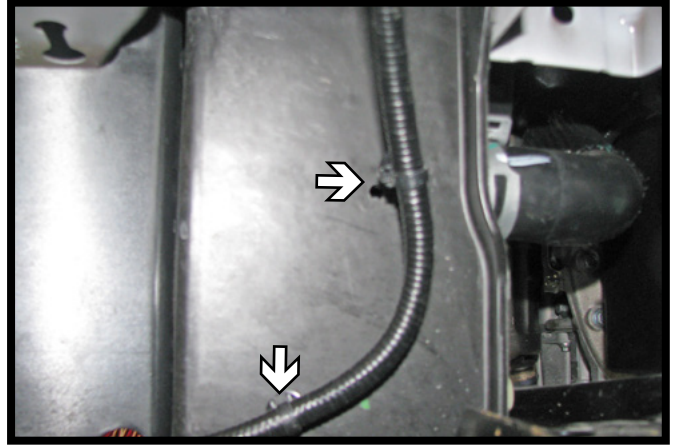


8. Trim the air dam by cutting across and down. Do this on both sides.

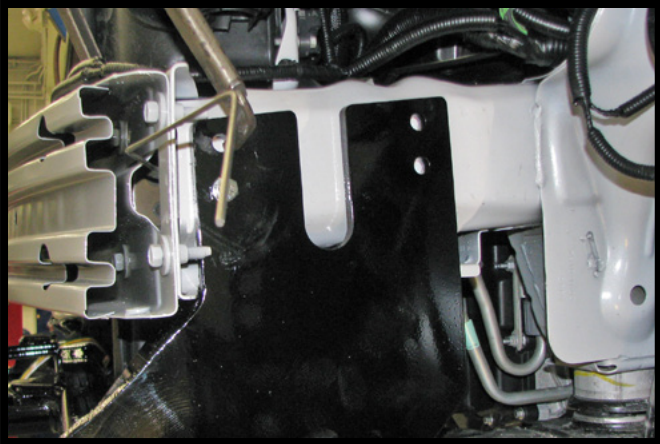
BX2627
2011-14 Ford Explorer (No Adaptive Cruise Control)
Installation Instructions



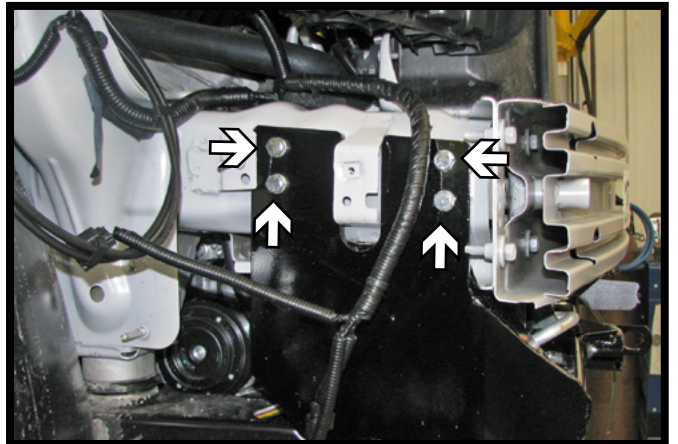
9. On the driver side, disconnect and move the temperature sensor.



10. On the driver side, pull the two (2) clips and move the sensor cord aside.

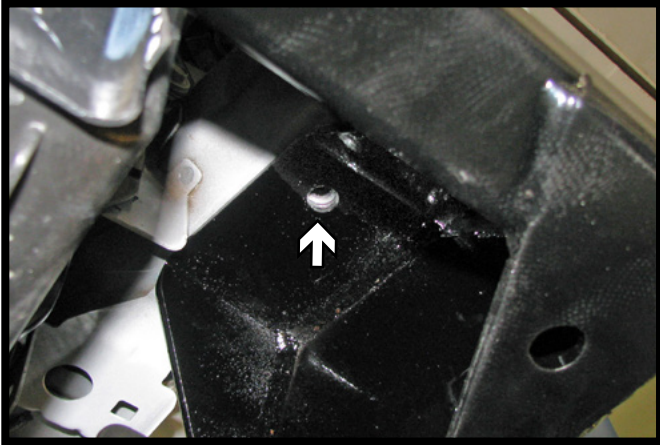


11. Tip the baseplate into position just behind the weld of the bumper bracket. Level and clamp in place. Using the baseplate as a template, drill the four (4) holes into the frame rail with a 13/32" drill bit. Do this on both sides of the vehicle.

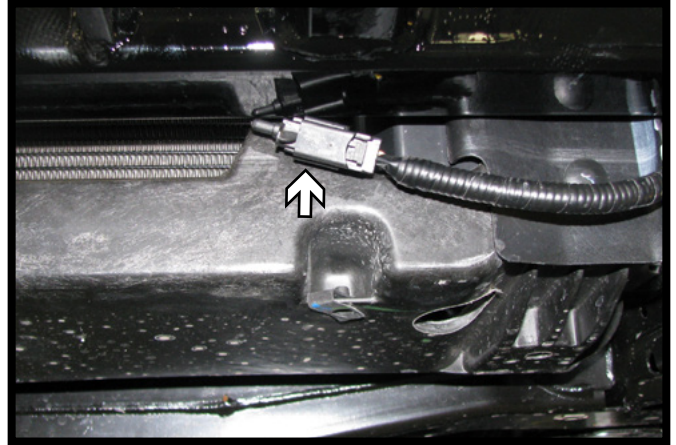


12. Insert four (4) 3/8"-16 x 1-1/2" bolts with 3/8" lock washers and 3/8"-16 nut plates aligned inside the frame rail. Do this on both sides of the vehicle. Tighten all fasteners.

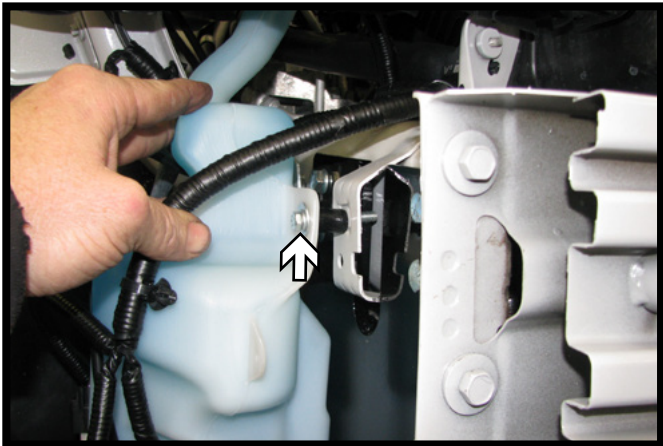
BX2627
2011-14 Ford Explorer (No Adaptive Cruise Control)
Installation Instructions



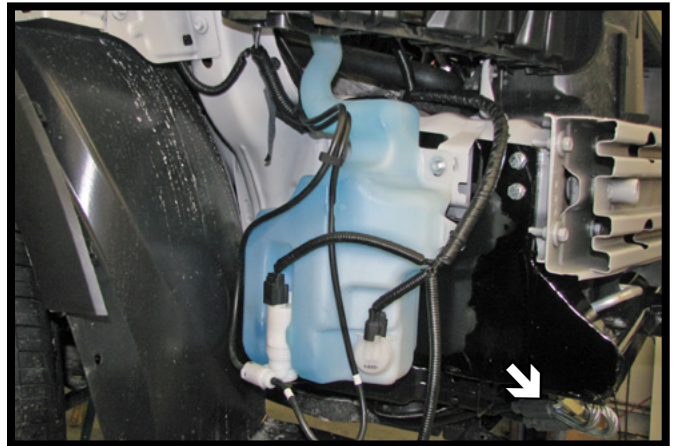
13. Using the baseplate as a template, drill a hole underneath with a 17/32" drill bit. Install a 1/2"-13 x 1-1/2" bolt and 1/2" lock washer with 1/2" wire nut. Do this on both sides of the vehicle.



14. Reattach the sensor underneath the baseplate. Reattach the clips holding the cord.

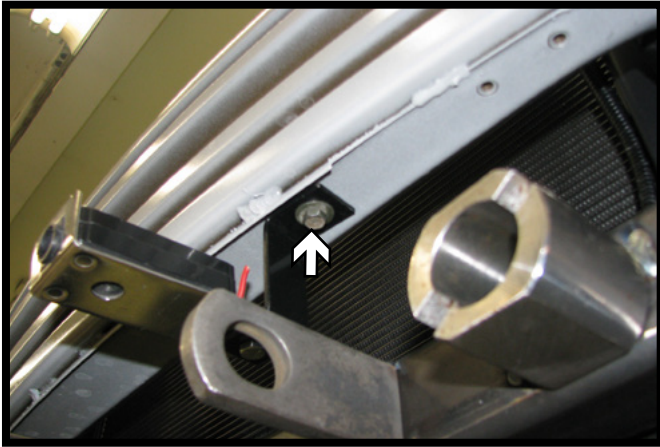


15. Reattach the windshield washer reservoir, using a 6MM-1.0 x 45MM bolt on the top front hole with 3/4" spacer tubes on all three (3) bolts.

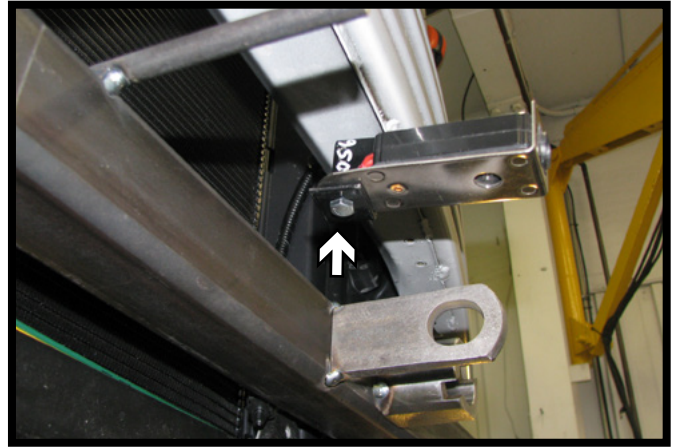


16. Attach the permanent baseplate safety cables to the provided convenience link on the baseplate. The photo above shows the recommended installation of the cables to frame of vehicle. Additional options may interfere with suggested mounting; in this case, secure the cables to a solid piece of the frame as described in the instructions included with the permanent baseplate safety cables. Be sure the safety cables do not rub against any hoses or moving parts. Do this on **BOTH** sides of the vehicle.

BX2627
2011-14 Ford Explorer (No Adaptive Cruise Control)
Installation Instructions



17. Mount the breakaway bracket to the underside of the bumper, using a 6MM-1.0 x 16MM bolt and 6MM lock washer.



18. Attach the breakaway to the bracket with 1/4-20 x 3/4" hex bolt and 1/4-20 hex nut.
19. Reinstall the fascia.

CUSTOMER SERVICE COMMITMENT

Blue Ox® is committed to providing you with exceptional customer care throughout your lifetime with our products. Our team is here to assist you with any questions you may have regarding the performance of your product. Simply call (402) 385-3051 and you can speak with our customer care team.

Additionally, please visit our website to see which rallies our Destination America team will be attending. For a nominal fee, our service technician will service your towing system to ensure it's in proper working condition. Also, as a commitment to our customers, should you visit our factory, you can stay at our full service Blue Ox® campground at no charge along with enjoying a factory tour.

Again, thank you for being our customer and for the confidence you have shown in the performance of our products. It is because of customers like you we enjoy the success we have today.

© 2012 Blue Ox
One Mill Road, Industrial Park
Pender, Nebraska 68047
Phone: (402) 385-3051
Fax: (402) 385-3360
www.blueox.com