

**BX2637**

2013 Lincoln MKT w/Adaptive Cruise 2013 Ford Flex w/Adaptive Cruise & EcoBoost Installation Instructions

Serial Number

Please read BOTH these Installation Instructions and the General Instructions prior to installing or operating this equipment.

Attachment Tab Height: 16"**Attachment Tab Width: 20"**

1. Blue Ox® towing products and accessories are intended to be installed by Blue Ox® Dealers who are familiar with our products and have the equipment and knowledge necessary to do "fit work". If needed, Blue Ox® Dealers can be found at www.blueox.com or by contacting our Customer Care Department at (402) 385-3051.
2. Many Blue Ox® baseplates are designed to use existing holes and hardware to mount the baseplate to the towed vehicle. Even though bolts are there, do not assume they are adequate for baseplate mounting. Always use the hardware supplied in the hardware kit and existing hardware as specified in the installation instructions.



If the front of your vehicle looks different than these, please contact us at (402)385-3051.

Reference your vehicle owner's manual for manufacturer's towing specifications.

Bolt Torque Specifications

Torque in Foot-Pounds for Inch Bolts

Bolt Size	Grade 5	Grade 8
1/4"	10	14
5/16"	19	29
3/8"	33	47
7/16"	54	78
1/2"	78	119
5/8"	154	230
3/4"	257	380

Bolt Torque Specifications

Torque in Foot-Pounds for Metric Bolts

Bolt Size	Grade 8.8	Grade 10.9
6MM	6	8
8MM	16	22
10MM	31	40
12MM	54	70
14MM	89	117
16MM	161	230
18MM	222	318



WARNING

Failure to read and follow these instructions could result in separation of the towed vehicle from the tow bar, causing property damage, loss of towed vehicle, personal injury or death.

BX2637
2013 Lincoln MKT w/ Adaptive Cruise
2013 Ford Flex w/ Adaptive Cruise & EcoBoost
Installation Instructions

Instruction Notes: The fascia, air horn and windshield washer fluid reservoir are removed and reinstalled for the baseplate installation. Some drilling and trimming is required.

Place all components that are removed on a flat, sturdy surface. All items will be reinstalled unless otherwise noted after the baseplate is installed.

The dimensional variations between otherwise identical vehicles can be considerable. While the baseplate was designed for easy installation, it may be necessary to tailor the baseplate slightly to compensate for vehicle manufacturer's tolerances.

The BX8848 Tail Light Wiring Kit is recommended for this vehicle.

NOTICE

- Handling of some cosmetic parts when installing this product may require the use of protective covers, rags, specialty tools, etc. to prevent damage.
- When using power drills be aware of the dangers of torque and drill bit length.
- When using a reciprocating saw be aware of objects behind the cutting surface.
- Use a good quality paint to spray cut edges of frame to prevent rusting.
- Be sure that **ALL** electrical connections are plugged in and accessories are functioning properly before reinstalling the fascia.
- Do not use the towed vehicle for storing luggage, equipment, etc. This may cause you to exceed the towing capacity of the tow bar, baseplate and its accessories.
- Be sure to use Loctite® Red on all bolts before tightening. Tighten all bolts according to the torque chart provided.
- Dealer or installer be certain the user receives these instruction sheet.
- If the baseplate is in an accident, it must be replaced. **DO NOT** use it again! An accident can cause unseen damage and using it again could result in more damage or serious injury. **DO NOT** use the baseplate if it is damaged or missing parts.

BX2637

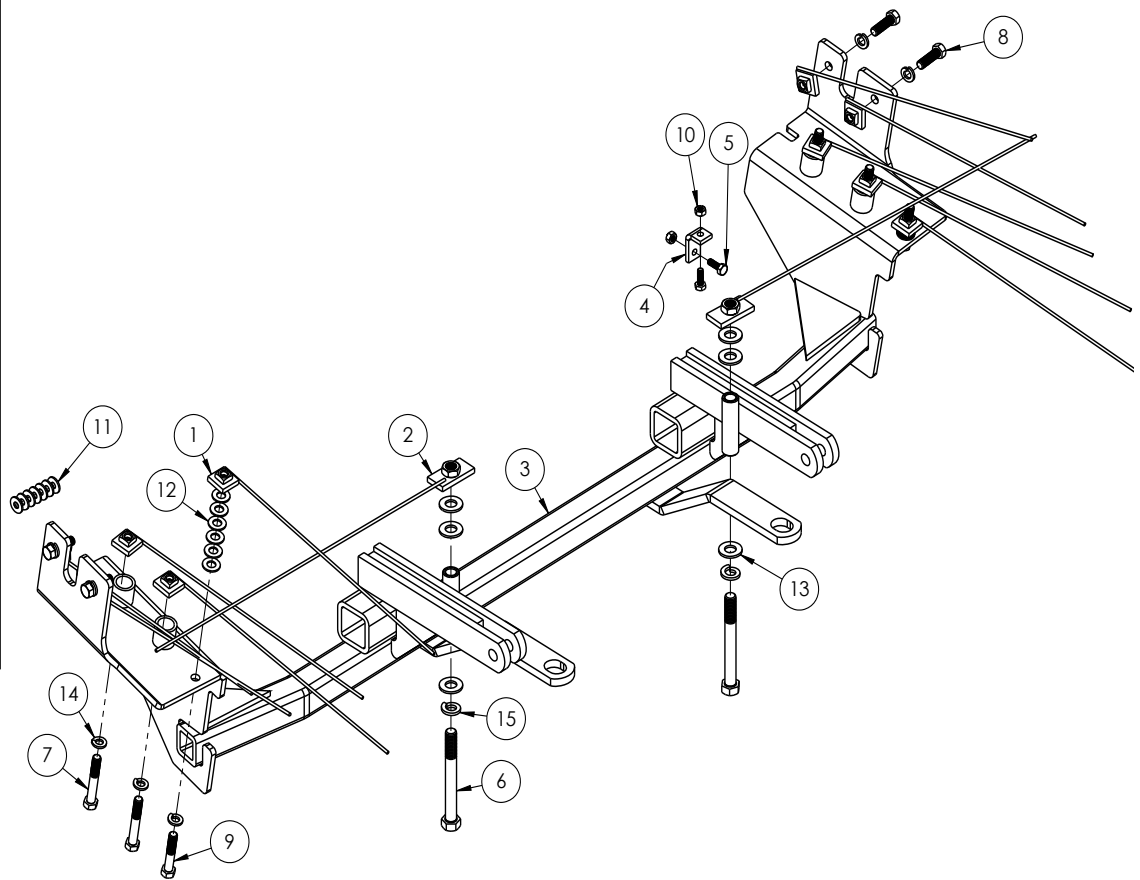
2013 Lincoln MKT w/ Adaptive Cruise

2013 Ford Flex w/ Adaptive Cruise & EcoBoost

Installation Instructions

Tools Required

5.5MM Socket
 8MM Socket
 10MM Socket
 9/16" Socket
 Large Vise Grip
 Phillips Screwdriver
 Flat Screwdriver
 Utility Knife
 Hammer
 Torque Wrench
 Tape Measure
 1/4" Drill Bit
 13/32" Drill Bit
 17/32" Drill Bit
 Drill
 Recircating Saw
 Loctite® Red



Item No.	Part No.	Description	Qty.
1.....	61-5208.....	3/8"-16 Nut Plate with 14" Wire	10
2.....	61-5496.....	1/2" Nut Plate with Wire.....	2
3.....	61-7072.....	BX2637 Baseplate.....	1
4.....	102-7401.....	BX2637 Support Bracket.....	1
5.....	201-0050.....	1/4"-20 x 3/4" Hex Head Bolt, Grade 5, ZP	2
6.....	201-0147.....	1/2"-13 x 4-1/2" Hex Head Bolt, Grade 5, ZP	2
7.....	201-0336.....	3/8"-16 x 2-1/2" Hex Head Bolt, Grade 5, ZP	4
8.....	201-0368.....	3/8"-16 x 1-1/4" Hex Head Bolt, Grade 5, ZP	4
9.....	201-0444.....	3/8"-16 x 2" Hex Head Bolt, Grade 5, ZP	2
10.....	202-0102.....	1/4"-20 Hex Nylon Nut, ZP	2
11.....	203-0001.....	1/4" Flat Washer, ZP.....	7
12.....	203-0003.....	3/8" Flat Washer, ZP.....	12
13.....	203-0005.....	1/2" Flat Washer, ZP.....	6
14.....	203-0010.....	3/8" Lock Washer, ZP	10
15.....	203-0012.....	1/2" Lock Washer, ZP	2
16.....	226-0046(not shown)	Class III Safety Cables	2
17.....	229-0359(not shown)	3/8" Quicklink, ZP	2

Important:

Use only genuine factory replacement parts on your baseplate. Do **NOT** substitute homemade or non-typical parts. If a bolt is lost or in need of replacement, for your safety and the preservation of your baseplate, be sure to use a replacement bolt of the same grade (In most cases it will be Grade 5, please reference the parts list above). Replacement parts may be ordered through your nearest Blue Ox® Dealer or Distributor. Failing to follow and/or altering these installation instructions in either installation or required equipment will void the manufacturer's warranty. Towing behind a non-motorized vehicle will void the warranty.

BX2637
2013 Lincoln MKT w/ Adaptive Cruise
2013 Ford Flex w/ Adaptive Cruise & EcoBoost
Installation Instructions

FASCIA & GRILLE REMOVAL FOR LINCOLN MKT ONLY



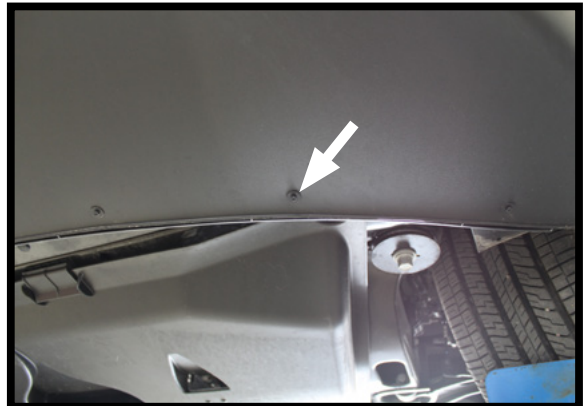
1. Using a 10MM socket, remove one (1) bolt from the top of the fascia. Remove the two (2) screws using a Phillips screwdriver. Do this on both sides of the vehicle.



2. Remove the three (3) bolts that are located just forward of the front tire using a 5.5MM socket. Do this on sides of the vehicle.



3. There are three (3) large push pins located on the underside of the vehicle. Use a flat screwdriver to remove them.



4. Using a 5.5MM socket, remove the seven (7) bolts that are located on the underside towards the front of the vehicle.

After grille and fascia are removed continue to page 6

BX2637
2013 Lincoln MKT w/ Adaptive Cruise
2013 Ford Flex w/ Adaptive Cruise & EcoBoost
Installation Instructions

FASCIA & GRILLE REMOVAL FOR FORD FLEX ONLY



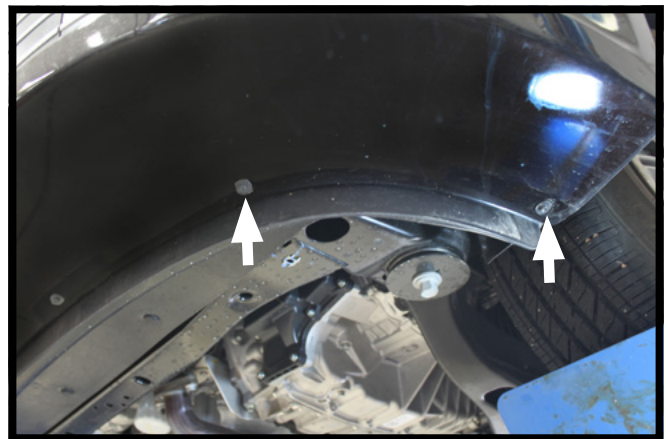
1. Remove the two (2) 10MM (white) and two (2) phillips head (gray) screws from the top of the grille. Then using a straight screwdriver pop out the chrome trim insert from the grille.



2. Remove the two (2) 10MM screws from face of the grille. Remove the grille from vehicle and set aside for later installation.

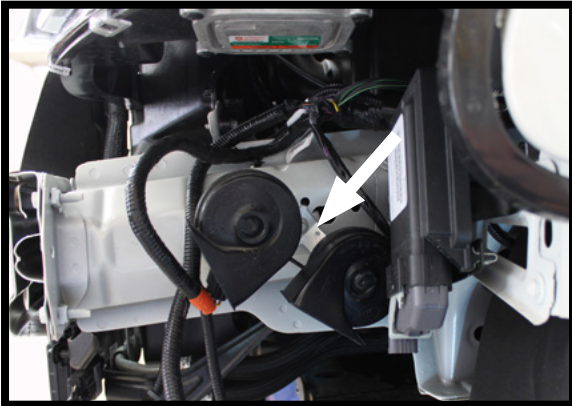


3. Remove the three (3) 5.5MM screws from the wheel well. (3A) Remove the push pin located on the inside corner of the wheel well. (3B) Repeat on other side of vehicle.



4. Remove the eight (8) 5.5MM screws from underside of the fascia. Remove the fascia from vehicle and set aside for later installation.

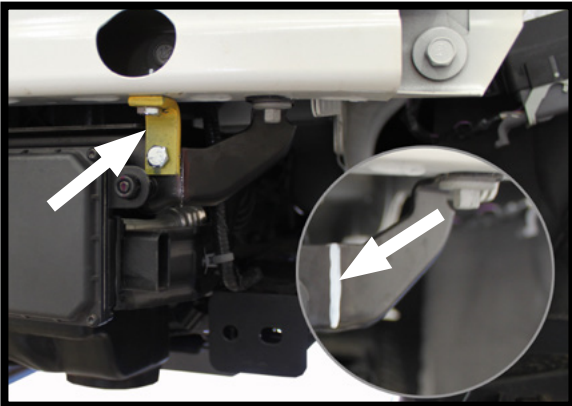
BX2637
2013 Lincoln MKT w/ Adaptive Cruise
2013 Ford Flex w/ Adaptive Cruise & EcoBoost
Installation Instructions



5. On the driver's side, use an 8MM socket to remove the horn bolt bracket. Bend it slightly over to the side temporarily.

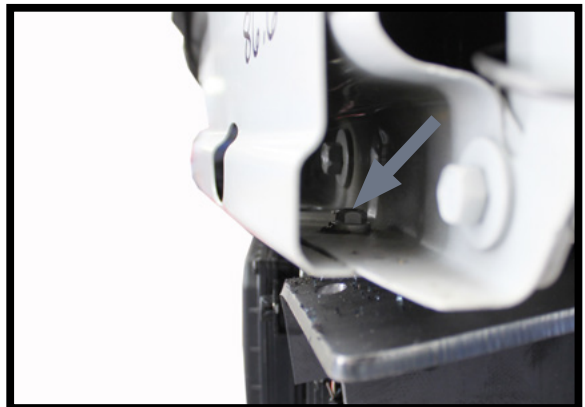


6. On the passenger's side, remove the windshield washer fluid reservoir using a 10MM socket to remove three (3) bolts. There are two (2) on the front of the reservoir and one (1) towards the back.



7. On the driver side, install the support bracket onto the bumper and ACC sensor bracket as shown. Mark and drill the holes with a 1/4" drill bit. Attach the bracket with 1/4"-20 x 3/4" bolts and 1/4"-20 lock nuts.

Once the bracket is installed, use a reciprocating saw to remove the outer edge of the ACC bracket (inset).



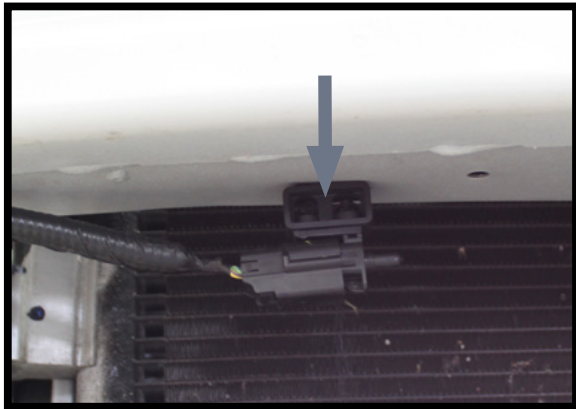
8. Using a hammer and flat screwdriver, remove the nut on the inside of the bumper on the driver's side.



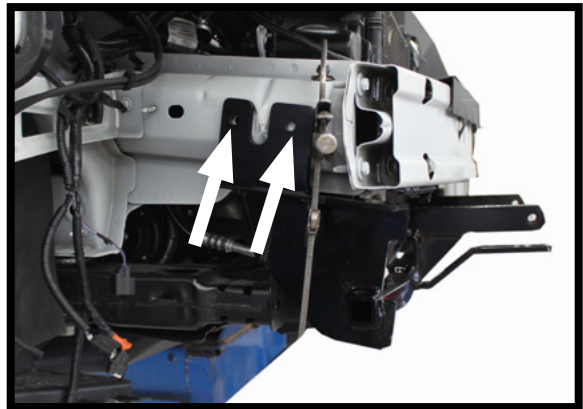
9. On the passenger's side, unclip the air temperature sensor from the bumper.

Remove the top block.

BX2637
2013 Lincoln MKT w/ Adaptive Cruise
2013 Ford Flex w/ Adaptive Cruise & EcoBoost
Installation Instructions



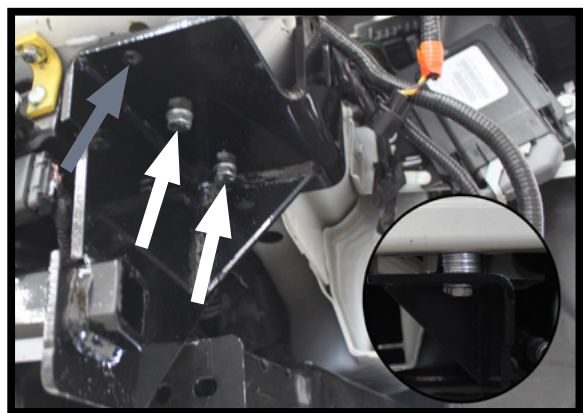
10. Reclip the air temperature sensor to the bumper.



11. Securely clamp the baseplate onto the vehicle's bumper. Make sure the baseplate is level. Then use the baseplate as a template and drill the sides holes with a $\frac{13}{32}$ " drill bit. Install the $\frac{3}{8}$ "-16 x 1" hex head bolts, $\frac{3}{8}$ " lock washers and $\frac{3}{8}$ "-16 nut plates. Do this on both sides of the vehicle.



12. Drill a hole thru the bumper with a $\frac{17}{32}$ " drill bit, using the tube as a guide. Install a $\frac{1}{2}$ "-13 x 4- $\frac{1}{2}$ " bolt, $\frac{1}{2}$ " lock and flat washer, with a $\frac{1}{2}$ " nut plate inside the bumper. Do this on both sides of the vehicle.



13. Drill the bottom holes using a $\frac{13}{32}$ " drill bit. The outer most hole requires six (6) $\frac{3}{8}$ " flat washers for spacers (gray). Do this on both sides of the vehicle.

BX2637
2013 Lincoln MKT w/ Adaptive Cruise
2013 Ford Flex w/ Adaptive Cruise & EcoBoost
Installation Instructions



14. Prior to reinstalling the windshield washer fluid reservoir, notch the reservoir as shown.



15. Reconnect the windshield wiper fluid reservoir using the existing fasteners. Use the seven (7) 1/4" flat washers that were provided as spacers on the innermost hole.

16. Attach the permanent baseplate safety cables to the provided convenience link on the baseplate. Additional options may interfere with suggested mounting; in this case, secure the cables to a solid piece of the frame as described in the instructions included with the permanent baseplate safety cables. Be sure the safety cables do not rub against any hoses or moving parts. Do this on both sides of the vehicle.

17. Reinstall the horn, front fascia and grille . The horn may require bending slightly for clearance purpose.

Important: Ensure that nothing is installed in front of the ACC sensor (Refer to Step #7 picture). Obstructions will cause false readings from the sensor.

CUSTOMER SERVICE COMMITMENT

Blue Ox® is committed to providing you with exceptional customer care throughout your lifetime with our products. Our team is here to assist you with any questions you may have regarding the performance of your product. Simply call (402) 385-3051 and you can speak with our Customer Care team.

Additionally, please visit our website to see which rallies our Destination America team will be attending. For a nominal fee, our service technician will service your towing system to ensure it's in proper working condition. Also, as a commitment to our customers, should you visit our factory, you can stay at our full service Blue Ox® campground at no charge along with enjoying a factory tour.

Again, thank you for being our customer and for the confidence you have shown in the performance of our products. It is because of customers like you we enjoy the success we have today.

© 2012 Blue Ox
One Mill Road, Industrial Park
Pender, Nebraska 68047
Phone: (402) 385-3051
Fax: (402) 385-3360
www.blueox.com