

**BX3332**

2008-10 Saturn Vue and Redline 2012-13 Chevy Captiva Sport Installation Instructions

Serial Number

Attachment Tab Height: 21-1/2"**Attachment Tab Width: 18-1/2"**

Please read BOTH these Installation Instructions and the General Instructions prior to installing or operating this equipment.

1. Blue Ox® towing products and accessories are intended to be installed by Blue Ox® Dealers who are familiar with our products and have the equipment and knowledge necessary to do "fit work". If needed, Blue Ox® Dealers can be found at www.blueox.com or by contacting our Customer Care Department at (402) 385-3051.
2. Many Blue Ox® baseplates are designed to use existing holes and hardware to mount the baseplate to the towed vehicle. Even though bolts are there, do not assume they are adequate for baseplate mounting. Always use the hardware supplied in the hardware kit and existing hardware as specified in the installation instructions.



If the front of your vehicle looks different than this, please contact us at (402)385-3051.

Bolt Torque Specifications

Torque in Foot-Pounds for Metric Bolts

Bolt Size	Grade 8.8	Grade 10.9
6MM	6	8
8MM	16	22
10MM	31	40
12MM	54	70
14MM	89	117

Bolt Torque Specifications

Torque in Foot-Pounds for Inch Bolts

Bolt Size	Grade 5	Grade 8
1/4"	10	14
5/16"	19	29
3/8"	33	47
7/16"	54	78
1/2"	78	119
5/8"	154	230

Reference your vehicle owner's manual for manufacturer's towing specifications.



WARNING

Failure to read and follow these instructions could result in separation of the towed vehicle from the tow bar, causing property damage, loss of towed vehicle, personal injury or death.

BX3332
2008-10 Saturn Vue and Redline
2012-13 Chevy Captiva Sport (w/Foglights)
Installation Instructions

Instruction Notes: The fascia, hood latch, air baffle, air dams, windshield washer fluid reservoir and (if equipped) coolant lines are removed and reinstalled for the baseplate installation. Some drilling and trimming is required.

Place all components that are removed on a flat, sturdy surface. All items will be reinstalled unless otherwise noted after the baseplate is installed.

The dimensional variations between otherwise identical vehicles can be considerable. While the baseplate was designed for easy installation, it may be necessary to tailor the baseplate slightly to compensate for vehicle manufacturer's tolerances.

The BX8869 Tail Light Wiring Kit is recommended for this vehicle.



Drill a hole according to the tail light wiring kit instructions.

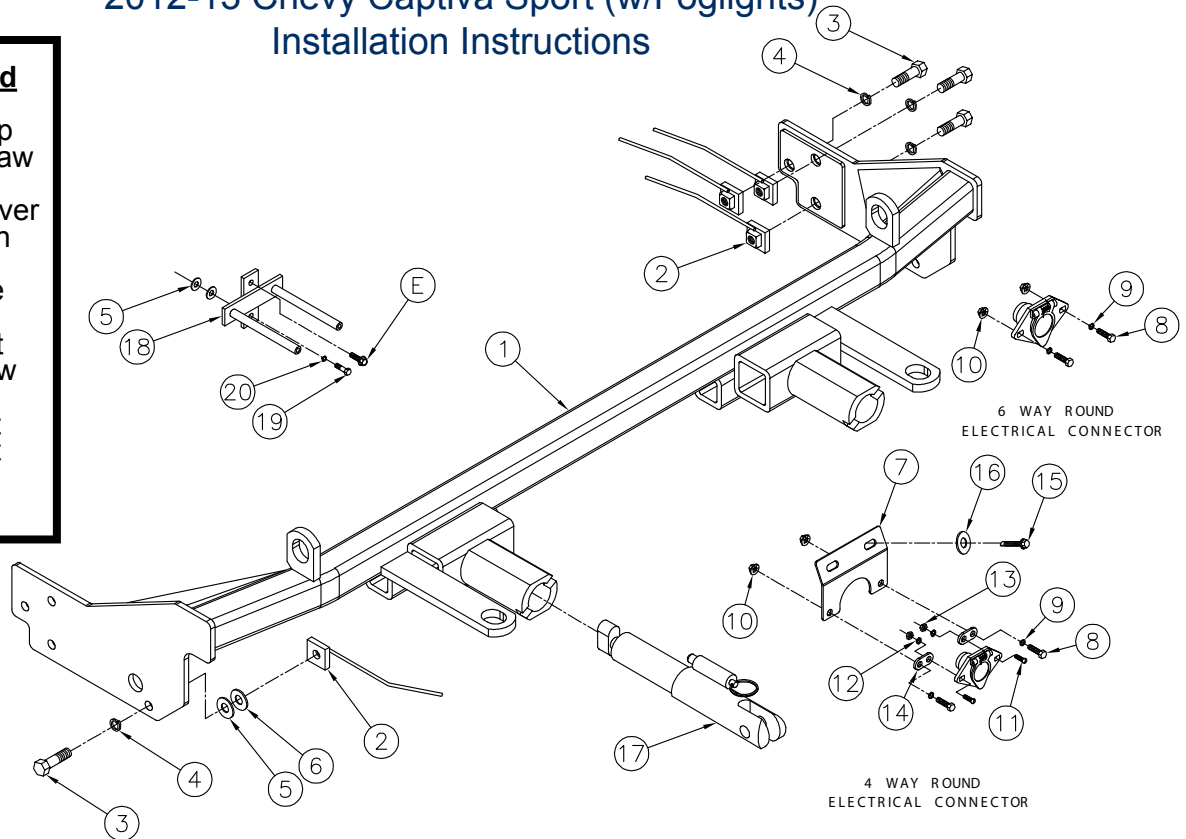
NOTICE

- Handling of some cosmetic parts when installing this product may require the use of protective covers, rags, specialty tools, etc. to prevent damage.
- When using power drills be aware of the dangers of torque and drill bit length.
- When using a reciprocating saw be aware of objects behind the cutting surface.
- Use a good quality paint to spray cut edges of frame to prevent rusting.
- Be sure that **ALL** electrical connections are plugged in and accessories are functioning properly before reinstalling the fascia.
- Do not use the towed vehicle for storing luggage, equipment, etc. This may cause you to exceed the towing capacity of the tow bar, baseplate and its accessories.
- Be sure to use Loctite® Red on all bolts before tightening. Tighten all bolts according to the torque chart provided.
- Dealer or installer be certain the user receives these instruction sheet.
- If the baseplate is in an accident, it must be replaced. **DO NOT** use it again! An accident can cause unseen damage and using it again could result in more damage or serious injury. **DO NOT** use the baseplate if it is damaged or missing parts.

BX3332
2008-10 Saturn Vue and Redline
2012-13 Chevy Captiva Sport (w/Foglights)
Installation Instructions

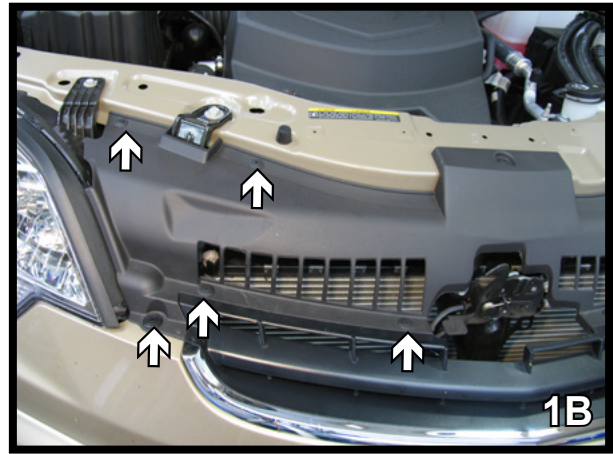
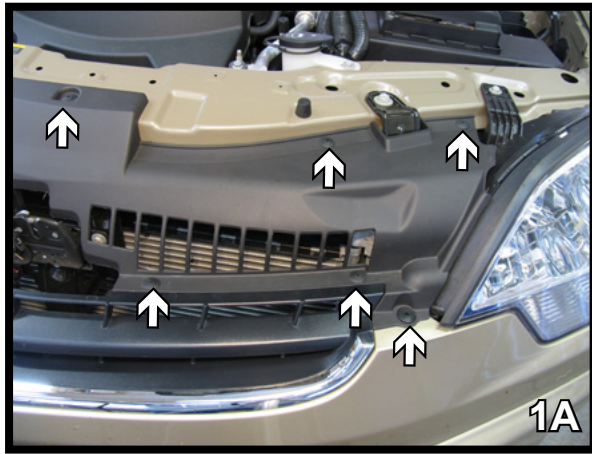
Tools Required

Large Vise Grip
Reciprocating Saw
Utility Knife
Phillips Screwdriver
Torque Wrench
Drill
Tape Measure
Loctite® RED
13/32" Drill Bit
1-1/4" Hole Saw
7MM Socket
10MM Socket
12MM Socket
9/16" Socket
9/16" Wrench

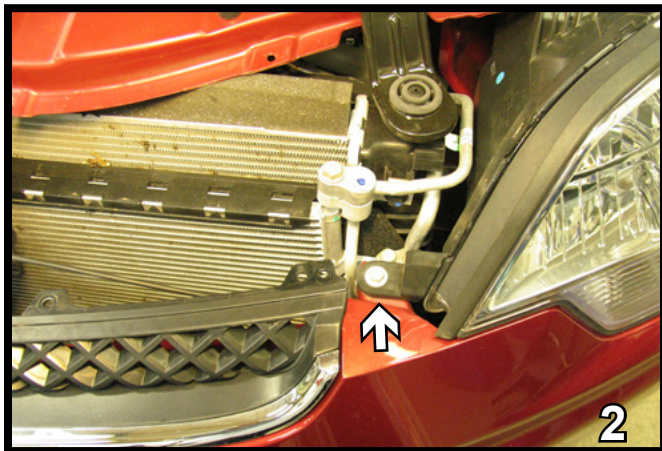


Item No.	Part No.	Description	Qty.
1.....	61-6416	BX3332 Baseplate.....	1
2.....	61-5208	3/8"-16 Nut Plate w/ Wire	8
3.....	201-0440	3/8"-16 x 1-1/2" Hex Head Bolt, Grade 5, ZP	8
4.....	203-0010	3/8" Lock Washer, ZP	8
5.....	203-0002	5/16" Flat Washer, ZP.....	6
6.....	203-0003	3/8" Flat Washer, ZP.....	4
7.....	101-6645	Electrical Bracket, 20 Degree	1
8.....	201-0050	1/4"-20 x 3/4" Hex Head Bolt, Grade 5, ZP	3
9.....	203-0008	1/4" Lock Washer, ZP	2
10.....	202-0069	1/4" Hex Flange Whiz Nut, ZP.....	2
11.....	201-0192	#10-32 x 1/2" Slotted Round Head Screw	2
12.....	203-0054	#10 Lock Washer.....	2
13.....	202-0047	#10-32 Hex Nut	2
14.....	101-5822	4 Way Adapter Connector	2
15.....	201-0654	#10-16 Self Drilling Screw, ZP.....	2
16.....	203-0001	1/4" Flat Washer, ZP.....	3
17.....	62-3469	Attachment Tab Assembly	2
18.....	61-6493	TT Frame Bracket.....	1
19.....	201-0655	6MM-1.0 x 30MM Hex Head Bolt, Grade 8.8, ZP	1
20.....	203-0161	6MM Lock Washer, ZP	1
21.....	226-0046(not shown)	Class III Safety Cables	2
22.....	229-0359(not shown)	3/8" Quicklink, ZP	4
23.....	290-0437(not shown)	Black Cap Plug Receiver.....	2
24.....	201-0553(not shown)	1/4"-20 x 1/2" Hex Type F TCS.....	2
25.....	202-0102(not shown)	1/4"-20 Hex Nylon Nut, ZP	1
E.....		Existing Bolt.....	1

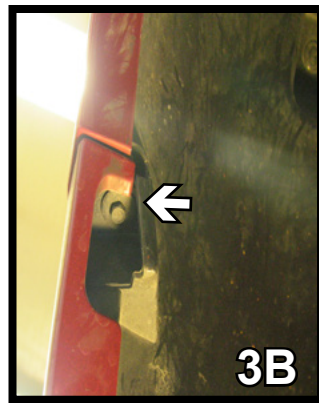
BX3332
2008-10 Saturn Vue and Redline
2012-13 Chevy Captiva Sport (w/Foglights)
Installation Instructions



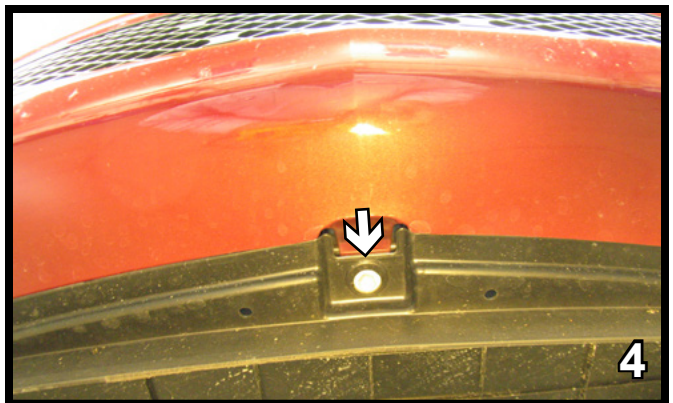
1. Using a phillips screwdriver, remove eleven (11) pushpins from the flat plastic piece on top of fascia.



2. Using a 10MM socket, remove bolt on top edge of fascia. Do this both sides.

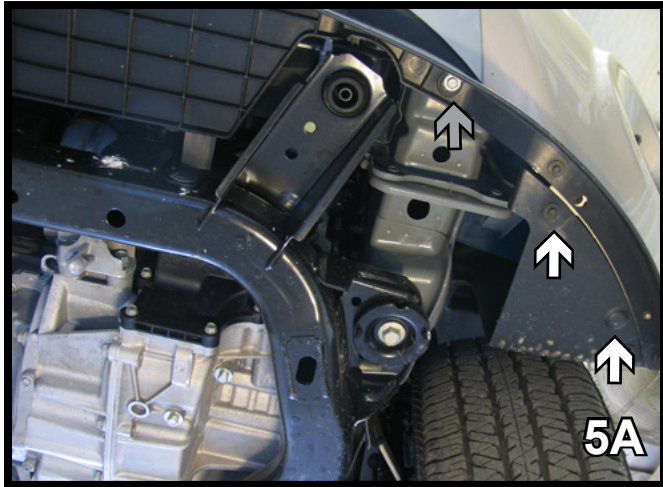


3. Using a 7MM socket, remove the screw just forward the front tire (3A). Up above forward the front tire, remove another screw (3B). Do this to both sides.



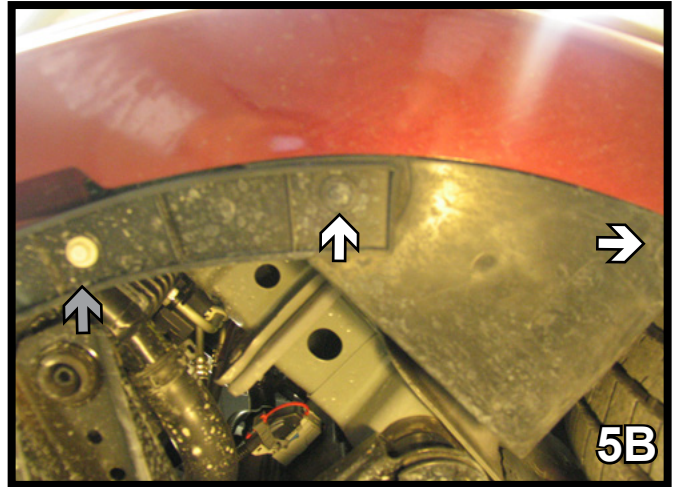
4. Using a 10MM socket, remove the screw directly below the license plate on the fascia. Further underneath are three (3) pushpins to remove.

BX3332
2008-10 Saturn Vue and Redline
2012-13 Chevy Captiva Sport (w/Foglights)
Installation Instructions



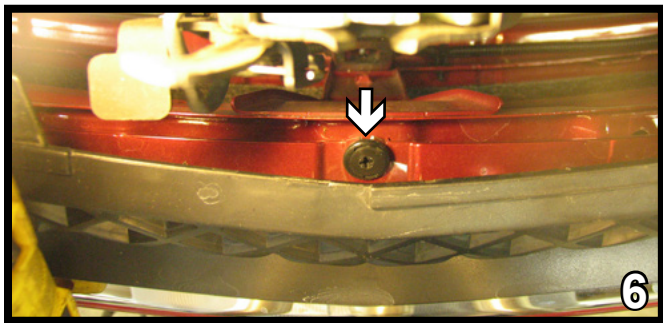
5. VUE/CAPTIVA MODELS

Just forward the front tire, underneath the fascia, use a 7MM socket to remove two (2) screws (white). Using a 10MM socket, remove one screw (gray) as shown. Do this to both sides of the vehicle.

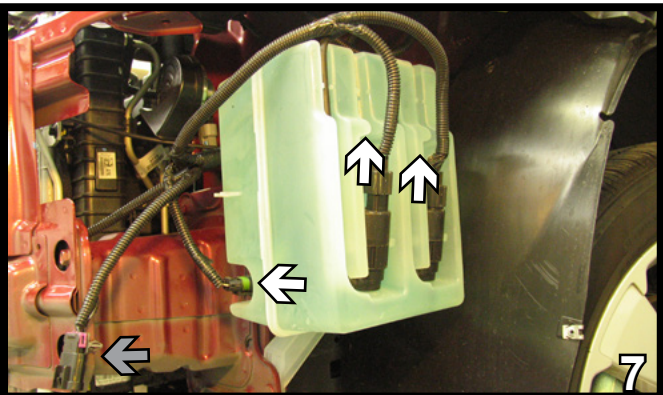


5. REDLINE MODEL

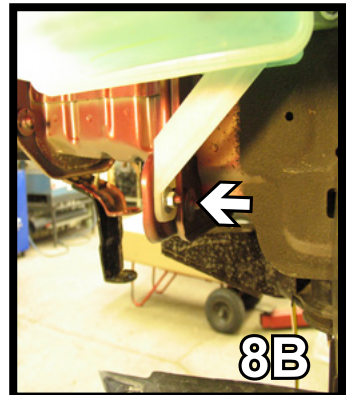
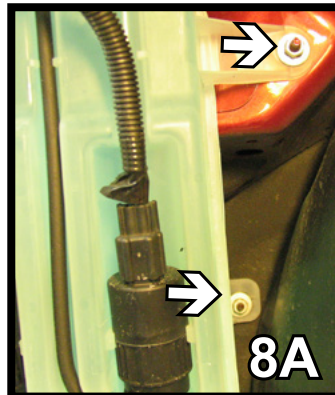
Just forward the front tire, underneath the fascia, use a 7MM socket to remove two (2) screws (white). Using a 10MM socket, remove one screw (gray) as shown. Do this to both sides of the vehicle.



6. Straight down in front of the latch and just behind upper grille, using a phillips screwdriver, remove the black push pin. Pull fascia corners out to the side of vehicle, both sides, then pull fascia forward and set aside carefully.

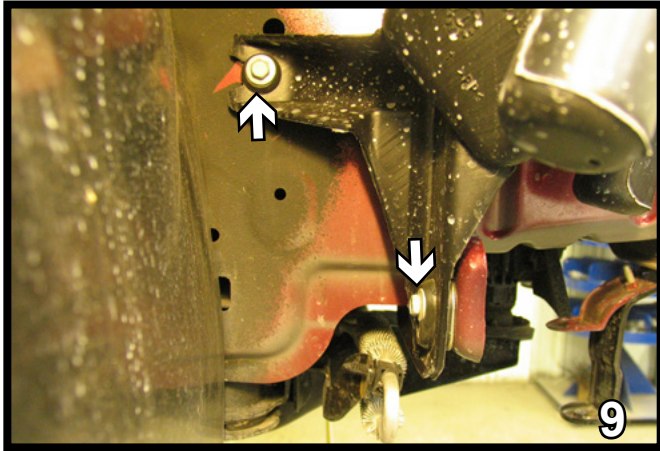


7. On the driver side, disconnect all hoses and electrical connections from the washer reservoir. Also unplug the one main plug in the front (gray arrow).

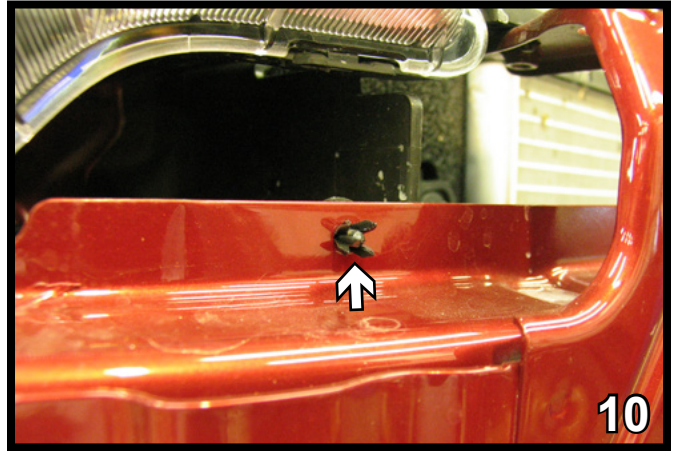


8. Using a 10MM socket, remove two (2) bolts just forward the front tire (8A) and the lower bolt (8B) to remove the washer reservoir.

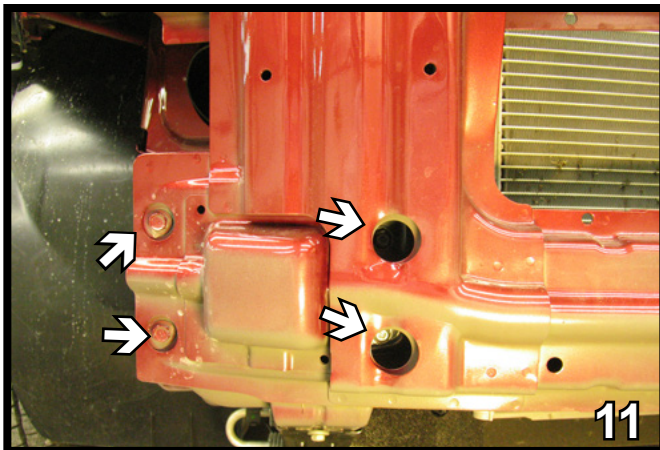
BX3332
2008-10 Saturn Vue and Redline
2012-13 Chevy Captiva Sport (w/Foglights)
Installation Instructions



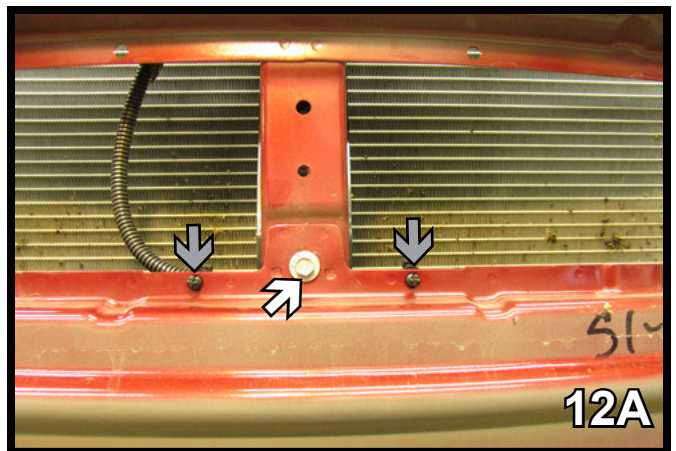
9. On the passenger side, using a 10MM socket, remove the two (2) bolts from the air baffle.



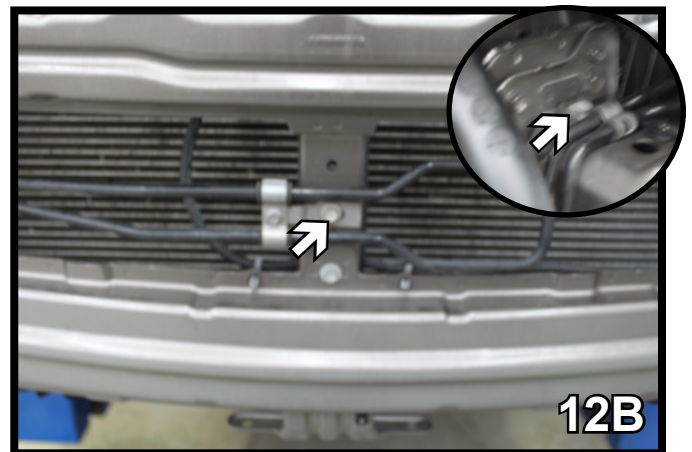
10. On the passenger side only, remove the push pin that is on the backside of bumper, just below the headlight, by pushing the center piece out.



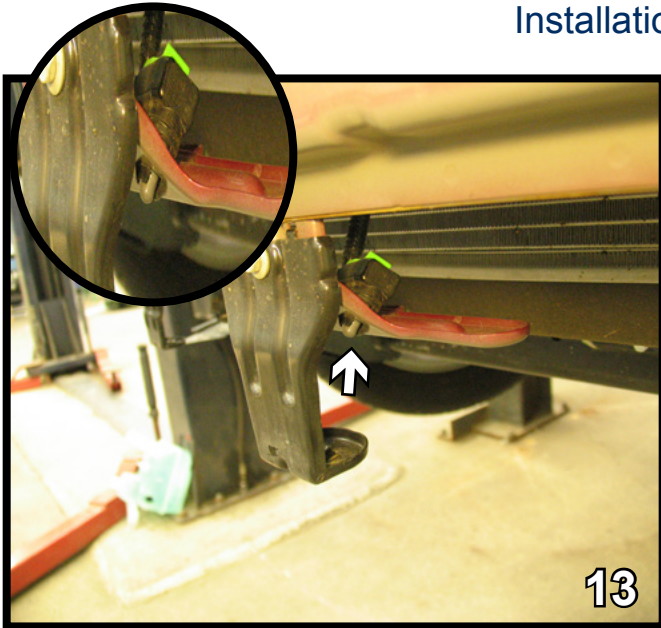
11. Remove four (4) bolts using a 12MM socket. Do this to both sides of the vehicle. Set aside metal bumper for later reinstallation.



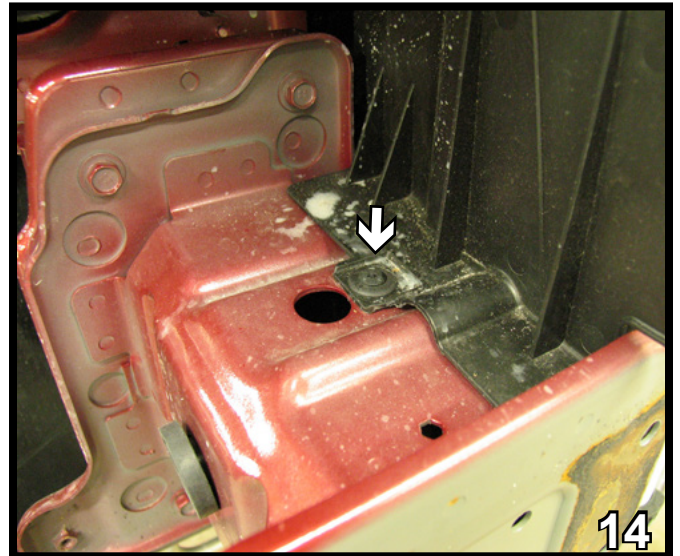
12. Using a 10MM socket, remove one (1) bolt from the center of metal H-frame bumper. Also remove two (2) pushpins located behind metal piece (gray arrows) from the wire harness (12A). If equipped, uninstall the coolant line bolts on the front of the vehicle and from the passenger side (12B). Carefully move the coolant line aside for baseplate installation.



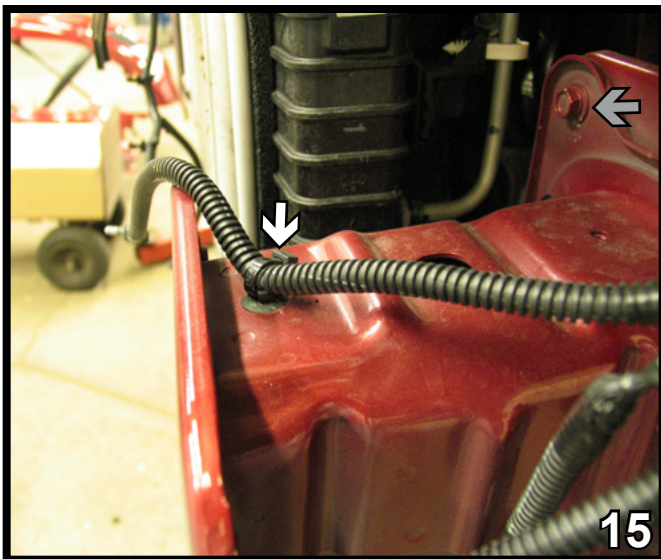
BX3332
2008-10 Saturn Vue and Redline
2012-13 Chevy Captiva Sport (w/Foglights)
Installation Instructions



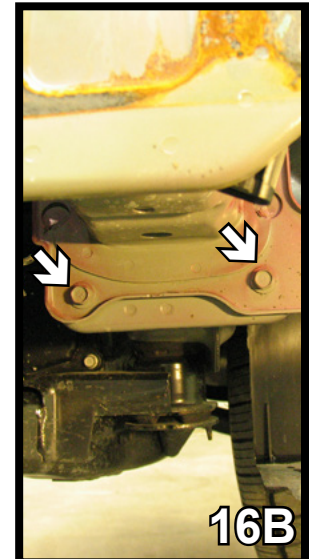
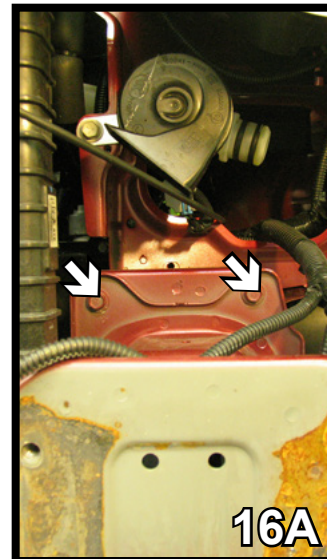
13. In the center of the metal bumper is a temperature sensor that needs to be removed. Depress clips on the front side of bracket and push the sensor back and set up out of the way. This will all be reinstalled in the same place later. Pull H-Frame bumper forward to release.



14. On the passenger side, remove the push pin from the top of the air dam. Do this to both sides.

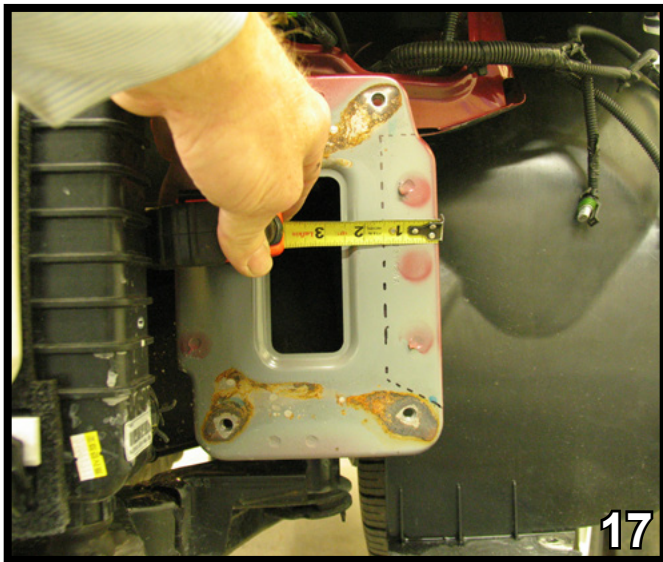


15. On the driver's side, remove the Christmas tree pin holding the wire loom. Pull wire loom out of the way.

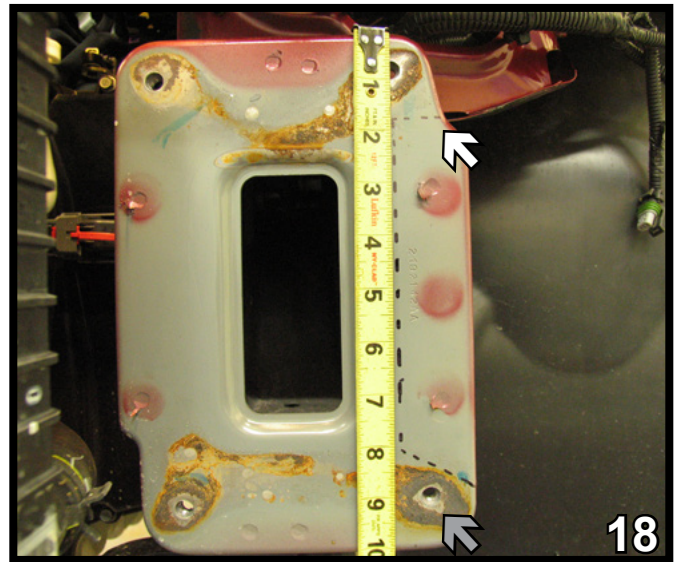


16. To remove frame extension, remove four (4) bolts, two (2) on top (16A), two (2) on bottom (16B), using a 12MM socket. Do this to both sides.

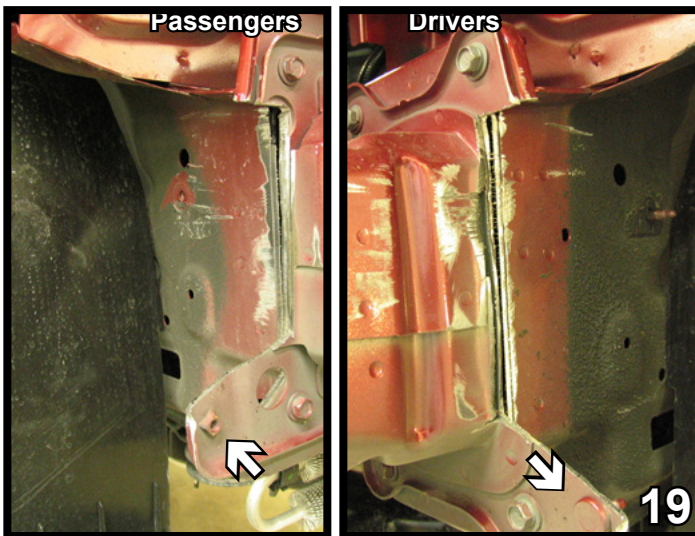
BX3332
2008-10 Saturn Vue and Redline
2012-13 Chevy Captiva Sport (w/Foglights)
Installation Instructions



17. Measure and mark on the side of frame end 1-1/2" wide. Do this to both sides.
**NOTE: 1-1/2" measurement may vary depending on the model of vehicle and is intended to be flush with side of the frame (see photo in Step 19).

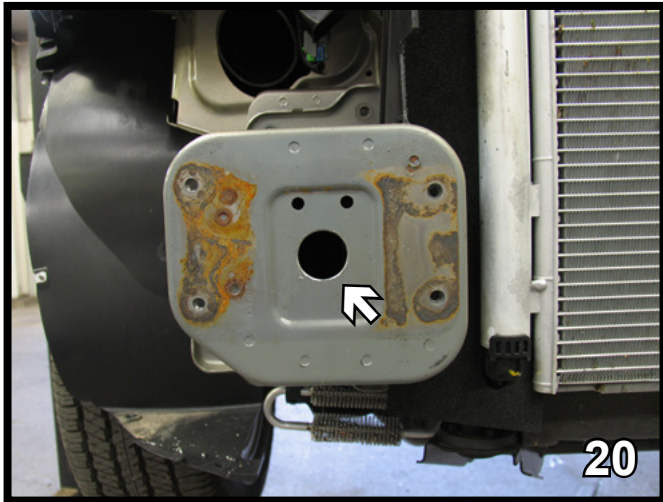


18. Using a reciprocating saw, start a horizontal cut flush with the frame 1-3/4" down from the top and go down to 8" then down at an angle to miss the bolt hole (see gray arrow). Do this to both sides.

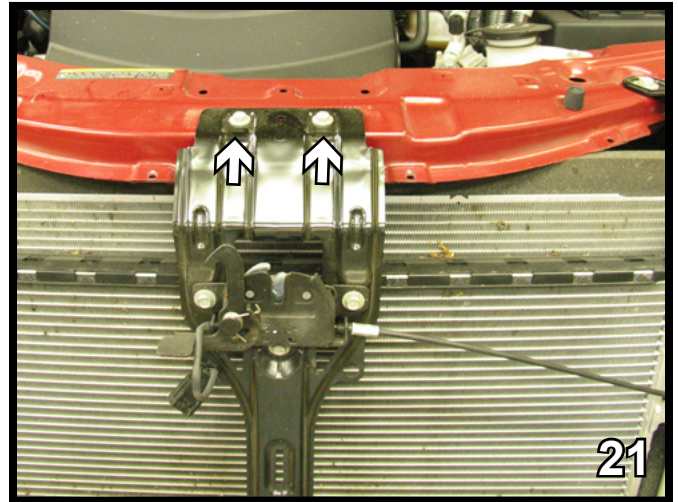


19. Reinstall frame extension, mark and remove same area as step 18 with reciprocating saw. The photos show the extensions after completion. It may be necessary to remove the extensions to cut them. NOTE, leave the weld nut on the passenger's side, and the threaded stud for the water reservoir on the to be reinstalled on the driver's side. Reinstall the passenger's side frame extension. The driver's side will be reinstalled later.

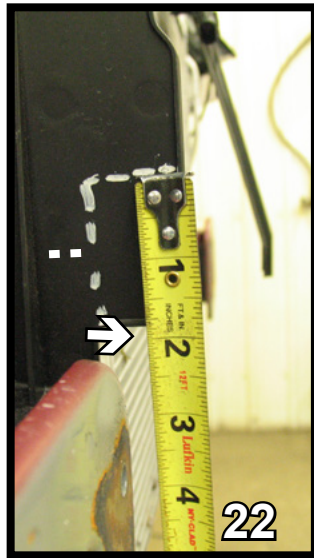
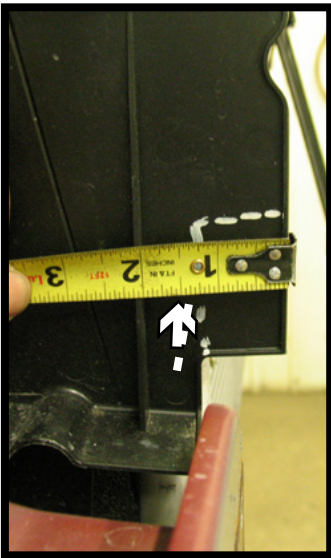
BX3332
2008-10 Saturn Vue and Redline
2012-13 Chevy Captiva Sport (w/Foglights)
Installation Instructions



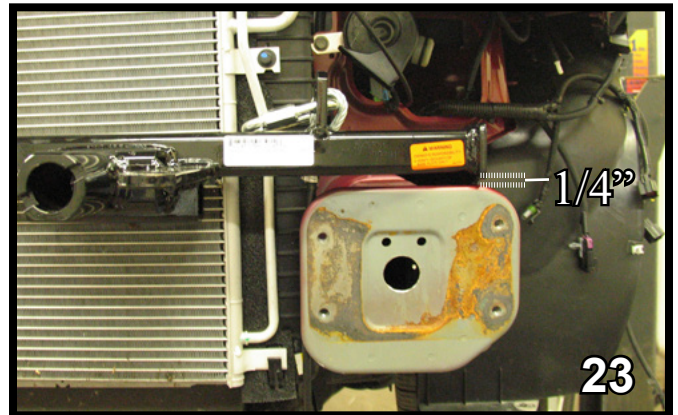
20. With a 1-1/4" hole saw, drill a hole into the center of the indent on the frame extension to set wire nut for baseplate installation. Do this to both sides.



21. Remove two (2) bolts holding hood latch in with a 10MM socket. Set aside for later reinstallation BEFORE bumper bracket.

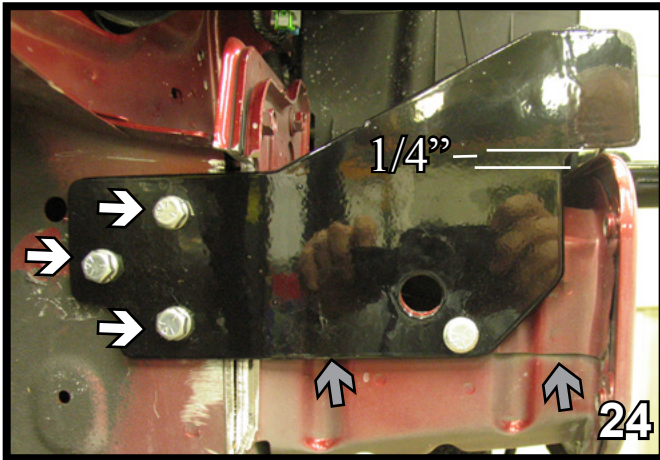


22. With a utility knife, trim the air dam 1-1/2" wide by 2" tall. This is done only on the passengers side.

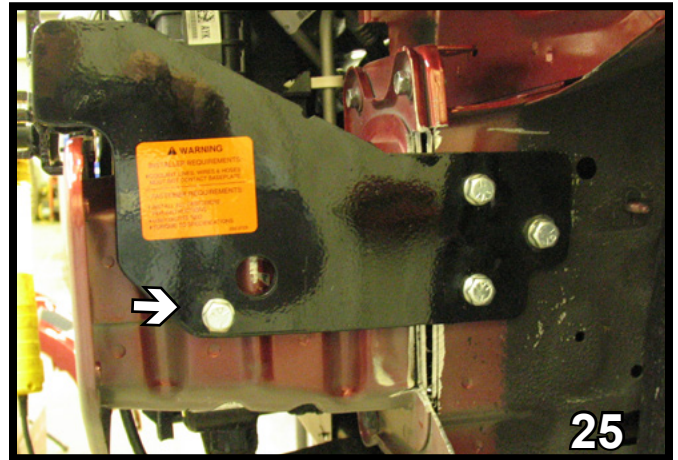


23. Reinstall driver's side frame extension while sliding baseplate onto frame end, then reinstall extension. Clamp and align lower edge of baseplate flush with ridge on side of extension and 1/4" above top ridge of frame extension (see photos in steps 24 and 25 for correct placement). Align large hole on passenger side with existing large hole on frame extension and adjust driver side an equal distance forward. Using the baseplate as a template drill all holes into frame and extension with 13/32" drill bit. Do this to both sides.

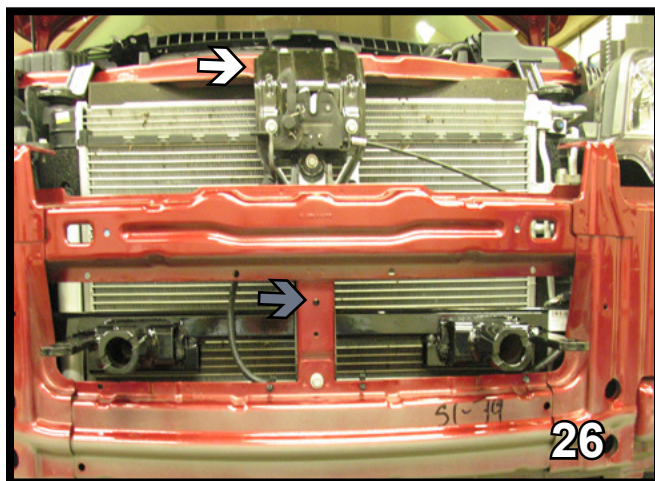
BX3332
2008-10 Saturn Vue and Redline
2012-13 Chevy Captiva Sport (w/Foglights)
Installation Instructions



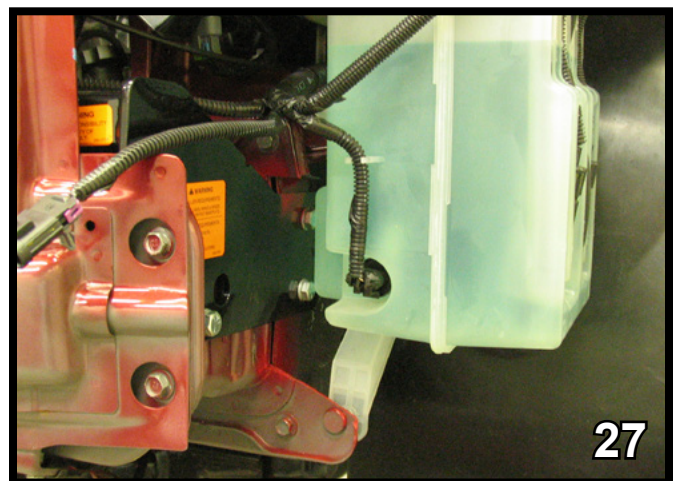
24. Be sure that the baseplate is level with the frame extension ridge before tightening (see gray arrows). Insert nut plates into frame extension end and align with baseplate holes, install all 3/8-16 x 1 1/2" hex bolts with 3/8" lock washers into nut plates and tighten down. Do this to both sides.



25. Place two 5/16" or 3/8" flat washers between the baseplate and extension as needed to fill gap, then insert a 3/8"-16 x 1-1/2" hex bolt and 3/8" lock washer, tighten into nut plate.



26. Reinstall hood latch assembly and metal bumper by using existing holes and bolts. NOTE: If equipped with coolant lines install into the existing hole above where lines were located when removed, using the supplied 1/4"-20 x 3/4" bolt, 1/4" flat washer and 1/4"-20 lock nut (gray arrow). Reconnect the coolant line on the passenger side.

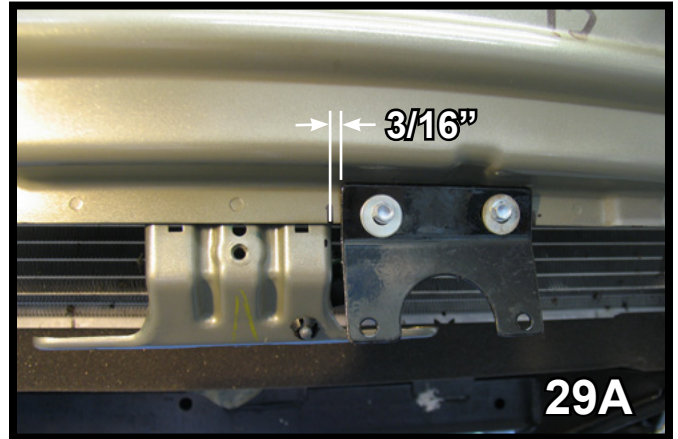


27. Reinstall the washer reservoir with the existing bolts, clip fluid and electrical lines back into place.

BX3332
2008-10 Saturn Vue and Redline
2012-13 Chevy Captiva Sport (w/Foglights)
Installation Instructions



28. Reattach air baffle with existing holes and existing bolts.

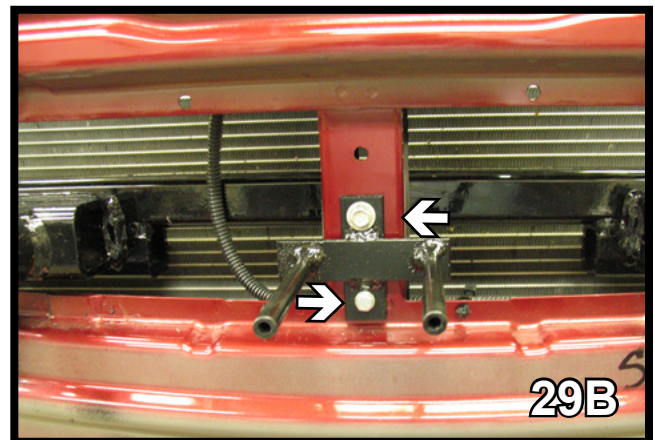


29. VUE / CAPTIVA MODELS

Keeping a 3/16" gap to the right of the center on the lower metal bumper support, place the connector as high as you can on the webbing and install with #10-16 self-drilling screws and 1/4" flat washers.



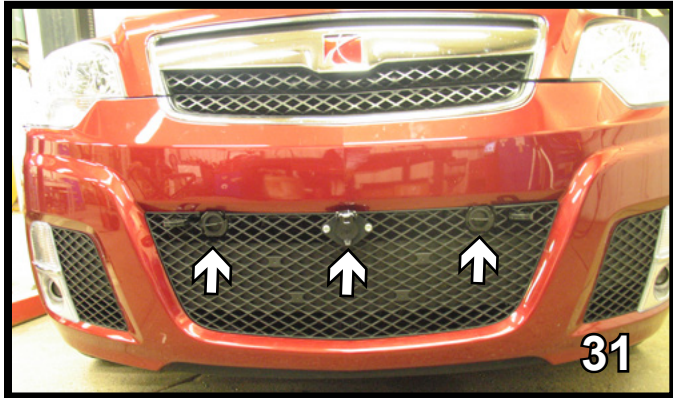
30. Attach the permanent baseplate safety cables to the provided convenience link on the baseplate. The photo above shows the recommended installation of the cables to frame of vehicle. Additional options may interfere with suggested mounting; in this case secure the cables to a solid piece of the frame as described in the instructions included with the permanent baseplate safety cables. Be sure the safety cables do not rub against any hoses or moving parts. Do this to both sides of the vehicle.



29. REDLINE MODEL

Use the existing bolt in the top hole of the connector and install with 6MM x 30MM hex bolt and 6MM lock washers with two (2) 5/16" washers behind to get the bracket flush.

BX3332
2008-10 Saturn Vue and Redline
2012-13 Chevy Captiva Sport (w/Foglights)
Installation Instructions



31. REDLINE MODEL

Hold fascia as close to it's original position as possible, trim grille opening as needed. Reinstall fascia, then install connector plug using appropriate hardware for either a 4-way connector plug or 6-way connector plug.



32. VUE/CAPTIVA MODELS

Hold fascia as close to it's original position as possible, trim grille opening as needed. Reinstall fascia, then install connector plug using appropriate hardware for either a 4-way connector plug or 6-way connector plug.

CUSTOMER SERVICE COMMITMENT

Blue Ox® is committed to providing you with exceptional customer care throughout your lifetime with our products. Our team is here to assist you with any questions you may have regarding the performance of your product. Simply call (402) 385-3051 and you can speak with our customer care team.

Additionally, please visit our website to see which rallies our Destination America team will be attending. For a nominal fee, our service technician will service your towing system to ensure it's in proper working condition. Also, as a commitment to our customers, should you visit our factory, you can stay at our full service Blue Ox® campground at no charge along with enjoying a factory tour.

Again, thank you for being our customer and for the confidence you have shown in the performance of our products. It is because of customers like you we enjoy the success we have today.

© 2012 Blue Ox
One Mill Road, Industrial Park
Pender, Nebraska 68047
Phone: (402) 385-3051
Fax: (402) 385-3360
www.blueox.com