



Strong As An Ox[®]

BedSaver™

Serial No.



Operator and Installation Manual BXR4102 Reese/Drawtite 18K, 20K, 22K

Unless otherwise specified, the bed saver will
NOT work with aftermarket pin boxes. See fit list.

TO BE VALID, THE WARRANTY CARD MUST BE COMPLETED IN ITS ENTIRETY BY AN
AUTHORIZED
DISTRIBUTOR OR DEALER AND SENT TO AUTOMATIC EQUIPMENT MFG. CO., PENDER,
NEBRASKA OR REGISTERED ONLINE AT www.blueox.us.
FAILURE TO DO SO WILL VOID THE WARRANTY.



Strong As An Ox™

Safety Information

SPECIAL DANGER MESSAGE

The act of uncoupling your fifth wheel trailer from your tow vehicle is, singularly, the most dangerous act to be performed when RVing. Many accidents have occurred where broken bones, severed limbs and even death by crushing have resulted from inadvertently dropping the fifth wheel trailer when a person has placed part of his/her body between the tow vehicle and the frame of the fifth wheel trailer. All of these accidents are completely avoidable by following a few simple rules, even without installing BedSaver™ on your hitch.

- Chock your trailer wheels.
- Extend your front jacks until you see no weight is on the hitch.
- NEVER place any part of your body between the trailer frame and tow vehicle or hitch.
- NEVER allow any helper or observer to place any body part between the trailer frame and tow vehicle or hitch.

BedSaver™ prevents damage to your tow vehicle when an inadvertent release happens. BedSaver™ may NOT prevent injury to someone violating the simple rules above.

For everyone's good, and for a safe and happy RVing experience, follow the above rules and NEVER COMPROMISE them.

Safety Information

- 1) Blue Ox™ strongly recommends dealer installation and/or by a certified technician.
- 2) DO NOT ATTEMPT TO INSTALL THIS PRODUCT WITHOUT FIRST READING THESE INSTRUCTIONS.
- 3) WARNING! FAILURE TO INSTALL THIS PRODUCT PROPERLY CAN RESULT IN DAMAGE TO YOUR FIFTH WHEEL TRAILER, TOW VEHICLE, FIFTH WHEEL HITCH AND/OR CAUSE BODILY INJURY.
- 4) This product is not designed or intended for use with fifth wheel trailers having a pin weight of 4000 pounds or more.
- 5) Your BedSaver™ should be inspected for damage after each incident. Note: An incident is defined as any time BedSaver™ catches your trailer.

If the bedsaver is in a incident, it must be replaced. DO NOT use it again! An incident can cause unseen damage and using it again could result in more damage or serious injury. DO NOT use the bedsaver if it is damaged or missing parts.

Special Messages

"NOTE" provides enhancement information pertinent to the specific step of the procedure being undertaken.

"CAUTION" indicates a potential hazard exists that could result in damage to the tow vehicle, fifth wheel trailer or the fifth wheel hitch.

"WARNING" indicates a potential hazard exists that could result in personal injury, or death

Assumptions

It is assumed that you have the Reese or DrawTite 18K, 20K or 22K hitch installed properly. If not, have your hitch installed by a certified technician.

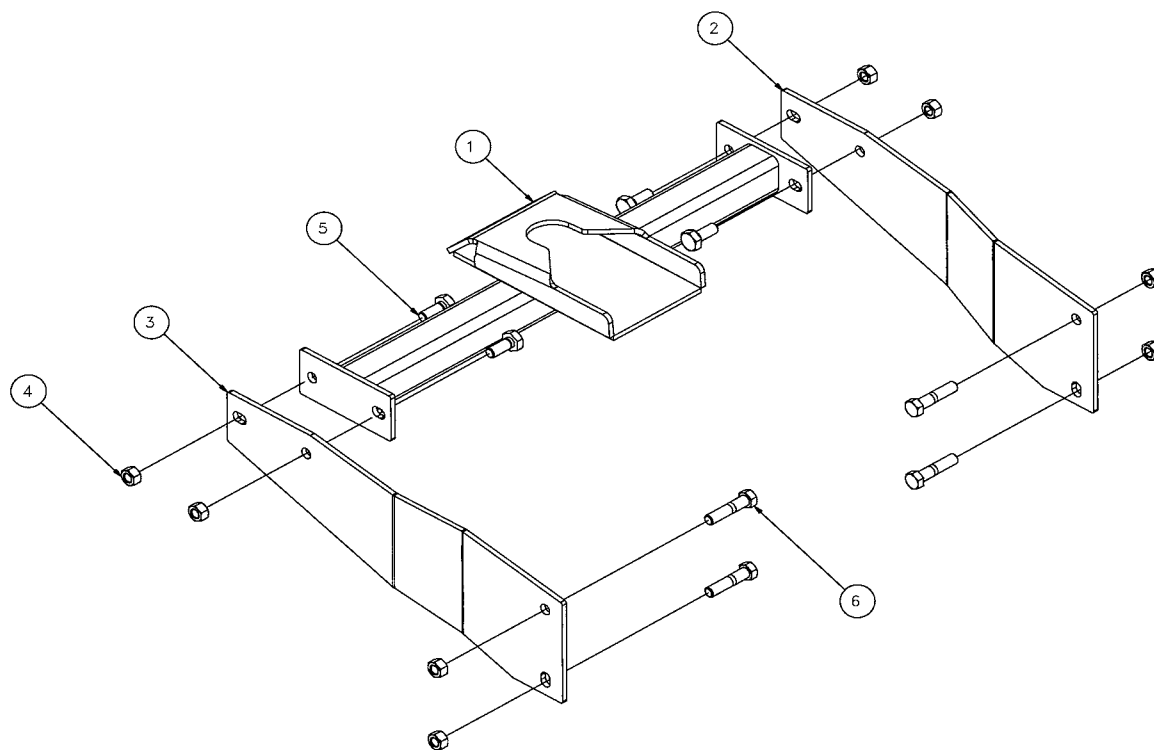


Parts List

Ref. No.	Qty.	Part #	Description
1	1	61-6111	WLDMT, BEDSAVER X-TUBE, 25 1/2
2	1	101-6759	PLATE, BEDSAVER SIDEPLATE, LEFT, BXR4102
3	1	101-6760	PLATE, BEDSAVER SIDEPLATE, RIGHT, BXR4102
4	8	202-0094	1/2-13 HEX NYL. INS. LOCK NUT, ZP
5	4	201-0011	1/2-13 X 1 1/4 HEX BOLT, GRADE 5, ZP
6	4	201-0068	1/2-13 X 1 3/4 HEX BOLT, GRADE 5, ZP

Tools Required

3/4" Socket 3/8" Drive Ratchet
 3/4" Comb. Wrench Torque Wrench



NOTE: The illustration in the preceding instructions shows a Reese Hitch that is not necessarily of the exact model in these instructions. This procedure remains the same for your DrawTite hitch. For this procedure, consider the Reese and DrawTite hitches to be the same. Any differences will be



Installation

Requirements for placement of BedSaver™ Side Plates

The BedSaver™ Side Plates are mounted with the bottom mounting holes aligned with the Hitch Side Frame bottom mounting holes. The BedSaver™ Side Plates are mounted with the beveled corners located on the bottom and toward the rear of the tow vehicle.

Note: You will find a label on each Side Plate. The labels should be placed to the outside of the hitch.

Step 1

At each end of the hitch, remove the hairpins securing the clinch pins (which keep the hitch head captive on the hitch frame). Refer to Figures 1, 2, 3 and 4 below for details.



Figure 1 – Removing Hitch Head Left Hairpin



Figure 2 – Removing Hitch Head Left Pin



Figure 3 – Removing Hitch Head Right Hairpin



Figure 4 – Removing Hitch Head Right Pin

Step 2

Carefully lift the hitch off of the hitch frame and place nearby.

WARNING: The hitch head is very heavy and can cause serious injury if not lifted properly. To avoid personal injury, have a helper assist with this lift, and the subsequent reinstallation.



Strong As An Ox™

Installation Cont.

Hitch Frame Vertical Support Mounting Bolt Replacement

To facilitate mounting of the BedSaver™ Side Plates, it is necessary to replace the vertical support mounting bolts with slightly longer mounting bolts. In performing this operation, you will need to drive out the existing bolts and install new, longer and harder (Grade 8) bolts from the inside of the hitch frame. You will be discarding the original bolts, while retaining the original lockwashers and nuts for reuse with the new bolts.

Step 3

Using a 3/4" wrench, reach inside the hitch frame box and loosen the four vertical support mounting nuts, two on each side. Do not remove the nuts. Unscrew the nuts until they are flush with the end of the bolts. **NOTE: Each bolt will be replaced one at a time to ensure the vertical supports remain in their original positions. These bolts are special with serrated shanks, which hold them captive in the hitch frame. They must be driven out. Continue to Step 4.**

Step 4

Using a ball peen hammer, tap on the end of a protruding bolt with the nut aligned at the end, only one at a time, with increasing force until the bolt pops loose in the hole. Unscrew the nut from the bolt, Page 5 of 7 remove the lock washer. Remove and discard the bolt, nut and lock washer. Refer to **Figure 5** below for details in removing the original bolts.

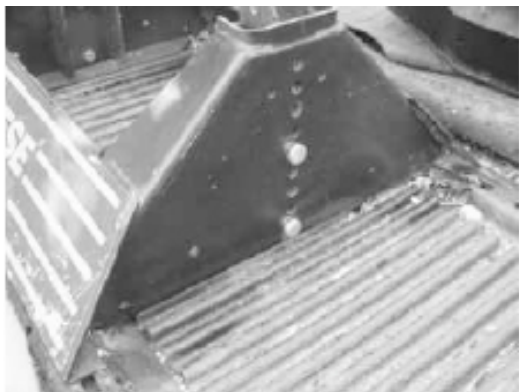


Figure 5 – Removing Original Bolts

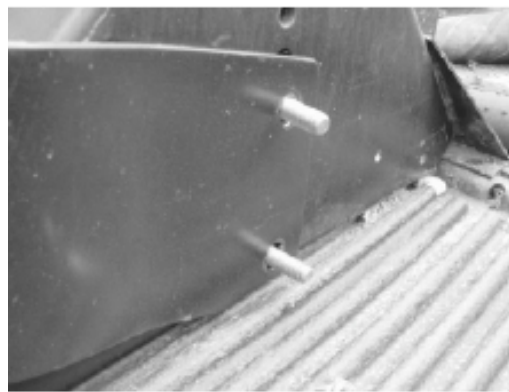


Figure 6 – Installing Replacement Bolts With Side Plate

Step 5

Using a 1/2-13 X 1 3/4" Grade 8 bolt supplied with the kit, insert it from the inside out through the hole just vacated by the bolt removed in Step 4. The shank of the bolt should now be to the outside of the hitch frame. Repeat Step 4 above three more times to replace the remaining three vertical support bolts.

NOTE: The shanks (threaded ends) of all four bolts should now be outside the hitch and ready to receive the BedSaver™ Side Plates. See Figure 6 above for details.

Step 6

Place the Side Plate onto the two protruding bolts installed in Step 5 above and start two Nylok nuts (supplied in the kit) to keep the Side Plate captive while the remaining parts are installed. Do not tighten the nuts.

Step 7

Place the Right Side Plate on the two right hand bolts protruding from the hitch frame and secure loosely with two Nylok nuts supplied in the kit. Do not tighten the nuts.



Strong As An Ox™

Cross tube Installation

Step 8

Refer to **Figure 9**, below for details. Using the remaining four bolts and nuts supplied with the kit, attach the Crosstube to the left and right Side Plates. Insert the bolts with the heads on the outside and finger tighten the nuts.



Figure 7 – Crosstube Attachment, Left

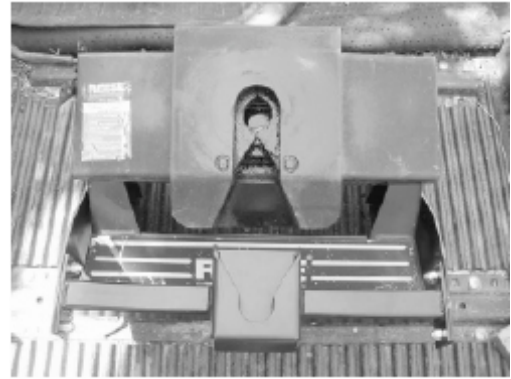


Figure 8 – Complete Installation, Top



Figure 9 – Complete Installation, Rear



Figure 10 – Complete Installation

Step 9

Inspect the Side Plates and Crosstube for proper placement. When satisfied that it appears correct, tighten the four nuts securing the Side Plates to the hitch frame, then tighten the four nuts and bolts attaching the Crosstube to the Side Plates. **Torque all nuts to 65 foot pounds. NOTE: When tightening the Side Plates to the hitch frame sides, it may be necessary to lift the Side Plate for proper alignment and leveling.**

Step 10

Carefully lift the hitch head and place it back into position on top of the vertical supports. Reinsert the clinch pins (see **Figures 3** and **4** above). Reinsert the hairpins to secure the clinch pins (see **Figures 1**).

Step 11

Again inspect the installation and compare against **Figures 8-10**. Your BedSaver™ installation should look very similar to these figures.