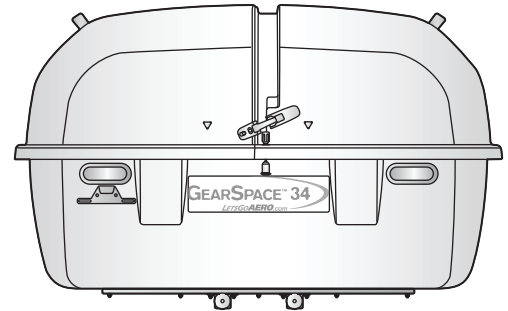


PRODUCT MANUAL

Installation & Safe Use Operation Highlights

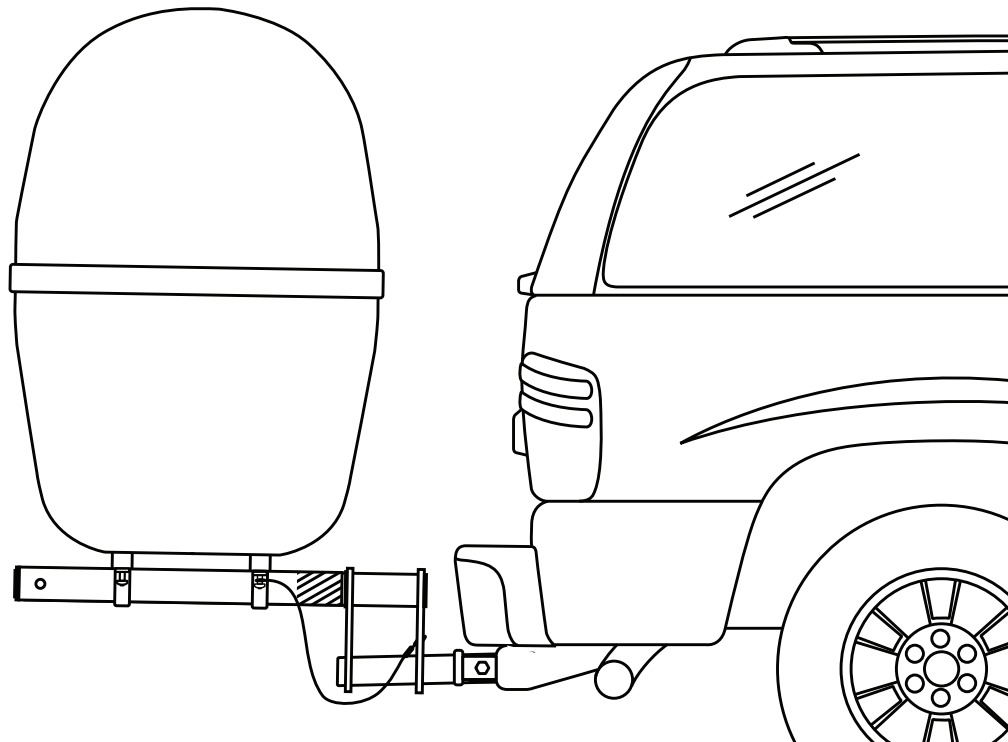
Fits 2" receiver hitches with Class II minimum tow rating.
Weighs 140 lbs empty.
Rated for up to 300 lbs of cargo payload.



The GearSpace cargo carrier ships factory assembled on a pallet via freight truck. The installation process entails final stage assembly and connectivity of a two part, slide out system. Save this manual for reference for operation and safety requirements.

GEARSPACE - ASSEMBLY, INSTALLATION, AND OPERATIONS INSTRUCTIONS:

Description	Page
TwinTube® Spine Assembly/Install	2
Capsule and Frame Assembly/Install	3
Safe Use & Operation	6

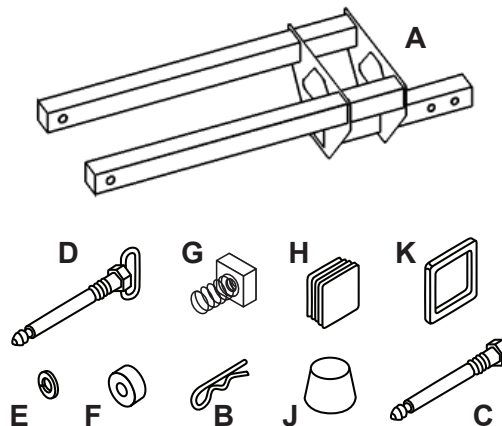
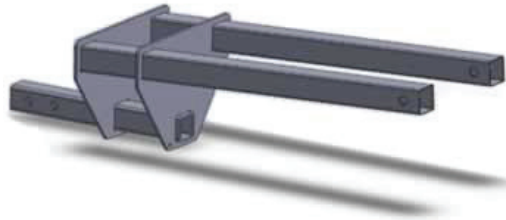


TWINTUBE® SPINE ASSEMBLY AND INSTALLATION



Hitch Up & GO Overview:

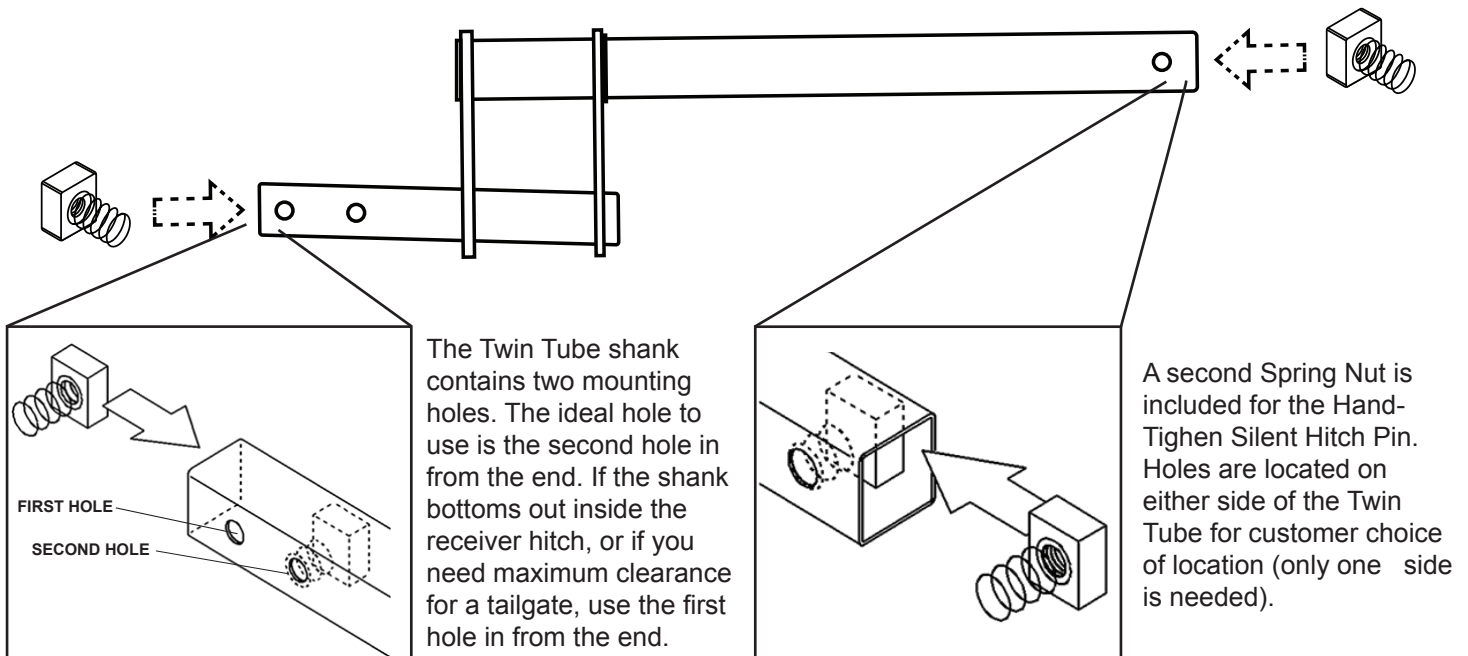
- Install TwinTube Spine on Hitch
- Secure to hitch with Silent Hitch Pin®



Qty.	Description
A 1	TwinTube® Spine
B 2	Retainer clip
C 1	5/8" Silent Hitch Pin®
D 1	5/8" Silent Hitch Pin® (Hand-Tighten)
E 1	5/8" Lock Washer
F 1	5/8" Plastic Bushing
G 2	5/8" Spring Nut
H 2	2" End Cap
	2 1/4" End Cap
J 1	Wax
K 2	Rubber Bumper End Cap & Reflectors

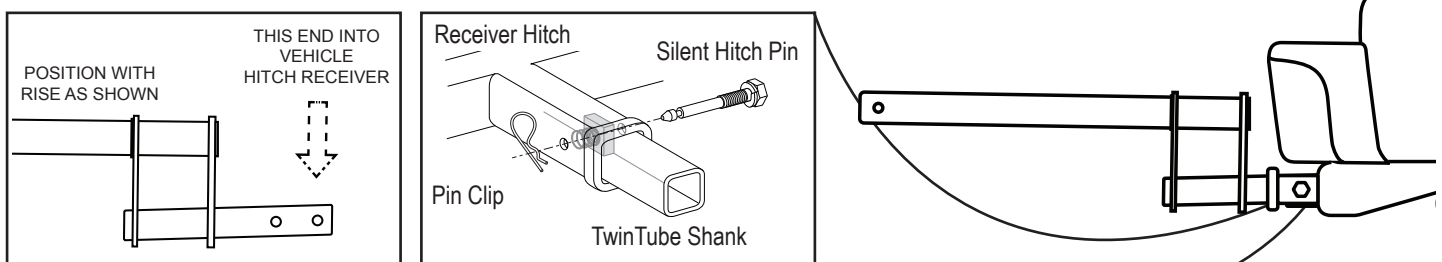
Note: Some of the following steps may have been done in-factory, prior to shipment.

STEP 1 Install two spring nuts [G] as shown.



STEP 2 REQUIRED TOOL: 7/8" WRENCH

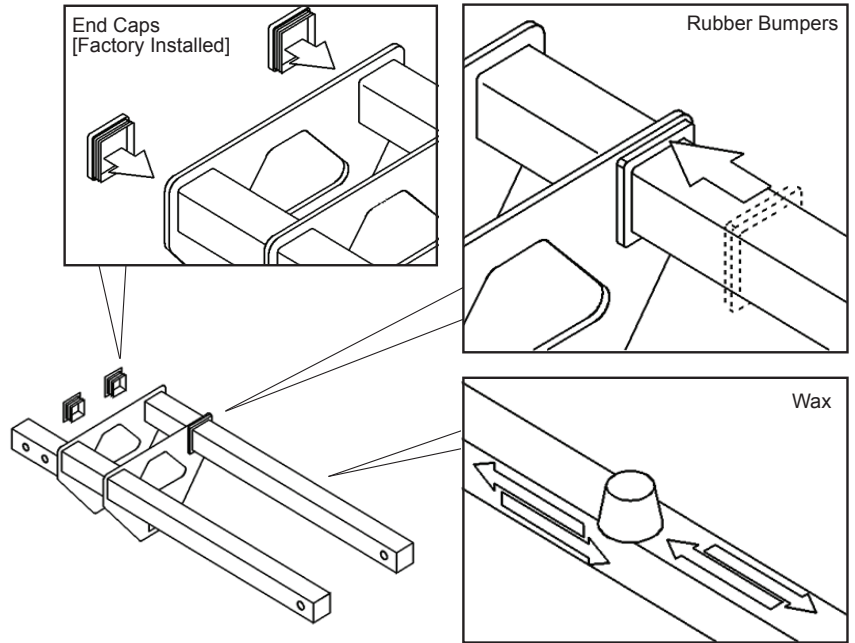
Slide the TwinTube [A] shank into the receiver hitch aligning the mounting hole with the hole in the receiver hitch. Attach with Silent Hitch Pin and washer [C,E]. **Tighten (30 ft.lbs. torque). Attach pin clip [B].**



STEP 3 RECOMMENDED TOOL: RUBBER MALLET

By rubbing, use the wax block [J] to apply wax to all four sides of both tubes. Install two rubber bumpers [K] (one onto each fixed tube) and two end caps [H]. The remaining hand-tighten Silent Hitch Pin, bushing and retainer clip [D,F,G] will be used, along with a safety cable, to secure the Let's Go Aero cargo carrier to the TwinTube in Step 4.

If you are missing any items or have assembly and installation questions, please contact Let's Go Aero technical support at 1-877-GO-4-AERO or 719-630-3800

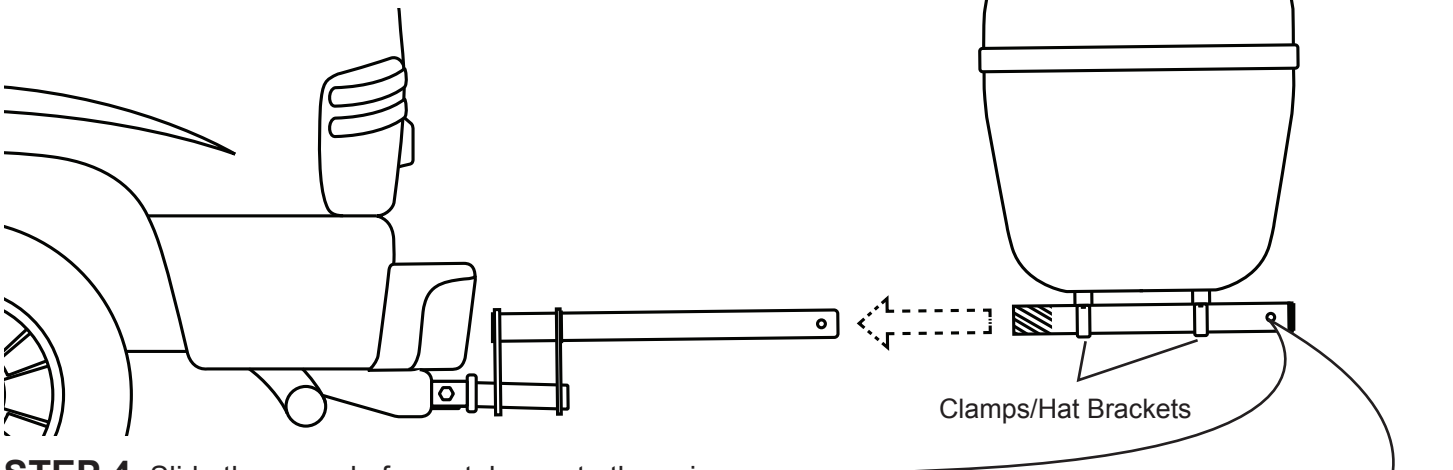


CAPSULE INSTALLATION



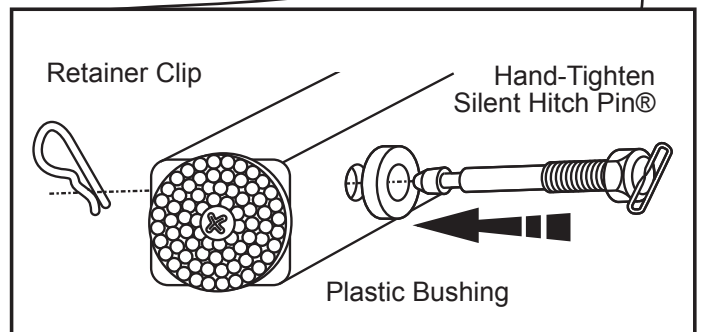
Hitch Up & GO Overview:

- Slide Capsule Frame Tubes onto Spine
- Attach Safety Cable
- Secure with Silent Hitch Pin®

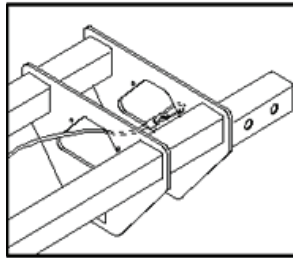
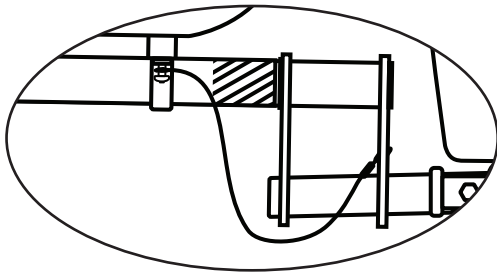


STEP 4 Slide the capsule frame tubes onto the spine. Insert Silent Hitch Pin with handle **through the tube where spring nut has been inserted from Step 1**. Tighten firmly and apply pin clip. Install 2 1/4" end caps over both ends of tubes.

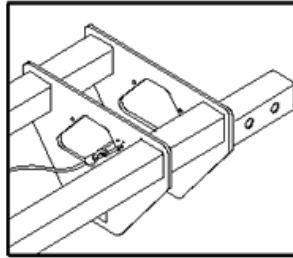
TIP: Loosen bolts on Clamps located on underside of carrier for precision fit slide alignment onto spine; re-tighten Clamps after Carrier is in place on spine.



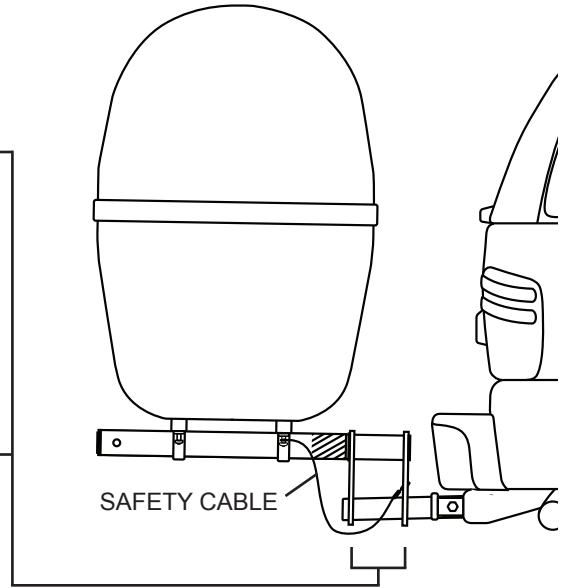
STEP 5 The safety cable must be attached to the spine in one of two positions. POSITION ONE is the recommended position. POSITION TWO will allow the capsule to slide out an extra five inches if necessary for rear hatch, tailgate or door clearance.



POSITION ONE



POSITION TWO

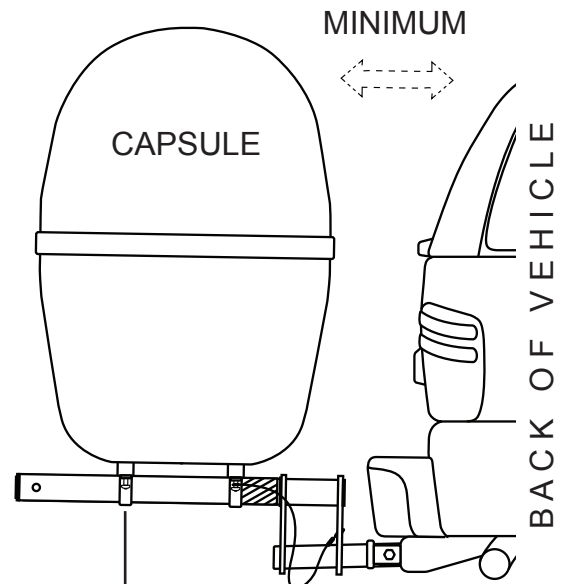
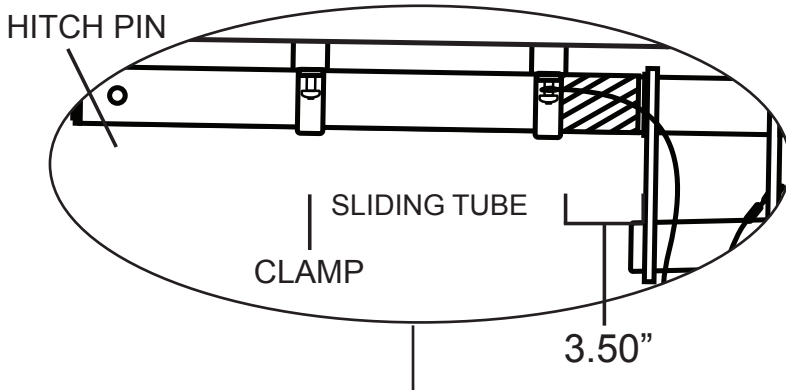


 NO USE AREA - 3.5" RANGE

▲ WARNING
WHEN USING POSITION TWO, DO NOT ALLOW CLAMPS TO OVERLAP THE 3.5" WARNING LABEL. DOING SO WILL PERMIT OVER-EXTENSION OF THE SAFETY CABLE ALLOWING THE CAPSULE TO FALL OFF AND CAUSE DAMAGE OR PERSONAL INJURY

SAFE USE ADJUSTABILITY - Minimum Clearance REQUIRED TOOL: 1/2" WRENCH

This position will locate the capsule as close as possible to the back of the vehicle.



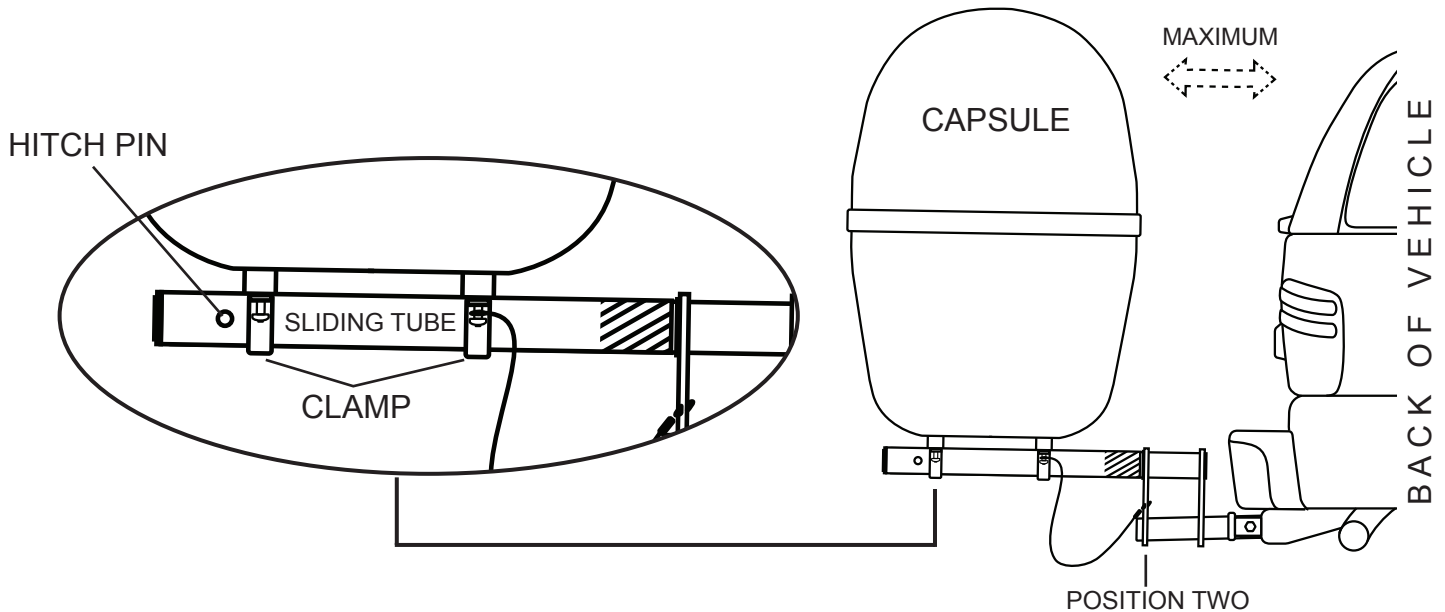
Cable in POSITION ONE. Carrier in Pin Hole closest to Carrier.

SAFE USE ADJUSTABILITY - Maximum Clearance

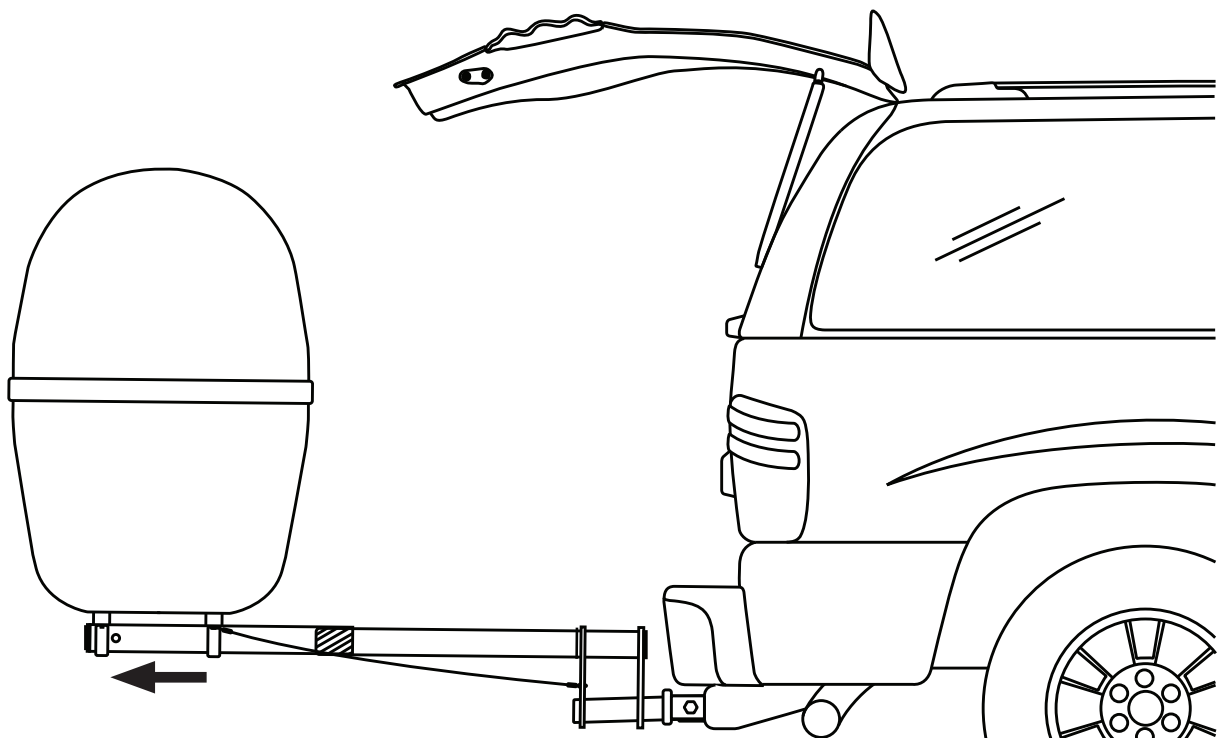
REQUIRED TOOL: 1/2" WRENCH

You may adjust the position of the capsule by loosening the four clamps. Tighten each clamp securely after you have made any adjustment. Clamps can be moved along the slide tubes for maximum clearance between the back of the vehicle and the capsule. Be sure clamps are fully tightened before transit.

For most door clearance needs, use the second shank hole position in the hitch and place the safety cable in position two. The capsule is factory set on slide tubes shown. This renders approximately 28 inches of slide clearance from hitch pin hole to capsule, providing sufficient clearance for most Sprinter RV, hatches and tailgate doors.



For maximum clearance, the first shank hole position may be used. The Clamps may be set rearward near the end of the slide tubes as well. This will render up to 31in of total clearance. Be sure to allow room for the hand-tighten Silent Hitch Pin to operate as required before re-tightening Clamps.



SAFE USE OPERATION

Be sure to follow these guidelines to prevent possible hazards from misuse.



Vehicle and Hitch Receiver Compliance

This GearSpace Cargo Carrier fits 2" size hitch receivers and is rated for a Class II tow capability or higher. Before using this product, consult your vehicle and hitch receiver owner manual(s) for details on your tow and tongue weight parameters. Be sure that they are compatible with GearSpace's weight specifications.

Tongue Weight Compliance

The GearSpace and its cargo create a combined weight that creates direct downward pressure on the hitch receiver's tongue. This downward pressure is the tongue weight. Tongue weight is one of the two critical weight rating factors of your tow rating's classification. **Never exceed your vehicle and hitch receiver's tongue weight specification.**

GearSpace Weight and Load Parameters

The GearSpace weighs 140 lbs unloaded. To determine your available load weight in accordance with your vehicle and hitch receiver's tongue weight rating, subtract GearSpace 34's 140 lbs from your identified tongue weight rating. The difference represents your vehicle and hitch receiver's available load weight.

The GearSpace® is rated for up to 300 lbs of cargo weight carrying capacity for a combined weight of 440 lbs when fully weight loaded.

Sliding Out GearSpace Cargo Carrier & Clearance Adjustability

To telescope the GearSpace remove the Hand Tighten Silent Hitch Pin® from the Telescope Safety pin hole. Verify that the Safety Cable is secured and then slide the frame to the rear. For added clearance, be sure to adhere to NO USE AREA distance of 3.5 inches rearward from Spine's vertical plate along the frame tubes.

Lighting

Check running lights, brake lights, and turn signals before operation. Check the wire harness for good connections and for possible fraying or wearing of insulation if a light signal is not functioning. Check lights before each use.

Locking Up GearSpace

A stainless steel locking pin is included for locking down the GearSpace. The locking pin hole is located on the rear side of the carrier for easy accessibility. A second pin hole is tapped on the front side of the carrier (facing the vehicle's rear) for use with a secondary lock, which is optional.

TECHNICAL SUPPORT

For assistance with this product and for replacement parts, contact Let's Go Aero at 877-464-2376 or email Support@LetsGoAero.com.

WARRANTY & REGISTRATION

We warrant this product to the first consumer to be free from defect in material and workmanship for one year (Please retain your sales slip for your records). Any product or part thereof found to be defective within that period will be replaced without charge provided that: (1) the product was not misused; (2) no alterations or modifications were made; (3) its failure resulted from a defect in material or workmanship and not from normal wear expected in the use of the product; (4) the product or part is delivered, freight prepaid, to Let's Go Aero. Please contact Let's Go Aero, toll free, at 877-464-2376 to get a return authorization number prior to return. Manufacturers only obligation shall be to replace such products or parts proved to be defective.

To register your product, visit the Let's Go Aero website at www.LetsGoAero.com