

## Limited Lifetime Warranty

Phoenix Products, Inc. warrants its faucets against defects in material or workmanship, ordinary wear and tear excluded. Special finishes other than chrome are warranted to for (1) year. Should any faucet, part or parts thereof prove defective, contact us for assistance. Repair or replacement will be made without charge upon return of the defective material.

**Liability for consequential damages under any and all warranties are excluded to the extent such exclusion is permitted by law.** Some states do not allow exclusion or limitation and exclusion may not apply to you. This warranty gives you specific legal rights, and you may also have other rights which vary from state to state.



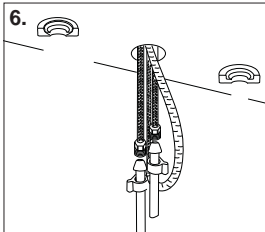
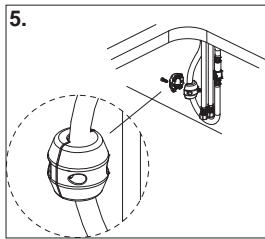
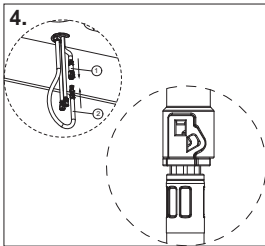
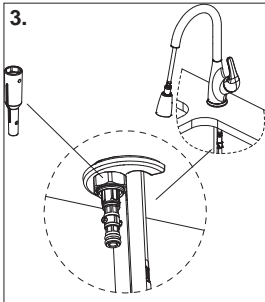
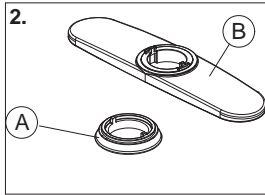
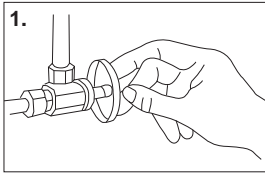
*Making Water Work Beautifully*



Pull Down Kitchen Faucets

Phoenix Products, Inc.  
583 Miller Rd.  
Avon Lake, OH 44012  
1.440.933.8100 Phone  
1.800.222.6041 Toll free  
1.440.933.6252 Fax  
www.phoenixfaucets.com

I-HBPULLDWN r12-13



## INSTALLATION:

### 1. SHUT OFF SUPPLY

Shut off hot and cold water supply lines. Clear Sink ledge of all debris. **NOTE:** This faucet must be winterized annually to prevent the water lines and pullout spout from freezing, otherwise damage may occur to internal components.

### 2. PREPARE FOR INSTALLATION

Slide 1 hole (A) or 3 hole (B) mount flange onto threaded underbody. Plumber's putty is not required.

### 3. INSTALL FAUCET

Install the faucet onto your sink by placing the flexible water supply lines and pull down hose through the center hole. Position faucet on sink making sure the body and handle are centered. Slide rubber washer then brass washer onto threaded underbody. Thread mounting nut onto underbody using the tool provided.

### 4. POSITION SPOUT

Insert pull down spout into faucet body after mounting faucet onto sink. Drop the quick connect end of the spray hose down through the holder and the center faucet mounting hole.

### 5. ATTACH HOSE AND WEIGHTS

Connect the pull down hose to the short hose on the faucet body by lining up the nibs with the cut outs on the locking mechanism. Push firmly to ensure a locked connection. Make sure it's locked by gently pulling on the hose to make sure it's secure. Assemble the lead weights to hose, just above the floor line, so the hose automatically retracts.

### 6. CONNECT SUPPLY LINES

Connect existing water supply lines to the faucet supply lines. Turn on water supply and check for leaks. Tighten nuts as necessary. Do not over tighten.

## Operating Instructions - Faucet

Pulling outward on the lever handle causes water to flow out the aerator. Pushing toward the back of the faucet dispenses hot water; pulling toward the front dispenses cold water. Handle positions between full hot and full cold produce varying degrees of warm water. The degree of handle opening determines the volume of water flow. Pushing the round button on the spout head stops the water flow. Returning the handle to the center and vertical position stops the water flow.

The aerated white stream is the default flow. To use the vegetable spray pattern, press the back of the rectangular button on the spout head. To return to the aerated flow, push the front of the rectangular button on the spout head..

## Operating Instructions - Pull down

The spout can be rotated from full left to full right on the sink. To use the spout as a hand held sprayer, pull the spout head down from the spout to move it freely above the sink being careful not to splash water. Return the spout to the receptor when finished.

## Cleaning Tips

The finish on your Phoenix faucet is designed to retain its beautiful sheen for years. To maintain the original look of the finish, care and caution should be used. We recommend the use of mild soap and water to clean the faucet. **THE USE OF ABRASIVE CLEANERS MAY SCRATCH THE FINISH.**

## Low Flow

After extended use, the water flow from your faucet may appear to lessen. This may be caused by a clogged aerator or check valve. Cleaning these areas often fixes a low flow. Your faucet is equipped with 2 check valves. They are installed to prevent back flow of contaminated water into the water supply lines. The check valves are located in the end of the spray head and the quick connect end of the pull down hose under the sink. The valve under the sink cannot be removed.

## Cleaning the Check Valve

To remove the check valve at the end of the spray head, unscrew the spray head from the hose and check inside the end. Remove the check valve retainer with a small pick. Clear any debris using a small blade screw driver.

## Helpful Hints

Be especially careful when screwing threaded connections together. Do not tighten any connection if the parts are not threading evenly. Unscrew the parts and start over. Unscrew the nut until a click is heard. Then screw the nut on clockwise.

## Cautions:

All supply connections should be hand tightened with an additional 1/4 turn by wrench.

No sealant of any kind should be used between the tailpiece nut and the faucet shank.

This faucet must be winterized annually to prevent the water lines and pullout spout from freezing, otherwise damage may occur to internal components.