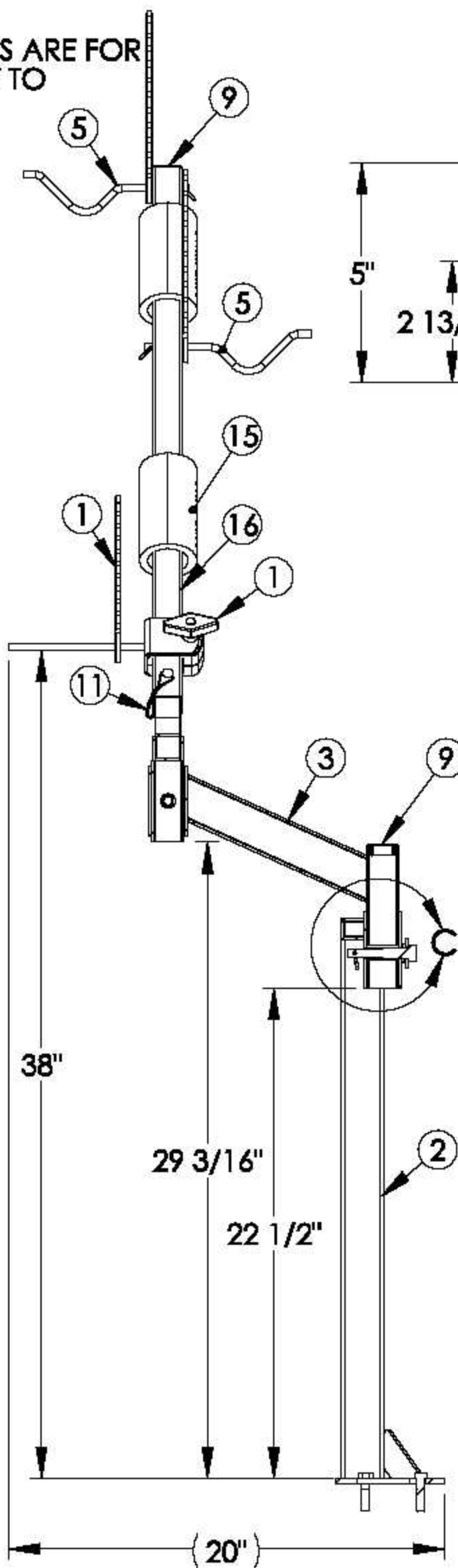
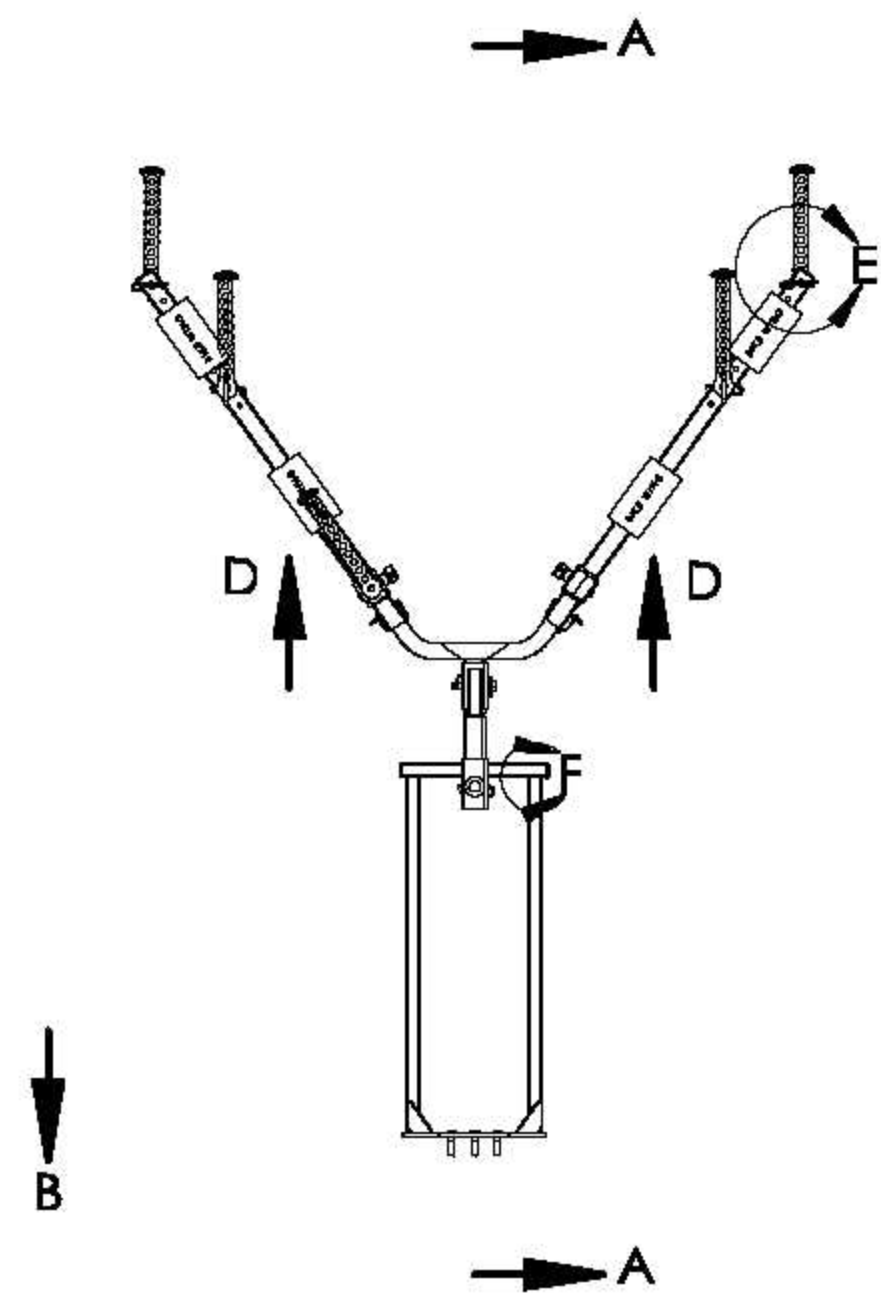
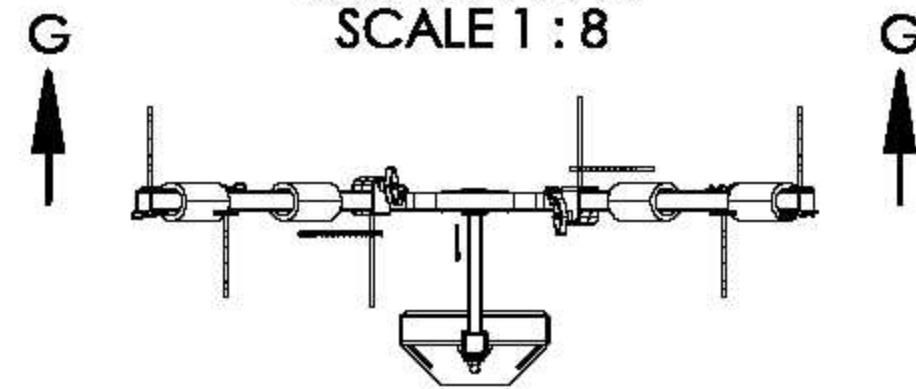
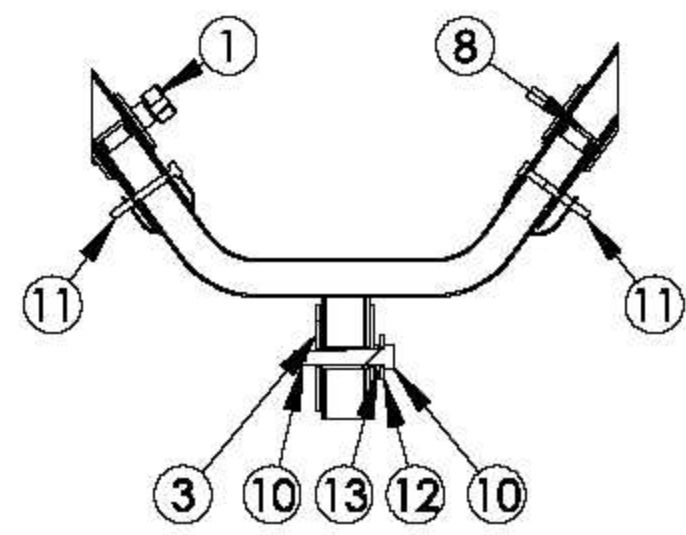
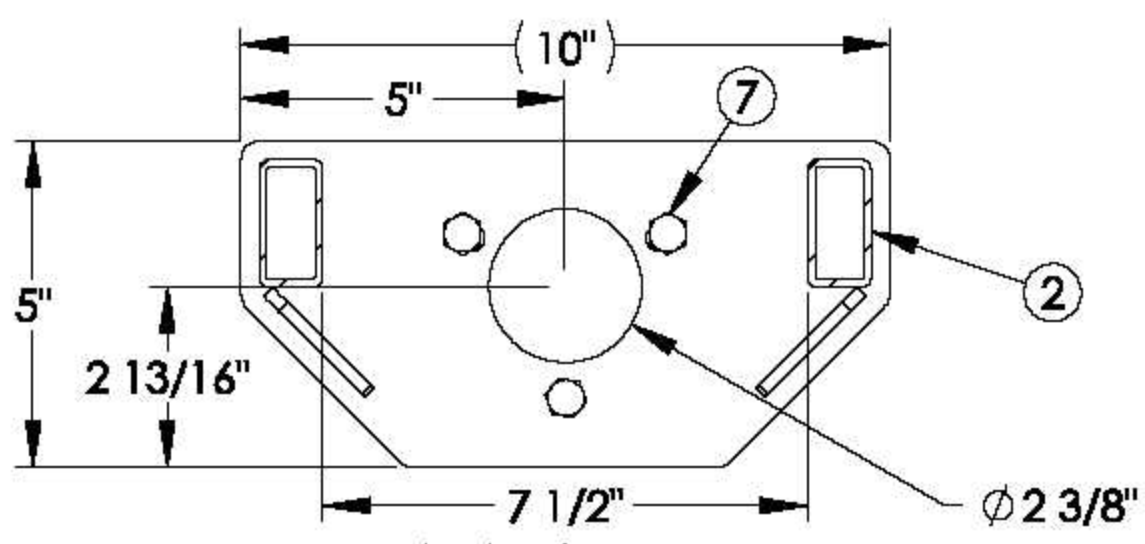


NOTES:

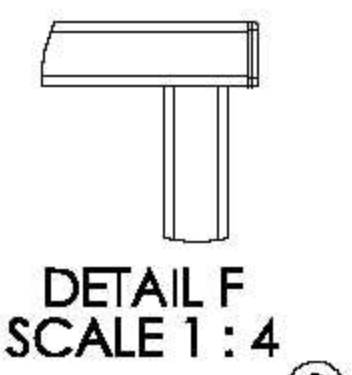
1. FLAT PATTERN AND BEND LINE DIMENSIONS ARE FOR REF. ONLY. SHOP TO VERIFY FORMED PART TO FORMED PRINT.



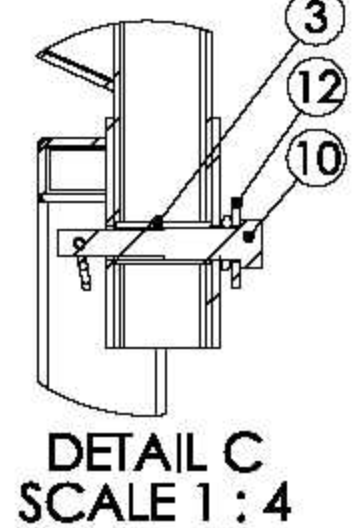
SECTION A-A  
SCALE 1 : 8



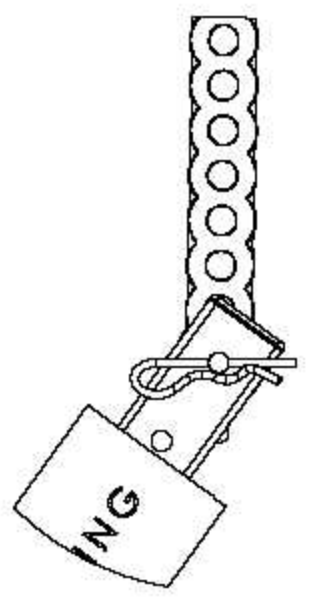
SECTION B-B  
SCALE 1 : 4



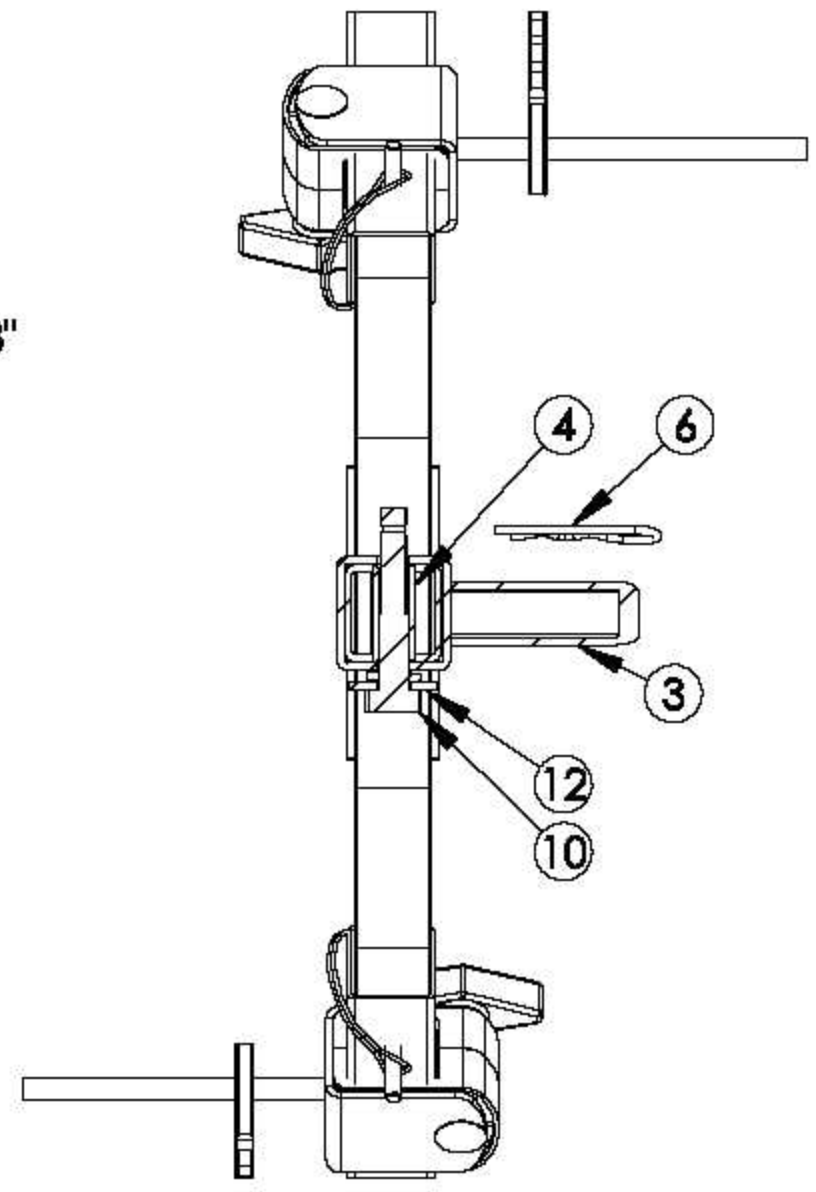
DETAIL F  
SCALE 1 : 4



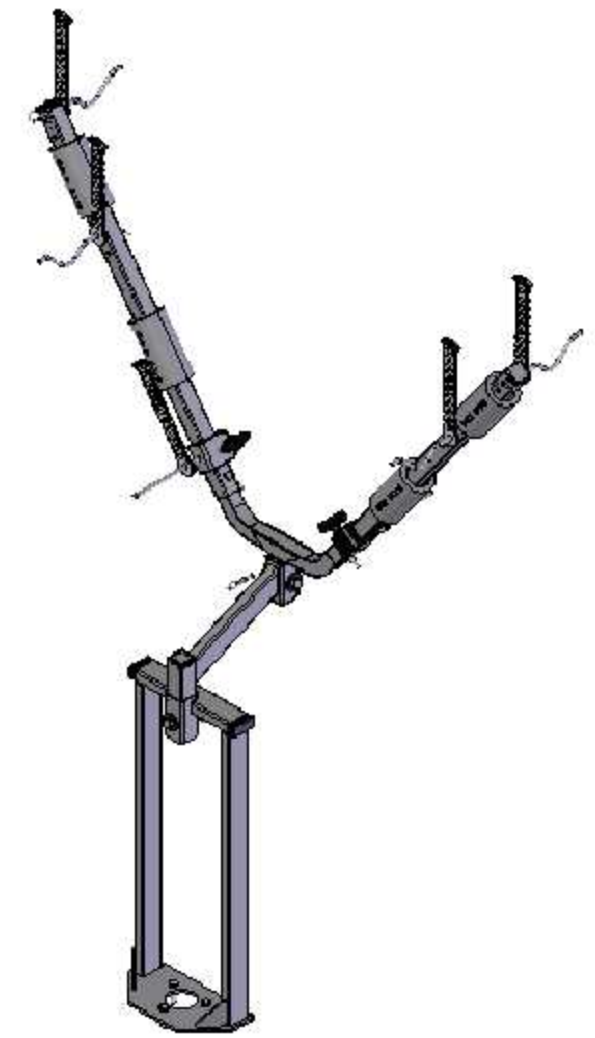
DETAIL C  
SCALE 1 : 4



DETAIL E  
SCALE 1 : 4



SECTION D-D  
SCALE 1 : 4



REVISION HISTORY					
REV	DATE	DESCRIPTION	CA	DWR	APVD
A	3/7/2016	RELEASED TO PRODUCTION	CA-0010732	BRJ	CK
B	5/4/2016	DIM 19.04 WAS 21.99 AND DIM 60.00 WAS 60.45 ADDED NOTE 1	CA-0019787	BRJ	CK
C	11/28/2016	CONVERTED FROM PART TO ASSEMBLY	CA-0057980	MTH	JMM

ITEM	PART NO.	CONFIG	DESCRIPTION	NAME	GA	QTY.
1	433819	Default	RUBBER STRAP SUB ASSY, JACK IT	SA		2
2	433824	Default	BOTTOM BRACKET, JACK IT	SA		1
3	433825	Default	CANTILEVER SUPPORT ASSEMBLY, JACK IT	SA		1
4	433827	Default	ROTATING TUBE ASSEMBLY, JACK IT	SA		1
5	433828	Default	V-RACK RUBBER STRAP SUB ASSEMBLY, JACK IT	SA		4
6	257163	Default	COTTER PIN - 1/8" X 2 9/16"			2
7	249358	Default	BOLT - 3/8 - 16 X 1-1/2; HEX CAP SCREW GR5 ZINC	FASTEN		3
8	433830	Default	1.181 X 1.181 X .591 TUBE CAP, JACK IT	FASTEN		2
9	433831	Default	1.378 X 1.378 X .512 TUBE CAP, JACK IT	FASTEN		3
10	433832	Default	BOLT - 1/2-13 X 2 3/4 CB GR5 ZN PTNP ST	FASTEN		2
11	433835	Default	PIN - 1/4 X 2 3/8 USEABLE, SNAP RETAINER	FASTEN		2
12	118138	Default	WASHER - 1/2; USS FLAT ZINC	FASTENER		2
13	162838	Default	WASHER - 1/2" X 0.86" X 0.125", LOCK, ZINC	FASTENER		2
14	203122	Default	TUBE CAP: 1 X 2, BLACK	PURCH		2
15	433834	Default	FOAM SLEEVE, 5.118 X 2.625, JACK IT	SMALL PART		4
16	433813	Default	TUBE 30" X 1 3/8" X 1 3/8"	TUBE		16

JACK IT

REFERENCE NUMBER:	
MATERIAL TYPE:	
SURFACE QUALITY:	
DECIMAL:	
FINISH GOOD WEIGHT:	29.413
BLANK WEIGHT:	
BLANK SIZE:	

UNLESS OTHERWISE SPECIFIED 1. ALL DIMENSIONS ARE IN INCHES 2. BREAK SHARP EDGES & DEBURR 3. MATERIAL & FINISH TO BE AS NOTED OR SUBSTITUTED WITH AN APPROVED AND TESTED EQUIVALENT		TOLERANCES (EXCEPT AS NOTED)		THE INFORMATION CONTAINED IN THIS DRAWING IS THE SOLE PROPERTY OF LIPPERT COMPONENTS, INC. ANY REPRODUCTION IN PART OR AS A WHOLE WITHOUT THE WRITTEN PERMISSION OF LIPPERT COMPONENTS, INC. IS PROHIBITED.		
FILLET R.015	FINISH ✓	DECIMAL X ±1 XX ±03 XXX ±015		DWG. NO. <b>406874</b>	DATE 11/28/2016	REV. <b>C</b>
THIRD ANGLE PROJECTION		FRACTIONAL ±1/16		SIZE <b>B</b>	SCALE 1:18	
		ANGULAR ±1°		DRAWN BY BJR	CHECKED BY BJR	APPROVED BY

DRAWN BY BJR		CHECKED BY BJR		APPROVED BY	
SHEET 1		OF 1			