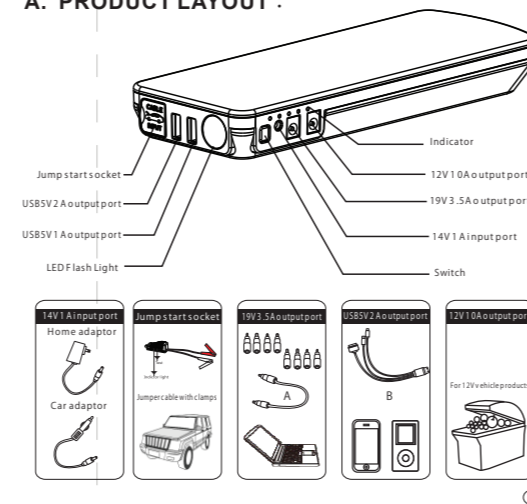


mpower **JUMP PLUS**
USER MANUAL

Thank you for choosing the mPower Jump Plus! Always follow basic safety precautions when using electrical appliances. Read all instructions carefully, Please keep this instruction manual for easy reference

A. PRODUCT LAYOUT :



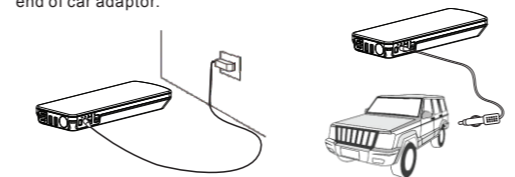
B. OPERATION GUIDANCE

Indicator
Press the switch to check the storage level of mPower Jump Plus

Indicator	Unit	5 Flashing	1 solid	2 solid	3 solid	4 solid	5 solid
Storage level	0%	10%	20%	40%	60%	80%	100%

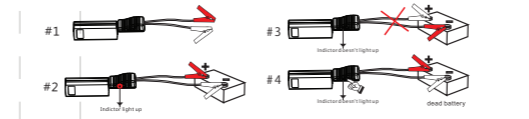
All indicator lights go off when the charging is paused or completed.

- mPower Jump Plus Charging Instruction :**
1. Plug the home adaptor into the wall outlet.
 2. Connect 14V 1A input port of mPower Jump Plus to the other end of home adaptor.
- Or
1. Plug the car adaptor into the socket of cigarette lighter.
 2. Connect 14V 1A input port of mPower Jump Plus to the other end of car adaptor.

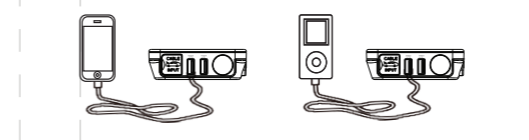


- Jump start 12V vehicle Instruction:**
1. Make sure that the number of indicators is not less than 3.
 2. Plug the cord or jumper cable into the jump start socket. (See #1)
 3. Connect the RED clamp to the vehicle's battery positive (+) terminal and connect the BLACK clamp to the vehicle's battery negative (-) terminal. (See #2)
 4. Check the Jumper Cable Indicator:
 - a. If the indicator light is on (See #2), go to Step 5.
 - b. If the indicator doesn't light up, check the clamp connection to the terminals. (See #3) If properly connected and indicator light is still not on (See #4), press the "TEST" switch and go on to Step 5.

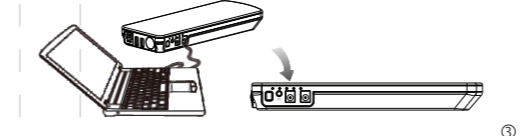
- 5 Start the vehicle.
- 6 When the vehicle is started, remove the Jump Starter and the Jump Clamps from the vehicle battery. Leave the vehicle's engine running.



- Charging Cell Phone or Tablet Instruction:**
1. Plug the switch cable B to USB 5V 2A output port
 2. Select appropriate connector and connect it to your mobile phones or tablet.
 3. Press the switch button to charge.
 4. If doesn't work, please try another USB Output port.



- Only for charging/power supply to 19V Notebook**
1. Plug the switch cable A to USB 19V 3.5A output port
 2. Select appropriate connector for your Notebook and connect it to the switch cable A and your Notebook.
 3. Press the switch button to charge/power supply.



- For power supply to 12V vehicle products or 12V electronics**
1. Plug the optional switch cable to 12V 10A output port.
 2. Connect the optional switch cable and 12V vehicle product or 12V electronics.
 3. Press the switch button to power supply.

- LED flash light**
Press the switch 3 seconds to start the LED flash light
The 4 modes of LED light appear in order (normal, strobe, SOS, off) if you press slightly.

C. PARTS LIST :

#	Parts Name	Quantity	#	Parts Name	Quantity
1	Host	1	5	Home adaptor	1
2	Switch cable A	1	6	Car adaptor	1
3	Switch cable B	1	7	Jumper cable with clamp	1
4	Notebook connector	8	8	User Manual	1

D. TECHNICAL SPECIFICATIONS :

Size: 9.05" x 3.42" x 1.06"
Weight: 1.35 lb
Battery Capacity: 66.6Wh
Output: 5V/1A, 5V/2A, 12V/10A, 19V/3.5A
Input: 14V/1A
Full charging time: 8 hours
Starting current: 300A
Peak current: 600A
Operating temperature: -20°C/60°F-4F-140°F

- E. FAQ :**
- Q. How to turn off this appliance?
A. This appliance will power off automatically when there is no load.
- Q. How long will it take to fully charge the mPower Jump Plus?
A. Approx. 8 hours through the 14V/1A input.

- Q. How many times can this appliance charge my cell phone?
A. It depends on the battery capacity of your cell phone. (Ex: iPhone4 will fully charge 14 times)
- Q. How long will this appliance take to fully charge my notebook?
A. Approx. 1 hour
- Q. How long will this appliance take to fully charge my cell phone?
A. 4-8 hours
- Q. If the Jump Plus is fully charged, how many times can I jump start a vehicle?
A. Approx. 40 times.
- Q. What's the lifetime of mPower Jump Plus?
A. Usually 3-5 years under normal operating conditions.
- Q. How long does the battery last after fully charged?
A. 6-12 months, however, we suggest to recharge it every 3 months.
- Q. If the Jump Plus is fully charged, how long will the battery last to jump start a vehicle?
A. 6-12 months

F. TROUBLE SHOOTING:

Finding	Cause	Remedies
No response when pressing the switch button.	Low voltage protection of mPower Jump Plus is started.	Plug the adaptor into the 14V 1A input port to activate.
mPower Jump Plus is a bit hot when charging a Notebook	The charging current is a bit high (3.5A)	Remove the battery of your Notebook and use the appliance to supply power directly, or disconnect the power. Plug with your Notebook and connect them again when it cools down.

G. TOXIC AND HARMFUL SUBSTANCES:

Composition and amount of toxic and harmful substances in mPower Jump Plus					
Pb	Hg	Cd	Cr(VI)	PBB	PBDE
0	0	0	0	0	0

Q. Indicate all homogeneous materials' hazardous substances content are below the MCV limit specified in the Standard 2002/95/EC(RoHS).

- H. Warning:**
1. Always make sure the blue plug of the jumper cable is connected to the jump start socket tightly on the mPower Jump Plus before jump starting the vehicle. Otherwise, it will affect the results, even causing the blue plug to melt.
 2. Always check if the jumper clamps are well connected, check if the vehicle battery connector is rusted or dirty, clean it before jump starting the vehicle. DO NOT jump start again after 3 attempts. Otherwise, it will damage the host and void the warranty.
 3. DO NOT connect the two clamps. Otherwise, it may be dangerous!
 4. DO NOT disassemble the host. Otherwise, it may be dangerous!

The mPower Jump Plus can be damaged and void the warranty.

- Always take care when using the appliance
- This appliance is not intended for use by young or infirm persons without supervision
- Do not use as a toy
- Do not allow the appliance to become wet
- Do not immerse the appliance in water
- Do not operate the appliance in explosive atmospheres, such as in the presence of flammable liquids, gases or dust
- Do not modify or disassemble mPower Jump Plus. Only a repair technician may repair this unit
- Do not store in locations where the temperature may exceed 158°F
- Charge only at ambient temperatures between -4°F and 140°F
- Charge only using the charger provided with the appliance
- Under extreme conditions, battery leakage may occur. Carefully wipe the liquid off using a cloth and avoid skin or eye contact when you notice liquid on the batteries. In case of skin or eye contact, rinse immediately with clean water and seek medical attention
- At the end of their useful life, discard the appliance with due care for our environment and in accordance with government regulations

I. WARRANTY INFORMATION:

1. We offer a limited warranty for this product against any defects in material and workmanship for a period of 6 months from the date of purchase by the end user/consumer. The conditions of the warranty are as follows:
2. The warranty is only valid upon presentation of the original receipt (from dealer/retailer) by the original purchaser with the product to be repaired or replaced
3. The warranty is void if the serial number, date of purchase and label has been removed
4. The warranty does not cover damage or product failure resulting from normal wear and tear, physical abuse, improper installation, misuse, modification or repairs by unauthorized third parties
5. We do not assume responsibility for any loss or damage incurred during shipment or as a result of a force majeure
6. We are not liable for any incidental or consequential damages arising from the use or misuse of this product
7. All warranty claims are limited to repair or replacement of the defective product and at the sole discretion of us
8. If we repair or replace the product, the product will be covered for the remaining time of the original warranty period. Repair or replacement may involve the use of reconditioned units which are equivalent in function. Replaced part or product becomes the property of us
9. Consumable components such as batteries are not covered by the warranty

mPower Technologies, Inc.
587 Connecticut Ave.
Norwalk, CT 06854
1-877-674-2738

