



Installation Instructions

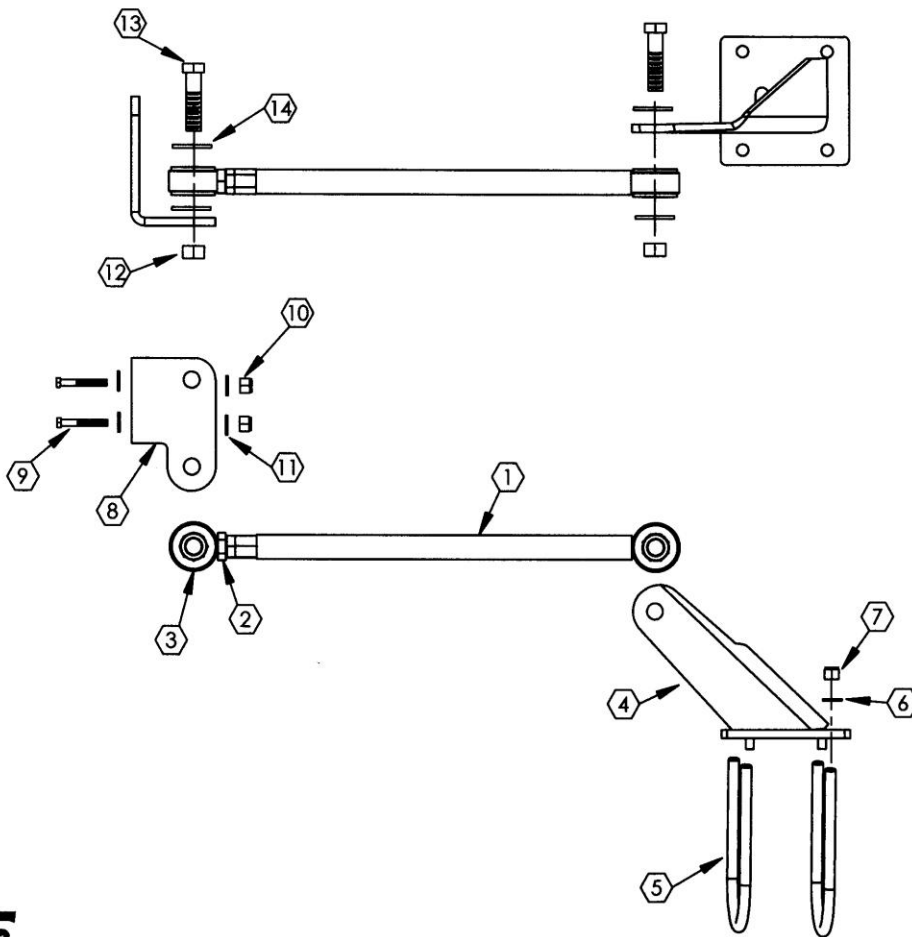
Part #SS306 - Rear Trac Bar

This product is designed to eliminate side shift of the rear axle on the W16 & W18 Workhorse Chassis

Installation time is 2 hours.

***A qualified mechanic using normal automotive tools and following all safety measures known should perform installation of this product. Components are shown below:**

SS306 TRAC BAR PARTS LAYOUT



ITEM #	Description	QTY
1	SS306 Rod Assy	1
2	Jam Nut - 3/4 16UNF	1
3	Rod End Assy	1
4	Axle Bracket Assy	1
5	U-Bolt 1/2 - 4 1/2x 6 1/2 Rd. Top	2
6	Flat Washer - 1/2	4
7	High Nut - 1/2 20UNF	4
8	Frame Bracket	1
9	Bolt - 1/2x2 1/2 13UNC	3
10	Nylock Nut - 1/2 13UNC	3
11	Flat Washer - 1/2	6
12	Top Lock Nut - 3/4 16UNF	2
13	Bolt - 3/4x3 16UNF	2
14	Flat Washer - 3/4	4

Item #	Torque Spec. (ft. lbs.)
2	100-150
7	140-150
9	100
13	150-180



Installation Instructions for Part # SS306 - Rear Trac Bar

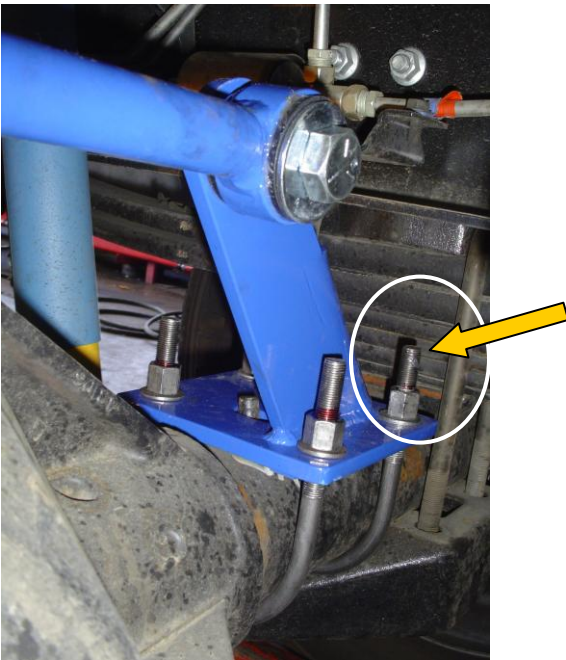
A. Preparation

Move the coach to a level, flat surface. If necessary, drive the rear wheels of the coach onto 4" high blocks and set the brakes or you may drive the coach over a work pit and chock the front wheels. Block off adequate space at the rear of the coach to work.

B. Installation of the Axle Bracket

The axle bracket fits on the driver's side, on top of the axle and is held on with the supplied U-bolts. On the back side of the axle tube you will see the brake line held on with a metal tab. Bend the tab out so you can move the brake line away from the axle tube (only about a 1/2"). This gives room for the U-bolts. Set the axle bracket on top of the axle tube and clamp with U-bolts. Torque nuts to 140-150 ft. lbs. **Precaution:** It may be necessary to cut the end of the U-bolt off on the frame side after it is tightened so it does not hit the frame rail as the suspension travels up and down.

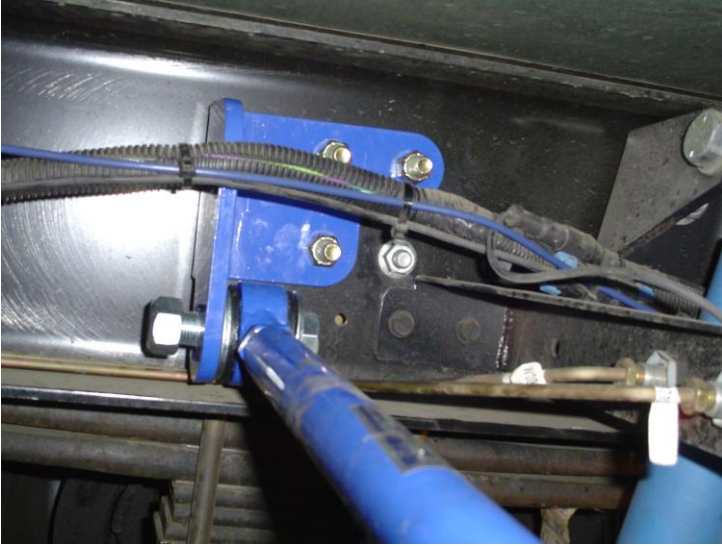
Note: The plate should be parallel with the ground.



Installation Instructions for Part # SS306 - Rear Trac Bar

C. Installation of the Frame Bracket

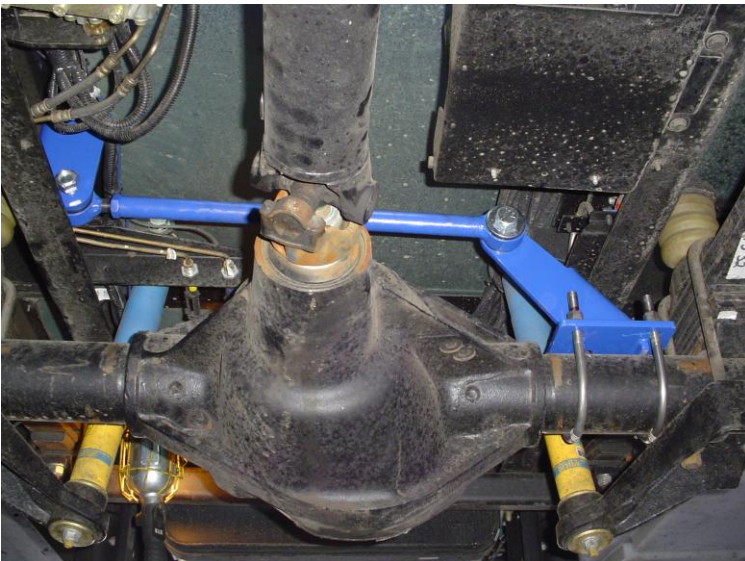
Begin by removing three nuts and bolts from the joust bumper (on the passenger side of the frame) as needed to bolt on frame bracket. Install the frame bracket on the inside of the frame by using the supplied bolts, nuts and washers. Torque to 100 ft. lbs.



D. Installation of Rod Assembly

With the coach at normal ride height, install the adjustable end of the rod assembly to the frame bracket. Use one of the supplied 3/4" x 3" bolts, two washers, and nut and assemble loosely. Adjust the length of the rod to reach the axle bracket and bolt on with the supplied 3/4" x 3" bolt, two washers, and nut.

Note: 3/4" Flat washers should be on both sides of the poly bushings.



Installation Instructions for Part # SS306 - Rear Trac Bar

E. Torque Specifications & Follow-Up

Tighten the 3/4" bolt and nut on the axle bracket to 150-180 ft. lbs. Tighten 3/4" bolt and nut on the frame bracket to spec. Lastly, tighten the jam nut on the rod assembly to 100-150 ft. lbs.

Double-check the fasteners to make sure all are properly torque.

Test drive. Complete and mail the warranty card.

Re-check torque in 6 months.

Your comments are greatly appreciated. Please contact SuperSteer® at 888-898-3281 or e-mail at john@supersteerparts.com

***Thank you for your purchase of the
SuperSteer® Rear Trac Bar.***