



Installation Instructions TC6507 Bracket Kit

Serial No.

The TC35270 steering control is recommended for use with this bracket kit.

1. Set front wheels of vehicle in straight ahead position.



2. Underneath the vehicle using an 11/16" socket and wrench, remove two bolts and nuts from shock mount bar on the driver's side.



3. Slide the Anchor Bracket (Item 3) on the axle on the driver's side. Install the 5/8-11 x 3" bolts and 5/8-11 lock nuts and tighten to manufacturers specs.



4. Install solenoid end of Item 1 to back of Anchor Bracket (Item 3) with 3/4-10 x 3 1/2" bolt, 3/4" flat washers and 3/4-10 flange nut (Items 7, 8 and 9), according to drawing on page 3. Tighten to 180-200 ft/lbs of torque.



5. Install Tie Rod Bracket (Item 4) on the passenger's side using 3/8-16 x 1.375 U-bolts and 3/8-16 nuts, according to drawing on page 3. Tip the bracket down to avoid hitting other parts. **DO NOT TIGHTEN.** *Item 4 may be rotated or flipped to insure Steering Control (Item 1) remains parallel to the ground.*



6. Install small end of TruCenter unit (Item 1) to the Tie Rod Bracket (Item 4) with 3/4-10 x 3 1/2" bolt, 3/4" flat washers and 3/4-10 flange nut (Items 7, 8 and 9), see drawing on page 3. Allow enough slack for the Tie Rod Bracket (Item 4) to rotate for alignment to the tie rod. DO NOT FULLY TIGHTEN.



7. Tighten U-bolts (Item 10 or 11) on the Tie Rod Bracket (Item 4) to 25-35 ft/lbs of torque, while maintaining an even amount of threads extending past each nut.

8. Tighten bolt, washers and nut (Items 7, 8, and 9) on the Tie Rod Bracket (Item 4) to 180-200 ft/lbs of torque.

Note: Check to be sure installed unit clears all other parts of vehicle by turning steering wheel to both extreme right and left positions. If unit scrapes or binds at any point, make necessary corrections by rotating unit on tie rod to obtain necessary clearance. It may also be necessary to dump the air from the air suspension to insure that the RV's trac bar and fuel tank do not come in contact with the TruCenter. If needed the solenoid end of TruCenter can then be mounted on the opposite side of Item 1.



9. Install TruCenter Steering Control wiring according to instructions included in its package.



10. DEALER OR INSTALLER: BE CERTAIN USER RECEIVES INSTRUCTION SHEET.

Insure that you use the proper TruCenter steering control unit for your application. Using too strong or too weak of a steering control may result in improper or undesirable handling.

Product Safety Policy Statement

It is, and shall continue to be, a primary objective of Blue Ox Towing Products to provide customers with safe and reliable products. Blue Ox will, and has, established safety procedures in product design, manufacture, promotion and sales; and will coordinate efforts to promote customer safety to the greatest extent possible. Each department has primary responsibility for the promotion of safety under the guidelines of the Product Safety Committee.

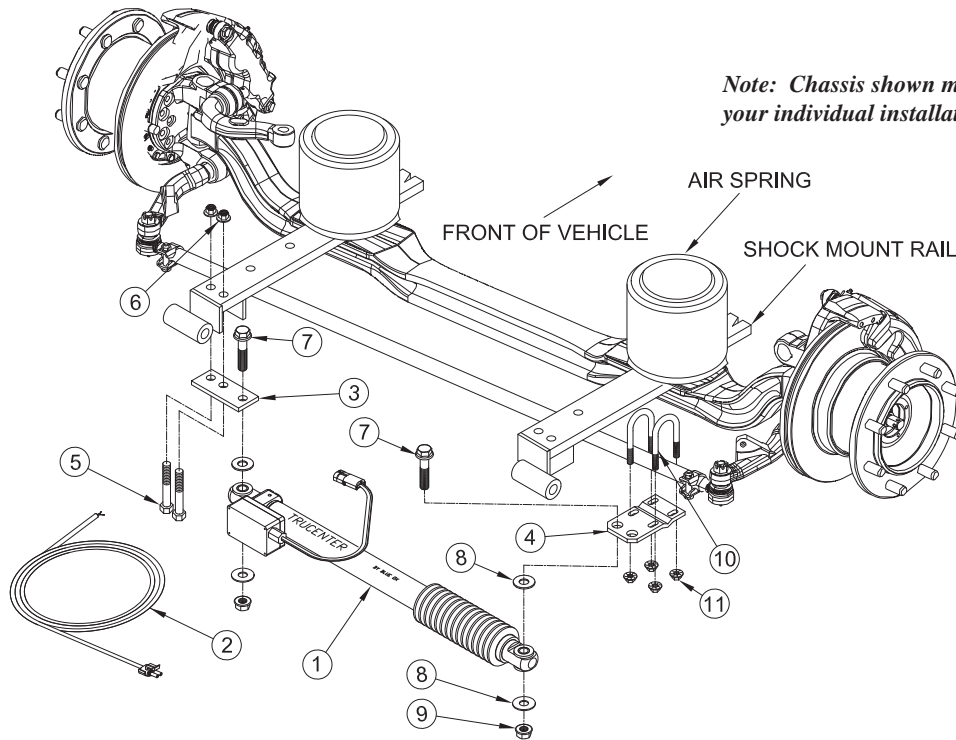
© 2010 Blue Ox
 One Mill Road, Industrial Park
 Pender, Nebraska 68047
 Phone 402-385-3051
 Toll Free 888-425-5382
 Fax 402-385-3360
 www.blueox.com

Tools Required

9/16" Socket

11/16" Socket/Wrench

1 1/8" Socket/Wrench



Parts List

Ref. No.	Qty.	Part No.	Description
1*	1	TC35270	TRUCENTER STEERING 35IN. X 270 LBS
2*	1	62-3631	CORD, WEATHER TIGHT ASSY, FML, TC
3	1	102-7078	PLATE, ANCHOR BRKT, TC6507
4	1	102-6343	BRKT, TIE ROD, 206
5	2	201-0775	5/8-11 X 3 HEX HD BOLT, GRD.5, ZP
6	2	202-0073	5/8-11 FLANGE WHIZ LOCK NUT ZP
7*	2	201-0780	BOLT, 3/4-10 X 3 1/2, 1.59IN FLANGE
8*	4	203-0007	3/4 FLAT WASHER, ZP
9*	2	202-0180	NUT,3/4-10, 1.59 FLANGE, GRD. 8, ZP
10	2	201-0715	U-BOLT, 3/8-16 X 1.375 GR5 ZP
11	2	202-0174	3/8-16, CENT. DIMP. FLNG, NUT, ZP

*items are purchased separately in the TC35270 steering control kit.

IMPORTANT: Use only genuine factory replacement parts on your bracket kit. Do not substitute homemade or nontypical parts. If a bolt is lost or in need of replacement, for your safety and the preservation of your bracket kit, be sure to use a replacement bolt of the same grade. Repair parts may be ordered through your nearest **Blue Ox** dealer or distributor.

If the TruCenter is in an accident, it must be replaced. **DO NOT** use it again! An accident can cause unseen damage and using it again could result in more damage or serious injury. **DO NOT** use the TruCenter if it is damaged or missing parts.



© 2010 Blue Ox
 One Mill Road, Industrial Park
 Pender, Nebraska 68047
 Phone 402-385-3051
 Toll Free 888-425-52823
 Fax 402-385-3360
www.blueox.com