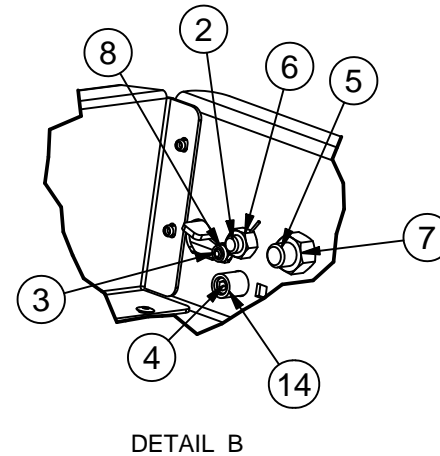
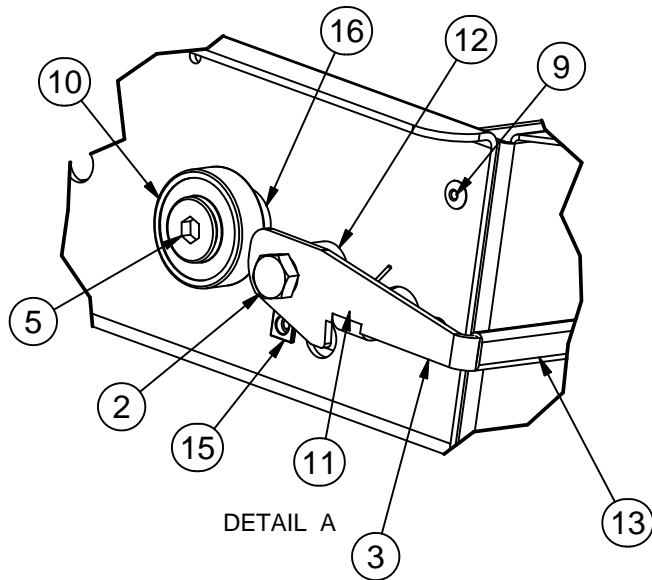
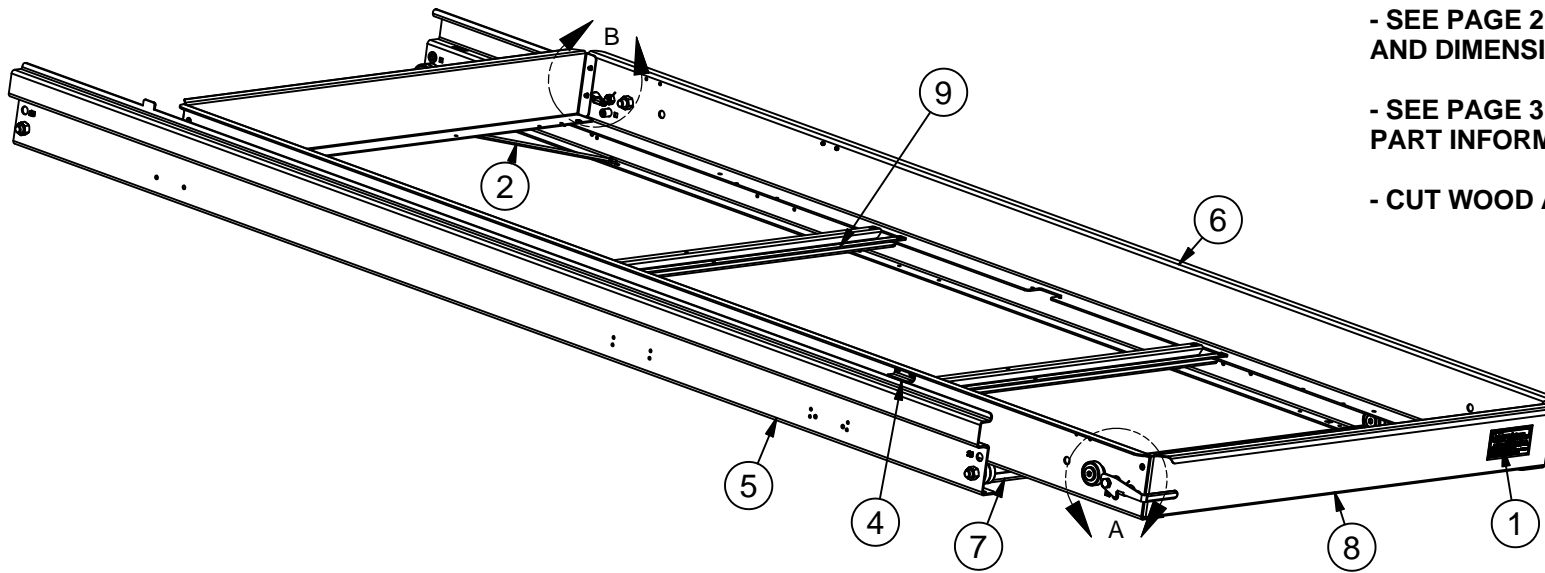


- CT - POWDER COAT BLACK
 - CTG - POWDER COAT GRAY

- SEE PAGE 2 FOR PART NUMBER CHART
 AND DIMENSIONAL INFORMATION

- SEE PAGE 3 FOR REPLACEMENT
 PART INFORMATION

- CUT WOOD AND CARPET TO FIT (SP56-079)



Parts List		
ITEM	QTY	PART NUMBER
1	2	CARGO TRAY STICKER
2	2	CT205-001
3	2	CT213-001
4	2	CT213-058
5	2	CT227-090
6	2	CT228-090
7	2	CTG224-Width
8	2	CTG225-Width
9	2	CTG226-Width
2	2	UO115-013
3	2	UO115-298
4	4	UO115-359
5	8	UO115-372
6	2	UO116-002
7	8	UO116-094
8	2	UO116-105
9	32	UO136-137
10	12	UO136-441
11	2	UO136-486R
12	2	UO136-488
13	2	UO136-496
14	4	UO136-605
15	4	UO136-638
16	4	UO136-707
17	4	UO136-758

DRAWN: Jon Kauffman	CHECKED: DATE: 8/2/2011
MATERIAL: STEEL	
FINISH: SEE NOTE	
ALL DIMENSIONS ARE O.D. UNLESS OTHERWISE NOTED TOLERANCE OF DIMENSIONS (INCHES) UNLESS OTHERWISE SPECIFIED:	
LASER:	2 PLACES ± 0.020 3 PLACES ± 0.010
BRAKE:	2 PLACES ± 0.063 3 PLACES ± 0.031
WELDING:	2 PLACES ± 0.063 3 PLACES ± 0.031
SHOP ENG:	2 PLACES ± 0.030 3 PLACES ± 0.010
CUTOFF:	± 0.031
ANGULAR:	± 1°
FLATNESS:	± 06/10.00

CTG60-XX90

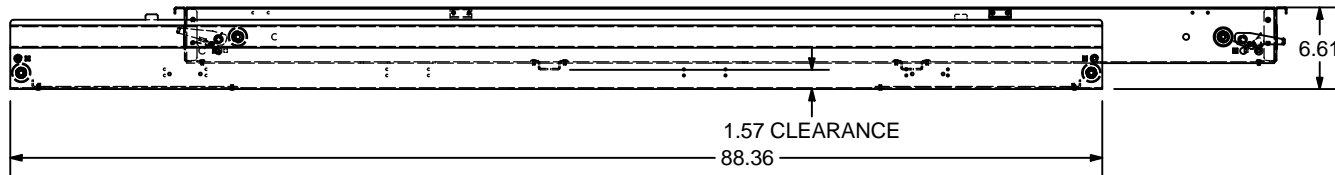
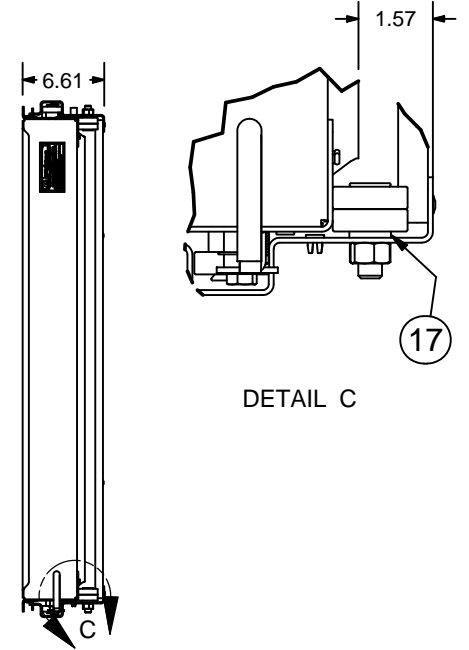
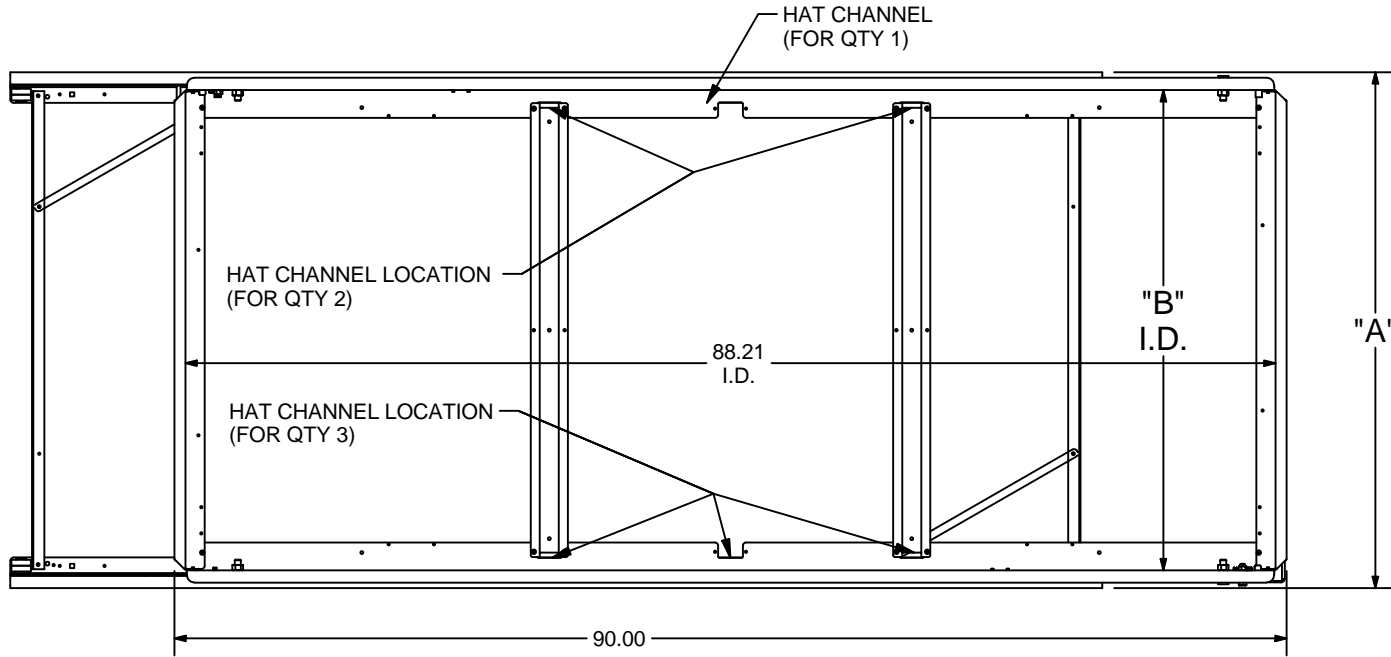
CARGO SLIDE XX" x 90"



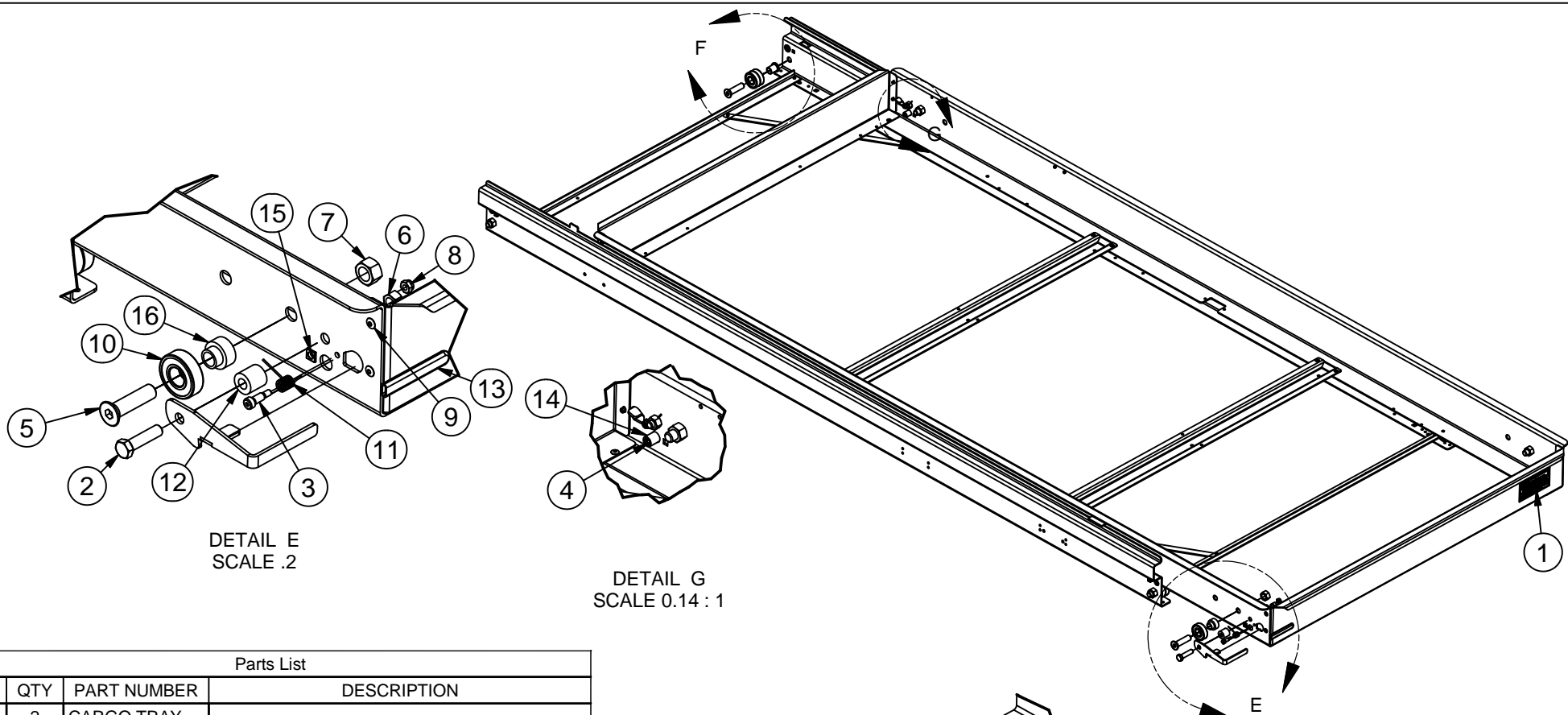
THIS DRAWING & THE INFORMATION CONTAINED THEREON ARE
 THE EXCLUSIVE PROPERTY OF MORRYDE. THEY SHALL NOT
 BE COPIED OR DUPLICATED WITHOUT OUR CONSENT.

Table			
Part Number	Dim. "A"	Dim. "B"	# OF HAT CHANNELS
CTG60-2090W	19.74	16.85	1
CTG60-2690W	25.74	22.85	1
CTG60-2990W	28.74	25.85	1
CTG60-3390W	32.74	29.85	2
CTG60-3690W	35.74	32.85	2
CTG60-3990W	38.74	35.85	2
CTG60-4290W	41.74	38.85	2
CTG60-4890W	47.74	44.85	3
CTG60-5290W	51.74	3	

- CT - POWDER COAT BLACK
- CTG - POWDER COAT GRAY
- CUT WOOD AND CARPET TO FIT (SP56-079)



DRAWN: Jon Kauffman	CHECKED: DATE: 8/2/2011	CTG60-XX90
MATERIAL: STEEL		CARGO SLIDE XX" x 90"
FINISH: SEE NOTE		
ALL DIMENSIONS ARE O.D. UNLESS OTHERWISE NOTED		
TOLERANCE OF DIMENSIONS (INCHES)		
UNLESS OTHERWISE SPECIFIED:		
LASER: 2 PLACES ± 0.020 3 PLACES ± 0.010 BRAKE: 2 PLACES ± 0.063 3 PLACES ± 0.031 WELDING: 2 PLACES ± 0.063 3 PLACES ± 0.031 SHOP ENG: 2 PLACES ± 0.030 3 PLACES ± 0.010 CUTOFF: ± 0.031		
ANGULAR: ± 1° FLATNESS: ± 0.6/10.00		THIS DRAWING & THE INFORMATION CONTAINED THEREON ARE THE EXCLUSIVE PROPERTY OF MORRYDE. THEY SHALL NOT BE COPIED OR DUPLICATED WITHOUT OUR CONSENT. SHEET 2 OF 3




DETAIL E
SCALE .2

DETAIL G
SCALE 0.14 : 1

DETAIL F
SCALE .2

Parts List

ITEM	QTY	PART NUMBER	DESCRIPTION
1	2	CARGO TRAY STICKER	
2	2	UO115-013	BOLT - 3/8-16 x 1-1/2" HHCS
3	2	UO115-298	BOLT - 10-24 SHOULDER OD x 1/4" x 1/2" LG
4	4	UO115-359	BOLT - 3/8-16 x 3/4" NYLON SET SCREW
5	8	UO115-372	BOLT - 1/2-13 x 2" FLAT HEAD SOCKET
6	2	UO116-002	NUT - 3/8-16 CENTER LOCK ZINC
7	8	UO116-094	NUT - 1/2-13 CENTER LOCK ZINC
8	2	UO116-105	NUT - 10-24 NYLON LOCK NUT
9	32	UO136-137	3/16 RIVET
10	12	UO136-441	BEARING - .668" ID x 1.575" OD x .47" WIDE
11	2	UO136-486R	TORSION SPRING 0.404 OD
12	2	UO136-488	PLASTIC SPACER - .38" ID x .75" OD .75" LG
13	2	UO136-496	YELLOW RUBBER GRIP
14	4	UO136-605	RIVET NUT - 3/8-16
15	4	UO136-638	NYLON GROMMET NUT, .060 HEAD HEIGHT
16	4	UO136-707	SINGLE BEARING SLEEVE - PLASTIC
17	4	UO136-758	DOUBLE BEARING SLEEVE - PLASTIC

DRAWN: Jon Kauffman	CHECKED: 8/2/2011	DATE:	CTG60-XX90 NONE
MATERIAL: STEEL			
FINISH: VARIOUS			 <small>Elkhart, Indiana</small>
<small>ALL DIMENSIONS ARE O.D. UNLESS OTHERWISE NOTED TOLERANCE OF DIMENSIONS (INCHES) UNLESS OTHERWISE SPECIFIED:</small>			
<small>LASER: 2 PLACES ± 0.020 3 PLACES ± 0.010 BRAKE: 2 PLACES ± 0.063 3 PLACES ± 0.031 WELDING: 2 PLACES ± 0.063 3 PLACES ± 0.031 SHD. ENG: 2 PLACES ± 0.030 3 PLACES ± 0.010 CUTOFF: ± 0.031</small>		<small>ANGULAR: ± 1° FLATNESS: ± .06/10.00</small>	
<small>THIS DRAWING & THE INFORMATION CONTAINED THEREON ARE THE EXCLUSIVE PROPERTY OF MORRYDE. THEY SHALL NOT BE COPIED OR DUPLICATED WITHOUT OUR CONSENT.</small>			<small>SHEET 3 OF 3</small>