



Chevy Trail Blazer
GMC Envoy

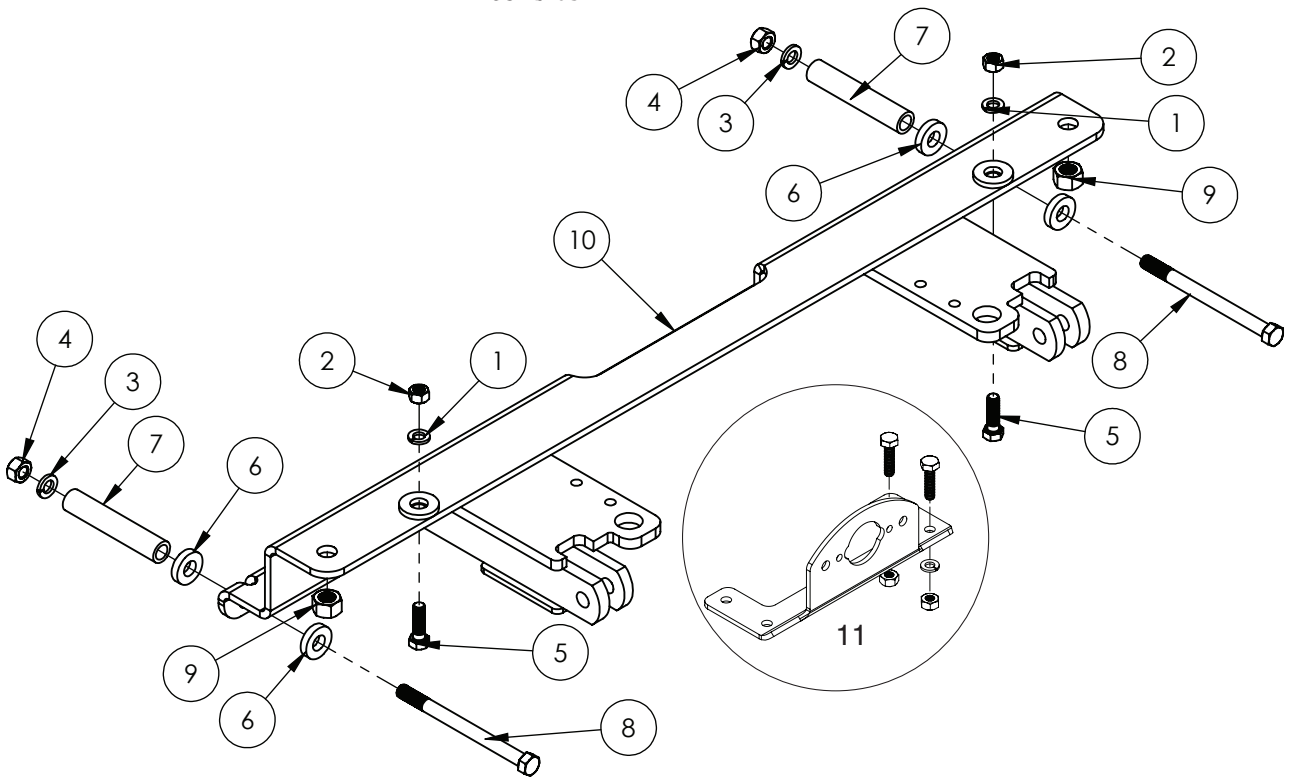
BASEPLATE

BOLT TORQUE SPECIFICATIONS

STANDARD BOLTS:			METRIC BOLTS:	
Size	Grade	Torque	Size	Torque
5/16"	5	20 ft/lbs.	8mm	22 ft/lbs.
3/8"	5	35 ft/lbs.	10mm	42 ft/lbs.
7/16"	5	56 ft/lbs.	12mm	70 ft/lbs.
1/2"	5	85 ft/lbs.	14mm	95 ft/lbs.

Pin Height-16-1/2"

Centers-20-1/8"



9518119 PARTS LIST

REF. NO.	PART NO.	QTY.	DESCRIPTION
1.	00060	2	3/8" Lock washer
2.	00061	2	3/8" NC Hex Nut
3.	00078	2	7/16" Lock Washer
4.	00079	2	7/16"NC Hex Nut
5.	00523	2	3/8" NC x 1-1/4" Hex Bolt
6.	07942-95	4	Spacer Washer
7.	10833-95	2	Spacer Bushing
8.	10834	2	7/16"NC x 5-1/2" Hex Bolt
9.	10835	2	14mm-2.00 Hex Nut
10.	13128-35	1	Base Plate Crossmember
11.	5937	1	Plug Mount Kit
12.	12329	1	Loctite(not shown)



Please order replacement parts by PART NO. and DESCRIPTION.

ASSEMBLY
OPERATION
REPLACEMENT PARTS

READ complete manual CAREFULLY
BEFORE attempting operation.

Doing Our Best to Provide You the Best

WARNING: FAILURE TO FOLLOW THESE INSTRUCTIONS CAN RESULT IN LOSS OF TOWING VEHICLE CONTROL, SEPARATION OF THE TOW BAR FROM THE TOWING VEHICLE, SEPARATION OF THE TOWED VEHICLE FROM THE TOW BAR, CAUSING SEVERE PERSONAL INJURY, DEATH, OR PROPERTY DAMAGE.

CAUTION

Safety is of utmost importance at all times. There are several items that must be checked each time before using and while using a tow bar. Before allowing anyone to hook up or operate a tow bar, be sure they have read and understand the proper operating procedure.

DO NOT use worn or damaged cables and/or pins.

Be sure the **SAFETY CABLES** are hooked, chassis to chassis, to both the towing and towed vehicles using the crisscross method.

Check clearance between vehicles in a turning situation.

Check base plate mounting bolts for tightness and frame for metal fatigue.

Do not load the towed vehicle with anything as you may exceed the towing capacity of the tow bar.

Keep fingers away from pivot points to prevent personal injury.


Be sure the steering components of the towed vehicle are properly aligned.

NOTE: This unit can be backed up in moderate increments. Any severe backwards cornering could result in damage to the Tow Bar and/or towed vehicle chassis.

For automatic transmissions: Consult your vehicle owners manual for towing suitability with the drive shaft connected. Otherwise, the towed vehicle will have to be equipped with a transmission pump or drive shaft disconnect.

Check to make sure that all lights are in proper working order.

The information on towability of vehicles is reprinted with permission of MotorHome® Magazine, and is believed to be reliable. However, Demco does not warrant the information to be correct. Always consult your towed vehicle owner's manual and follow towing instructions. Each year, MotorHome® Magazine, compiles a list of vehicles that can be towed four-down behind a motorhome with no modifications required. This guide contains only those vehicles that have been approved by their manufacturers for towing.

 **Caution: MotorHome® Magazine** left out any vehicles that have towing speed limits slower than 55 m.p.h., or distance limits of less than 200 miles. At a minimum, these vehicles require significant modification, such as the use of an aftermarket product, to make them towable. The availability of a **Demco Tow Bar Base Plate** does not imply that these vehicles can be modified or that there is an aftermarket product available. Refer to your vehicle owner's manual or consult your dealer to determine whether your vehicle can be modified to make it towable. Failure to observe this precaution could result in property damage or personal injury.



1. **Chevy Trailblazer:** Open hood and carefully pull grill straight out. Be careful in headlight area when pulling on grill extension.

IMPORTANT INSTALLATION ITEMS

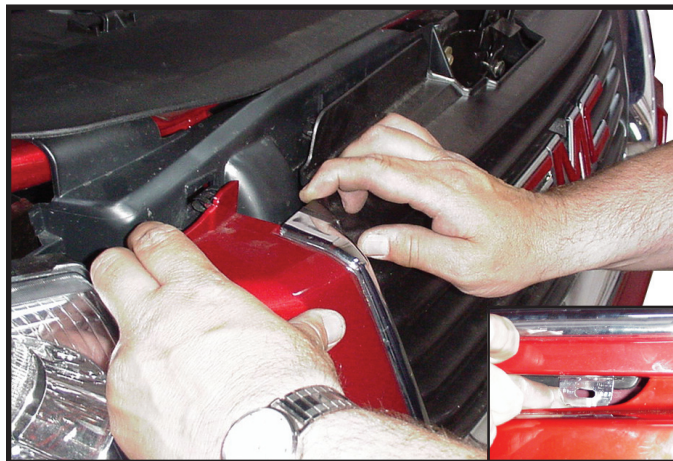
DEMCO products and accessories are intended to be installed by professional installers with experience, proper equipment and the ability to do modification work. Installers with these qualifications can be found in RV and Automotive Service Centers.

If the car to be towed has been in an accident, the chassis may be damaged in an area where the Base Plate attaches. It may no longer be suitable for towing. Extreme caution and careful examination are required in such a situation. It is also likely, even from a minor accident, that the hole alignment will be more difficult due to hole alignment problems.

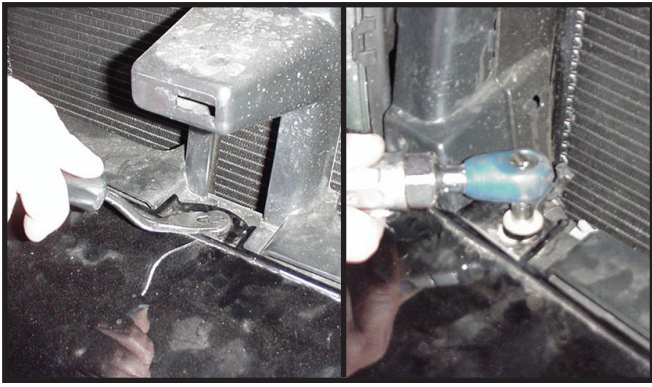
Many DEMCO Base Plates are designed to use existing holes and hardware to mount the Base Plate to the towed vehicle. Even though the bolt is there, however, do not assume it is adequate for mounting the Base Plate. Manufacturers make many changes in hardware both within and between model years. Be sure the bolt is long enough to protrude past the nut a distance no less than 1/2 the diameter of the bolt, after the Base Plate is mounted. The threads should be in good condition. **We require that "LOCTITE® Blue" be used on all bolts.** If a new bolt is required, be sure it is SAE Grade 5 or Metric 8.8.

NOTE: The dimensional variations between otherwise identical vehicles can be considerable. Some minor modifications may have to be made to ensure a proper fit.

INSTALLATION INSTRUCTIONS



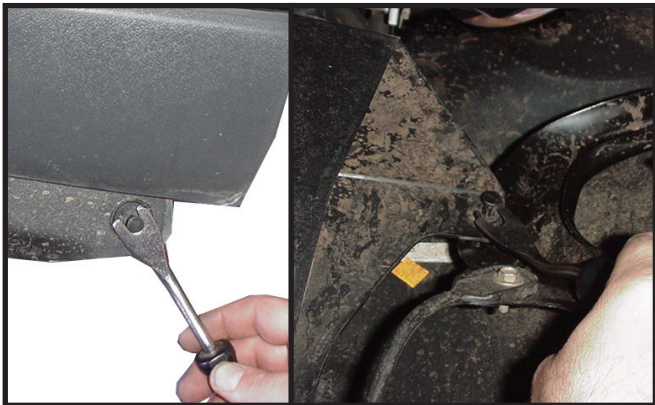
1. **GMC Envoy:** Open hood and carefully pull grill on top to release. Carefully pull tab on bottom of grill forward while pulling up on grill. Rest grill on top of engine compartment if equipped with headlight washers.



2. Remove one plastic push fastener and two bolts from top of bumper.



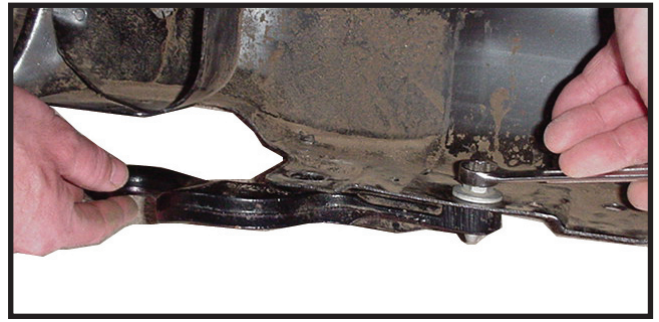
3. Remove four plastic push fasteners from middle of fascia, under bumper.



4. Remove one push fastener from each side at bottom of fascia, at end of air dam. Also, one push fastener from each side, inside of fascia to bumper. Unplug fog lights if equipped and carefully pull fascia straight off.



5. Remove bumper by removing large bolt from top side, one on each side.



- 6a. After bumper is off, remove both tow hooks, if equipped, from bottom side of bumper. Tow hooks and tow hook bolts will not be reused.



- 6b. If not equipped with tow hooks, remove nut clips from bumper. Nut clips will not be reused.

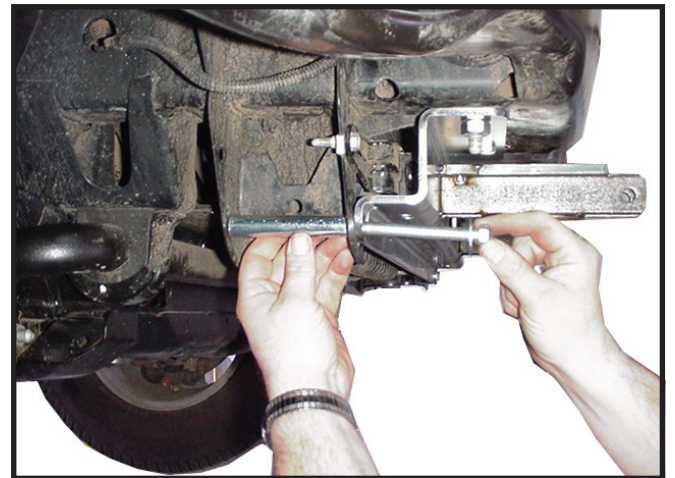
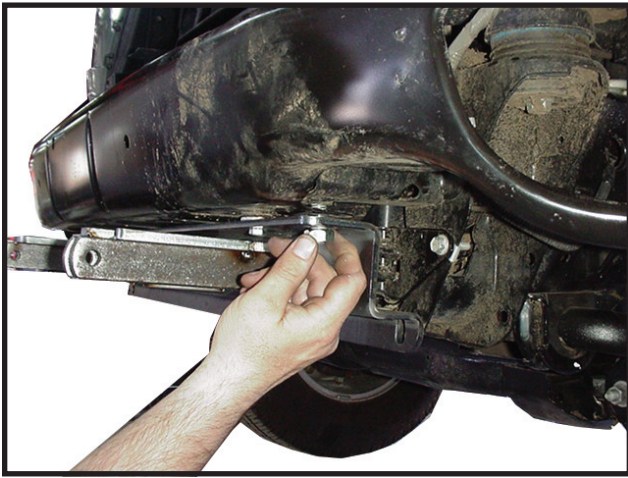


7. Remove plastic panel from inside of bumper. This will not be reused.



8. Bolt base plate to bottom side of bumper, using two 3/8" x 1-1/4" bolts, 3/8" lock washers and 3/8" nuts. Tighten these bolts when large hole in base plate is centered with large hole in bumper.

NOTE: Use **LOCTITE** on all bolts and tighten according to chart on front page.



9. Put bumper back on and install both large bolts previously removed and tighten using the 14mm nuts provided. **NOTE:** Use **LOCTITE** Blue on all bolts and tighten according to chart on front page.

10. Put 1/4" spacer washer behind baseplate's slotted hole on each side and use 7/16" x 5-1/2" bolts, 1/4" spacer washers, 4" bushing spacers, 7/16" lock washers and 7/16" nuts. Tighten these bolts. **NOTE:** A longer bolt may be required when mounting baseplate with skid plate. You may also need to drill out hole on skid plate.



11. Reinstall fascia and all hardware.

12. Plug mount (item #11) may be installed if desired in convenience holes on either chain anchor or as desired. **NOTE:** Excess material may be trimmed from bracket.

Demco

P.O. BOX 189
4010 320th St., BOYDEN, IA. 51234
PH: (712) 725-2311
FAX: (712) 725-2380
TOLL FREE: 1-800-54DEMCO (1-800-543-3626)
www.demco-products.com

Go online to www.demco-products.com for Demco warranty policies & product registration.