



Jeep Grand Cherokee
Dodge Durango

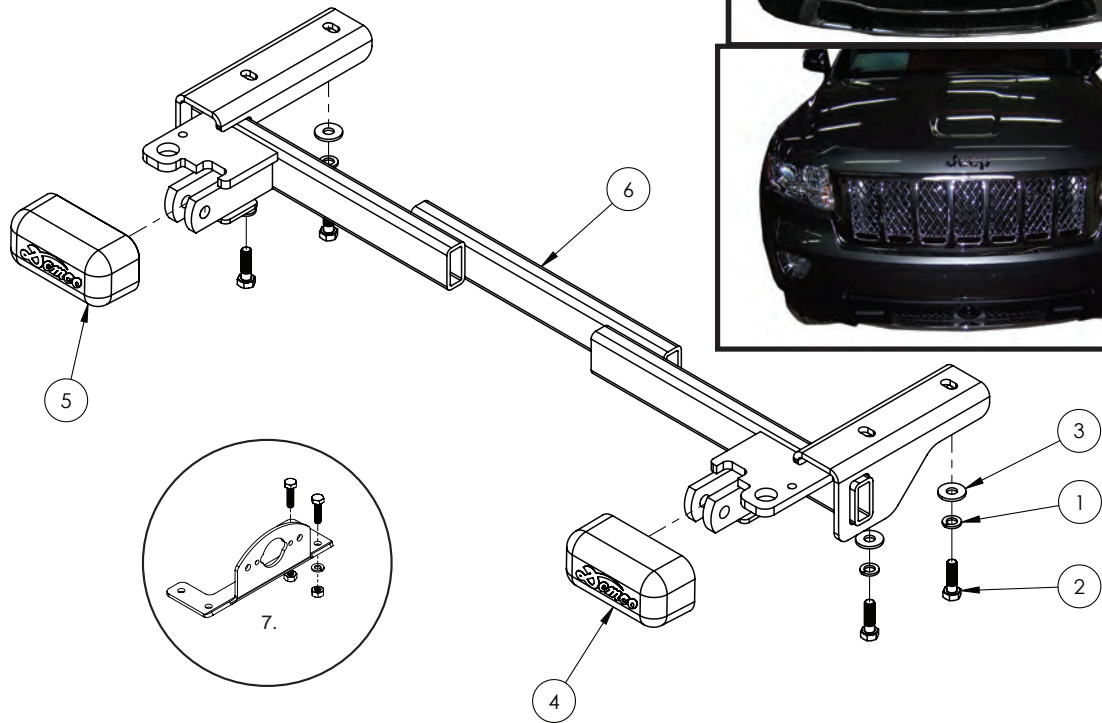


BOLT TORQUE SPECIFICATIONS

STANDARD BOLTS:			METRIC BOLTS:	
Size	Grade	Torque	Size	Torque
5/16"	5	20 ft/lbs.	8mm	22 ft/lbs.
3/8"	5	35 ft/lbs.	10mm	42 ft/lbs.
7/16"	5	56 ft/lbs.	12mm	70 ft/lbs.
1/2"	5	85 ft/lbs.	14mm	95 ft/lbs.

BASEPLATE

Pin height - 18-1/2" Centers - 28-3/4"



9518291 PARTS LIST



REF. NO.	PART NO.	QTY.	DESCRIPTION
1.	07284	4	10mm Lock Washer
2.	07291	4	10mm-1.50 x 35mm Hex Bolt GR.8.8
3.	09229	4	10mm Flat Fender Washer
4.	12979	1	Pull Ear Cover "A"
5.	12980	1	Pull Ear Cover "B"
6.	14074-35	1	Baseplate Crossmember
7.	5937	1	Plug Mount Kit
8.	09551	4	Plastic Pop Rivet (not shown)
9.	12329	1	Loctite (not shown)

Please order replacement parts by **PART NO.** and **DESCRIPTION.**

ASSEMBLY
OPERATION
REPLACEMENT PARTS

READ complete manual **CAREFULLY**
BEFORE attempting operation.

Doing Our Best to Provide You the Best

NOTES

WARRANTY POLICY & REGISTRATION

Go online to www.demco-products.com to review Demco warranty policies and register your Demco product.

WARNING: FAILURE TO FOLLOW THESE INSTRUCTIONS CAN RESULT IN LOSS OF TOWING VEHICLE CONTROL, SEPARATION OF THE TOW BAR FROM THE TOWING VEHICLE, SEPARATION OF THE TOWED VEHICLE FROM THE TOW BAR, CAUSING SEVERE PERSONAL INJURY, DEATH, OR PROPERTY DAMAGE.



CAUTION

Safety is of utmost importance at all times. There are several items that must be checked each time before using and while using a tow bar. Before allowing anyone to hook up or operate a tow bar, be sure they have read and understand the proper operating procedure.

DO NOT use worn or damaged cables and/or pins.

Be sure the **SAFETY CABLES** are hooked, chassis to chassis, to both the towing and towed vehicles using the crisscross method.

Check clearance between vehicles in a turning situation.

Check base plate mounting bolts for tightness and frame for metal fatigue.

Do not load the towed vehicle with anything as you may exceed the towing capacity of the tow bar.

Keep fingers away from pivot points to prevent personal injury.

Be sure the steering components of the towed vehicle are properly aligned.

NOTE: This unit can be backed up in moderate increments. Any severe backwards cornering could result in damage to the Tow Bar and/or towed vehicle chassis.

For automatic transmissions: Consult your vehicle owners manual for towing suitability with the drive shaft connected. Otherwise, the towed vehicle will have to be equipped with a transmission pump or drive shaft disconnect.

Check to make sure that all lights are in proper working order.

The information on towability of vehicles is reprinted with permission of MotorHome® Magazine, and is believed to be reliable. However, Demco does not warrant the information to be correct. Always consult your towed vehicle owner's manual and follow towing instructions. Each year, MotorHome® Magazine, compiles a list of vehicles that can be towed four-down behind a motorhome with no modifications required. This guide contains only those vehicles that have been approved by their manufacturers for towing.



Caution: MotorHome® Magazine left out any vehicles that have towing speed limits slower than 55 m.p.h., or distance limits of less than 200 miles. At a minimum, these vehicles require significant modification, such as the use of an aftermarket product, to make them towable. The availability of a **Demco Tow Bar Base Plate** does not imply that these vehicles can be modified or that there is an aftermarket product available. Refer to your vehicle owner's manual or consult your dealer to determine whether your vehicle can be modified to make it towable. Failure to observe this precaution could result in property damage or personal injury.

IMPORTANT INSTALLATION ITEMS

DEMCO products and accessories are intended to be installed by professional installers with experience, proper equipment and the ability to do modification work. Installers with these qualifications can be found in RV and Automotive Service Centers.

If the car to be towed has been in an accident, the chassis may be damaged in an area where the Base Plate attaches. It may no longer be suitable for towing. Extreme caution and careful examination are required in such a situation. It is also likely, even from a minor accident, that the hole alignment will be more difficult due to hole alignment problems.

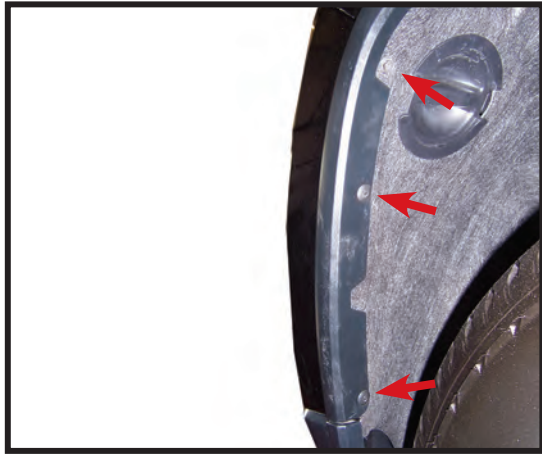
Many DEMCO Base Plates are designed to use existing holes and hardware to mount the Base Plate to the towed vehicle. Even though the bolt is there, however, do not assume it is adequate for mounting the Base Plate. Manufacturers make many changes in hardware both within and between model years. Be sure the bolt is long enough to protrude past the nut a distance no less than 1/2 the diameter of the bolt, after the Base Plate is mounted. The threads should be in good condition. **We require that "LOCTITE® Blue" be used on all bolts.** If a new bolt is required, be sure it is SAE Grade 5 or Metric 8.8.

NOTE: The dimensional variations between otherwise identical vehicles can be considerable. Some minor modifications may have to be made to ensure a proper fit.

INSTALLATION INSTRUCTIONS

JEEP GRAND CHEROKEE

FOLLOW LEFT SIDE OF PAGE



1. Drill out two plastic rivets from each wheel well with 3/16" drill bit. Remove rivets and one bolt on each side.



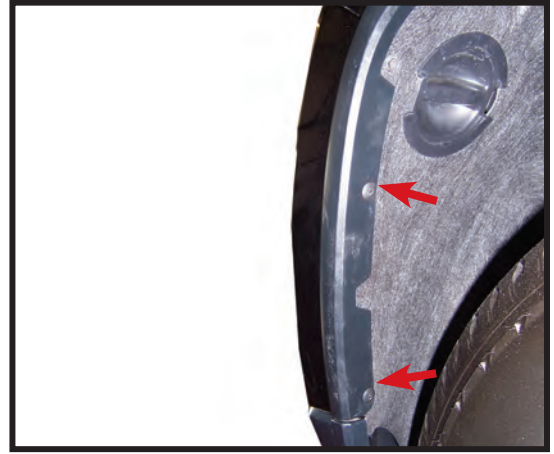
2. Carefully pull out on molding trim attached to side of fascia.



3. **2014 model only:** remove two plastic push fasteners from top of grill and release top of grill.

DODGE DURANGO

FOLLOW RIGHT SIDE OF PAGE



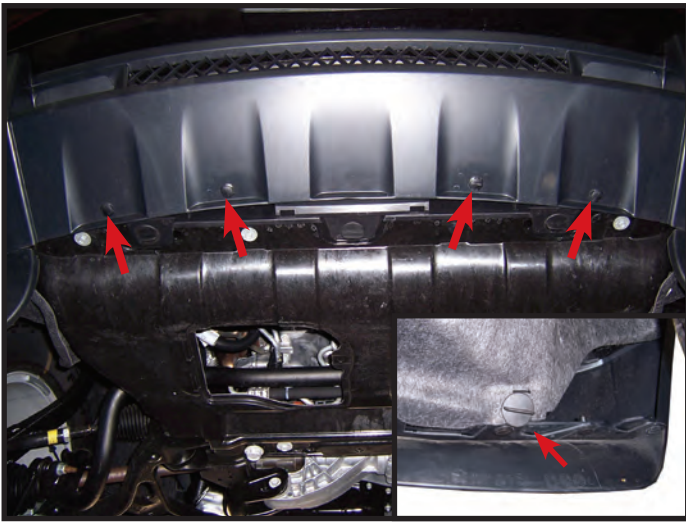
1. Drill out two plastic rivets from each wheel well with 3/16" drill bit. Remove rivets on each side.



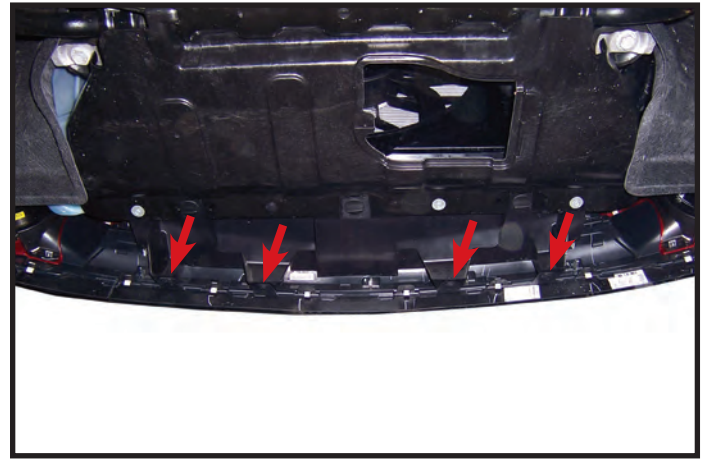
2. Carefully pull out on molding trim attached to side of fascia.



3. Remove one screw from fascia by trim molding and one screw from inner wheel well to bottom of fascia.



4. Remove four plastic push fasteners from bottom of fascia, and one turn clip on each side front of wheel well to fascia.



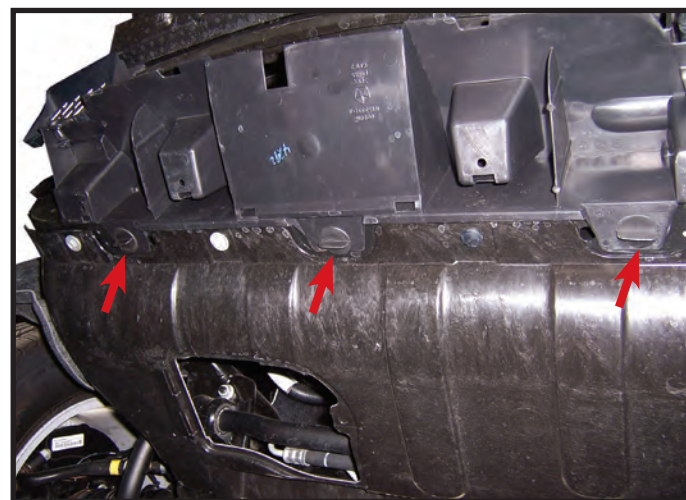
4. Remove four plastic push fasteners from bottom of fascia.



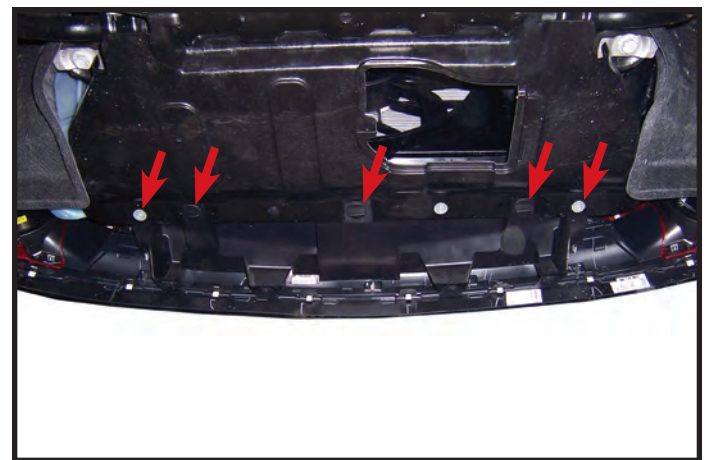
5. Carefully pull fascia out on each side by fender and pull fascia forward to remove. Unplug fog light if equipped.



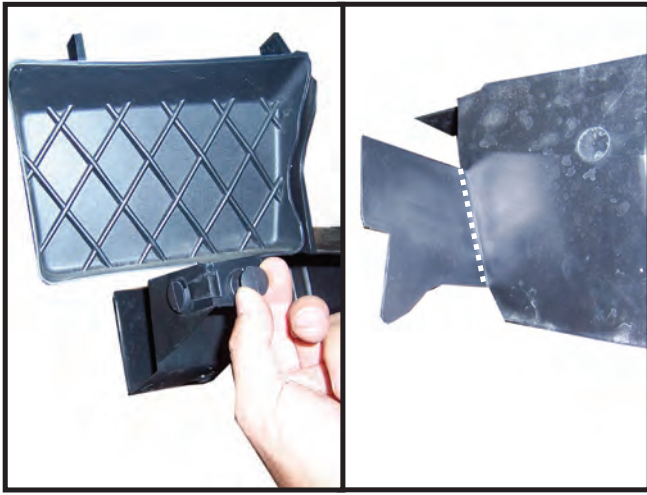
5. Carefully pull fascia out on each side by fender and pull fascia forward to remove. Unplug fog light if equipped.



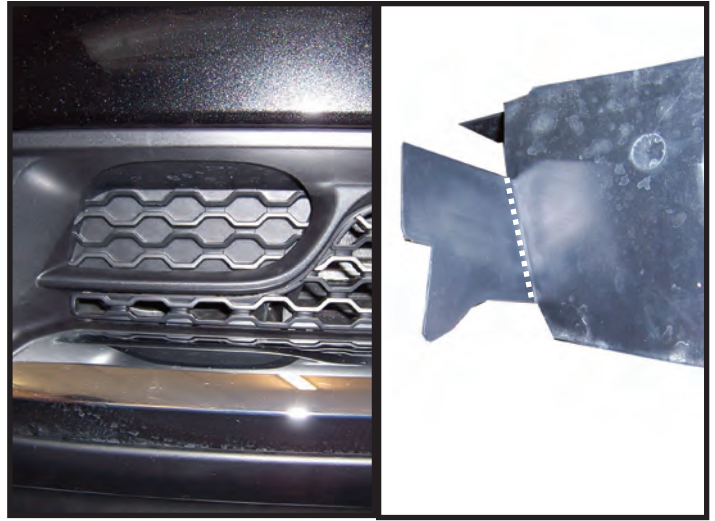
6. Temporarily remove air deflector by removing three turn clips



6. Temporarily remove air deflector by removing three turn clips and two screws on outer edge.



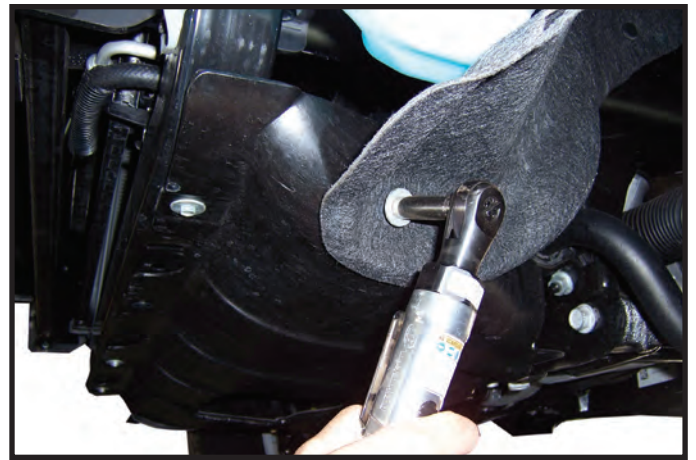
7. Remove tow hook covers if equipped, and cut the air deflector as pictured with dotted line.



7. Remove tow hook covers if equipped, and cut the air deflector as pictured with dotted line.

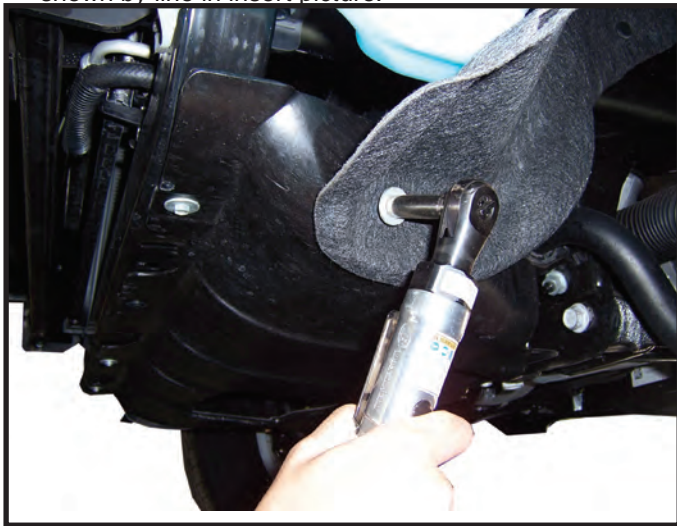


7a. **2014 model only:** trim air deflector as shown by cutting on each side on line as shown in picture and on passenger side cut air deflector attached to radiator as shown by line in insert picture.



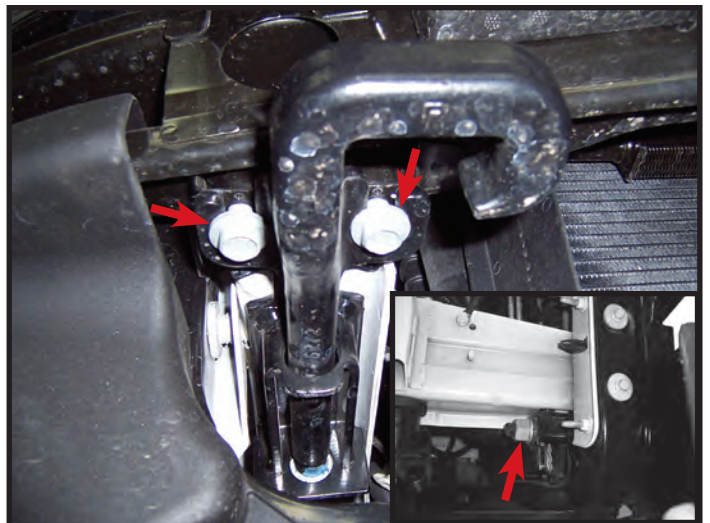
8. On drivers side, remove one bolt from front of wheel well to the side of skid plate to gain access to rear baseplate mounting hole. Repeat for other side if equipped with tow hooks.

If equipped with tow hooks continue on with step 9, if not equipped with tow hooks skip to step 17.

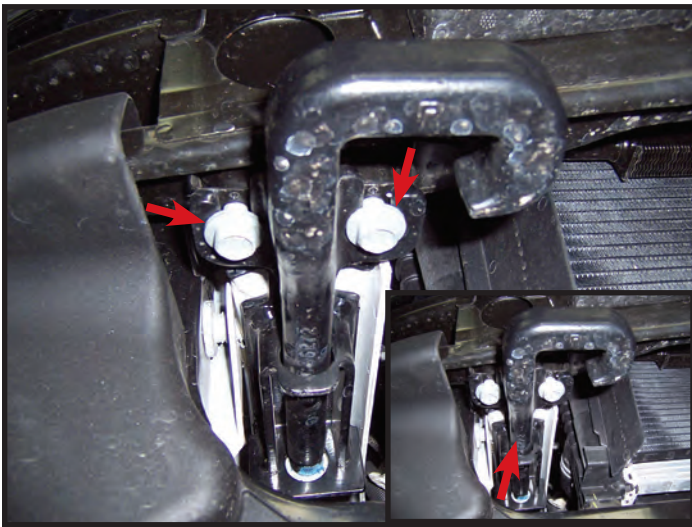


8. On drivers side, remove one bolt from front of wheel well to the side of skid plate to gain access to rear baseplate mounting hole. Repeat for other side if equipped with tow hooks.

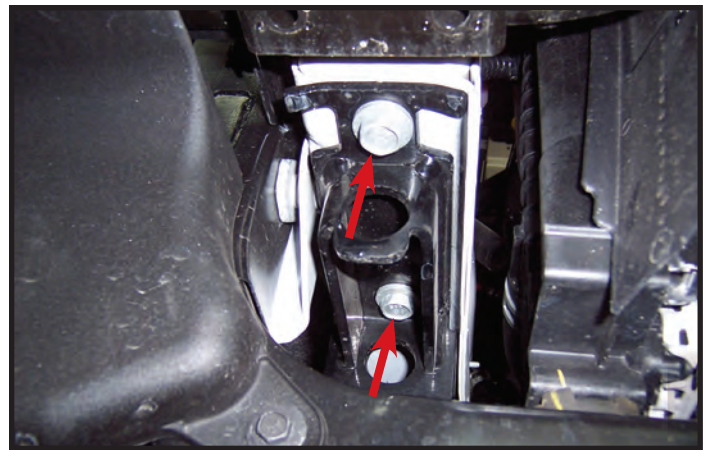
If equipped with tow hooks continue on with step 9, if not equipped with tow hooks skip to step 18.



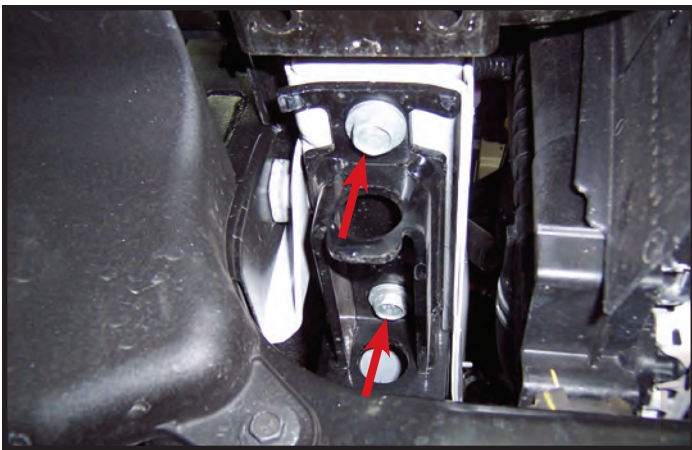
9. Remove rear tow hook nut and two front bolts of tow hook. Repeat for other side. **NOTE:** Removal of skid plate may be helpful.



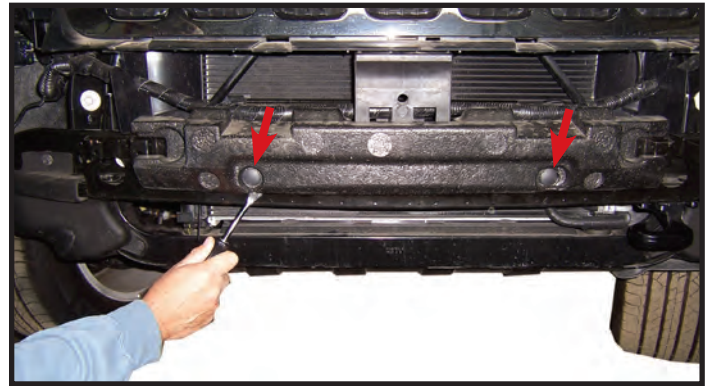
9. Remove rear tow hook nut and two front bolts of tow hook. Repeat for other side. **NOTE:** Removal of skid plate may be helpful.



10. Remove tow hook bracket by removing two bolts. Repeat for other side. **NOTE:** Tow hooks will not be reused.



10. Remove tow hook bracket by removing two bolts. Repeat for other side. **NOTE:** Tow hooks will not be reused.



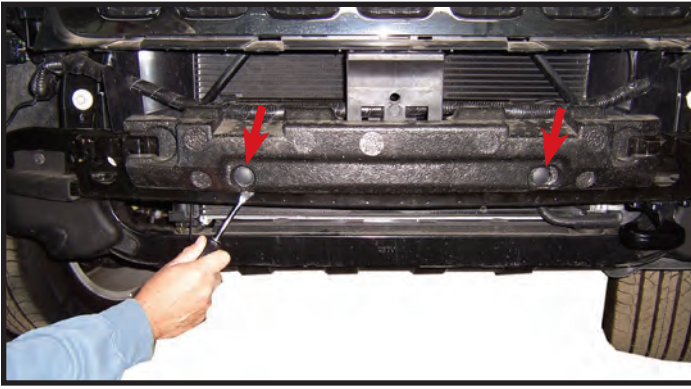
11. Remove foam filler from bumper by removing two plastic push fasteners.



11. Remove three bolts and remove plastic bumper shield. Repeat for other side of bumper.



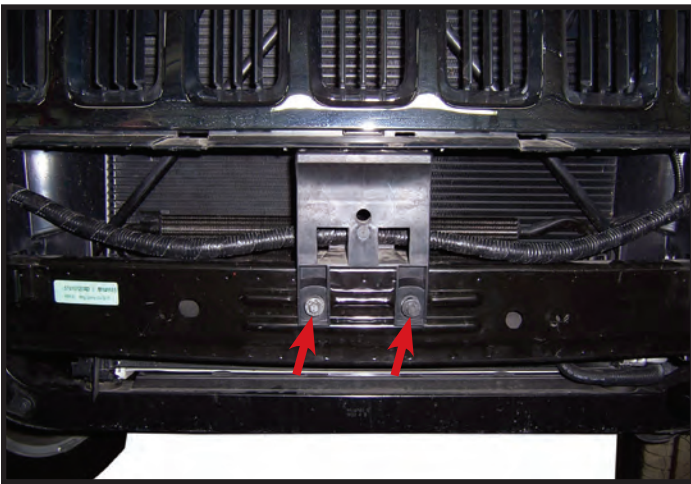
12. Remove grill assembly by pulling up on plastic on each side on top and remove one bolt on each side under headlight and set aside.



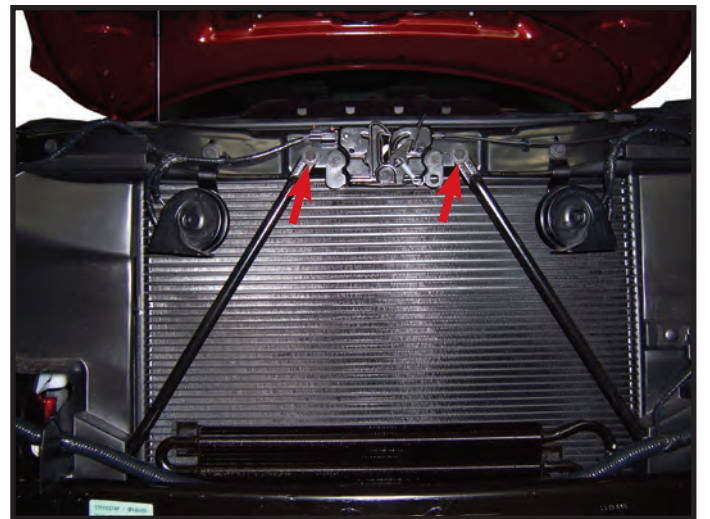
12. Remove foam filler from bumper by removing two plastic push fasteners.



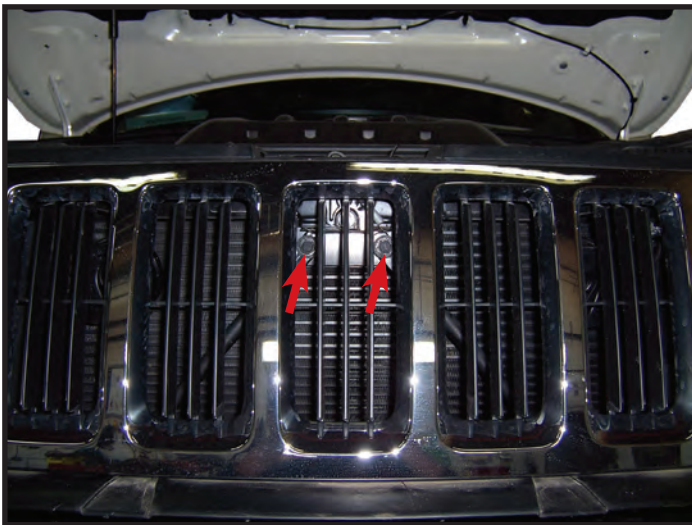
13. Remove two bolts from center grill support and remove support.



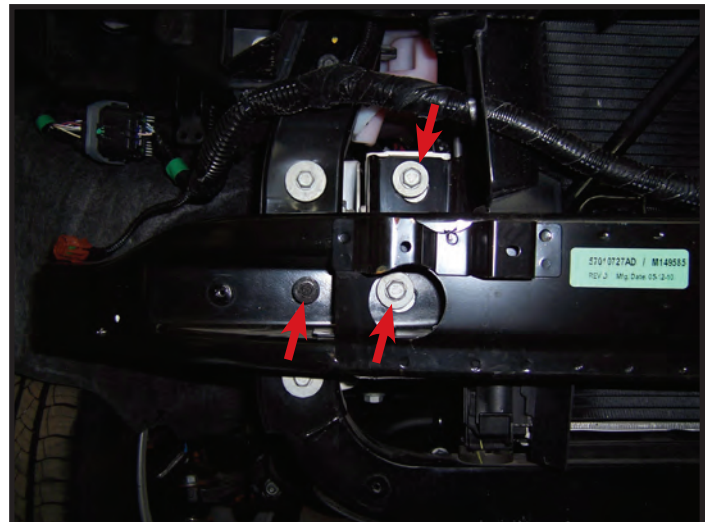
13. Remove two bolts from center grill support and remove support.



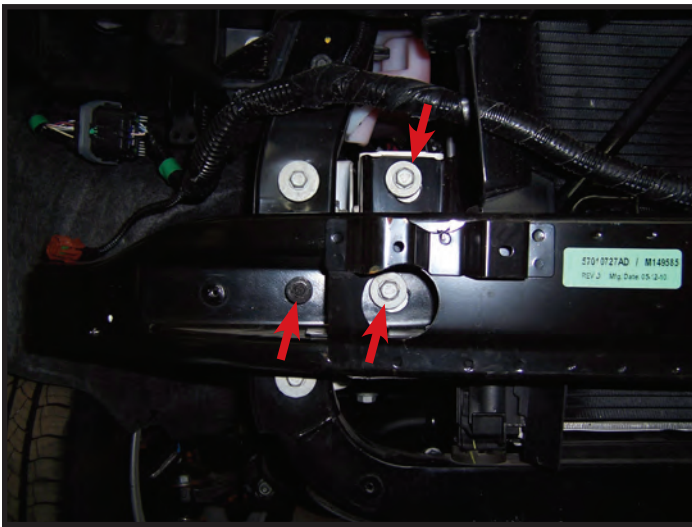
14. Remove two bolts from top bumper supports. **NOTE: Be careful not to damage radiator.**



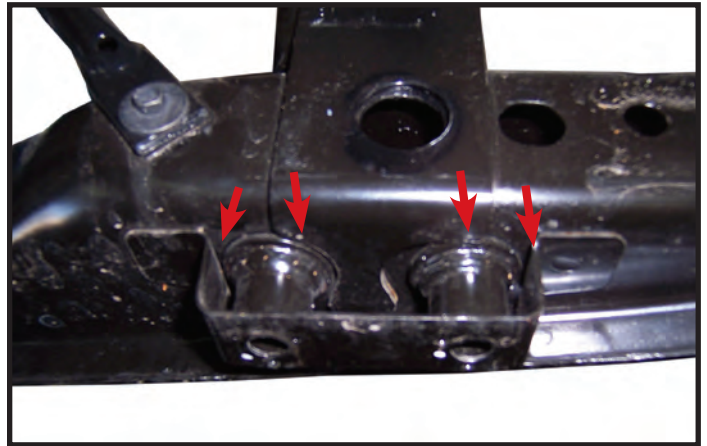
14. Remove two bolts from top bumper supports from behind grill. **NOTE: Be careful not to damage radiator.**



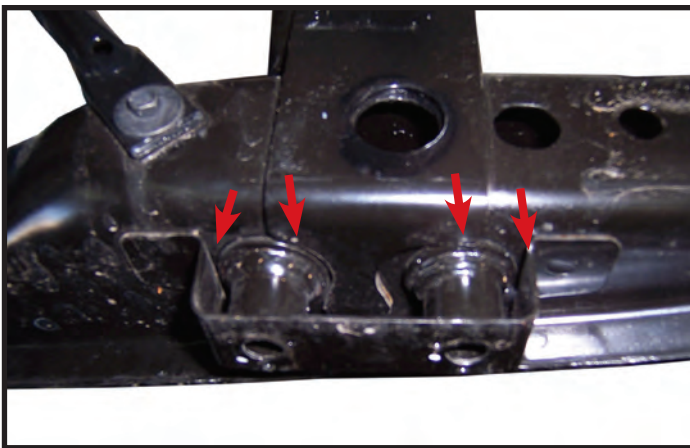
15. Remove three bolts from bumper on each side and remove. **NOTE: Be careful not to damage radiator when removing bumper.**



15. Remove three bolts from bumper on each side and remove. **NOTE: Be careful not to damage radiator when removing bumper.**



16. Remove front tow hook mount flush with the bottom of the bumper. Use torch or grinder to remove. Reinstall bumper and foam. **NOTE: Be careful not to damage radiator when reinstalling bumper.** Reinstall center grill support and grill assembly.



16. Remove front tow hook mount flush with the bottom of the bumper. Use torch or grinder to remove.



17. With an assistant, install baseplate up against bottom of frame. Fasten using four 10mm flat fender washers, 10mm lock washers and 10mm-1.50 x 35mm bolts, thread into existing threaded holes in frame, **NOTE: Use blue LOCTITE® on all bolts and tighten all bolts according to chart on front page.**

17. Reinstall bumper in reverse order. **NOTE: Be careful not to damage radiator when reinstalling bumper.**



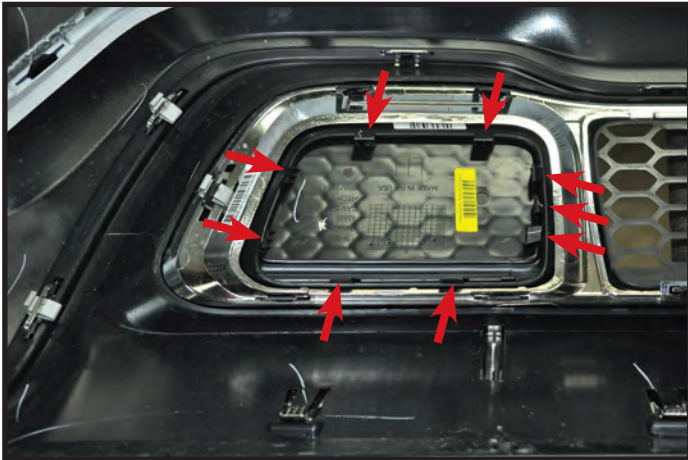
18. **IF EQUIPPED WITH ADAPTIVE CRUISE CONTROL**
Remove two screws from adaptive cruise control sensor and let hang.



18. Reinstall air deflector, fascia and plug in fog lights. Use the plastic rivet instructions to install the supplied rivets to fascia.



19. With an assistant, install baseplate up against bottom of frame. (Make sure sensor wire is in front on cross-member.) Fasten using four 10mm flat fender washers, 10mm lock washers and 10mm-1.50 x 35mm bolts, thread into existing threaded holes in frame, **NOTE:** Use blue **LOCTITE**® on all bolts and tighten all bolts according to chart on front page.



19a.2014 models only: Release tabs on back side of fascia as shown by arrows to remove inserts to allow pullears to pass through fascia if not equipped with tow hooks.



20. Reinstall adaptive cruise control sensor (if equipped), air deflector, fascia and plug in fog lights. Use the plastic rivet instructions to install the supplied rivets to fascia.

PLASTIC RIVET INSTALLATION



1. Insert plastic rivet into existing holes.



2. Use pliers as leverage tool for vise grip.



3. Use vise grip on rivet, and roll on pliers as shown.



P.O. BOX 189
4010 320th St., BOYDEN, IA. 51234
PH: (712) 725-2311
FAX: (712) 725-2380
TOLL FREE: 1-800-54DEMCO (1-800-543-3626)
www.demco-products.com

**Go online to www.demco-products.com for Demco
warranty policies & product registration.**